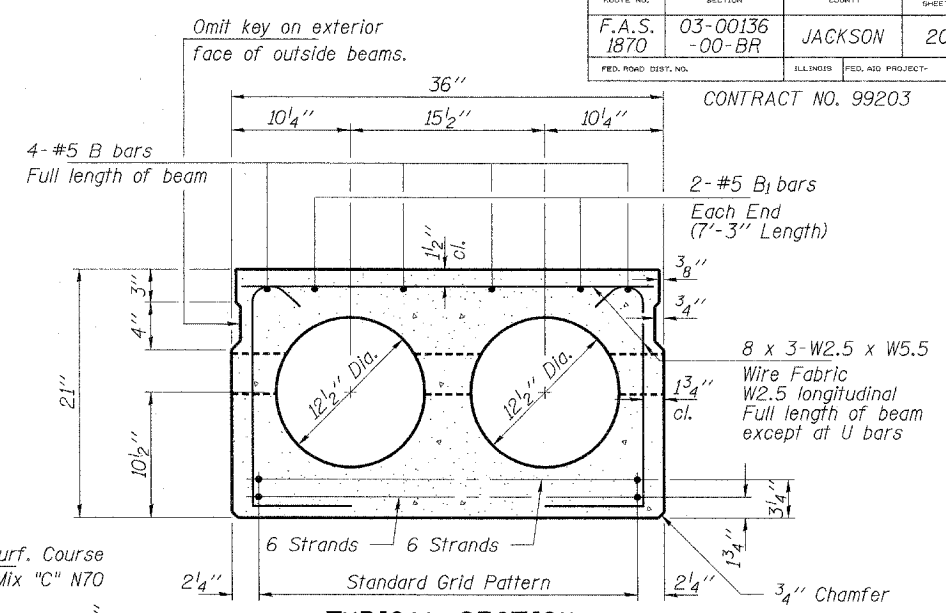


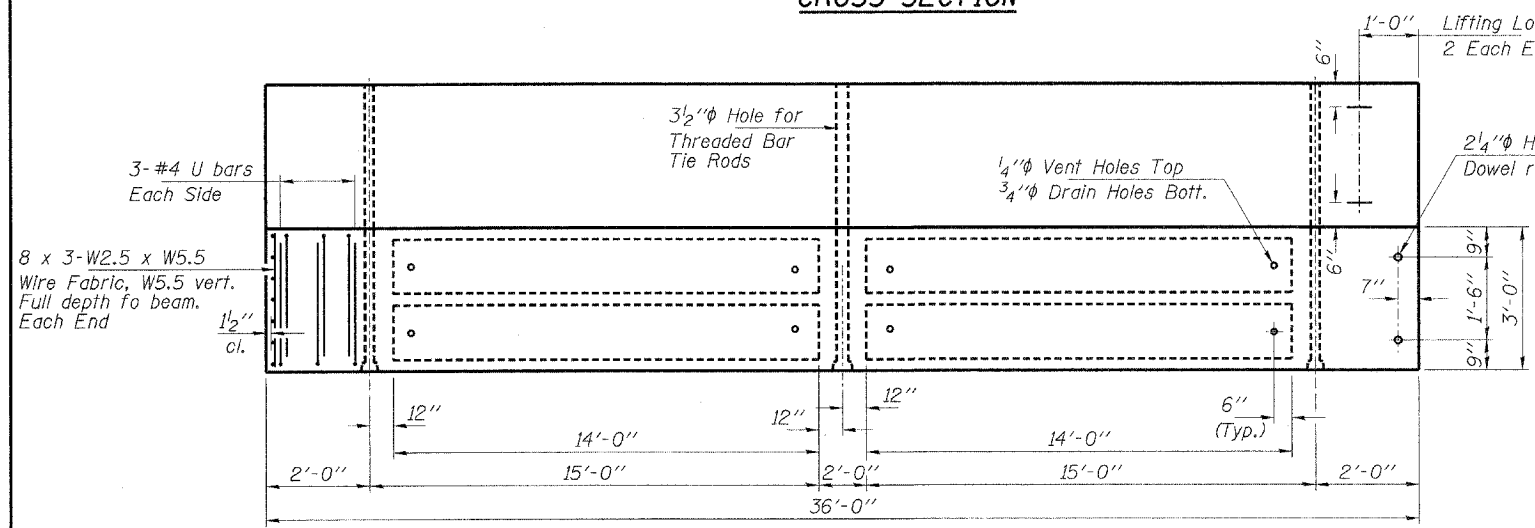
CROSS SECTION

See Sheet 16 for complete rail details.

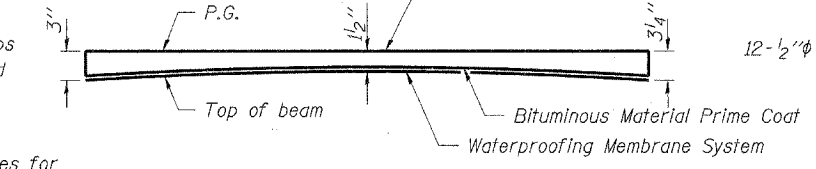


TYPICAL SECTION

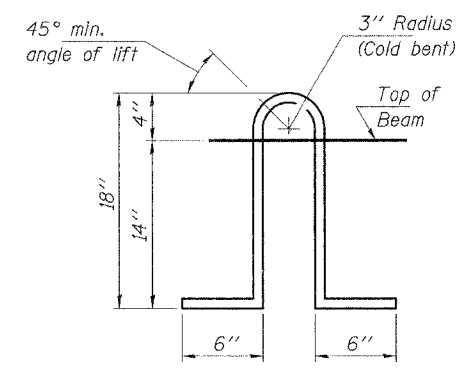
CONTRACT NO. 99203



PLAN

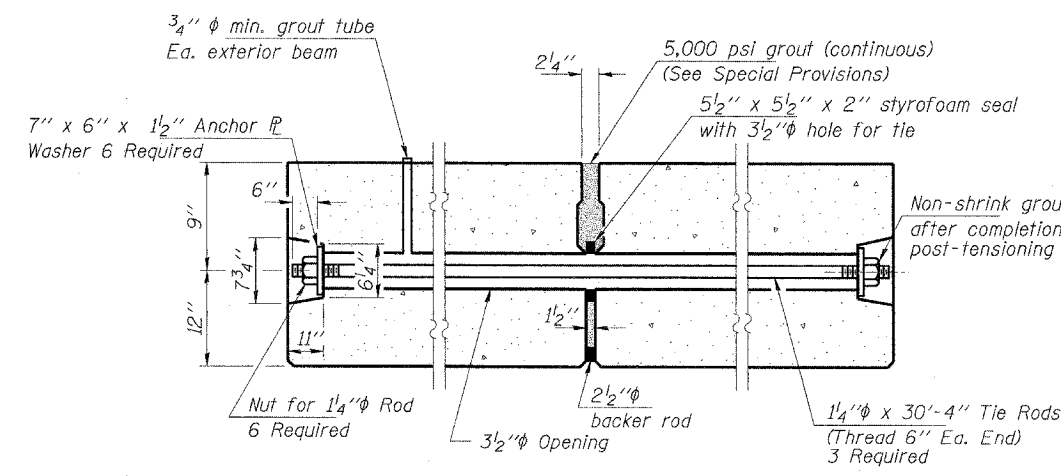


ANTICIPATED CAMBER DIAGRAM

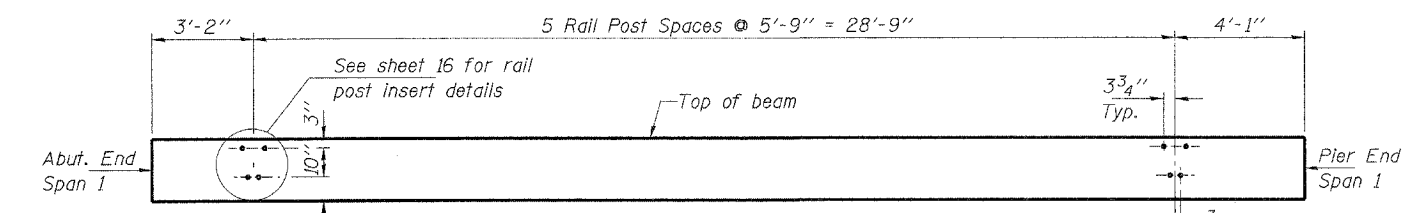


LIFTING LOOP DETAIL

Note: The loop shall be formed in a manner such that all strands are engaged during lifting. Loops shall be burned off after the beams have been erected.



TYPICAL POST-TENSIONED TRANSVERSE TIE ROD DETAIL
1/4" Threaded Bar tensioned to 120 kip max. transfer stress (Lockoff)



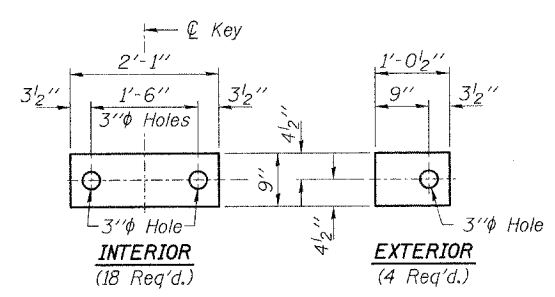
ELEVATION OF OUTSIDE BEAMS
Showing Rail Post Spacing

BILL OF MATERIAL

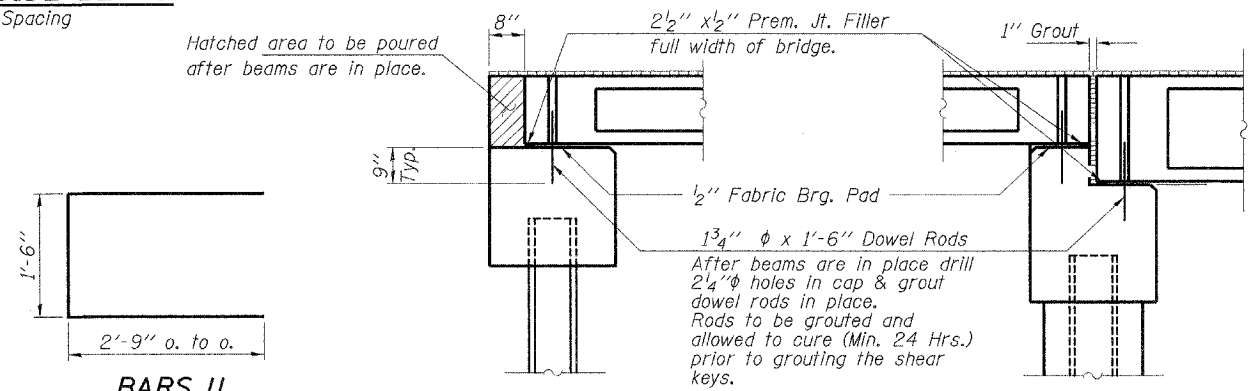
| ITEM | UNIT | QUANTITY |
|---|---------|----------|
| Precast Prestressed Concrete Deck Beams (21" Depth) | Sq. Ft. | 1,080 |
| Waterproofing Membrane System | Sq. Yd. | 127 |
| PC Mortar Fairing Course | Foot | 81 |

Weight of one beam = 19,800 pounds.

Note: See sheet 15 for details and notes. See Roadway Quantity Table (Sheet 2) for bituminous quantity.



FABRIC BEARING PAD DETAILS



SECTION AT WEST ABUT.

SECTION AT PIER

HLR
Rice, Berry and Associates
A Division of Hampton, Lenzini and Renwick, Inc.
Civil & Structural Engineers
801 S. Durkin Drive
Springfield, Illinois 62704
217-546-3400
P.O. Box 1036
DuQuoin, Illinois 62832
618-790-4637
Account Number: 12-47-0016-1
Date: 10-28-04
DESIGNED: S.W.M. CHECKED: T.P.L. DRAWN: D.B.

SUPERSTRUCTURE - SPAN 1
F.A.S. 1870 / C.H. 7
SECTION 03-00136-00-BR
JACKSON COUNTY
STR. NO. 039-3249 / STATION 10+04