

ROUTE	SECTION	COUNTY	TOTAL SHEETS	SHEET NO.
CH 1	02-00092-00-BR	UNION	10	2
PROJECT NO. BROS-181(18)			CONTRACT NO. 99207	

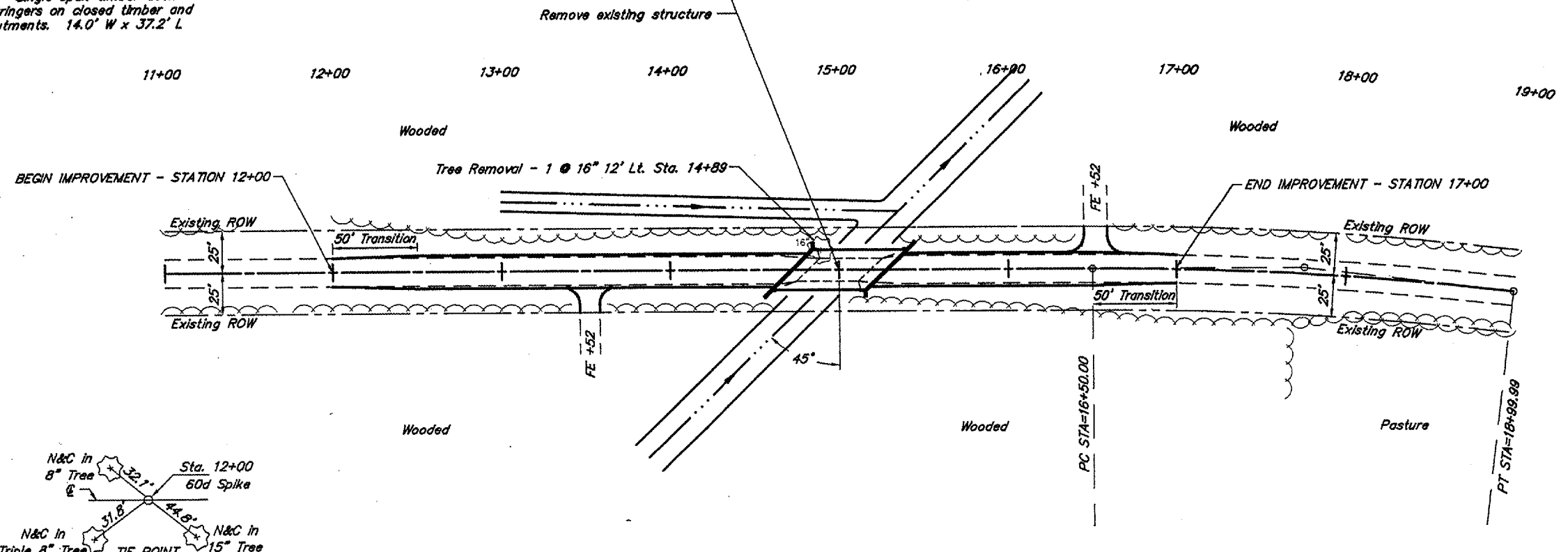
CURVE DATA

PI STA=17+75.14
 $\Delta = 6^{\circ}44'00''$ $T = 125.14'$
 $D = 2^{\circ}41'36''$ $L = 249.99'$
 $R = 2127.25'$ $E = 3.68'$

B.M. - RR Spike in 12" Dbl. Tree
 29' Lt. Sta. 14+64
 Elev. 468.70

Existing Structure - Single span timber deck
 with steel stringers on closed timber and
 concrete abutments. 14.0' W x 37.2' L

Station 15+00 - Single Span Precast
 Prestressed Concrete Deck Beam Bridge
 57.54' Bk-Bk Abutments
 Skewed 45° Lt. Forward.



SCALES:
 1" = 80' HOR
 1" = 10' VER

