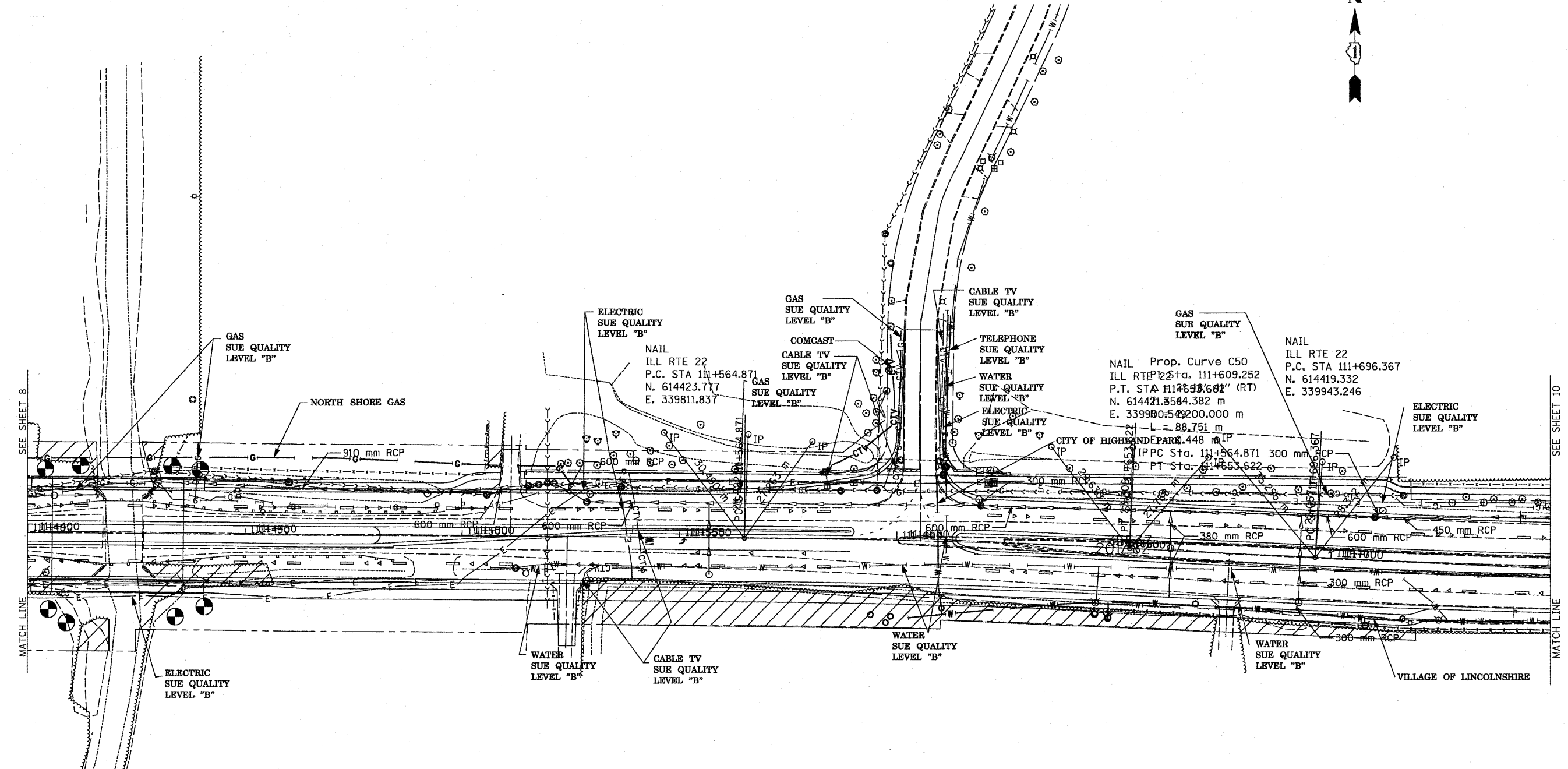
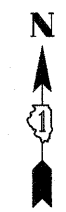


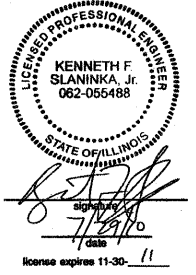
F.A.P. RTE.	SECTION	COUNTY	TOTAL SHEETS	SHEET NO.
337	20R-4	LAKE	232	109H
STA.		TO STA.		
FED. ROAD DIST. NO.		ILLINOIS	FED. AID PROJECT	

CONTRACT NO. 60860



— T — T —	TELEPHONE
— W — W —	WATER
— G — G —	GAS
— CTV — CTV — CTV	CABLE TELEVISION
— FO — FO — FO	FIBER OPTIC
— E — E —	ELECTRIC

FOR SUE INFORMATION ONLY



TBE GROUP, INC.
 CIVIL ENGINEERING * TRANSPORTATION * ENVIRONMENTAL
 * PLANNING * UTILITY ENGINEERING * LOCATING
 SOUTHERN REGION: FL, GA, SC, NC
 NORTHERN REGION: IL, IN, MI, OH, MD, NJ, NY
 PA, VA, CANADA
 WESTERN REGION: AZ, NV, NM, TX, CA, OR, UT, WA
 SUE Quality Level "B" Completed On: 3/20/02
 Prepared By: JAC QA/QC By: RLC Final QA/QC By: KS
 TBE Project No: IL09500117, IL09510404, IL09510418



205 W. WACKER DRIVE
 SUITE 1020
 CHICAGO, IL 60606
 (312) 704-1970

REVISIONS		ILLINOIS DEPARTMENT OF TRANSPORTATION
NAME	DATE	
NEW UTILITIES IN COLOR	7/28/10	IL RTE. 22 FROM EAST OF I-94 TO WEST OF US-41
		SCALE 1:500 (METRIC UNIT)
		DATE
		DRAWN BY
		CHECKED BY