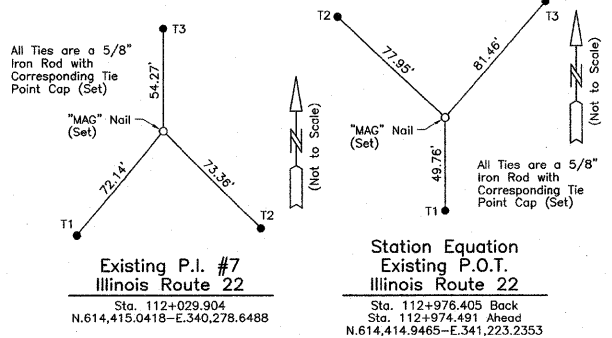


PART OF THE SW 1/4 OF SEC. 16, TWP. 43 N., R. 12 E. OF THE 3RD. P.M., IN LAKE COUNTY, ILLINOIS.



Parcel	Document No.	Date Recorded
1EH0104	282477	July 13, 1926
1EH0104	92 ED 11	*September 8, 1992
----	282477	July 13, 1926
----	494624	May 7, 1941
----	497881	July 8, 1941
----	1639664	October 19, 1973
----	2158605	May 4, 1982
----	92 ED 36	*August 5, 1992
----	92 ED 4	*March 1, 1993
----	92 ED 5	*June 16, 1992
----	4438506	October 22, 1999

Point Number	Tie to point	Tie Distance (feet)
1	T1	23.10
	T2	9.62
	T3	6.70
2	T1	2.83
	T2	9.93
	T3	18.56

LEGEND

Bearings are referenced to the Illinois State Plane Coordinate System, NAD 83, East Zone, as Provided by the Illinois Department of Transportation.

STATE OF ILLINOIS }
COUNTY OF LAKE }

THIS IS TO CERTIFY THAT WE, JORGENSEN & ASSOCIATES, INC., AN ILLINOIS PROFESSIONAL DESIGN FIRM LAND SURVEYING CORPORATION, NUMBER 184-2771, HAVE SURVEYED THE PLAT OF HIGHWAYS SHOWN HEREON IN SECTION 16, TOWNSHIP 43N., RANGE 12E., OF THE THIRD PRINCIPAL MERIDIAN, LAKE COUNTY, THAT THE SURVEY IS TRUE AND COMPLETE AS SHOWN TO THE BEST OF MY KNOWLEDGE AND BELIEF, THAT THE PLAT CORRECTLY REPRESENTS SAID SURVEY, THAT ALL MONUMENTS FOUND AND ESTABLISHED ARE OF PERMANENT QUALITY AND OCCUPY THE POSITIONS SHOWN THEREON AND THAT THE MONUMENTS ARE SUFFICIENT TO ENABLE THE SURVEY TO BE RETRACED. MADE FOR THE DEPARTMENT OF TRANSPORTATION, STATE OF ILLINOIS. DATED AT LAKE VILLA, ILLINOIS THIS 25th DAY OF February 2009 A.D.

Christian H. Jorgensen PRESIDENT
ILLINOIS PROFESSIONAL LAND SURVEYOR NO. 35-2797
EXPIRATION DATE: NOVEMBER 30, 2004

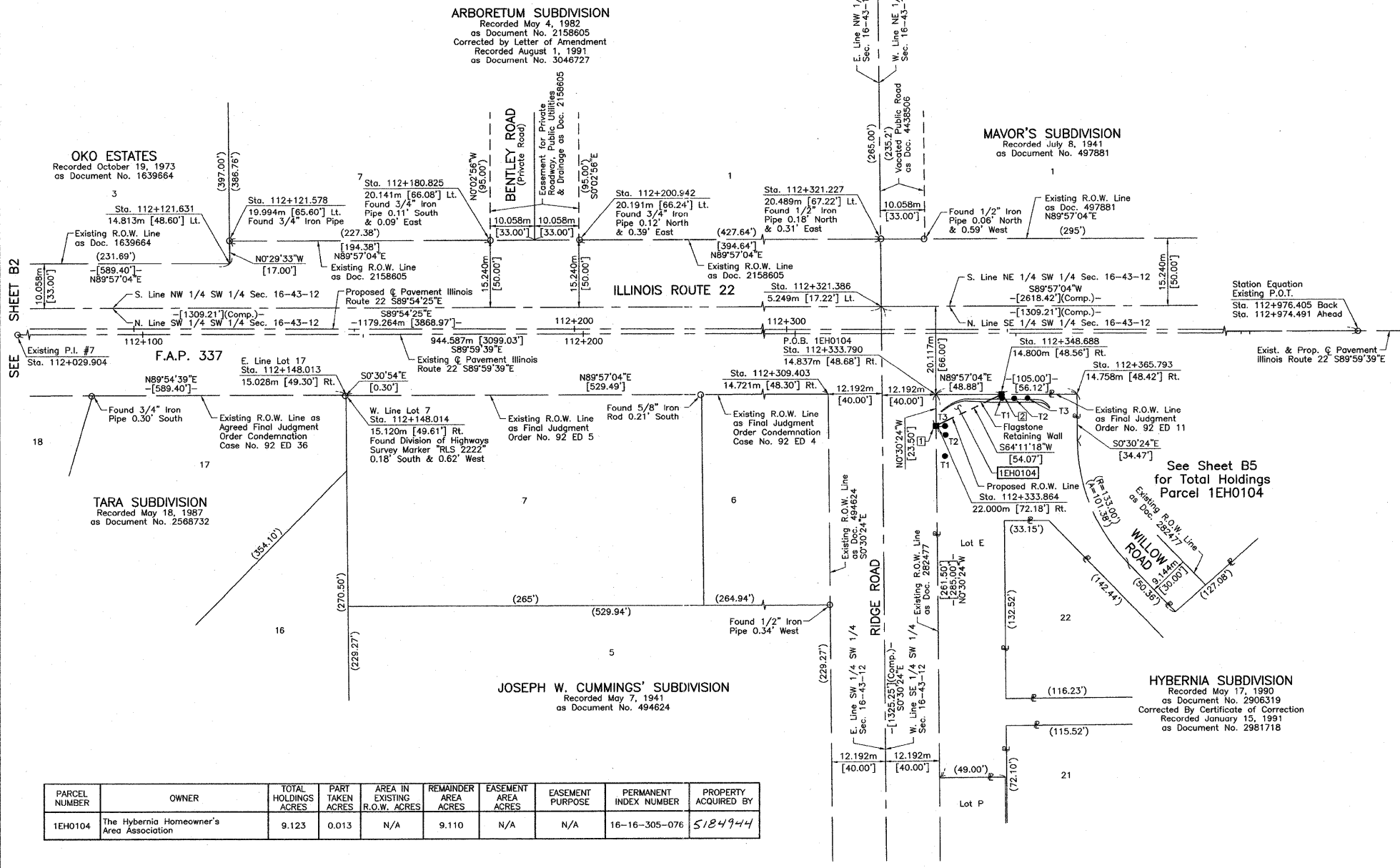
NOTE: SURFACE COORDINATES ARE SHOWN.
PROJECT AVERAGE COMBINED SCALE FACTOR 0.999962771.

STATION	OFFSET	NORTH	EAST
112+121.578	19.994m Lt.	614,436.3291	340,368.4417
112+121.631	14.813m Lt.	614,431.1475	340,368.4863
112+148.013	15.028m Rt.	614,401.2636	340,394.8200
112+148.014	15.120m Rt.	614,401.1714	340,394.8208
112+180.825	20.141m Lt.	614,436.3795	340,427.6888
112+200.942	20.191m Lt.	614,436.3966	340,447.8057
112+309.403	14.721m Rt.	614,401.3088	340,556.2101
112+321.227	20.489m Lt.	614,436.4991	340,568.0914
112+321.386	5.249m Lt.	614,421.2591	340,568.2262
112+333.790	14.837m Rt.	614,401.1528	340,580.5965
112+333.864	22.000m Rt.	614,393.9900	340,580.6598
112+348.688	14.800m Rt.	614,401.1655	340,595.4954
112+365.793	14.758m Rt.	614,401.1801	340,612.6005

JORGENSEN & ASSOCIATES, INC.
120 PARK AVENUE
LAKE VILLA, ILLINOIS 60046 (847) 356-3371 SHEET 1 IS A COVER SHEET AND IS NOT RECORDED.

BY	DATE	REVISION

PARCEL NUMBER	OWNER	TOTAL HOLDINGS ACRES	PART TAKEN ACRES	AREA IN EXISTING R.O.W. ACRES	REMAINDER AREA ACRES	EASEMENT AREA ACRES	EASEMENT PURPOSE	PERMANENT INDEX NUMBER	PROPERTY ACQUIRED BY
1EH0104	The Hybernia Homeowner's Ared Association	9.123	0.013	N/A	9.110	N/A	N/A	16-16-305-076	5184944



COORDINATE TABLE

STATION	OFFSET	NORTH	EAST
112+121.578	19.994m Lt.	614,436.3291	340,368.4417
112+121.631	14.813m Lt.	614,431.1475	340,368.4863
112+148.013	15.028m Rt.	614,401.2636	340,394.8200
112+148.014	15.120m Rt.	614,401.1714	340,394.8208
112+180.825	20.141m Lt.	614,436.3795	340,427.6888
112+200.942	20.191m Lt.	614,436.3966	340,447.8057
112+309.403	14.721m Rt.	614,401.3088	340,556.2101
112+321.227	20.489m Lt.	614,436.4991	340,568.0914
112+321.386	5.249m Lt.	614,421.2591	340,568.2262
112+333.790	14.837m Rt.	614,401.1528	340,580.5965
112+333.864	22.000m Rt.	614,393.9900	340,580.6598
112+348.688	14.800m Rt.	614,401.1655	340,595.4954
112+365.793	14.758m Rt.	614,401.1801	340,612.6005

PLAT OF HIGHWAYS
STATE OF ILLINOIS
DEPARTMENT OF TRANSPORTATION
F.A.P. 337 (ILLINOIS ROUTE 22)

SECTION 20R-4 LAKE COUNTY
PROJECT JOB NO. R-91-023-01
STATION 112+100 TO STATION 113+000
SCALE: 1:500/1"=12.7 SHEET B3 OF B5

BUREAU OF LAND ACQUISITION
201 WEST CENTER COURT
SCHAUMBURG, ILLINOIS 60196

ROUTE F.A.P. 337 (ILLINOIS ROUTE 22) SECTION 20R-4 COUNTY LAKE JOB NO. R-91-023-01 RECORDING: RECORDED ON AS DOCUMENT NO.