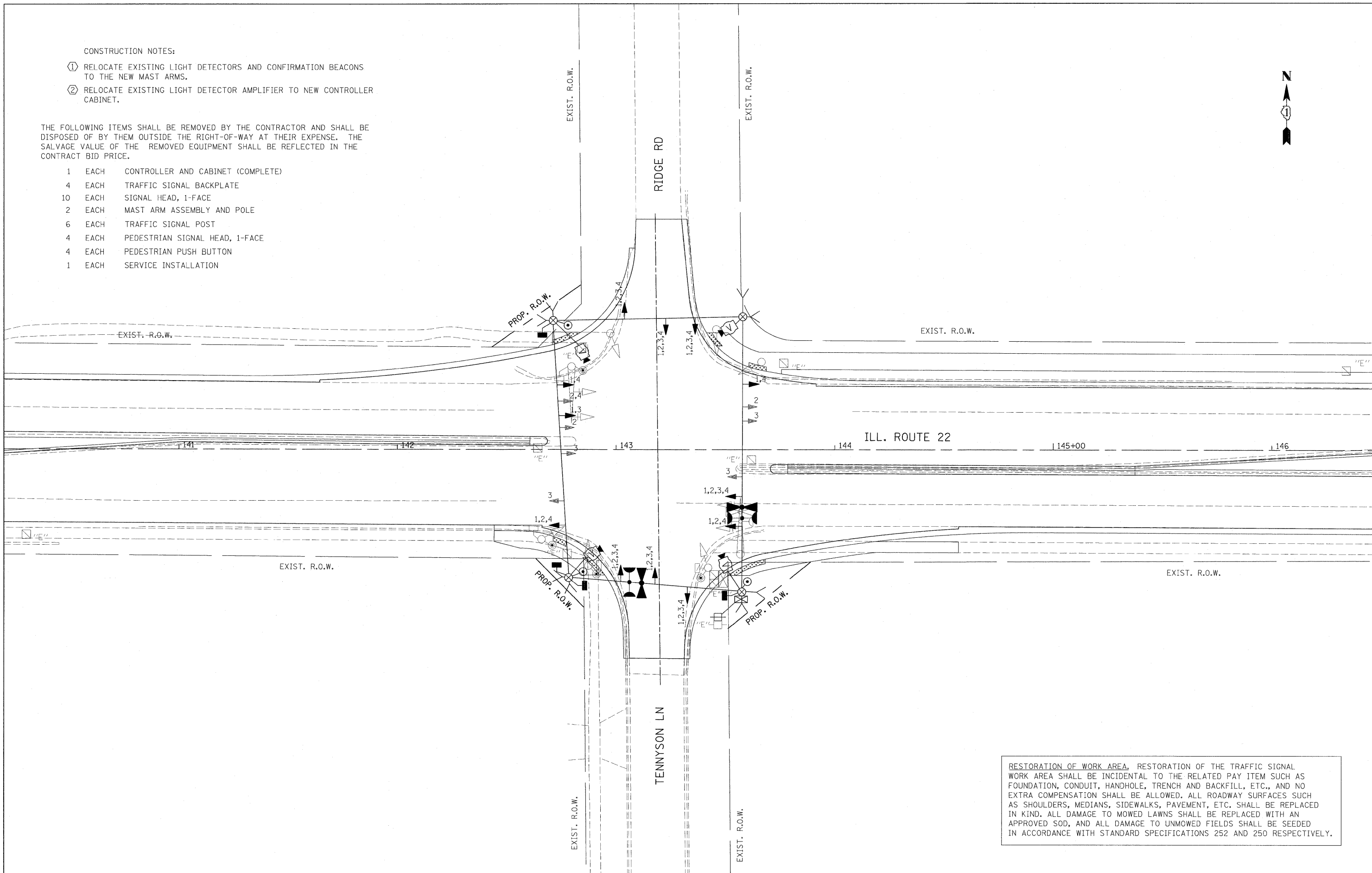


CONSTRUCTION NOTES:

- ① RELOCATE EXISTING LIGHT DETECTORS AND CONFIRMATION BEACONS TO THE NEW MAST ARMS.
- ② RELOCATE EXISTING LIGHT DETECTOR AMPLIFIER TO NEW CONTROLLER CABINET.

THE FOLLOWING ITEMS SHALL BE REMOVED BY THE CONTRACTOR AND SHALL BE DISPOSED OF BY THEM OUTSIDE THE RIGHT-OF-WAY AT THEIR EXPENSE. THE SALVAGE VALUE OF THE REMOVED EQUIPMENT SHALL BE REFLECTED IN THE CONTRACT BID PRICE.

- 1 EACH CONTROLLER AND CABINET (COMPLETE)
- 4 EACH TRAFFIC SIGNAL BACKPLATE
- 10 EACH SIGNAL HEAD, 1-FACE
- 2 EACH MAST ARM ASSEMBLY AND POLE
- 6 EACH TRAFFIC SIGNAL POST
- 4 EACH PEDESTRIAN SIGNAL HEAD, 1-FACE
- 4 EACH PEDESTRIAN PUSH BUTTON
- 1 EACH SERVICE INSTALLATION



RESTORATION OF WORK AREA, RESTORATION OF THE TRAFFIC SIGNAL WORK AREA SHALL BE INCIDENTAL TO THE RELATED PAY ITEM SUCH AS FOUNDATION, CONDUIT, HANDHOLE, TRENCH AND BACKFILL, ETC., AND NO EXTRA COMPENSATION SHALL BE ALLOWED. ALL ROADWAY SURFACES SUCH AS SHOULDERS, MEDIANS, SIDEWALKS, PAVEMENT, ETC. SHALL BE REPLACED IN KIND. ALL DAMAGE TO MOWED LAWNS SHALL BE REPLACED WITH AN APPROVED SOD, AND ALL DAMAGE TO UNMOWED FIELDS SHALL BE SEEDING IN ACCORDANCE WITH STANDARD SPECIFICATIONS 252 AND 250 RESPECTIVELY.

FILE NAME =	USER NAME = #USER#	DESIGNED - LP	REVISED -	<b>STATE OF ILLINOIS DEPARTMENT OF TRANSPORTATION</b>	<b>TEMPORARY TRAFFIC SIGNAL INSTALLATION PLAN IL. ROUTE 22 AND TENNYSON LANE / RIDGE ROAD</b>	F.A.P. RTE.	SECTION	COUNTY	TOTAL SHEETS	SHEET NO.
W:\ILRTE22\ 2009 REVISIONS\CADD Sheets\	D160860-ah-t-ts-TENTMPLN.dgn	DRAWN - LP	REVISED -			337	20R-4	LAKE	232	154
PLOT SCALE = #SCALE#	CHECKED - JP	REVISED -				CONTRACT NO. 60860				
PLOT DATE = 5/15/2010	DATE - 05/14/2010	REVISED -				ILLINOIS FED. AID PROJECT				
				SCALE: 1"=20'	SHEET NO. 154 OF 232 SHEETS	STA.	TO STA.			