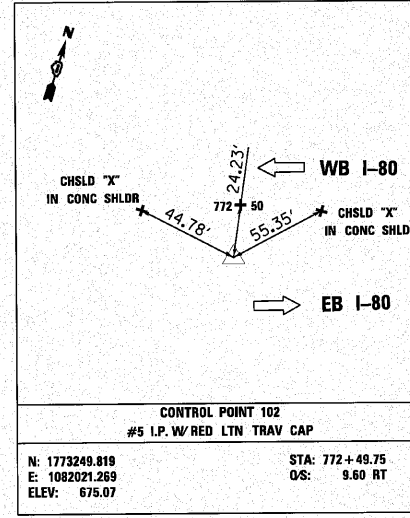
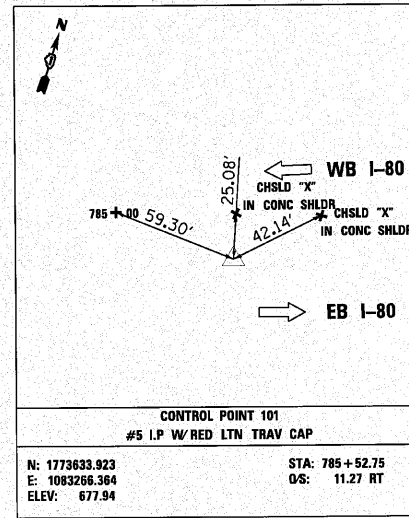
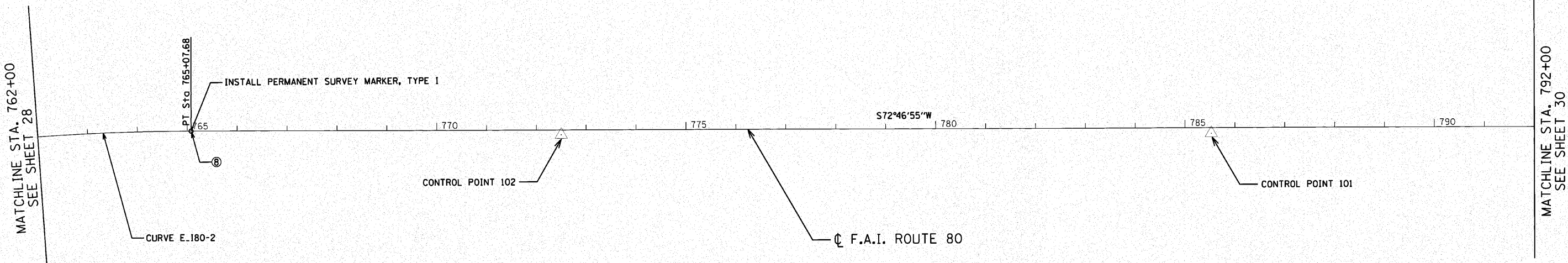


**CURVE DATA F.A.I. ROUTE 80**

CURVE E.180-2  
 PI STA. = 743+64.24  
 Δ = 60° 40' 37" (RT)  
 D = 1° 15' 59"  
 R = 4,524.31'  
 T = 2,647.87'  
 L = 4,791.31'  
 E = 717.89'  
 P.C. STA = 717+16.37  
 P.T. STA = 765+07.68

**PROJECT COORDINATES**

NUMBER	LOCATION	DESCRIPTION	STATION	NORTHING	EASTING
8	FAI - 80	P.T. STATION	765+07.68	1773039.325	1081309.608



BM#	DESCRIPTION	ELEVATION
BM5	CHISELED SQUARE IN NORTHERLY CONC. SIGN POST FOUNDATION. SIGN READS EXIT 140 355 NORTH TOLLWAY 1/2 MILE. STAMPED STATION 769+00.	673.21
BM8	CHISELED SQUARE IN SOUTHERLY EDGE OF CONC. SHOULDER AT STAMPED STATION 780+00.	676.94
BM9	CHISELED SQUARE IN CONC. LIGHT POLE FOUNDATION AT STAMPED STATION 791+00.	679.33

c:\pco\3384\2\_ces\1\design\misc\sheet\3384k-A\Align\Tie.dgn

<p><b>Clorba Group, Inc.</b>                  CONSULTING ENGINEERS                  6307 North Campbell Avenue, Suite 403                  Chicago, Illinois 60658                  Tel: 773.774.8200 Fax: 773.774.4014                  Email: chris@clorba.com</p>	USER NAME = jk.jellman	DESIGNED - CRC	REVISED -
	PLOT SCALE = 100.0000' / IN.	DRAWN - JMK	REVISED -
	PLOT DATE = 10/26/2010	CHECKED - MRJ	REVISED -
		DATE = 10/21/2010	REVISED -

**STATE OF ILLINOIS  
 DEPARTMENT OF TRANSPORTATION**

**F.A.I. 80 FROM US 30 TO NS RAILROAD  
 ALIGNMENTS, TIES, AND BENCHMARKS**

SCALE: SHEET NO. OF SHEETS STA. TO STA.

F.A.I. RTE.	SECTION	COUNTY	TOTAL SHEETS	SHEET NO.
80	99-5-Y	WILL	277	29
CONTRACT NO. 60147				
ILLINOIS FED. AID PROJECT				