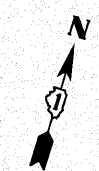


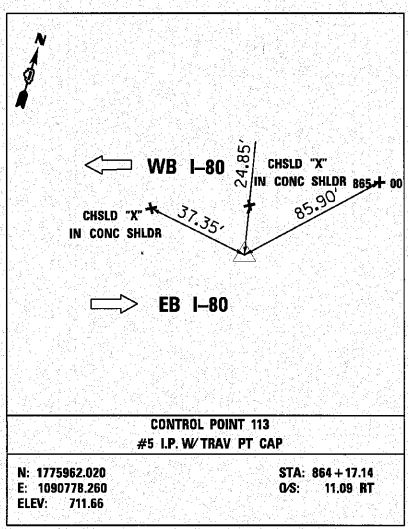
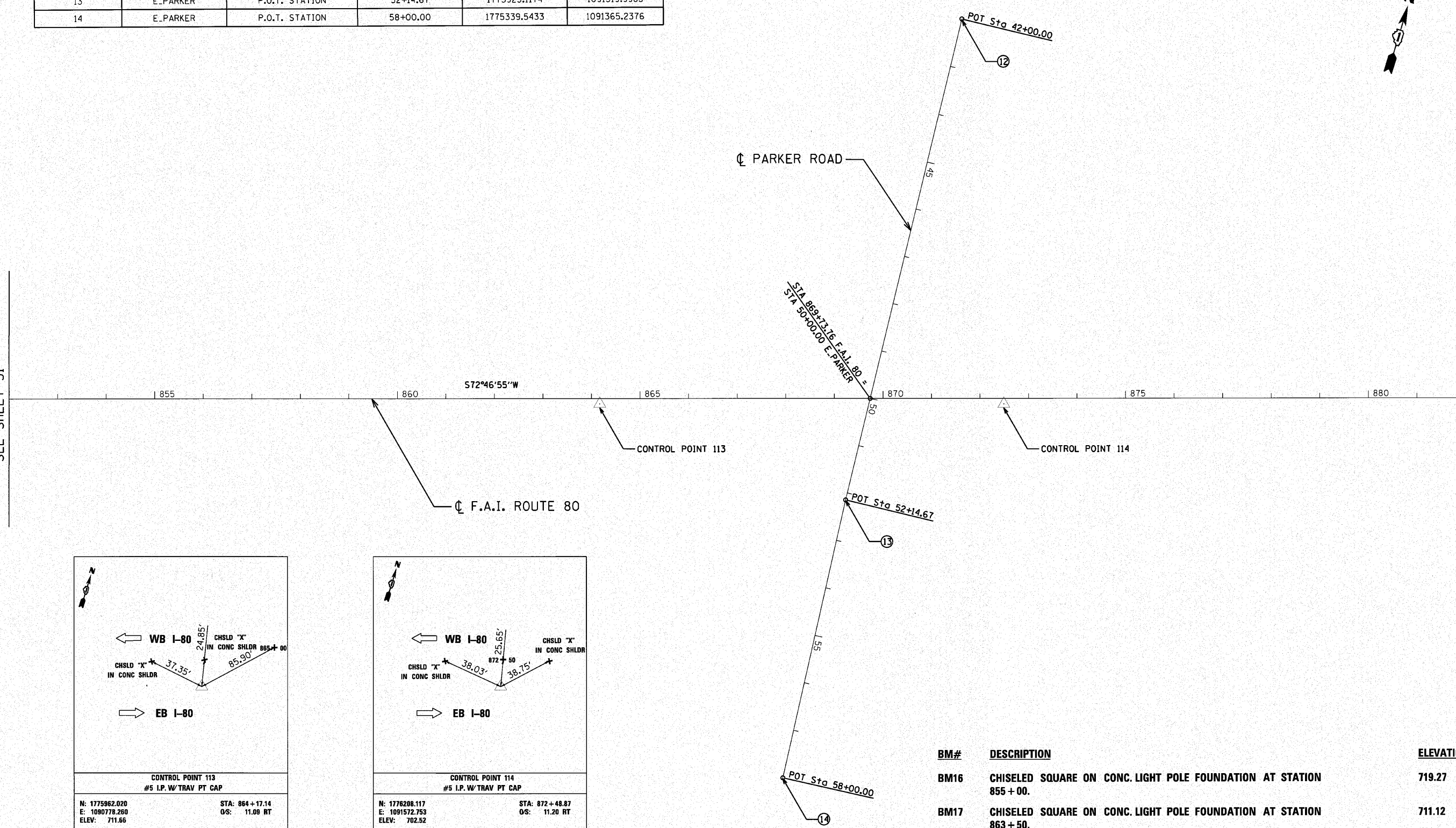
PROJECT COORDINATES

NUMBER	LOCATION	DESCRIPTION	STATION	NORTHING	EASTING
12	E.PARKER	P.O.T. STATION	42+00.00	1776935.8266	1091256.9234
13	E.PARKER	P.O.T. STATION	52+14.67	1775923.1174	1091319.9985
14	E.PARKER	P.O.T. STATION	58+00.00	1775339.5433	1091365.2376

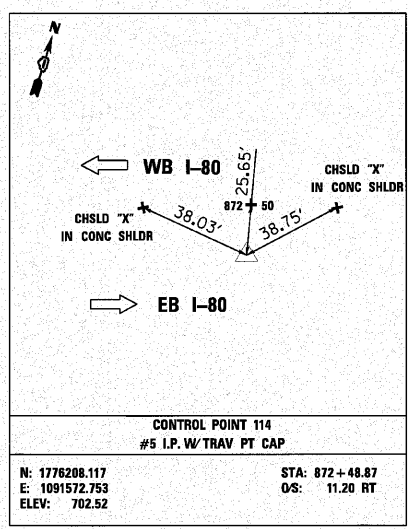


MATCHLINE STA. 852+00  
SEE SHEET 31

MATCHLINE STA. 882+00  
SEE SHEET 33



CONTROL POINT 113 #5 I.P. W/ TRAV PT CAP	
N: 1775962.020	STA: 864 + 17.14
E: 1090778.260	OS: 11.09 RT
ELEV: 711.66	



CONTROL POINT 114 #5 I.P. W/ TRAV PT CAP	
N: 1776208.117	STA: 872 + 48.87
E: 1091572.753	OS: 11.20 RT
ELEV: 702.52	

BM#	DESCRIPTION	ELEVATION
BM16	CHISELED SQUARE ON CONC. LIGHT POLE FOUNDATION AT STATION 855 + 00.	719.27
BM17	CHISELED SQUARE ON CONC. LIGHT POLE FOUNDATION AT STATION 863 + 50.	711.12
BM18	CHISELED IN SOUTH EDGE OF CONC. SHOULDER AT STAMPED STATION 875 + 00.	699.89

c:\p\132814\2-west\design\m\cshane\32814-A\fig11.dwg

<p><b>ENGINEERING CONSULTANT</b> Clorba Group, Inc. CONSULTING ENGINEERS 8507 North Cumberland Avenue, Suite 402 Chicago, Illinois 60638 Tel: 773.775.4000 Fax: 773.775.4014 Email: clorba@clorba.com</p>	USER NAME = jkallman	DESIGNED - CRC	REVISED -	<b>STATE OF ILLINOIS</b> <b>DEPARTMENT OF TRANSPORTATION</b>	<b>F.A.I. 80 FROM US 30 TO NS RAILROAD</b> <b>ALIGNMENTS, TIES, AND BENCHMARKS</b>	F.A.I. RTE.	SECTION	COUNTY	TOTAL SHEETS	SHEET NO.
	PLOT SCALE = 100.0000' / IN.	CHECKED - MRJ	REVISED -			BO	99-5-Y	WILL	277	32
PLOT DATE = 10/28/2010	DATE = 10/27/2010	REVISED -		SCALE:	SHEET NO. OF SHEETS STA. TO STA.	CONTRACT NO. 60147 ILLINOIS FED. AID PROJECT				