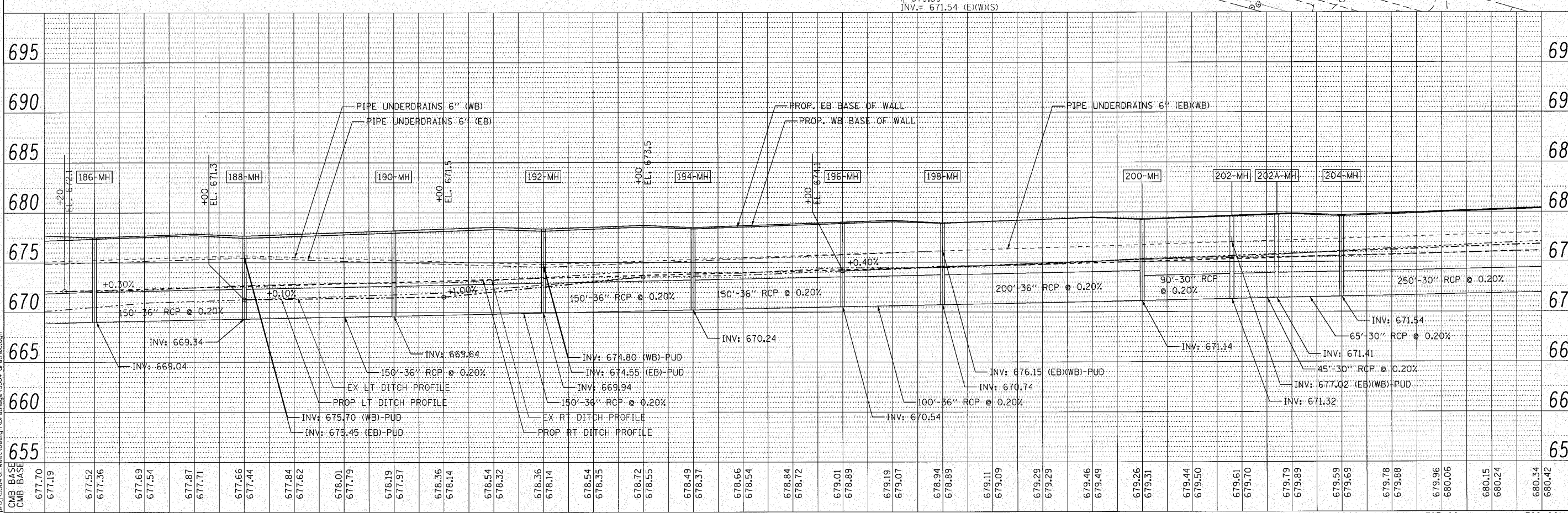
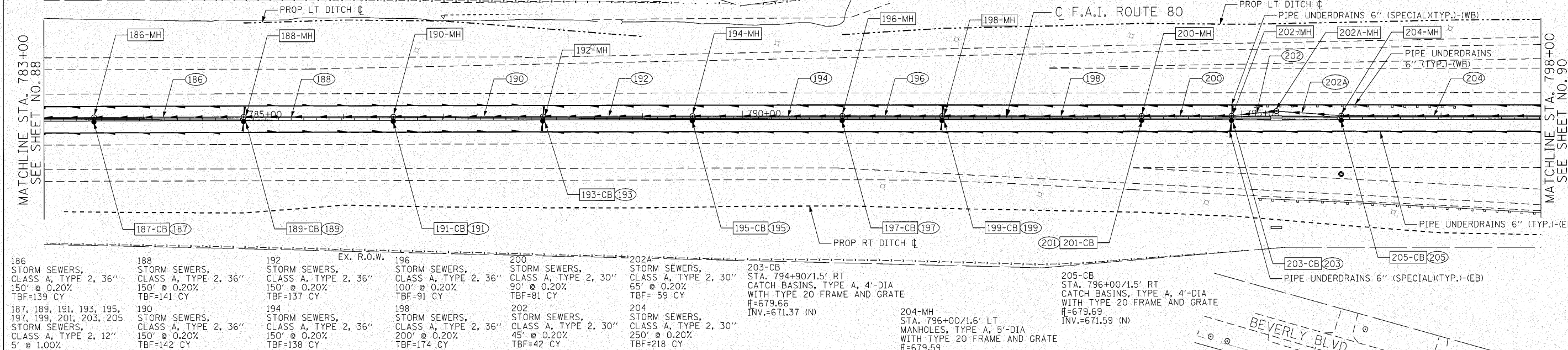


186-MH STA. 783+50/1.5' LT MANHOLES, TYPE A, 5'-DIA WITH TYPE 20 FRAME AND GRATE H=677.52 INV.= 669.04 (E)(S)(W)	188-MH STA. 785+00/1.5' LT MANHOLES, TYPE A, 5'-DIA WITH TYPE 20 FRAME AND GRATE H=677.67 INV.= 669.34 (E)(W)(S)	190-MH STA. 786+50/1.5' LT MANHOLES, TYPE A, 5'-DIA WITH TYPE 20 FRAME AND GRATE H=678.19 INV.= 669.64 (E)(W)(S)	192-MH STA. 788+00/1.5' LT MANHOLES, TYPE A, 5'-DIA WITH TYPE 20 FRAME AND GRATE H=678.36 INV.= 669.94 (E)(W)(S)	194-MH STA. 789+50/1.6' LT MANHOLES, TYPE A, 5'-DIA WITH TYPE 20 FRAME AND GRATE H=678.49 INV.= 670.24 (E)(W)(S)	196-MH STA. 791+00/1.5' LT MANHOLES, TYPE A, 5'-DIA WITH TYPE 20 FRAME AND GRATE H=679.02 INV.= 670.54 (E)(W)(S)	198-MH STA. 792+00/1.6' LT MANHOLES, TYPE A, 5'-DIA WITH TYPE 20 FRAME AND GRATE H=678.94 INV.= 670.74 (E)(W)(S)	200-MH STA. 794+00/1.6' LT MANHOLES, TYPE A, 5'-DIA WITH TYPE 20 FRAME AND GRATE H=679.26 INV.= 671.14 (E)(W)(S)	202-MH STA. 794+90/1.5' LT MANHOLES, TYPE A, 5'-DIA WITH TYPE 20 FRAME AND GRATE H=679.58 INV.= 671.32 (E)(W)(S)
187-CB STA. 783+50/1.6' RT CATCH BASINS, TYPE A, 4'-DIA WITH TYPE 20 FRAME AND GRATE H=677.36 INV.=669.09 (N)	189-CB STA. 785+00/1.6' RT CATCH BASINS, TYPE A, 4'-DIA WITH TYPE 20 FRAME AND GRATE H=677.45 INV.=669.39 (N)	191-CB STA. 786+50/1.6' RT CATCH BASINS, TYPE A, 4'-DIA WITH TYPE 20 FRAME AND GRATE H=677.97 INV.=669.69 (N)	193-CB STA. 788+00/1.6' RT CATCH BASINS, TYPE A, 4'-DIA WITH TYPE 20 FRAME AND GRATE H=678.14 INV.=669.99 (N)	195-CB STA. 789+50/1.6' RT CATCH BASINS, TYPE A, 4'-DIA WITH TYPE 20 FRAME AND GRATE H=678.37 INV.=670.29 (N)	197-CB STA. 791+00/1.6' RT CATCH BASINS, TYPE A, 4'-DIA WITH TYPE 20 FRAME AND GRATE H=678.90 INV.=670.59 (N)	199-CB STA. 792+00/1.6' RT CATCH BASINS, TYPE A, 4'-DIA WITH TYPE 20 FRAME AND GRATE H=678.90 INV.=670.79 (N)	201-CB STA. 794+00/1.5' RT CATCH BASINS, TYPE A, 4'-DIA WITH TYPE 20 FRAME AND GRATE H=679.31 INV.=671.19 (N)	202A-MH STA. 795+35/7.0' LT MANHOLES, TYPE A, 5'-DIA WITH TYPE 1 FRAME, CLOSED LID T/F=679.85 INV.= 671.41 (E)(W)



ENGINEERING CONSULTANT	USER NAME = coorwell	DESIGNED - CRC	REVISED -	STATE OF ILLINOIS DEPARTMENT OF TRANSPORTATION F.A.I. 80 FROM US 30 TO NS RAILROAD PROPOSED DRAINAGE PLAN AND PROFILE	F.A.I. RTE. 80	SECTION 99-5-Y	COUNTY WILL	TOTAL SHEETS 276	SHEET NO. 89	
CONTRACT NO. 60147	PLLOT SCALE = 50.0000' / IN.	CHECKED - MRJ	REVISED -		SCALE: 1" = 50'	SHEET NO. 89 OF	SHEETS	STA. 783+00	TO STA. 798+00	ILLINOIS FED. AID PROJECT
PLLOT DATE = 10/27/2010	DATE = 10/27/2010	REVISIED -								



DATE	
BY	
REVISION	
NO.	
DATE	
BY	
REVISION	
NO.	

DATE	
BY	
REVISION	
NO.	
DATE	
BY	
REVISION	
NO.	

N:\proj\338A\338A_V2_West\Design\Drawings\3384-dp-an06.dgn
 C:\Users\jcoorwell\AppData\Local\Temp\AutoCAD\AutoCAD.Application.Data\2010\Autocad\Autocad.exe