

222-MH STA. 814+00/3.0' LT MANHOLES, TYPE A, 5'-DIA WITH TYPE 20 FRAME AND GRATE H=691.31 INV.= 683.21 (W)(S)

224-MH STA. 816+00/1.5' LT MANHOLES, TYPE A, 5'-DIA WITH TYPE 20 FRAME AND GRATE H=692.59 INV.= 686.54 (E)(S)

226-MH STA. 818+50/1.5' LT MANHOLES, TYPE A, 5'-DIA WITH TYPE 20 FRAME AND GRATE H=693.56 INV.= 685.79 (E)(W)(S)

228-MH STA. 821+00/1.5' LT MANHOLES, TYPE A, 5'-DIA WITH TYPE 20 FRAME AND GRATE H=694.03 INV.= 686.81 (E) INV.= 685.04 (W)(S)

230-MH STA. 823+50/1.5' LT MANHOLES, TYPE A, 5'-DIA WITH TYPE 20 FRAME AND GRATE H=693.80 INV.= 687.56 (W)(S)

232-MH STA. 824+20/1.5' LT MANHOLES, TYPE A, 6'-DIA WITH TYPE 20 FRAME AND GRATE RESTRICTOR PLATE H=693.90 INV.= 685.17 (E) INV.= 680.58 (W)

234-CB STA. 824+90/1.5' RT CATCH BASINS, TYPE A, 4'-DIA WITH TYPE 21 FRAME AND GRATE H=693.63 INV.=685.36 (N)

235-MH STA. 825+00/1.5' LT MANHOLES, TYPE A, 5'-DIA WITH TYPE 21 FRAME AND GRATE H=693.60 INV.= 685.34 (E)(W)(S)

236-CB STA. 825+00/1.5' RT CATCH BASINS, TYPE A, 4'-DIA WITH TYPE 21 FRAME AND GRATE H=693.59 INV.=685.39 (N)

223-CB STA. 814+00/2.5' RT CATCH BASINS, TYPE A, 4'-DIA WITH TYPE 20 FRAME AND GRATE H=691.26 INV.=683.29 (N)

225-CB STA. 816+00/1.5' RT CATCH BASINS, TYPE A, 4'-DIA WITH TYPE 20 FRAME AND GRATE H=692.54 INV.=686.59 (N)

227-CB STA. 818+50/1.5' RT CATCH BASINS, TYPE A, 4'-DIA WITH TYPE 20 FRAME AND GRATE H=693.50 INV.=685.84 (N)

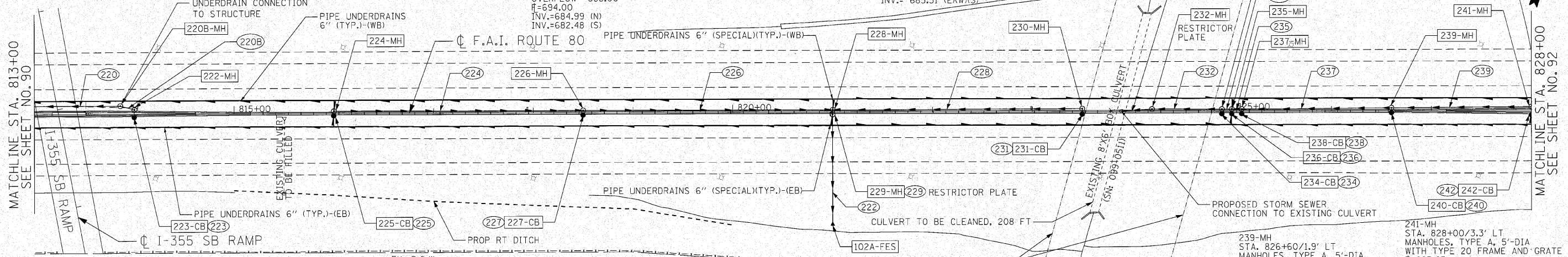
229-MH STA. 821+00/1.5' RT MANHOLES, TYPE A, 6'-DIA WITH TYPE 20 FRAME AND GRATE RESTRICTOR PLATE ORIFICE SIZE = 12" OVERFLOW= 688.00 H=694.00 INV.=684.99 (N) INV.=682.48 (S)

231-CB STA. 823+50/1.5' RT CATCH BASINS, TYPE A, 4'-DIA WITH TYPE 20 FRAME AND GRATE H=693.82 INV.=687.61 (N)

233-MH STA. 824+90/1.5' LT MANHOLES, TYPE A, 5'-DIA WITH TYPE 21 FRAME AND GRATE H=693.64 INV.= 685.31 (E)(W)(S)

237-MH STA. 825+10/1.5' LT MANHOLES, TYPE A, 5'-DIA WITH TYPE 21 FRAME AND GRATE H=693.64 INV.= 685.37 (E)(W)(S)

102A-FES STA. 821+00/110.4' RT PRECAST REINFORCED CONCRETE FLARED END SECTIONS, 18" INV.=682.16



225, 227, 231, 234, 235, 238, 240 STORM SEWERS, CLASS A, TYPE 2, 12" 5' @ 1.00%

222 STORM SEWERS, JACKED IN PLACE, 18" 105' @ 0.30%

224 STORM SEWERS, CLASS A, TYPE 2, 18" 250' @ 0.30% TBF=107 CY

228 EX. R.O.W. STORM SEWERS, CLASS A, TYPE 2, 30" 250' @ 0.30% TBF=98 CY

232 STORM SEWERS, CLASS A, TYPE 2, 42" 70' @ 0.20% TBF=65 CY

235 STORM SEWERS, CLASS A, TYPE 2, 42" 10' @ 0.30% TBF=9 CY

239 STORM SEWERS, CLASS A, TYPE 2, 42" 140' @ 0.30% TBF=132 CY

229 STORM SEWERS, CLASS A, TYPE 2, 36" 5' @ 1.00% TBF=5 CY

220B-MH STA. 813+86/8.2' LT MANHOLES, TYPE A, 5'-DIA WITH TYPE 1 FRAME, CLOSED LID T/F=691.37 INV.= 683.17 (E)(W)

238-CB STA. 825+10/1.5' RT CATCH BASINS, TYPE A, 4'-DIA WITH TYPE 21 FRAME AND GRATE H=693.63 INV.=685.42 (N)

240-CB STA. 826+60/1.8' RT CATCH BASINS, TYPE A, 4'-DIA WITH TYPE 20 FRAME AND GRATE H=694.19 INV.=685.87 (N)

242-CB STA. 828+00/2.8' RT CATCH BASINS, TYPE A, 4'-DIA WITH TYPE 20 FRAME AND GRATE H=694.95 INV.=686.32 (N)

220 STORM SEWERS, CLASS A, TYPE 2, 24" 95' @ 0.31% TBF=80 CY

223 STORM SEWERS, CLASS A, TYPE 2, 12" 8' @ 1.00% TBF=6 CY

226 STORM SEWERS, CLASS A, TYPE 2, 36" 250' @ 0.30% TBF=230 CY

230 STORM SEWERS, CLASS A, TYPE 2, 42" 27' @ 0.19% TBF=60 CY

233 STORM SEWERS, CLASS A, TYPE 2, 42" 10' @ 0.30% TBF=9 CY

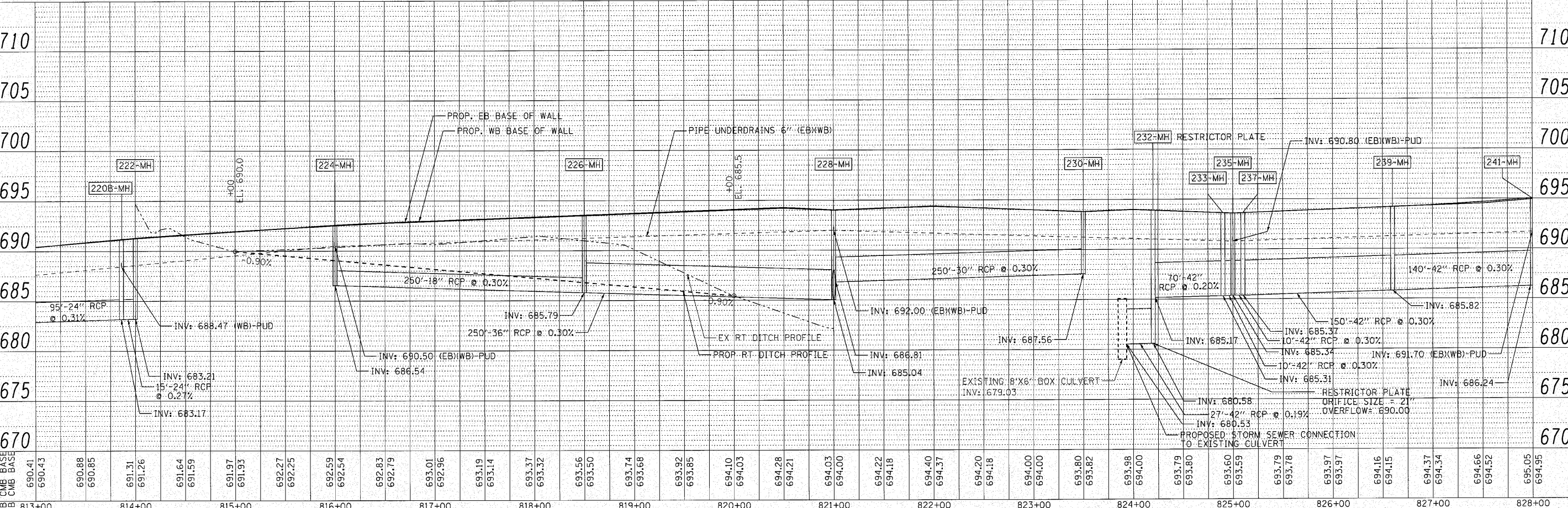
237 STORM SEWERS, CLASS A, TYPE 2, 42" 150' @ 0.30% TBF=131 CY

242 STORM SEWERS, CLASS A, TYPE 2, 12" 8' @ 1.00% TBF=7 CY

220B STORM SEWERS, CLASS A, TYPE 2, 24" 15' @ 0.27% TBF=13 CY

239-MH STA. 826+60/1.9' LT MANHOLES, TYPE A, 5'-DIA WITH TYPE 20 FRAME AND GRATE H=694.20 INV.= 685.82 (E)(W)(S)

241-MH STA. 828+00/3.3' LT MANHOLES, TYPE A, 5'-DIA WITH TYPE 20 FRAME AND GRATE H=695.05 INV.= 686.24 (E)(W)(S)



ENGINEERING CONSULTANT	USER NAME = coorfw11	DESIGNED - CRC	REVISED -	<b>STATE OF ILLINOIS</b> <b>DEPARTMENT OF TRANSPORTATION</b> <b>F.A.I. 80 FROM US 30 TO NS RAILROAD</b> <b>PROPOSED DRAINAGE PLAN AND PROFILE</b>	F.A.I. RTE. 80	SECTION 99-5-Y	COUNTY WILL	TOTAL SHEETS 276	SHEET NO. 91	
	PLOT SCALE = 5/8" = 1'	DRAWN - JMK	REVISED -		SCALE: 1" = 50'	SHEET NO. 91 OF	SHEETS	STA. 813+00 TO STA. 828+00	CONTRACT NO. 60147	ILLINOIS FED. AID PROJECT
	PLOT DATE = 10/27/2010	CHECKED - MRJ	REVISED -							
		DATE = 10/27/2010	REVISED -							

DATE	BY	REVISION

DATE	BY	REVISION

n:\proj\3384.vz\_west\design\drainage\3384-drain08.dgn