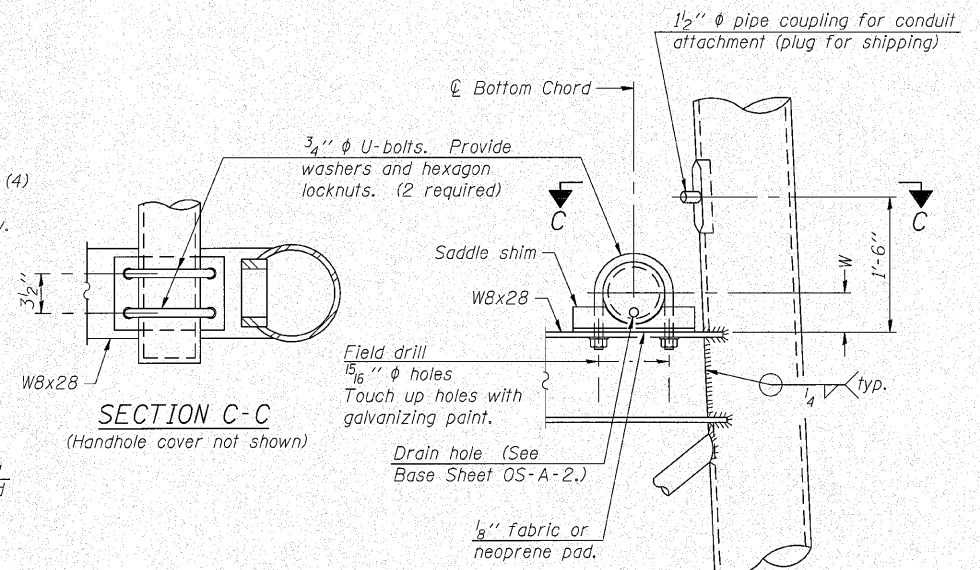
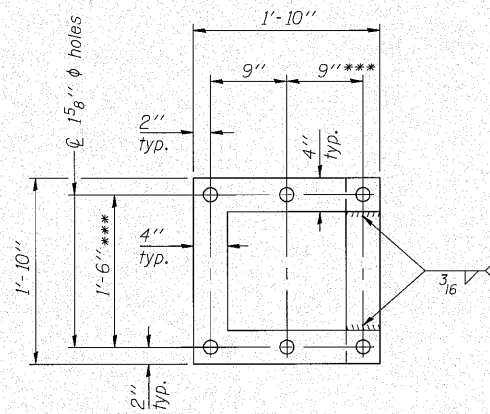
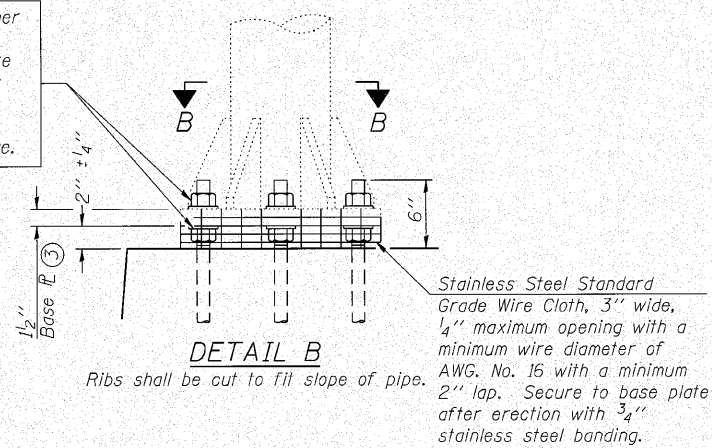
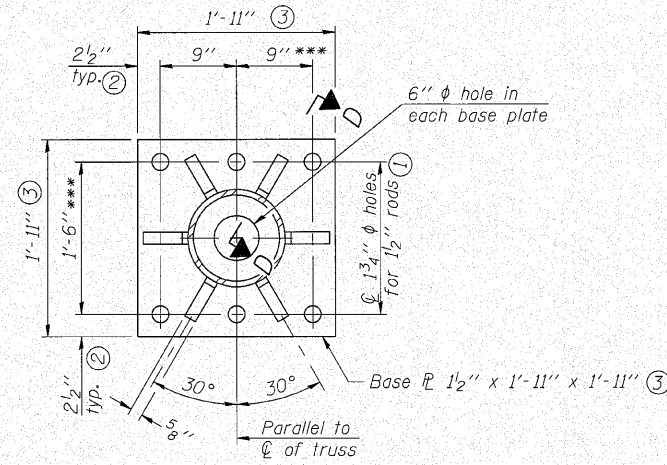


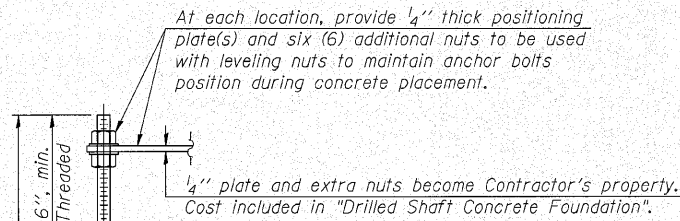
Hexagon locknut and washer (top), leveling nut and washer (bottom). Galvanize per AASHTO M232. Nuts shall each be tightened against base plate with 200 lb.-ft. minimum torque.



*** Verify existing dimensions. Holes in positioning plates and anchor plates shall match existing hole spacing.

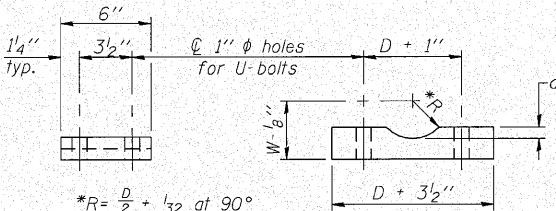


POSITIONING PLATE(S)



ANCHOR ROD DETAIL

Anchor rods shall conform to AASHTO M314 Grade 36 or 55 and meet Charpy V-Notch (CVN) energy of 15 lb.-ft. at 40° F. Galvanize upper 12" per AASHTO M232. No welding shall be permitted on rods.



SADDLE SHIM DETAIL

ASTM B26 Alloy 356-F
or
ASTM B209 Alloy 6061-T651
(4 required per sign truss)
Existing

| Truss Chord Nominal Dia. | a |
|--------------------------|--------|
| 7" | 1" |
| 8 1/2" | 1 1/4" |
| 9" | 1 3/8" |

TYPE III-A TRUSS

12" Ø PIPE SUPPORT FRAME DETAILS

(Sta. 839+88)

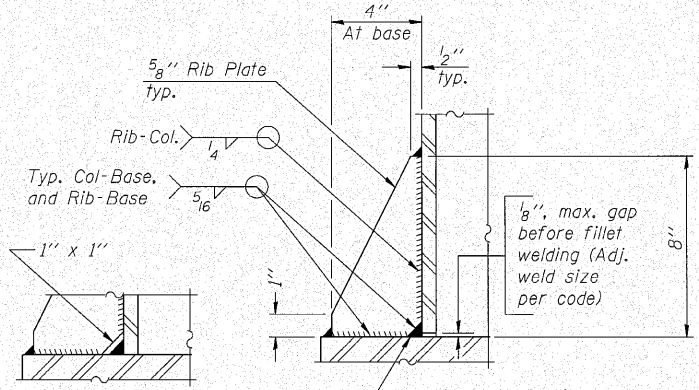
Notes:
For Type III-A Truss spans greater than 150 ft. and up to 160 ft.:

- ① 1 3/4" Ø rod, 2" Ø holes
- ② 2 3/4" edge distance
- ③ Base Pl. 1 5/8" x 1'-11 1/2" x 1'-11 1/2"

** Alternate detail if welding col. to base plate first, then snip inside corner of ribs. Terminate weld on rib 1/4" from snip.

SECTION D-D

Existing



OS4-A-8aA 7-1-10

| | | | | | | | | | | |
|--|---------------------|----------------|-----------|---|---|---------------------------|----------------|-------------|------------------|---------------|
| FILE NAME = | USER NAME = mthomas | DESIGNED - AMK | REVISED - | STATE OF ILLINOIS DEPARTMENT OF TRANSPORTATION | OVERHEAD SIGN STRUCTURES SUPPORT FRAME FOR TYPE III-A ALUMINUM TRUSS | F.A.I. R.T.E. = 80 | SECTION 99-5-Y | COUNTY WILL | TOTAL SHEETS 276 | SHEET NO. 138 |
| CONTRACTING ENGINEERS | CHECKED - BWS | REVISIONS | | | | CONTRACT NO. 60147 | | | | |
| CONSULTING ENGINEERS | DRAWN - SAT | REVISED - | | | | ILLINOIS FED. AID PROJECT | | | | |
| 1887 North Commercial Avenue Suite 112 Chicago, Illinois 60606 Tel: 773-334-1111 Fax: 773-334-1111 Email: info@clorba.com | CHECKED - BWS | REVISED - | | | | SHEET NO. 3 OF 9 SHEETS | | | | |