

PLAN

HEAVY DUTY HANDHOLE MINIMUM DIMENSIONS (UNHINGED)

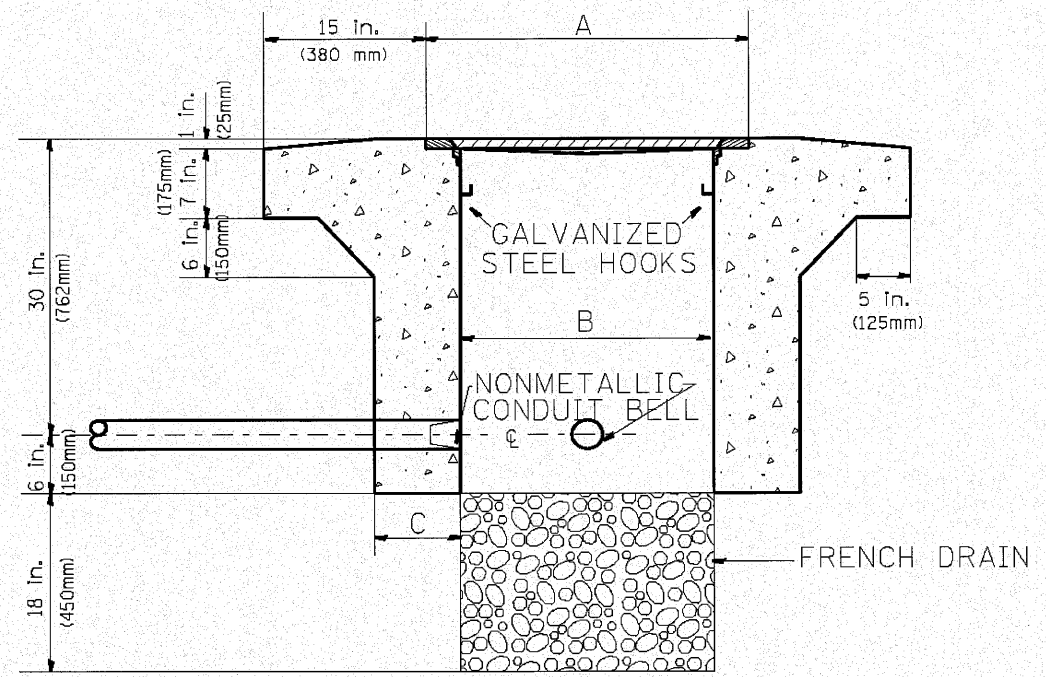
A	28" (711 mm)
B	22" (559 mm)
C	8" (200 mm)

(FRAME AND COVER 260 LBS. (118 Kg.) MIN.)

HEAVY DUTY HANDHOLE SPECIAL MINIMUM DIMENSIONS

A	31.5" (800 mm)
B	30" (762 mm)
C	10" (250 mm)

(FRAME AND COVER 405 LBS. (184 Kg. (405))



ELEVATION

PC CONCRETE - HEAVY DUTY HAND HOLE

c:\p\13381\13381.dwg

<p>ENGINEERING CONSULTANT Clorba Group, Inc. CONSULTING ENGINEERS 2001 North Cicero Avenue, Suite 100 Chicago, IL 60642 Tel: 773.776.6555 Fax: 773.776.4014 Fax: 773.776.6555</p>	USER NAME = mazag	DESIGNED - R.L.	REVISED - 04/97	<p>STATE OF ILLINOIS DEPARTMENT OF TRANSPORTATION TRAFFIC SYSTEMS CENTER</p>	PC CONCRETE - HEAVY DUTY HAND HOLE			F.A. RTE.	SECTION	COUNTY	TOTAL SHEETS	SHEET NO.
	PLOT SCALE = 1/8" = 1' / IN.	DRAWN - G.M.	REVISED -		SCALE: NONE	SHEET NO.	OF SHEETS	STA.	TO STA.	80	99-5-Y	WILL
PLOT DATE = 8/27/2010	CHECKED - R.L.	DATE - 09/11/96	REVISED -				FED. ROAD DIST. NO.			ILLINOIS FED. AID PROJECT		
								CONTRACT NO. 60147				