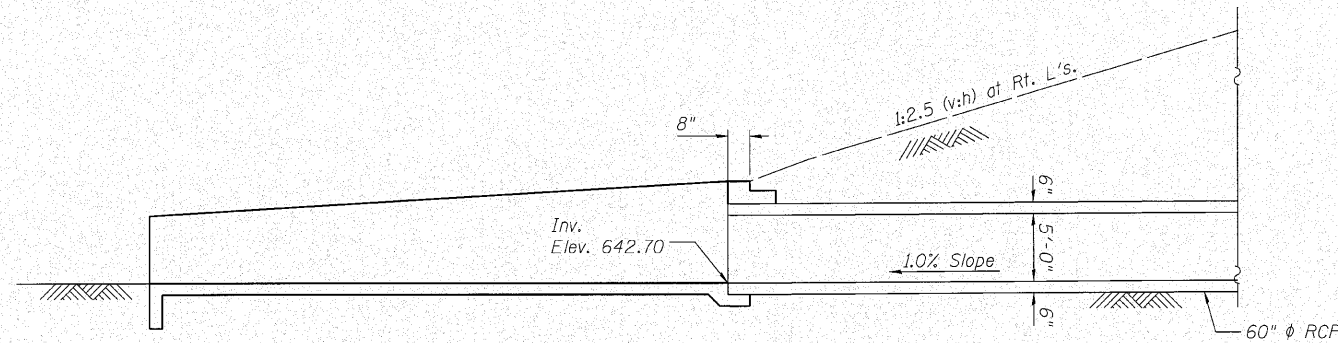


DESIGN STRESSES:

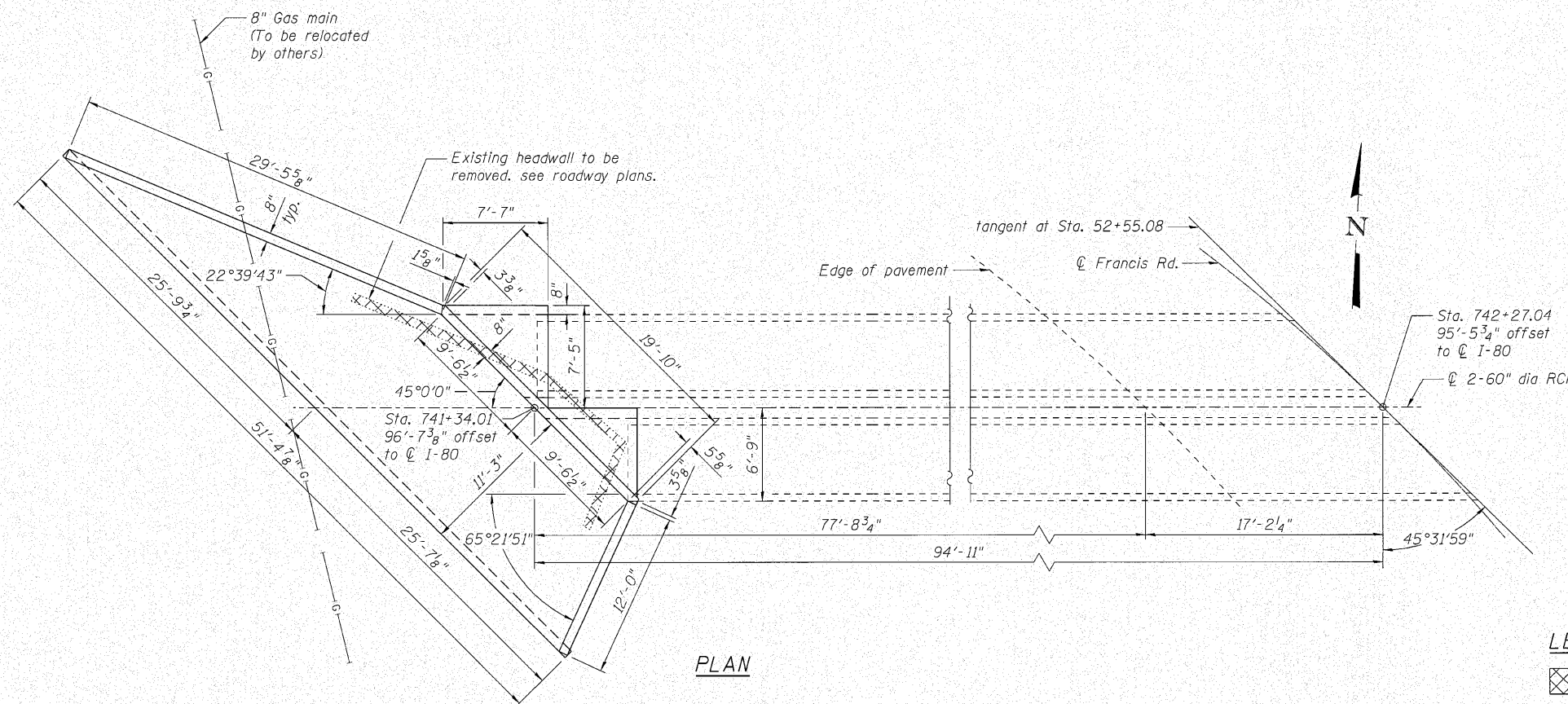
FIELD UNITS
 $f'_c = 3,500$ psi (Concrete)
 $f_y = 60,000$ psi (Reinforcement)

GENERAL NOTES:

- All exposed concrete edges shall have a $\frac{3}{4}$ " x 45° chamfer, Except where shown otherwise. Chamfer on vertical edges shall be continued a minimum of one foot below finished ground level.
- Reinforcement bars, including epoxy-coated reinforcement bars, shall conform to the requirements of ASTM A706, Grade 60 (IL Modified).
- Reinforcement bars designated "(E)" shall be epoxy coated.
- Bars noted thus, 3 x 2-#5 indicated 3 lines of bars with 2 lengths of bars per line.
- Cover from the face of concrete to face of reinforcement shall be 3" for surfaces formed against earth and 2" for all other surfaces unless otherwise shown.
- No construction joints except those shown on the plans will be allowed unless approved by the engineer. All construction joints shall be bonded.
- For backfilling and embankment see article 206.4 of standard specifications.



LONGITUDINAL SECTION



PLAN

BILL OF MATERIAL

Bar	No.	Size	Length	Shape
d ₃₀ (E)	35	#4	13'-6"	□
h ₃₀ (E)	15	#4	19'-0"	—
h ₃₁ (E)	15	#4	33'-6"	—
h ₃₂ (E)	7	#4	29'-2"	—
h ₃₃ (E)	7	#4	11'-8"	—
h ₃₄ (E)	7	#4	9'-0"	—
h ₃₅ (E)	7	#4	6'-4"	—
h ₃₆ (E)	28	#4	8'-7"	—
h ₃₇ (E)	28	#4	6'-10"	—
h ₃₈ (E)	2	#5	19'-1"	—
s ₃₀ (E)	16	#5	4'-0"	—
v ₃₀ (E)	41	#5	8'-1"	L
v ₃₁ (E)	16	#4	9'-2"	┌
Concrete Structures			Cu. Yd.	23.4
Reinforcement Bars, Epoxy Coated			Pound	1,950

LEGEND:

Existing Removal Headwall

I:\proj\3281\2.west\design\details\3284-Francis Rd Culvert 01 GP.dgn



USER NAME	mthomas	DESIGNED	AMK	REVISED	-
		CHECKED	BWS	REVISED	-
PLOT SCALE		DRAWN	RD	REVISED	-
PLOT DATE	10/27/2010	CHECKED	AMK	REVISED	-

**STATE OF ILLINOIS
DEPARTMENT OF TRANSPORTATION**

**GENERAL PLAN AND ELEVATION
FRANCIS ROAD CULVERT HEADWALL**

SHEET NO. 1 OF 2 SHEETS

F.A.I. R'E.	SECTION	COUNTY	TOTAL SHEETS	SHEET NO.
80	99-5-Y	WILL	276	191
			CONTRACT NO. 60147	
ILLINOIS FED. AID PROJECT				