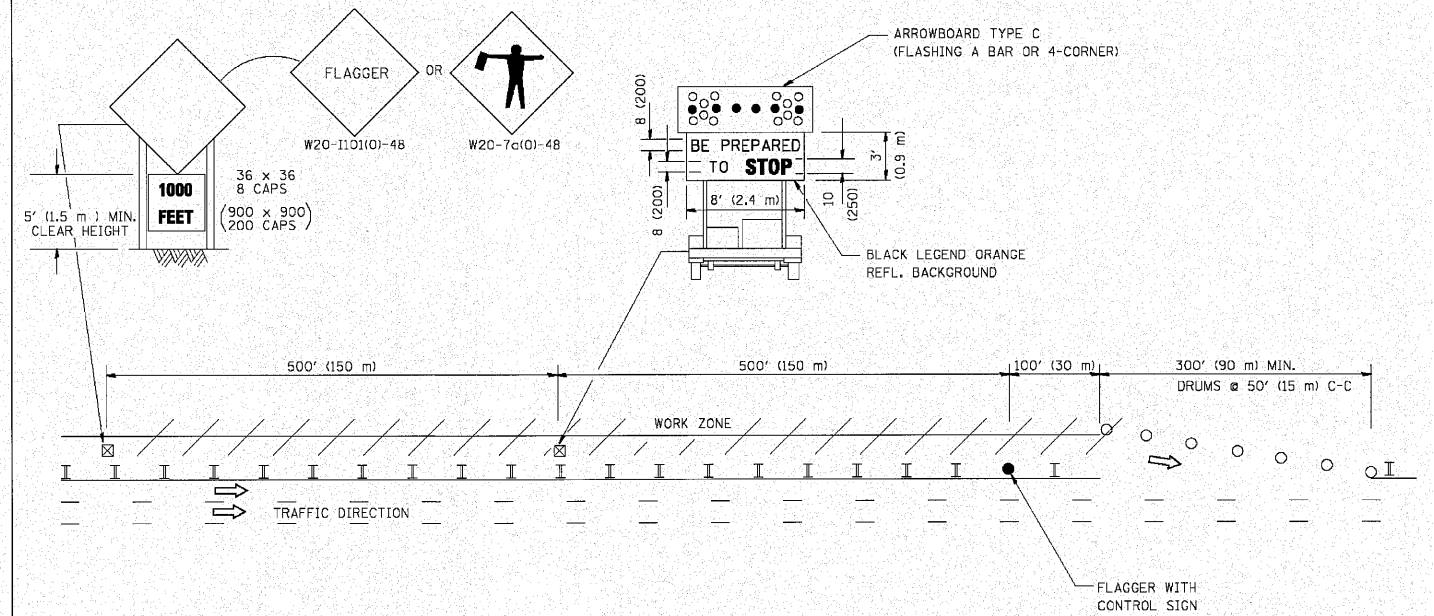
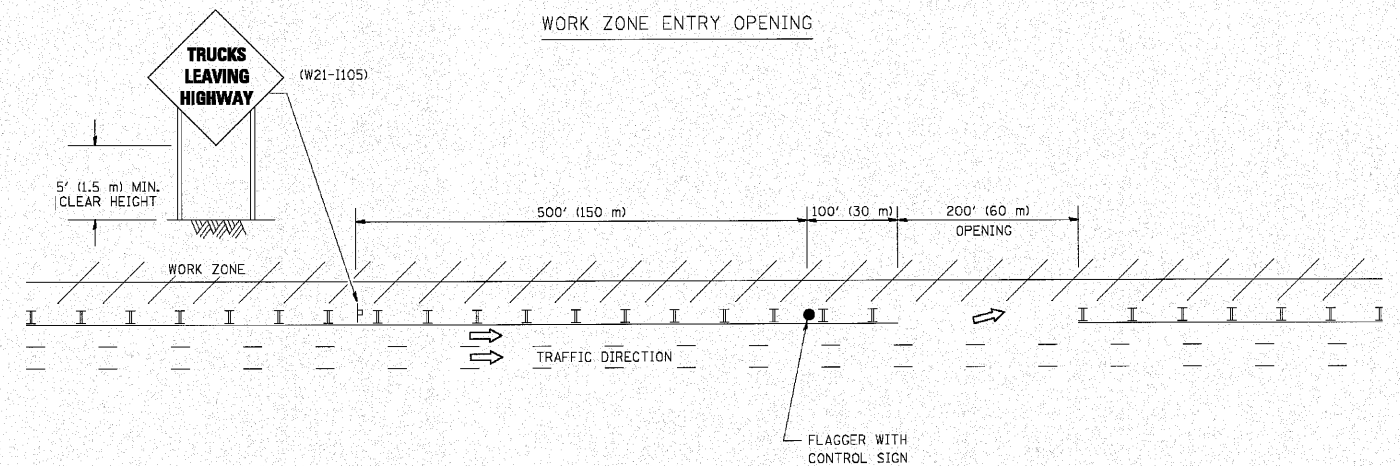


SIGNING FOR FLAGGING OPERATIONS AT WORK ZONE OPENINGS

WORK ZONE EXIT OPENING



WORK ZONE ENTRY OPENING



NOTES:

1. THE ARROWBOARD, THE FLAGGER AHEAD SIGN AND THE TRUCKS LEAVING HIGHWAY SIGN SHALL BE REMOVED OR TURNED AWAY FROM TRAFFIC AND THE EXIT AND ENTRY OPENINGS SHALL BE CLOSED WHEN THE FLAGGING OPERATION CEASES. NON OPERATING EQUIPMENT SHALL COMPLY WITH ARTICLE 701.11
2. WORK ZONE EXIT OPENINGS SHOULD BE A MINIMUM OF ONE HALF MILE APART.
3. EXITING THE WORK ZONE AT ANY PLACE OTHER THAN AT A WORK ZONE EXIT OPENING WILL BE PROHIBITED.
4. ALL VEHICLES SHALL ENTER THE WORK ZONE AT ENTRY OPENINGS, USING THEIR TURN SIGNALS TO WARN MOTORISTS

ALL DIMENSIONS ARE IN INCHES (MILLIMETERS) UNLESS OTHERWISE SHOWN

c:\p\c\1388\1388.dwg

<p>Clorba Group, Inc. CONSULTING ENGINEERS 1872 North Central Expressway, Suite 402 Chicago, IL 60641 Tel: 773.775.8200 Fax: 773.775.4214 Email: info@clorba.com</p>	USER NAME = lajuno	DESIGNED -	REVISED - J.A.F. 04-03
	PLOT SCALE = 60.000' / IN.	DRAWN -	REVISED - J.A.F. 02-06
	PLOT DATE = 1/26/2010	CHECKED -	REVISED - S.P.B. 01-07
		DATE -	REVISED - S.P.B. 12-09

**STATE OF ILLINOIS
DEPARTMENT OF TRANSPORTATION**

**SIGNING FOR FLAGGING OPERATIONS
AT WORK ZONE OPENINGS**

SCALE: NONE SHEET NO. 1 OF 1 SHEETS STA. TO STA.

F.A.I. RTE.	SECTION	COUNTY	TOTAL SHEETS	SHEET NO.
80	99-5-Y	WILL	276	206
TC-18			CONTRACT NO. 60147	
FED. ROAD DIST. NO. 1 ILLINOIS FED. AID PROJECT				