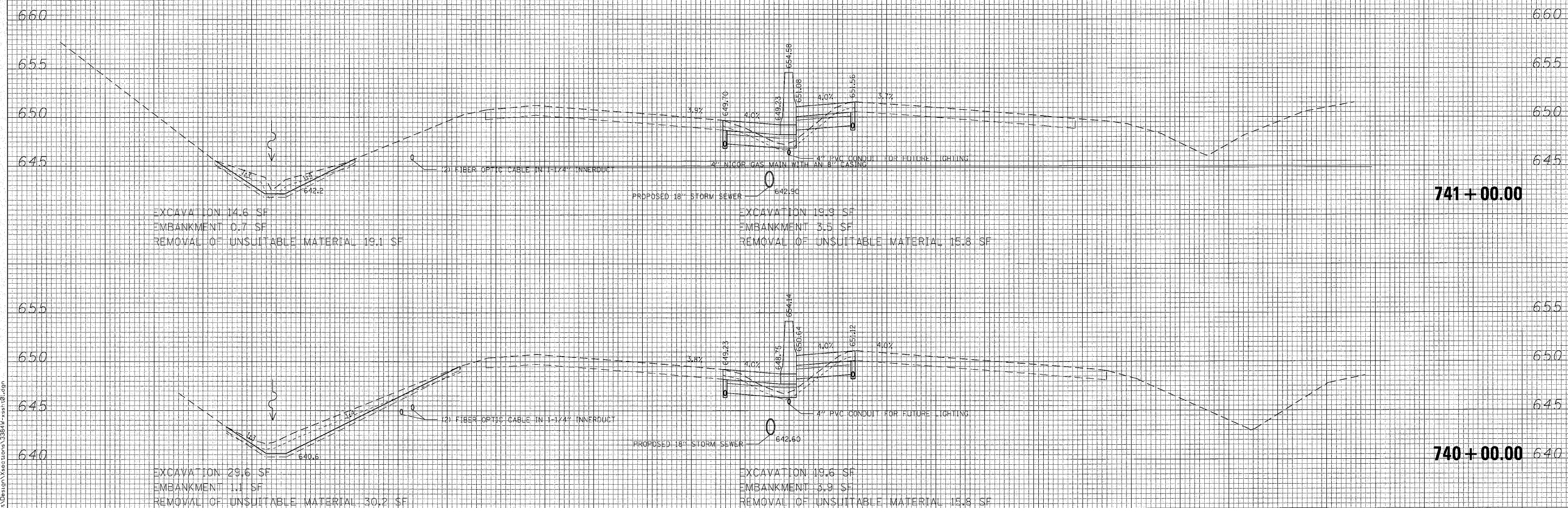


150 140 130 120 110 100 90 80 70 60 50 40 30 20 10 0 10 20 30 40 50 60 70 80 90 100 110 120 130 140 150



FILE NAME = N:\PROJECTS\33842 West Union\Station\33842-10.dwg

150 140 130 120 110 100 90 80 70 60 50 40 30 20 10 0 10 20 30 40 50 60 70 80 90 100 110 120 130 140 150

Ciorba Group, Inc.
 CONSULTING ENGINEERS
 5507 North Cumberland Avenue, Suite 402
 Chicago, Illinois 60656
 Tel. 773.775.4009 Fax 773.775.4014

USER NAME = wlancoaster	DESIGNED - MBT	REVISED -
PLOT SCALE = 1/8" = 10.0000' / IN.	DRAWN - WBL	REVISED -
PLOT DATE = 10/27/2010	CHECKED - MRJ	REVISED -
	DATE - 10/27/2010	REVISED -

STATE OF ILLINOIS
DEPARTMENT OF TRANSPORTATION

FAI 80 FROM US 30 TO NS RAILROAD
CROSS SECTIONS

SCALE: SHEET NO. OF SHEETS STA. 740+00.00 TO STA. 741+00.00

F.A.I. RTE.	SECTION	COUNTY	TOTAL SHEETS	SHEET NO.
80	99-5-Y	WILL	276	223
FED. ROAD DIST. NO. - ILLINOIS FED. AID PROJECT			CONTRACT NO. 60147	