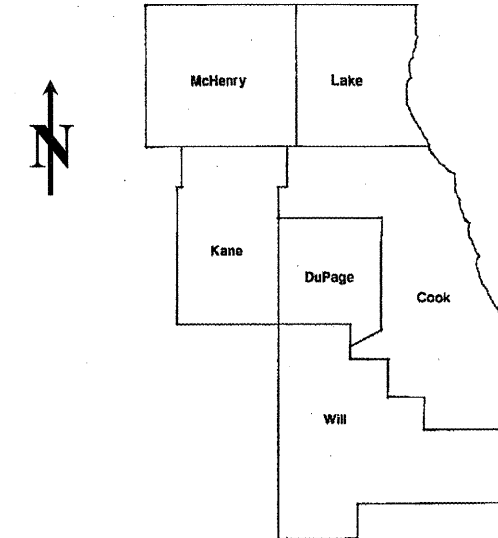


ROUTE	SECTION	COUNTY	TOTAL SHEETS	SHEET NUMBER
FAI 57	2010-087-BP	COOK & WILL	32	1

FOR INDEX OF SHEETS SEE SHEET 2

**CONTRACT NO. 60L83  
D-91-039-11**

**STATE OF ILLINOIS  
DEPARTMENT OF TRANSPORTATION  
DIVISION OF HIGHWAYS  
DISTRICT ONE  
PROPOSED HIGHWAY PLANS**



LOCATION OF IMPROVEMENT INDICATED THUS:

**IMPROVEMENTS ARE  
LOCATED IN THE VILLAGE  
OF PEOTONE AND THE  
CITY OF CHICAGO**

FAI ROUTE 57: I-57  
VARIOUS LOCATIONS  
SECTION 2010-087-BP  
BRIDGE PAINTING  
COOK & WILL COUNTIES  
C-91-039-11

PROJECT: ACIM-057-7(290)356

**SEE LOCATION MAPS  
SHEETS 7 THRU 9**

STATE OF ILLINOIS  
DEPARTMENT OF TRANSPORTATION  
DIVISION OF HIGHWAYS

SUBMITTED: OCTOBER 15, 2010

Diane M. O'Keefe DE  
DEPUTY DIRECTOR OF HIGHWAYS, REGION ENGINEER

Dec 10 2010  
Scott E. Stitt P.E. JR  
ENGINEER OF DESIGN AND ENVIRONMENT

Dec 10 2010  
Christine M. Reed JR  
DIRECTOR, DIVISION OF HIGHWAYS

**PRINTED BY THE AUTHORITY  
OF THE STATE OF ILLINOIS**

C.U.A.N.  
CHICAGO UTILITY ALERT NETWORK  
1-312-744-7000

J.U.L.I.E.  
JOINT UTILITY LOCATION INFORMATION  
FOR EXCAVATION  
(800) 892-0123 OR 811

**PROJECT ENGINEER: ROBERT BORO (847) 705-4178  
PROJECT MANAGER: ISSAM RAYYAN**

**CONTRACT NO. 60L83**

ROUTE	SECTION	COUNTY	TOTAL SHEETS	SHEET NUMBER
FAI 57	2010-087-BP	COOK & WILL	32	2

CONTRACT NO. 60L83

**INDEX OF SHEETS**

- 1 TITLE SHEET
- 2 INDEX OF SHEETS, STATE STANDARDS
- 3 GENERAL NOTES
- 4 GENERAL PAINT NOTES
- 5-6 SUMMARY OF QUANTITIES
- 7-9 LOCATION MAPS
- 10-12 EXISTING BRIDGE PLANS (SN 016-2030, LOC 1)
- 13-15 EXISTING BRIDGE PLANS (SN 016-2127, LOC 2)
- 16-18 EXISTING BRIDGE PLANS (SN 016-0989, LOC 3)
- 19-21 EXISTING BRIDGE PLANS (SN 016-0988, LOC 4)
- 22-24 EXISTING BRIDGE PLANS (SN 016-2037, LOC 5)
- 25-28 EXISTING BRIDGE PLANS (SN 016-2034, LOC 6)
- 29-31 EXISTING BRIDGE PLANS (SN 099-0162, LOC 7)
- 32 TRAFFIC CONTROL FOR SHOULDERS CLOSURES AND PARTIAL RAMP CLOSURES (TC-17)

**STATE STANDARDS**

- 701101-02 OFF-ROAD OPERATIONS, MULTILANE, 15' TO 24" FROM PAVEMENT EDGE
- 701106-02 OFF-ROAD OPERATIONS, MULTILANE, MORE THAN 15' AWAY
- 701400-05 FREEWAY / EXPRESSWAY, APPROACH TO LANE CLOSURE
- 701401-06 FREEWAY / EXPRESSWAY, LANE CLOSURE
- 701411-07 LANE CLOSURE, MULTILANE, AT ENTRANCE OR EXIT RAMP, FOR SPEEDS > 45 MPH
- 701421-03 LANE CLOSURE, MULTILANE, DAY OPERATIONS ONLY, FOR SPEEDS >45 MPH TO 55 MPH
- 701901-01 TRAFFIC CONTROL DEVICES

ILLINOIS DEPARTMENT OF TRANSPORTATION

INDEX OF SHEETS  
STATE STANDARDS

ROUTE	SECTION	COUNTY	TOTAL SHEETS	SHEET NUMBER
FAI 57	2010-087-BP	COOK & WILL	32	3

CONTRACT NO. 60L83

**GENERAL NOTES**

BEFORE STARTING ANY EXCAVATION, THE CONTRACTOR SHALL CALL "J.U.L.I.E." AT (800) 892-0123 OR 811 FOR FIELD LOCATIONS OF BURIED ELECTRIC, TELEPHONE AND GAS UTILITIES. 48 HOURS NOTIFICATION IS REQUIRED.

BEFORE STARTING ANY EXCAVATION IN THE CITY OF CHICAGO, THE CONTRACTOR SHALL CALL "C.U.A.N." AT (312) 744-7000 OR FOR FIELD LOCATIONS OF BURIED ELECTRIC, TELEPHONE AND GAS UTILITIES. 48 HOUR NOTIFICATION IS REQUIRED.

THE CONTRACTOR SHALL COORDINATE CONSTRUCTION ACTIVITIES WITH UTILITY COMPANIES AND THE CITY OF CHICAGO AND THE VILLAGE OF PEOTONE.

WHEN ARTIFICIAL LIGHTING IS UTILIZED IN NIGHT OPERATIONS, THE CONTRACTOR SHALL EXERCISE THE UTMOST PRECAUTIONS IN PREVENTING ADVERSE VISIBILITY TO THE MOTORING PUBLIC AND ADJOINING RESIDENTIAL AREAS.

IT SHALL BE THE CONTRACTOR'S RESPONSIBILITY TO VERIFY ALL DIMENSIONS & CONDITIONS EXISTING IN THE FIELD PRIOR TO CONSTRUCTION & ORDERING OF MATERIALS.

THE CONTRACTOR WILL NOT BE ALLOWED TO SET UP A YARD OR FIELD OFFICE ON STATE PROPERTY WITHOUT WRITTEN PERMISSION FROM THE DEPARTMENT.

THE CONTRACTOR SHALL CONTACT THE DISTRICT ONE TRAFFIC CONTROL SUPERVISOR AT (847)705-4151 FOR EXPRESSWAYS A MINIMUM OF 72 HOURS IN ADVANCE OF BEGINNING WORK.

THE CONTRACTOR SHALL BE REQUIRED TO PROVIDE ACCESS TO ABUTTING PROPERTY AT ALL TIMES DURING THE CONSTRUCTION OF THIS PROJECT.

DO NOT SCALE PLANS FOR CONSTRUCTION DIMENSIONS.

IT SHALL BE THE CONTRACTOR'S RESPONSIBILITY TO PROTECT AND PRESERVE THE EXISTING BRIDGE LIGHTING AT ANY LOCATIONS THAT LIGHTING IS ENCOUNTERED ADJACENT TO AN AREA TO BE CLEANED AND PAINTED.

ILLINOIS DEPARTMENT OF TRANSPORTATION

GENERAL NOTES

ROUTE	SECTION	COUNTY	TOTAL SHEETS	SHEET NUMBER
I-57	2010-087-BP	COOK & WILL	32	4

Contract 60L83

**GENERAL NOTES FOR PAINT**

CLEANING AND PAINTING OF THE EXISTING STRUCTURAL STEEL SHALL BE AS SPECIFIED IN THE SPECIAL PROVISION FOR "CLEANING AND PAINTING EXISTING STEEL STRUCTURES".

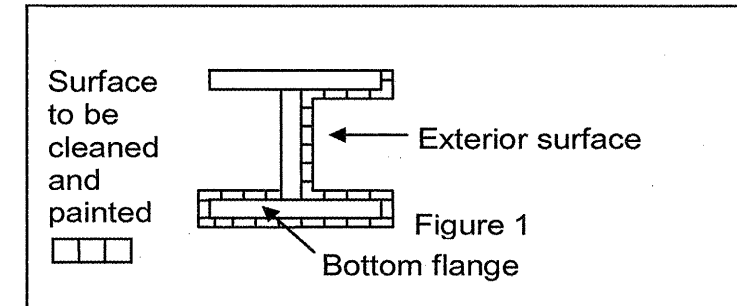
A MINIMUM OF FOUR (4) AIR MONITORS WILL BE REQUIRED AT ALL LOCATIONS, TO MONITOR ABRASIVE BLASTING OPERATIONS. SEE SPECIAL PROVISION FOR "CONTAINMENT AND DISPOSAL OF LEAD PAINT CLEANING RESIDUE."

THE AREAS DESIGNATED TO BE CLEANED PER NEAR WHITE BLAST CLEANING SSPC-SP10 SHALL BE PAINTED ACCORDING TO THE REQUIREMENTS OF PAINT SYSTEM 1 - OZ/E/U. THE COLOR OF THE FINAL FINISH COAT FOR ALL INTERIOR STEEL SURFACES SHALL BE GRAY, MUNSELL NO 5B 7/1. THE COLOR OF THE FINAL FINISH COAT FOR THE EXTERIOR AND BOTTOM FLANGE OF THE FASCIA BEAMS SHALL BE REDDISH BROWN, MUNSELL NO 2.5YR 3/4.

ALL ITEMS (SUCH AS, BUT NOT LIMITED TO: CONDUITS, BRACKETS AND DECK DRAINS) ATTACHED TO THE OUTSIDE OF THE FASCIA BEAMS SHOULD BE CLEANED AND PAINTED.

**LOC'S 1 (SN 016-2030), 2 (SN 016-2127), 3 (SN 016-0989), 4 (SN 016-0988), 5 (SN 016-2037) & 6 (SN 016-2034)**  
ALL EXISTING STEEL SHALL BE CLEANED PER NEAR WHITE BLAST CLEANING SSPC-SP10.

**LOC 7 (SN 099-0162)**  
ALL BEAMS, BEARINGS AND OTHER STRUCTURAL STEEL WITHIN FIVE (5) FT., (MEASURED ALONG THE BEAM) OF EITHER SIDE OF ALL DECK JOINTS, SHALL BE CLEANED PER NEAR WHITE BLAST CLEANING SSPC-SP10. THE EXTERIOR SURFACES AND TOP AND BOTTOM OF THE BOTTOM FLANGE OF THE FASCIA BEAMS (SEE FIGURE 1) SHALL BE CLEANED PER NEAR WHITE BLAST CLEANING SSPC-SP10.



**FASCIA BEAM PAINTING DETAIL**  
**FIGURE 1**

ILLINOIS DEPARTMENT OF TRANSPORTATION

GENERAL PAINT NOTES

ROUTE	SECTION	COUNTY	TOTAL SHEETS	SHEET NUMBER
FAI 57	2010-087-BP	COOK & WILL	32	5

CONTRACT NO. 60L83

SUMMARY OF QUANTITIES										
CODE NO	DESCRIPTION	UNITS	TOTAL	CONSTRUCTION TYPE CODE: 0014						
				LOC 1	LOC 2	LOC 3	LOC 4	LOC 5	LOC 6	LOC 7
67000400	ENGINEER'S FIELD OFFICE, TYPE A	CAL MO	14	2	2	2	2	2	2	2
67100100	MOBILIZATION	L SUM	1	0.15	0.15	0.15	0.15	0.15	0.15	0.1
X5067501	BRIDGE CLEANING AND PAINTING WARRANTY NUMBER 1	L SUM	1	1						
X5067502	BRIDGE CLEANING AND PAINTING WARRANTY NUMBER 2	L SUM	1		1					
X5067503	BRIDGE CLEANING AND PAINTING WARRANTY NUMBER 3	L SUM	1			1				
X5067504	BRIDGE CLEANING AND PAINTING WARRANTY NUMBER 4	L SUM	1				1			
X5067505	BRIDGE CLEANING AND PAINTING WARRANTY NUMBER 5	L SUM	1					1		
X5067506	BRIDGE CLEANING AND PAINTING WARRANTY NUMBER 6	L SUM	1						1	
X7011015	TRAFFIC CONTROL AND PROTECTION (EXPRESSWAYS)	L SUM	1	0.15	0.15	0.15	0.15	0.15	0.15	0.1
Z0007112	CONTAINMENT AND DISPOSAL OF LEAD PAINT CLEANING RESIDUES	L SUM	1	0.14	0.15	0.14	0.15	0.14	0.14	0.14
Z0010501	CLEANING AND PAINTING STEEL BRIDGE NO. 1	L SUM	1	1						
Z0010502	CLEANING AND PAINTING STEEL BRIDGE NO. 2	L SUM	1		1					
Z0010503	CLEANING AND PAINTING STEEL BRIDGE NO. 3	L SUM	1			1				

URBAN  
90% FED.  
10% STATE

COOK CO.

WILL  
CO.

ROUTE	SECTION	COUNTY	TOTAL SHEETS	SHEET NUMBER
FAI 57	2010-087-BP	COOK & WILL	32	6

CONTRACT NO. 60L83

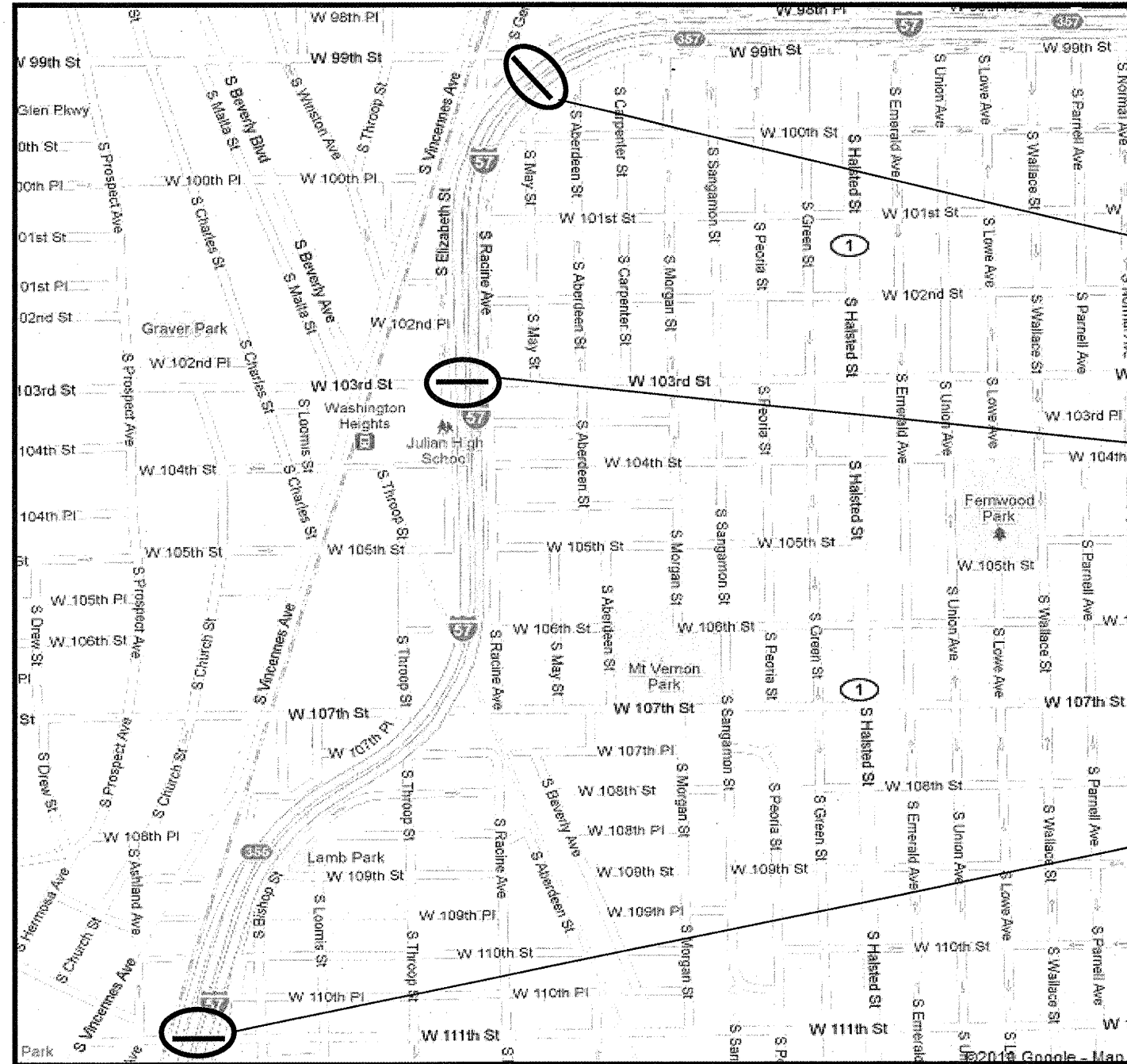
SUMMARY OF QUANTITIES											
CODE NO	DESCRIPTION	UNITS	TOTAL	CONSTRUCTION TYPE CODE: 0014							WILL CO.
				COOK CO.							
				LOC 1	LOC 2	LOC 3	LOC 4	LOC 5	LOC 6	LOC 7	
Z0010504	CLEANING AND PAINTING STEEL BRIDGE NO. 4	L SUM	1				1				
Z0010505	CLEANING AND PAINTING STEEL BRIDGE NO. 5	L SUM	1					1			
Z0010506	CLEANING AND PAINTING STEEL BRIDGE NO. 6	L SUM	1						1		
Z0010507	CLEANING AND PAINTING STEEL BRIDGE NO. 7	L SUM	1							1	
Z0026346	NIGHTTIME WORK ZONE LIGHTING	L SUM	1	0.15	0.15	0.15	0.15	0.15	0.15	0.1	

ROUTE	SECTION	COUNTY	TOTAL SHEETS	SHEET NUMBER
FAI 57	2010-087-BP	COOK & WILL	32	7

R 14 E

CONTRACT NO. 60L83

T 37 N



**LOCATION 1:**  
SN 016-2030  
**GENOA ST. OVER I-57**  
CITY OF CHICAGO

**LOCATION 2:**  
SN 016-2127  
**103<sup>RD</sup> ST. OVER I-57**  
CITY OF CHICAGO

**LOCATION 3:**  
SN 016-0989  
**111<sup>TH</sup> ST. OVER I-57**  
CITY OF CHICAGO

**TRAFFIC DATA:**

I-57:  
2008 ADT = 147,100  
POSTED SPEED LIMIT = 55 MPH

GENOA ST.:  
2006 ADT = 9,600  
POSTED SPEED LIMIT = 30 MPH

103<sup>RD</sup> ST.:  
2006 ADT = 12,400  
POSTED SPEED LIMIT = 30 MPH

111<sup>TH</sup> ST.:  
2006 ADT = 11,100  
POSTED SPEED LIMIT = 30 MPH

**CALUMET TOWNSHIP**  
**COOK COUNTY**

**ILLINOIS DEPARTMENT OF**  
**TRANSPORTATION**

**LOCATION MAP**

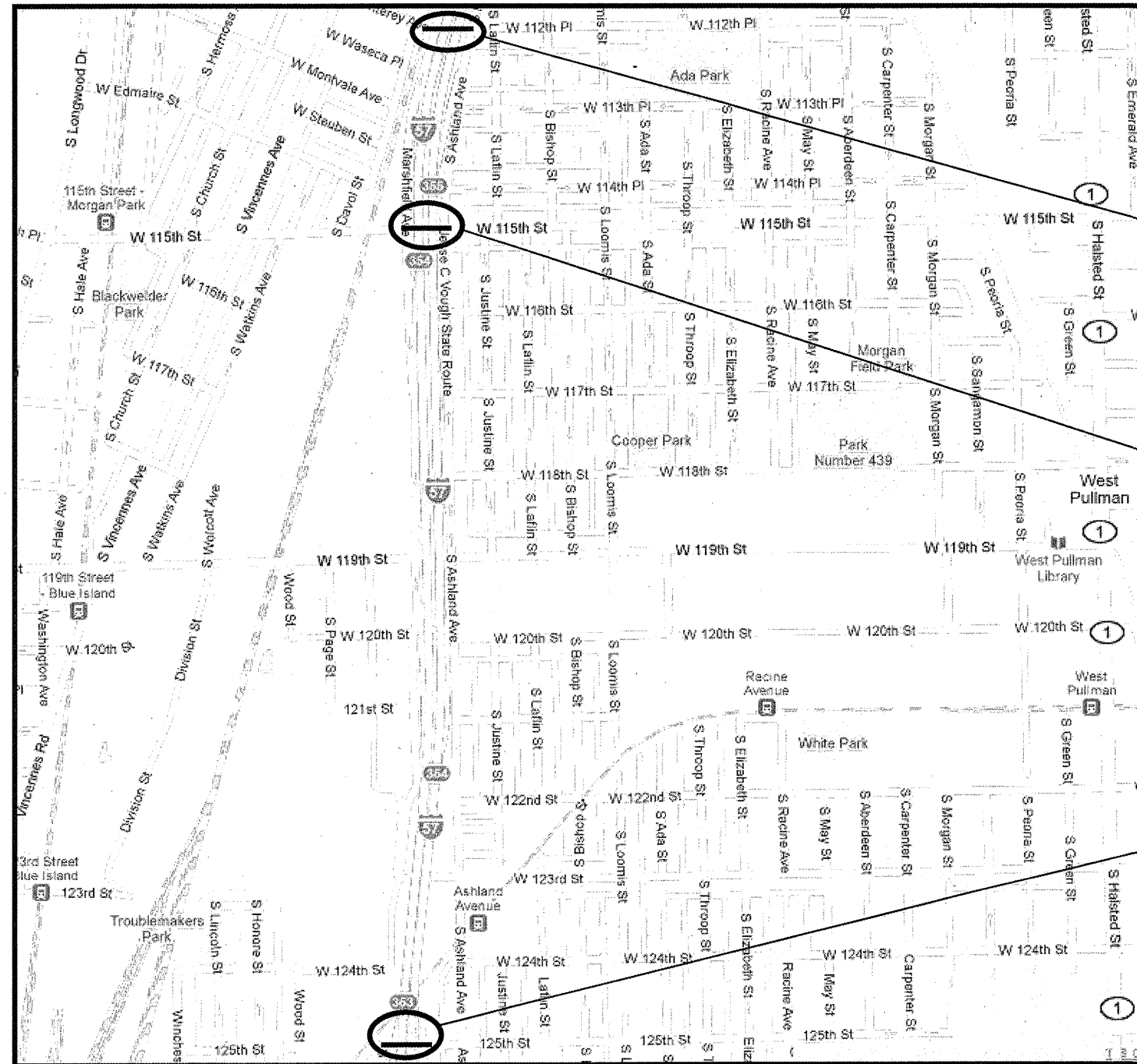
**LOCATION 1: SN 016-2030 ✓**  
**LOCATION 2: SN 016-2127 ✓**  
**LOCATION 3: SN 016-0989 ✓**

<b>ROUTE</b> FAI 57	<b>SECTION</b> 2010-087-BP	<b>COUNTY</b> COOK & WILL	<b>TOTAL SHEETS</b> 32	<b>SHEET NUMBER</b> 8
------------------------	-------------------------------	------------------------------	---------------------------	--------------------------

**R 14 E**

**CONTRACT NO. 60L83**

**T 37 N**



**LOCATION 4:**  
SN 016-0988  
**112<sup>th</sup> ST. OVER I-57**  
**CITY OF CHICAGO**

**LOCATION 5:**  
SN 016-2037  
**115<sup>th</sup> ST. OVER I-57**  
**CITY OF CHICAGO**

**LOCATION 6:**  
SN 016-2034  
**125<sup>th</sup> ST. OVER I-57**  
**CITY OF CHICAGO**

**TRAFFIC DATA:**

**I-57:**  
2008 ADT = 146,500  
POSTED SPEED LIMIT = 55 MPH

**112<sup>th</sup> ST.(Monterey Ave.):**  
2006 ADT = 19,200  
POSTED SPEED LIMIT = 30 MPH

**115<sup>th</sup> ST.:**  
2006 ADT = 8,600  
POSTED SPEED LIMIT = 30 MPH

**125<sup>th</sup> ST.:**  
2006 ADT = 19,800  
POSTED SPEED LIMIT = 30 MPH

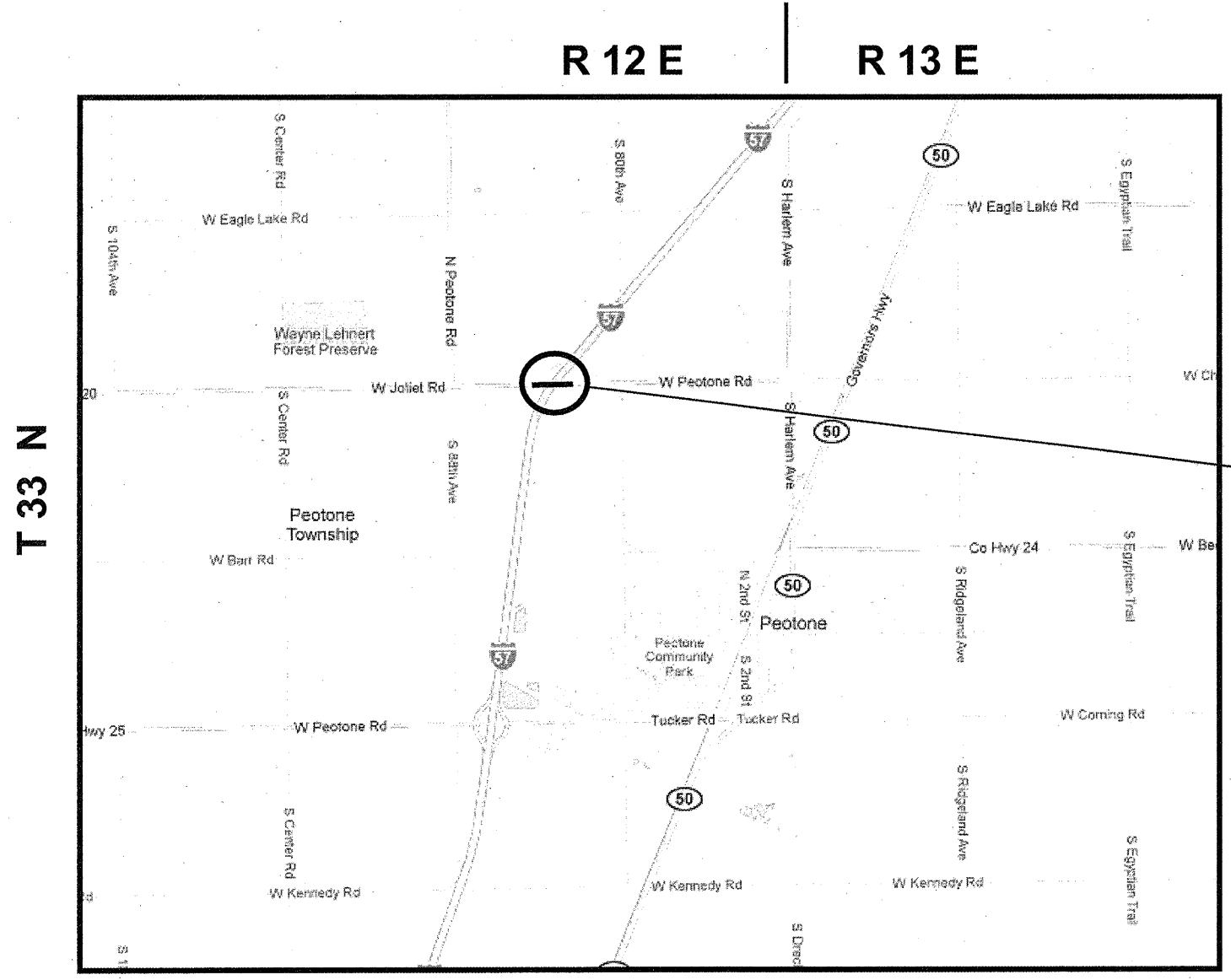
**CALUMET TOWNSHIP**  
**COOK COUNTY**

**ILLINOIS DEPARTMENT OF**  
**TRANSPORTATION**  
  
**LOCATION MAP**  
  
LOCATION 4: SN 016-0988 ✓  
LOCATION 5: SN 016-2037 ✓  
LOCATION 6: SN 016-2034 ✓



ROUTE	SECTION	COUNTY	TOTAL SHEETS	SHEET NUMBER
VARIOUS	2010-087-BP	COOK & WILL	32	9

CONTRACT NO. 60L83



**LOCATION 7:**  
**SN 099-0162**  
**PEOTONE RD. OVER I-57**  
**VILLAGE OF PEOTONE**

**PEOTONE TOWNSHIP**  
**WILL COUNTY**

**TRAFFIC DATA:**

I-57:

2007 ADT = 62,200  
 POSTED SPEED LIMIT = 65 MPH

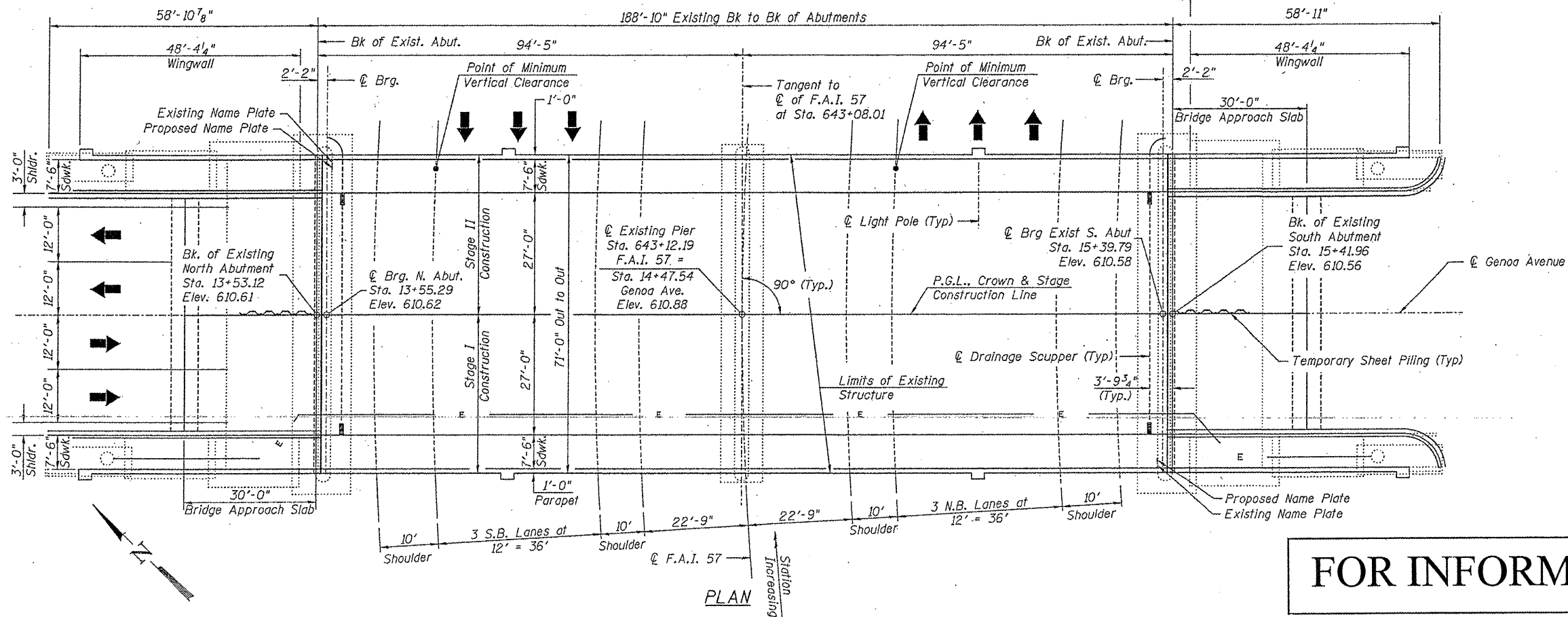
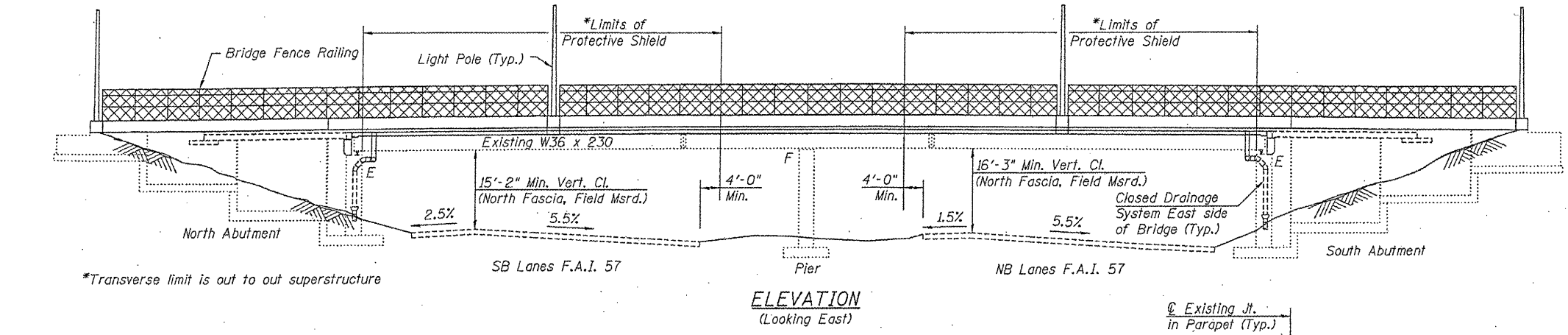
PEOTONE RD.:

2008 ADT = 1,850  
 POSTED SPEED LIMIT = 40 MPH

**ILLINOIS DEPARTMENT OF**  
**TRANSPORTATION**  
  
**LOCATION MAP**  
  
**LOCATION 7: SN 099-0162**

<b>ROUTE</b> FAI 57	<b>SECTION</b> 2010-087-BP	<b>COUNTY</b> COOK & WILL	<b>TOTAL SHEETS</b> 32	<b>SHEET NUMBER</b> 10
------------------------	-------------------------------	------------------------------	---------------------------	---------------------------

CONTRACT NO. 60L83



**FOR INFORMATION ONLY**

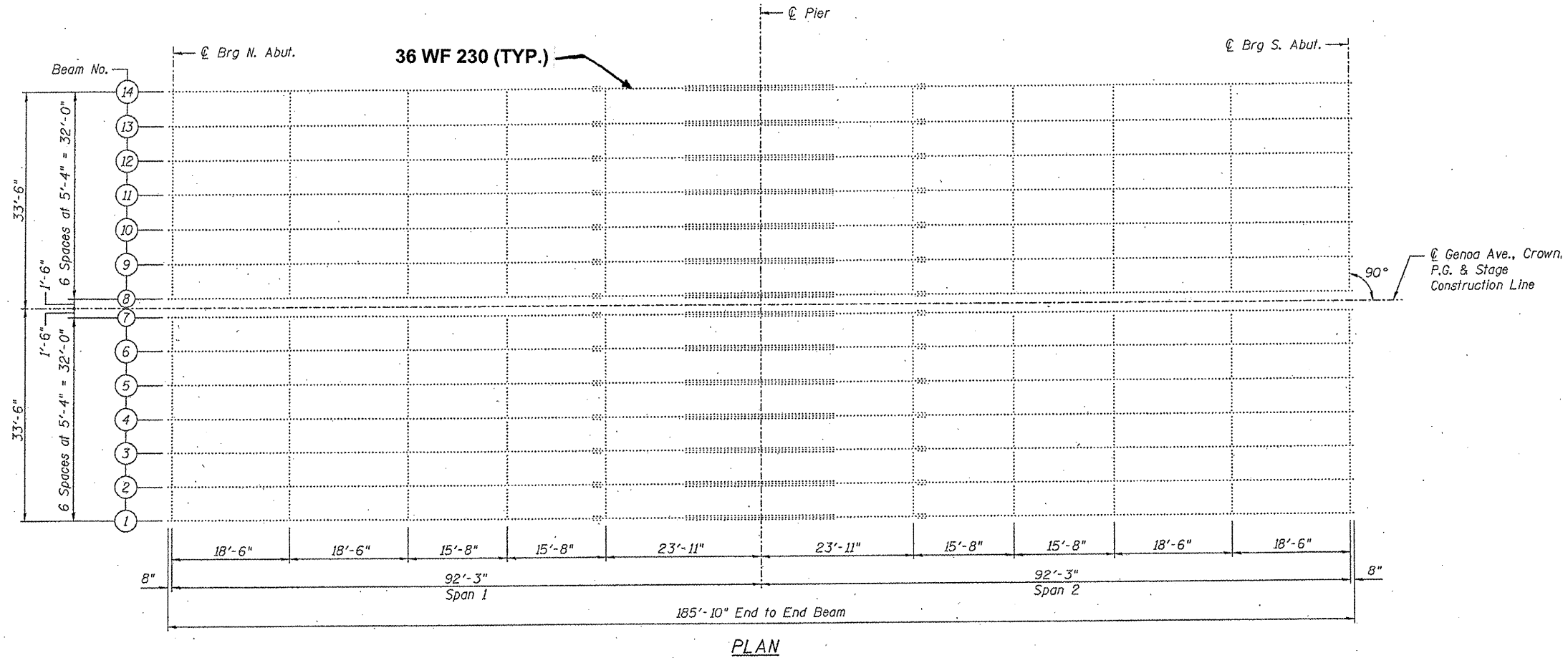
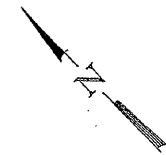
**ILLINOIS DEPARTMENT OF  
TRANSPORTATION**

**EXISTING BRIDGE PLAN**

**SN 016-2030  
GENOA ST. over I-57**

ROUTE	SECTION	COUNTY	TOTAL SHEETS	SHEET NUMBER
FAI 57	2010-087-BP	COOK & WILL	32	11

CONTRACT NO. 60L83



ALL DIAPHRAGMS: 16 WF 36

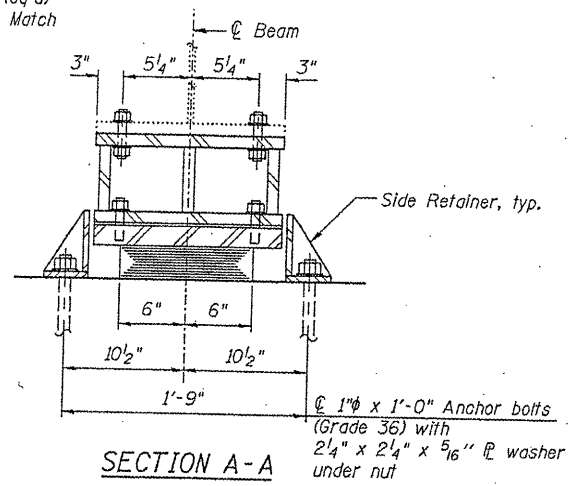
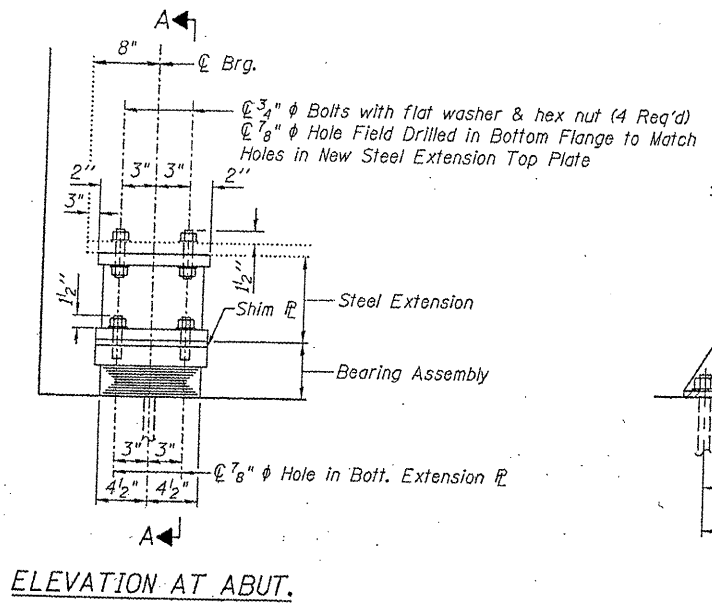
ILLINOIS DEPARTMENT OF  
TRANSPORTATION  
  
EXISTING BRIDGE PLAN

SN 016-2030  
GENOA ST. over I-57

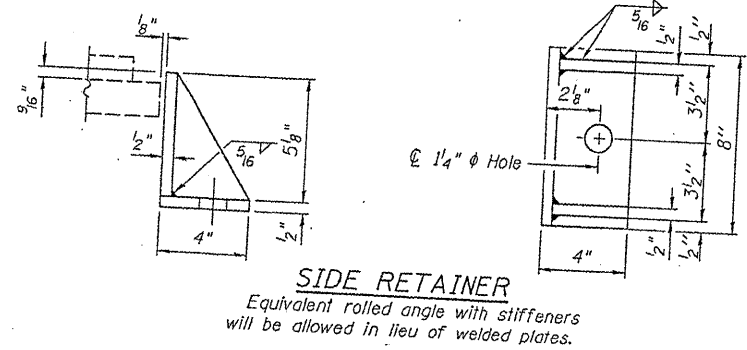
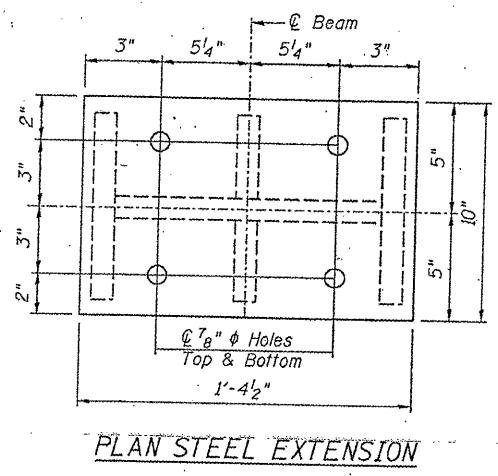
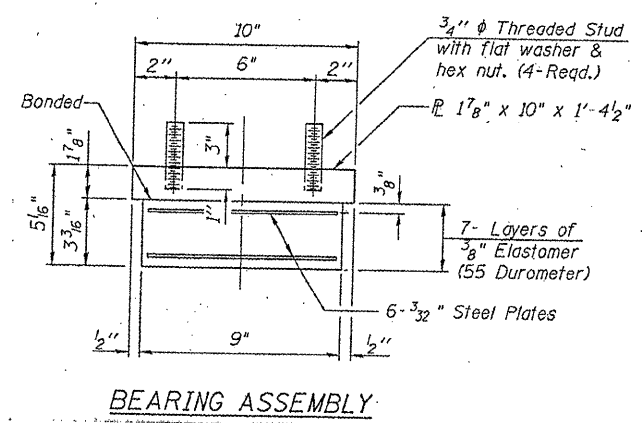
SHEET 2 OF 3

ROUTE	SECTION	COUNTY	TOTAL SHEETS	SHEET NUMBER
FAI 57	2010-087-BP	COOK & WILL	32	12

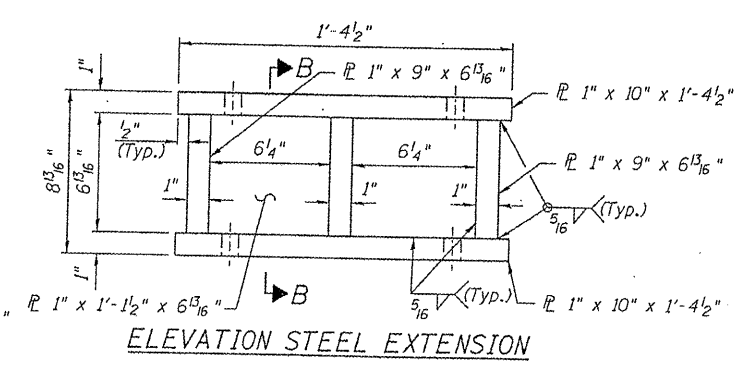
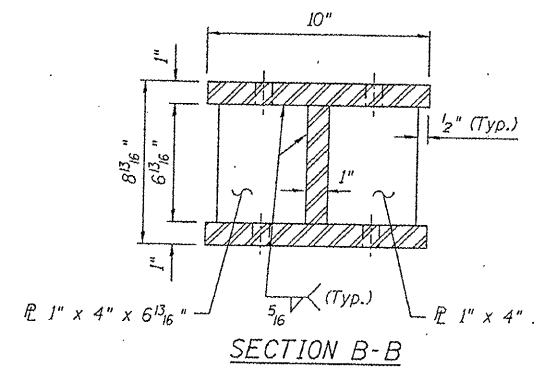
CONTRACT NO. 60L83



TYPE I ELASTOMERIC EXP. BRG.



Note:  
Shim plates shall not be placed under Bearing Assembly.



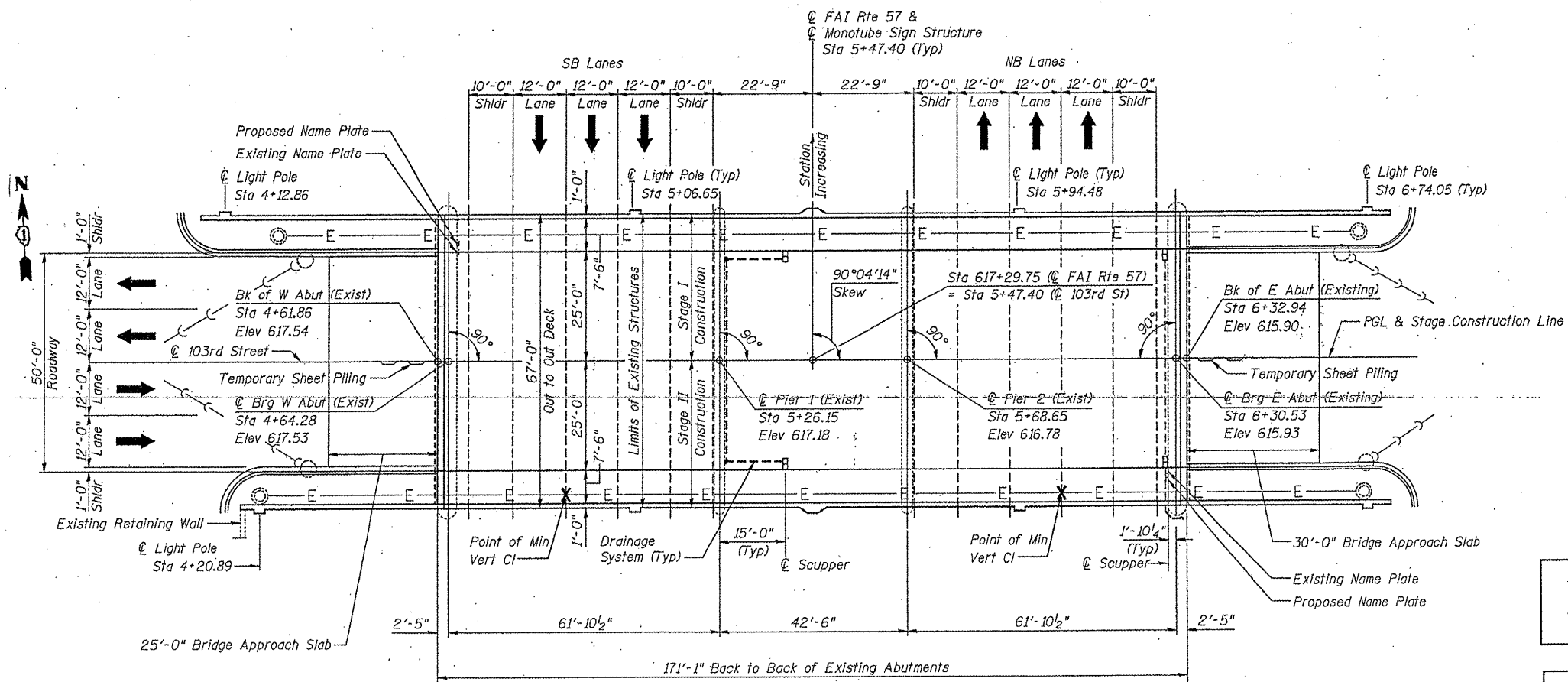
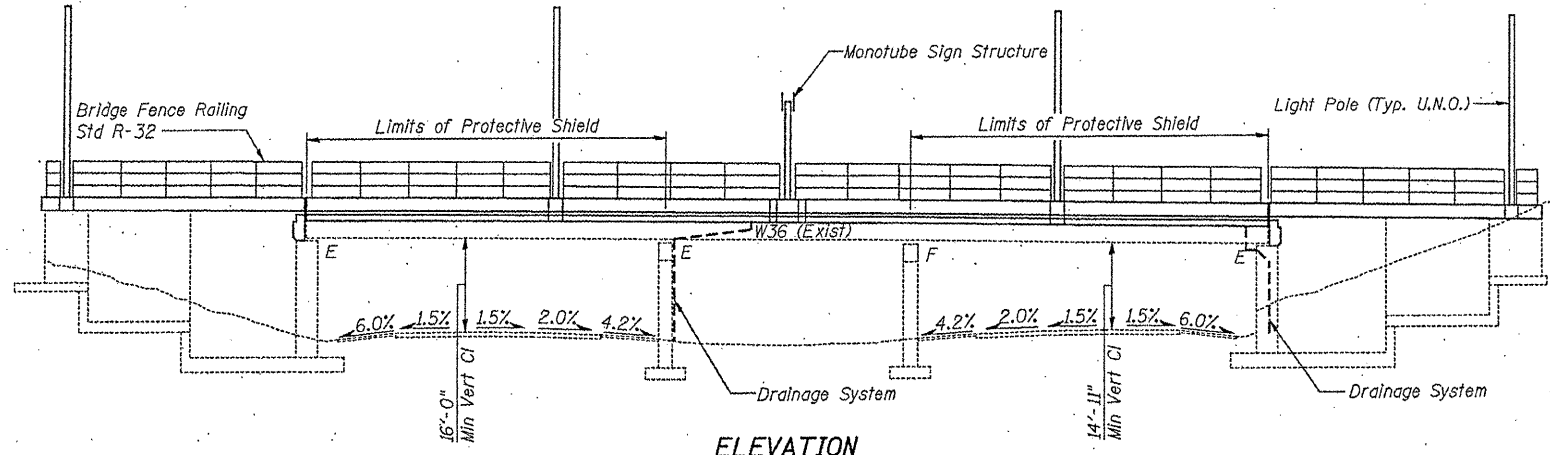
ILLINOIS DEPARTMENT OF  
TRANSPORTATION

EXISTING BRIDGE PLAN

SN 016-2030  
GENOA ST. over I-57

<b>ROUTE</b> FAI 57	<b>SECTION</b> 2010-087-BP	<b>COUNTY</b> COOK & WILL	<b>TOTAL SHEETS</b> 32	<b>SHEET NUMBER</b> 13
------------------------	-------------------------------	------------------------------	---------------------------	---------------------------

CONTRACT NO. 60L83



**FOR INFORMATION ONLY**

**ILLINOIS DEPARTMENT OF  
TRANSPORTATION**

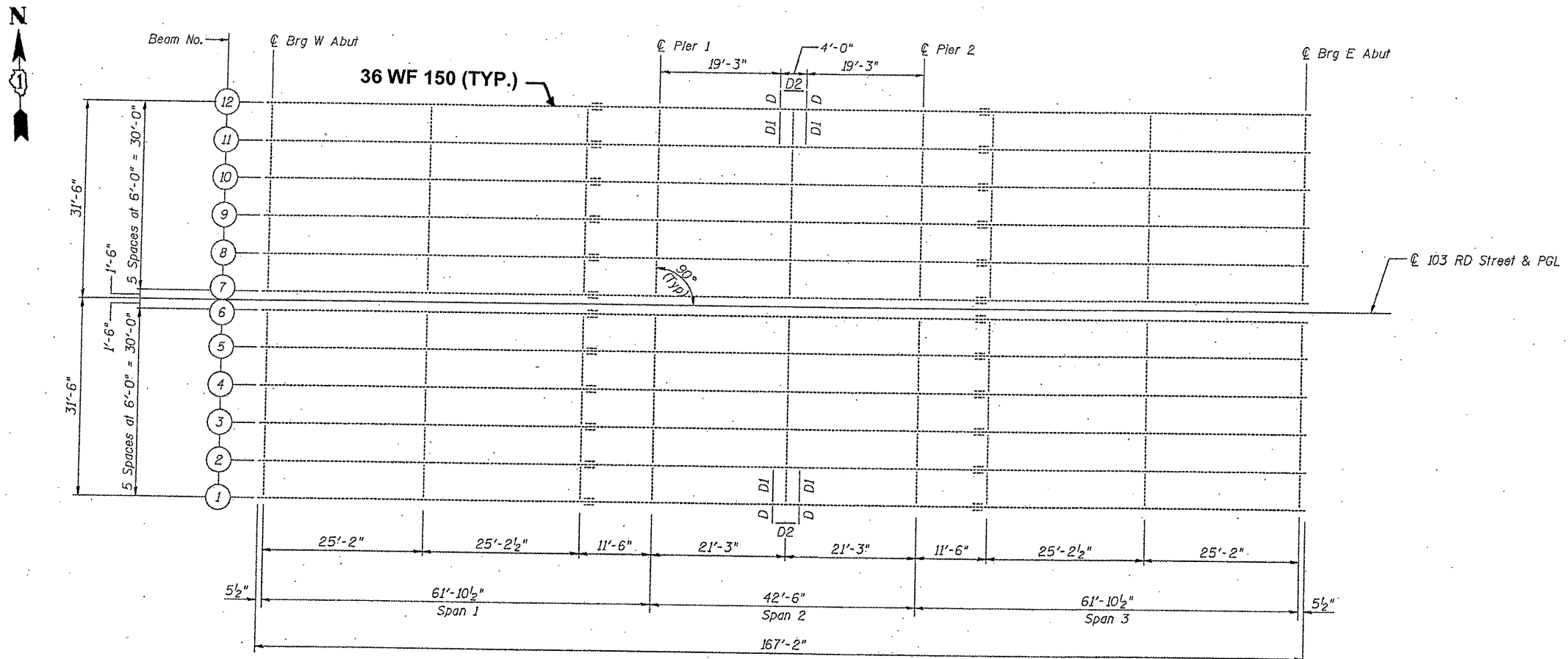
**EXISTING BRIDGE PLAN**

**SN 016-2127**  
103<sup>rd</sup> ST. over I-57

form date: 5/05/2003 s:\contracts-maintenance\wp\11x17plans\60l83 am\016-2127.doc

<b>ROUTE</b>	<b>SECTION</b>	<b>COUNTY</b>	<b>TOTAL SHEETS</b>	<b>SHEET NUMBER</b>
FAI 57	2010-087-BP	COOK & WILL	32	14

CONTRACT NO. 60L83



PLAN

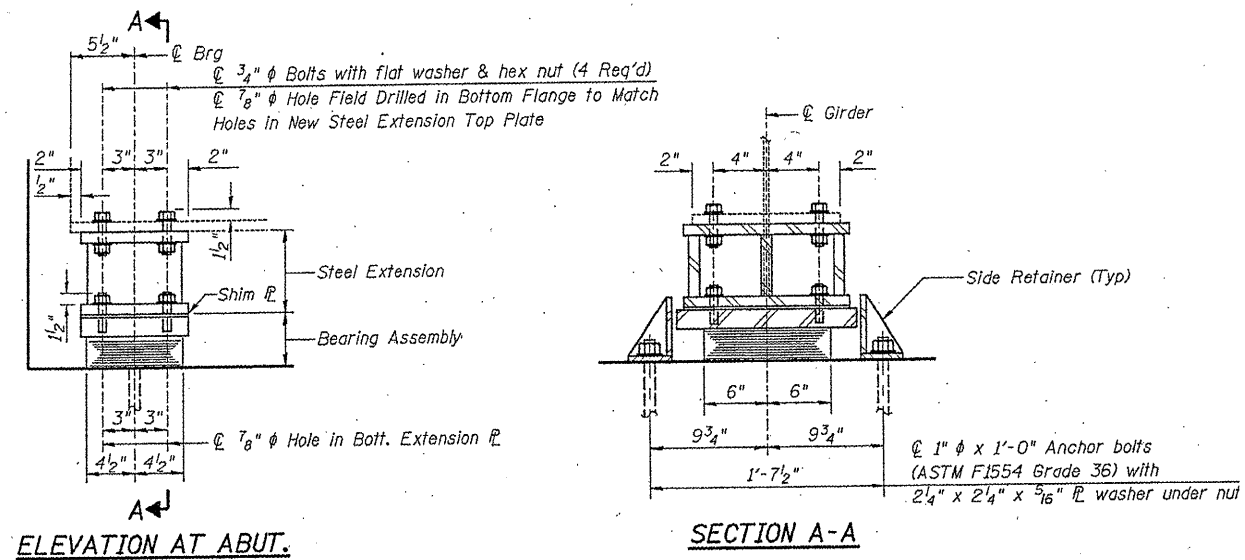
ALL DIAPHRAGMS : 16 WF 36  
 DIAPHRAGMS D<sub>2</sub> : W 16X31  
 DIAPHRAGMS D & D<sub>1</sub> : 5<sub>8</sub>" R

ILLINOIS DEPARTMENT OF  
 TRANSPORTATION  
 EXISTING BRIDGE PLAN  
 SN 016-2127  
 103<sup>rd</sup> ST. over I-57

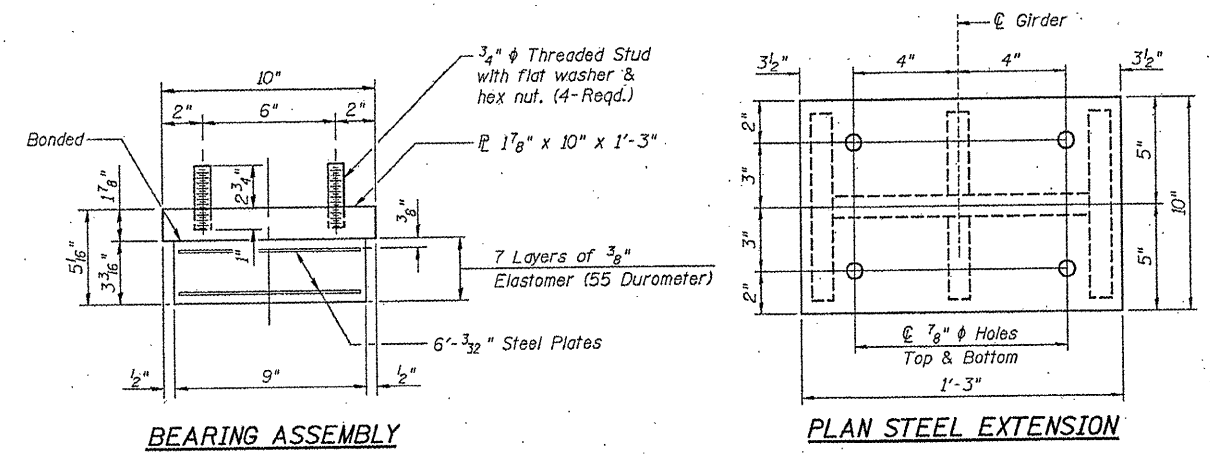
form date: 5/05/2003 s:\contracts-maintenance\wp\11x17plans\60l83 am\016-2127.doc

<b>ROUTE</b> FAI 57	<b>SECTION</b> 2010-087-BP	<b>COUNTY</b> COOK & WILL	<b>TOTAL SHEETS</b> 32	<b>SHEET NUMBER</b> 15
------------------------	-------------------------------	------------------------------	---------------------------	---------------------------

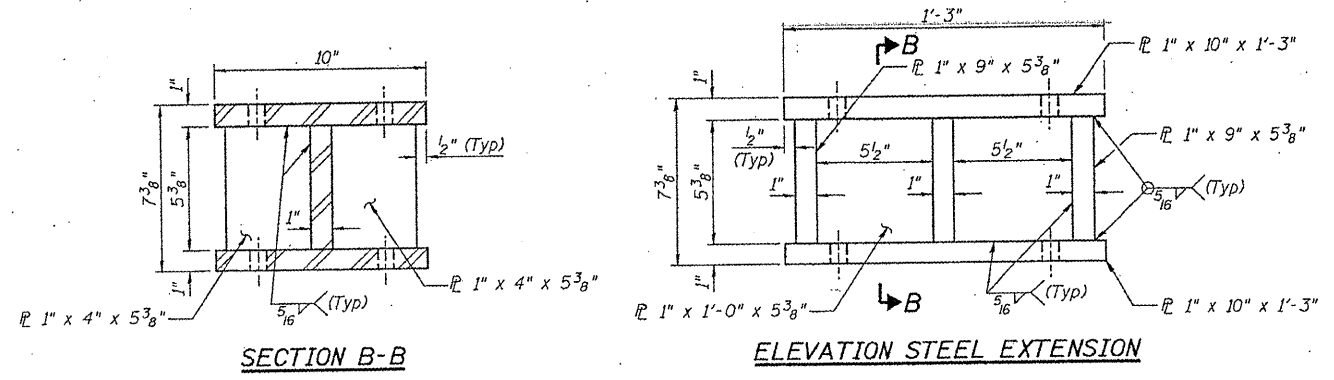
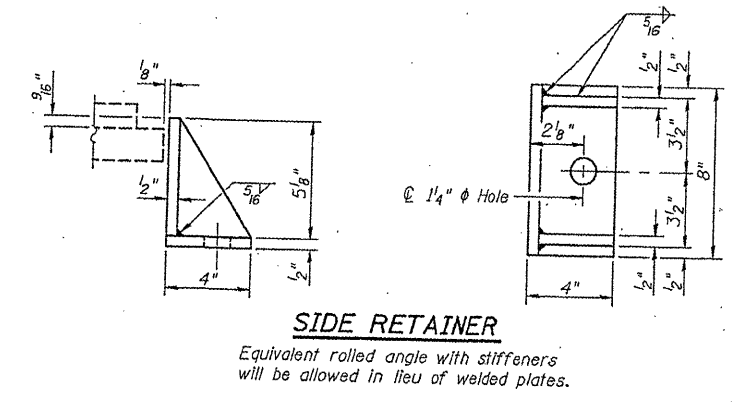
CONTRACT NO. 60L83



**TYPE I ELASTOMERIC EXP. BRG.**



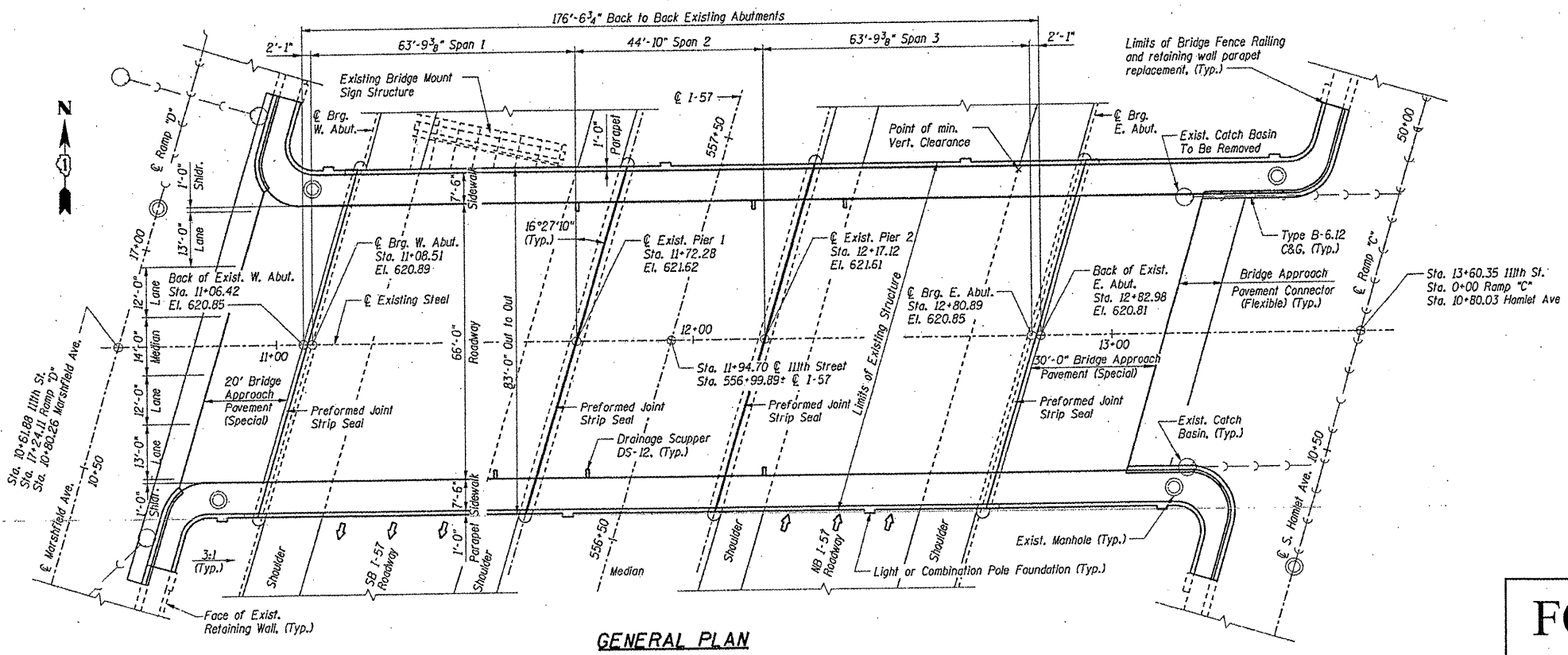
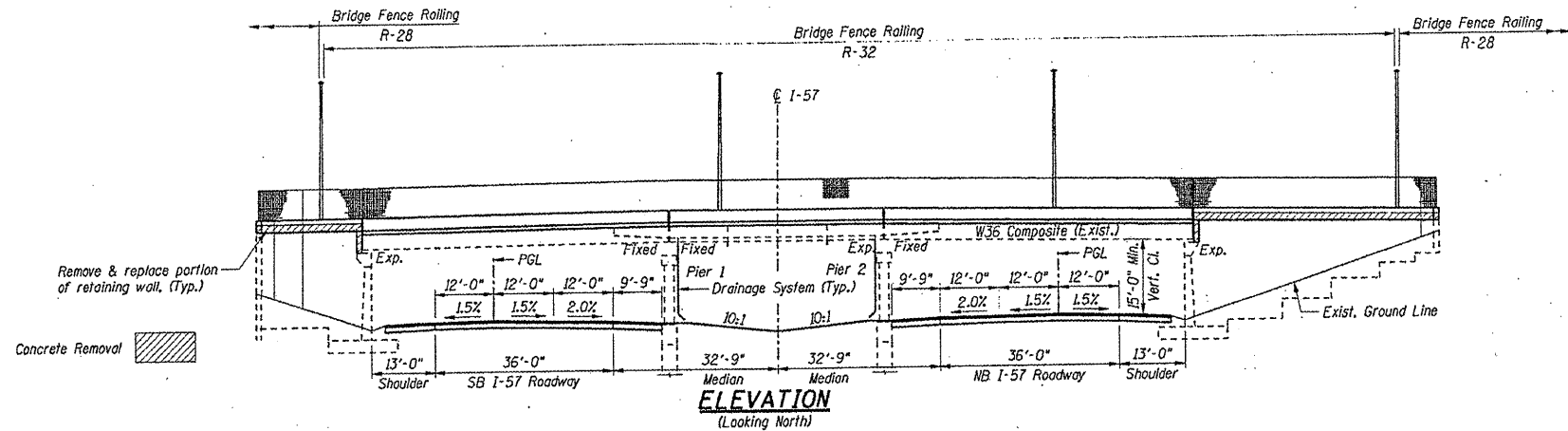
Note:  
Shim plates shall not be placed under Bearing Assembly.



**ILLINOIS DEPARTMENT OF TRANSPORTATION**  
**EXISTING BRIDGE PLAN**  
 SN 016-2127  
 103<sup>rd</sup> ST. over I-57

<b>ROUTE</b>	<b>SECTION</b>	<b>COUNTY</b>	<b>TOTAL SHEETS</b>	<b>SHEET NUMBER</b>
FAI 57	2010-087-BP	COOK & WILL	32	16

CONTRACT NO. 60L83



**FOR INFORMATION ONLY**

**ILLINOIS DEPARTMENT OF  
TRANSPORTATION**

**EXISTING BRIDGE PLAN**

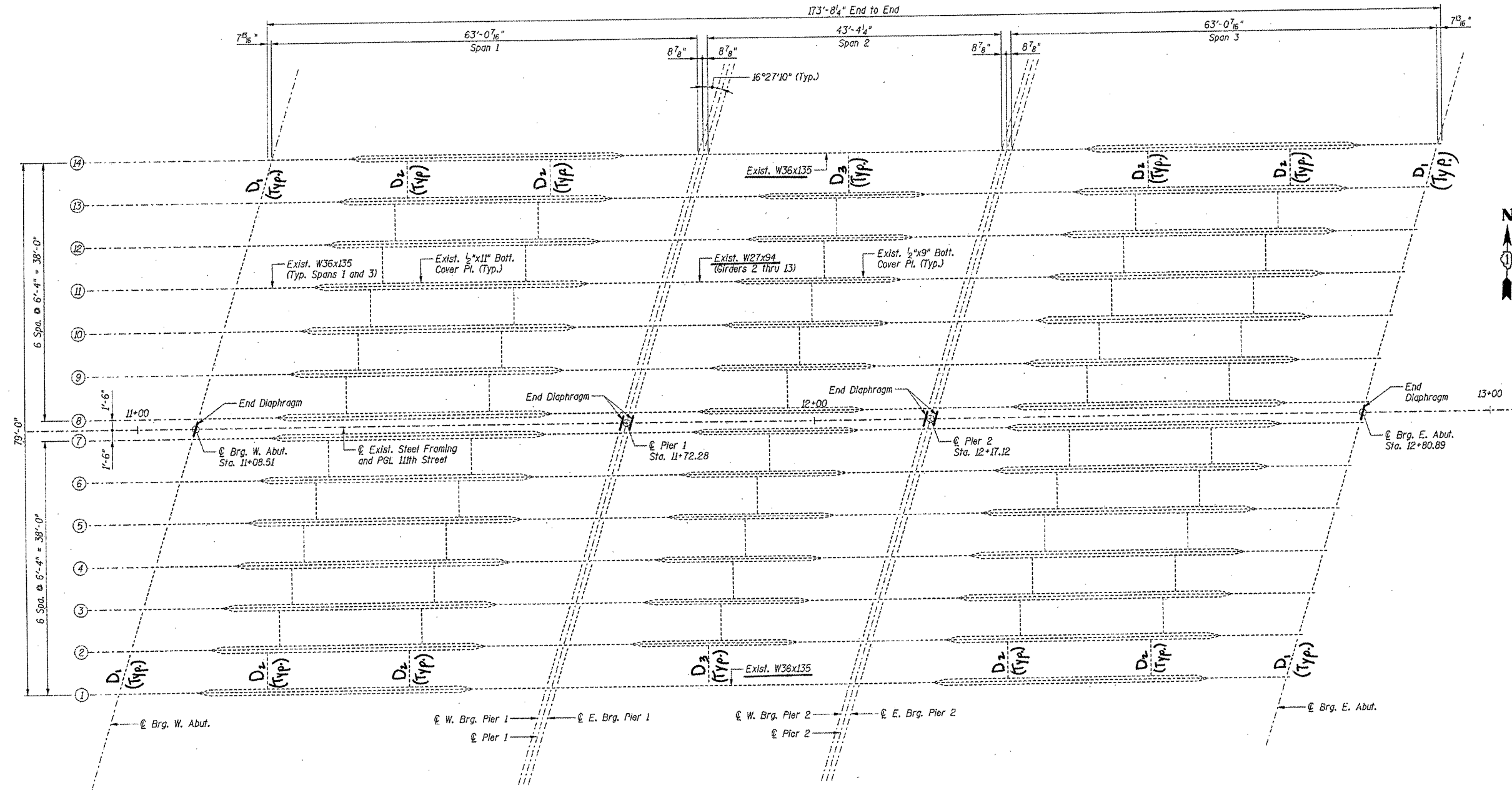
**SN 016-0989**  
111<sup>th</sup> ST. over I-57

form date: 5/05/2003 s:\contracts-maintenance\wp\11x17plans\60l83 am\016-0989.doc



<b>ROUTE</b> FAI 57	<b>SECTION</b> 2010-087-BP	<b>COUNTY</b> COOK & WILL	<b>TOTAL SHEETS</b> 32	<b>SHEET NUMBER</b> 17
------------------------	-------------------------------	------------------------------	---------------------------	---------------------------

CONTRACT NO. 60L83



**EXISTING FRAMING PLAN**  
(Existing W36 and W27 Composite Girders to Remain)

D<sub>1</sub>: 16 WF 40  
D<sub>2</sub>: 16 WF 36  
D<sub>3</sub>: 14 WF 43

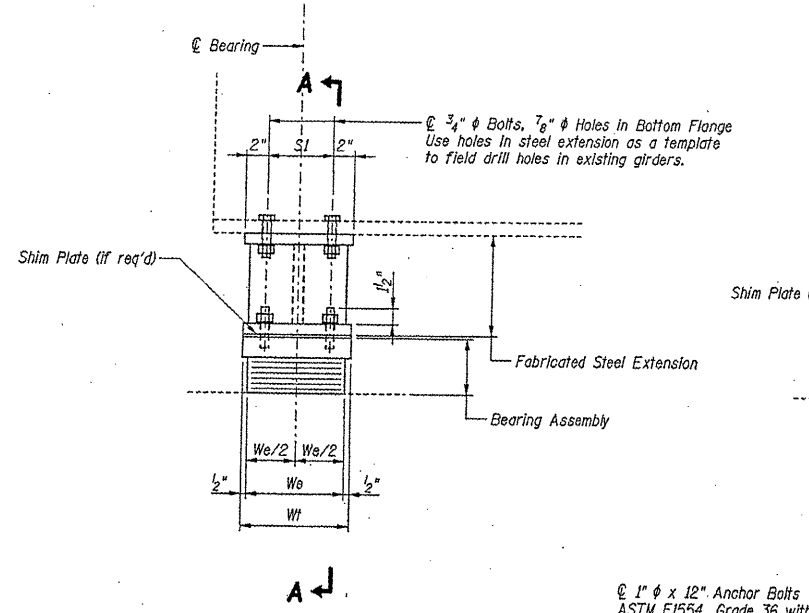
**ILLINOIS DEPARTMENT OF  
TRANSPORTATION**

**EXISTING BRIDGE PLAN**

SN 016-0989  
111<sup>th</sup> ST. over I-57

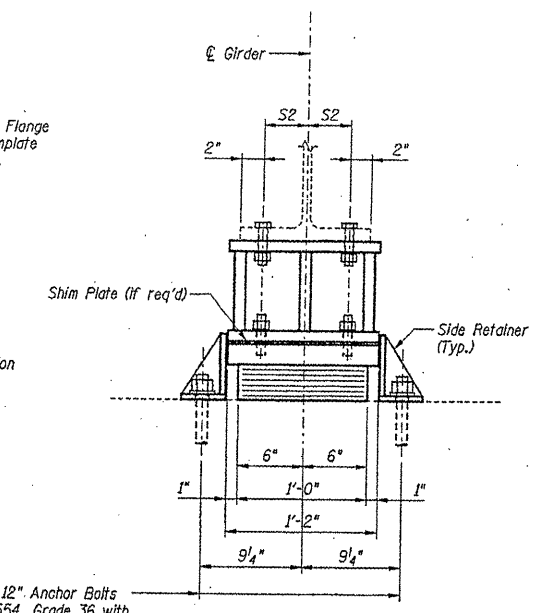
ROUTE	SECTION	COUNTY	TOTAL SHEETS	SHEET NUMBER
FAI 57	2010-087-BP	COOK & WILL	32	18

CONTRACT NO. 60L83

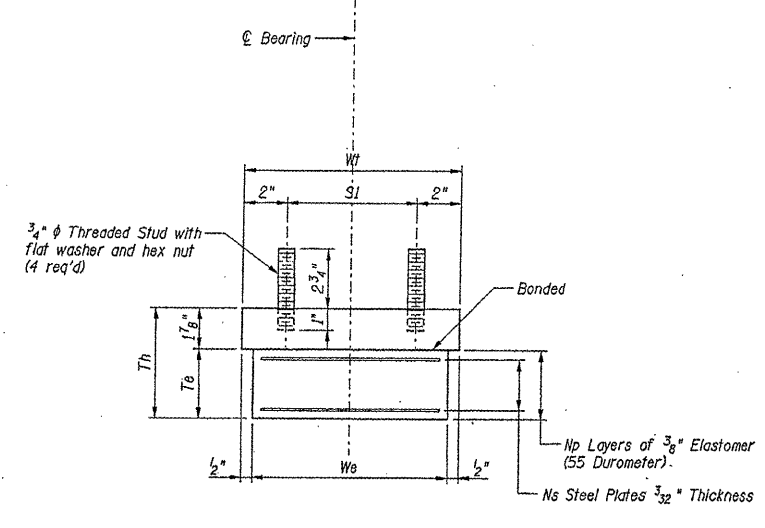


ELEVATION

1"  $\phi$  x 12" Anchor Bolts ASTM F1554, Grade 36 with 2 1/4" x 2 1/4" x 5/16" E washer under nut

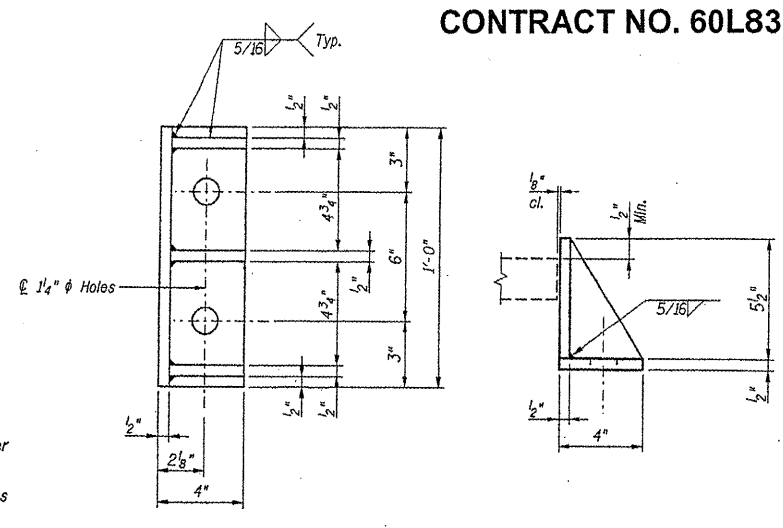


SECTION A-A



Notes: Shim Plates shall not be placed under Bearing Assembly.

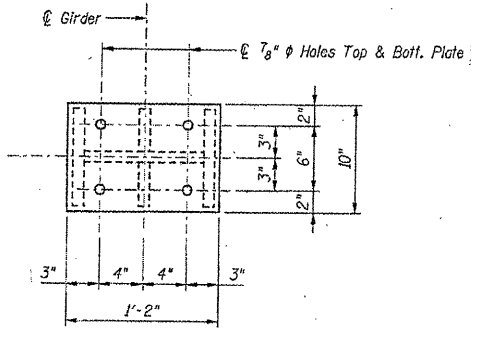
BEARING ASSEMBLY



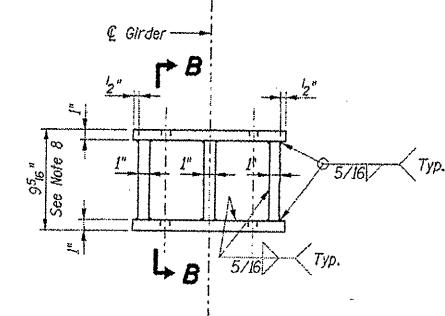
Notes: Equivalent rolled angle with stiffeners will be allowed in lieu of welded plates.

SIDE RETAINER

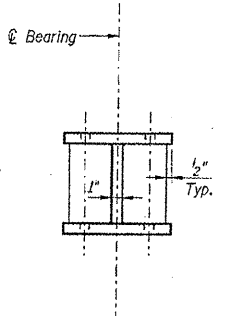
TYPE I ELASTOMERIC EXPANSION BEARING



PLAN STEEL EXTENSION



ELEVATION STEEL EXTENSION



SECTION B-B

Notes: Weight included with Furnish and Erect Structural Steel.

FABRICATED STEEL EXTENSION

ILLINOIS DEPARTMENT OF TRANSPORTATION

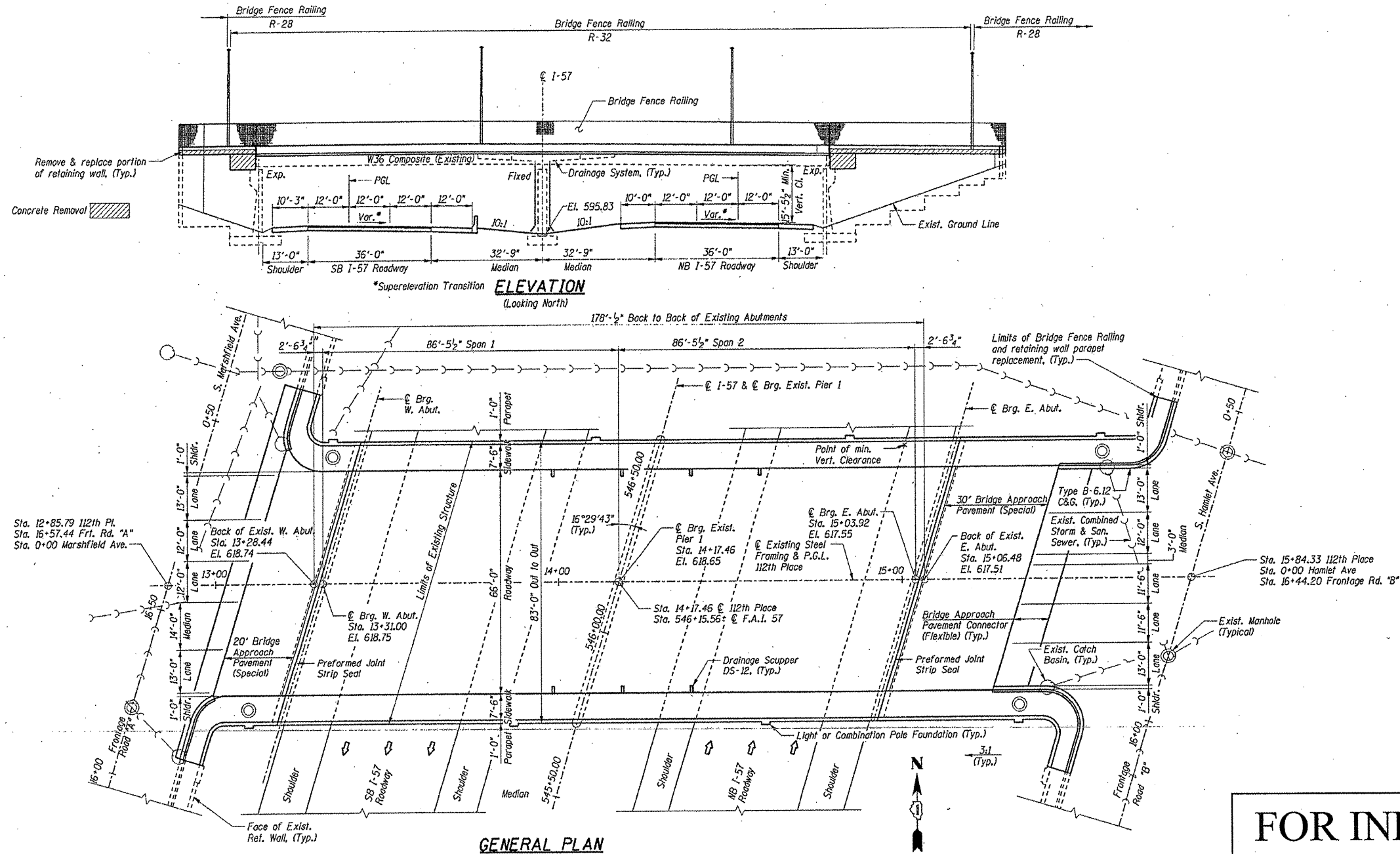
EXISTING BRIDGE PLAN

SN 016-0989  
111<sup>th</sup> ST. over I-57

form date: 5/05/2003 s:\contracts-maintenance\wp\11x17\plans\60l83 am\016-0989.doc

<b>ROUTE</b>	<b>SECTION</b>	<b>COUNTY</b>	<b>TOTAL SHEETS</b>	<b>SHEET NUMBER</b>
FAI 57	2010-087-BP	COOK & WILL	32	19

CONTRACT NO. 60L83



**FOR INFORMATION ONLY**

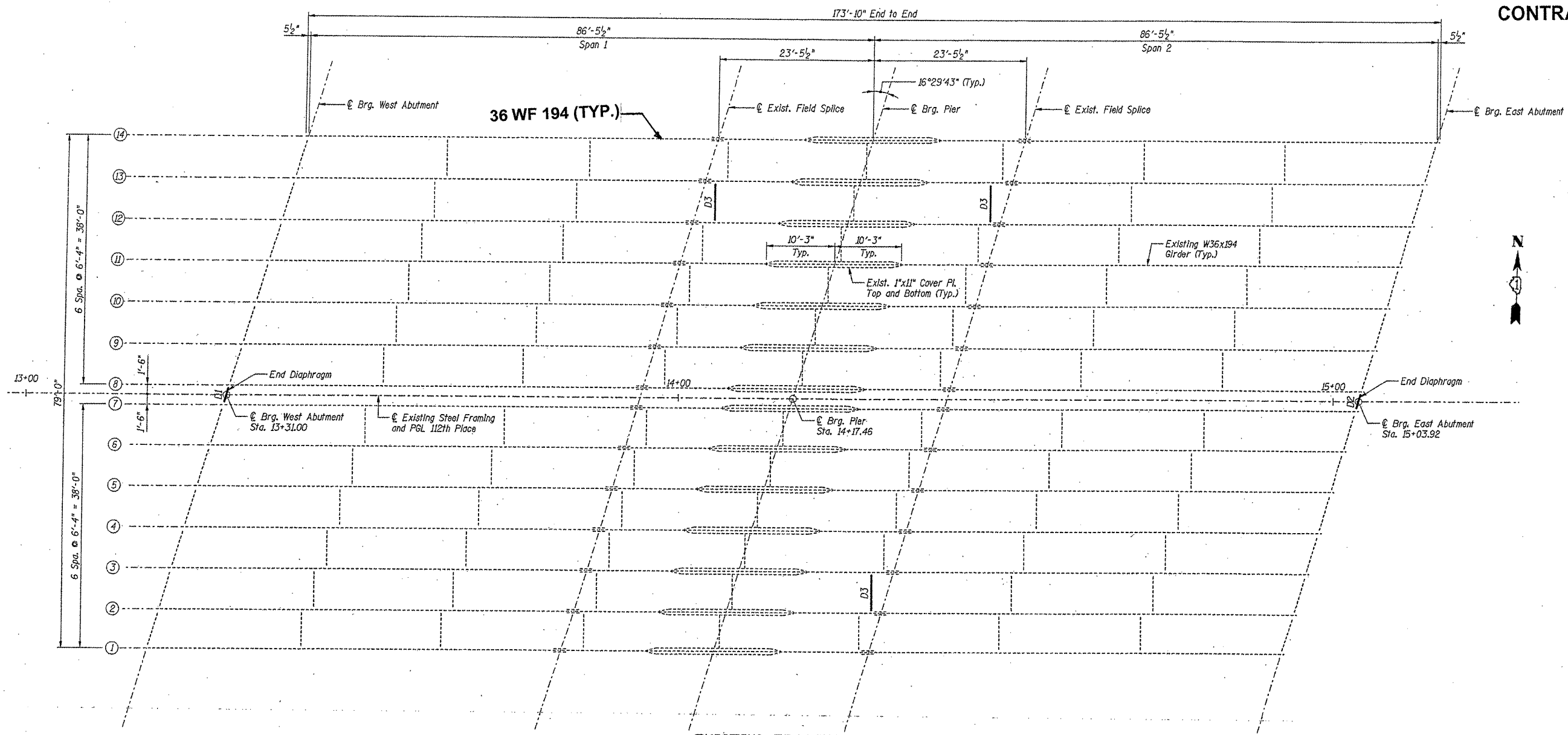
**ILLINOIS DEPARTMENT OF  
TRANSPORTATION**

**EXISTING BRIDGE PLAN**

**SN 016-0988**  
112<sup>th</sup> ST. over I-57

ROUTE FAI 57	SECTION 2010-087-BP	COUNTY COOK & WILL	TOTAL SHEETS 32	SHEET NUMBER 20
-----------------	------------------------	-----------------------	--------------------	--------------------

CONTRACT NO. 60L83



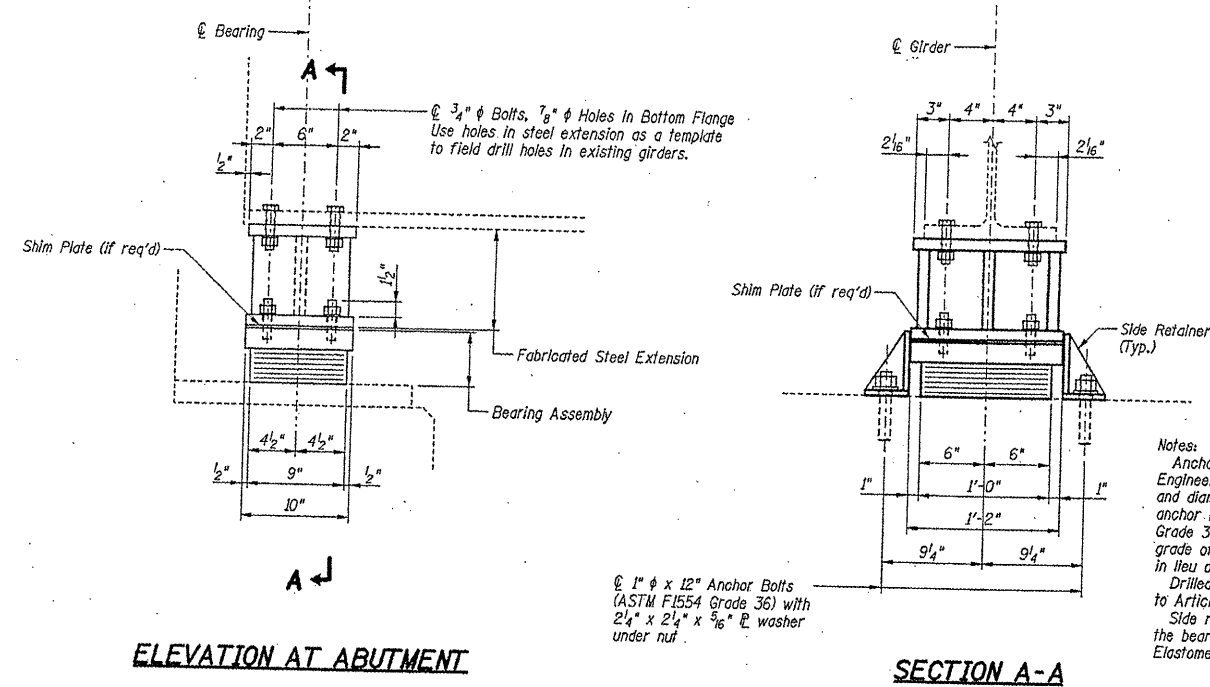
**EXISTING FRAMING PLAN**  
(Existing W36 Composite Girders to Remain)

ALL DIAPHRAGMS : 16WF 36  
DIAPHRAGMS D<sub>1</sub> & D<sub>2</sub> : 12 WF 40

ILLINOIS DEPARTMENT OF  
TRANSPORTATION  
  
EXISTING BRIDGE PLAN  
  
SN 016-0988  
112<sup>th</sup> ST. over I-57

ROUTE	SECTION	COUNTY	TOTAL SHEETS	SHEET NUMBER
FAI 57	2010-087-BP	COOK & WILL	32	21

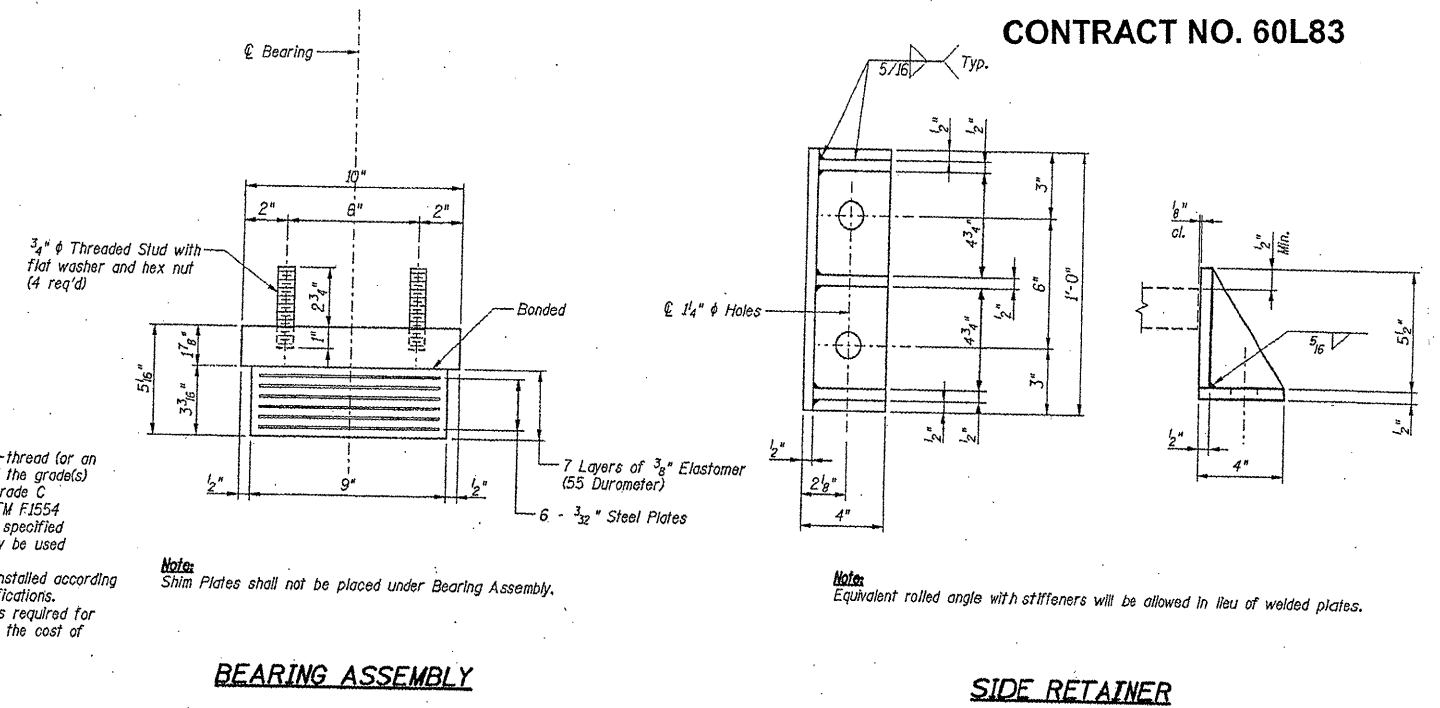
CONTRACT NO. 60L83



ELEVATION AT ABUTMENT

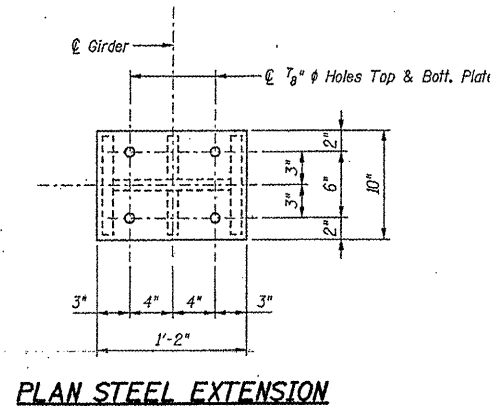
SECTION A-A

TYPE I ELASTOMERIC EXPANSION BEARING

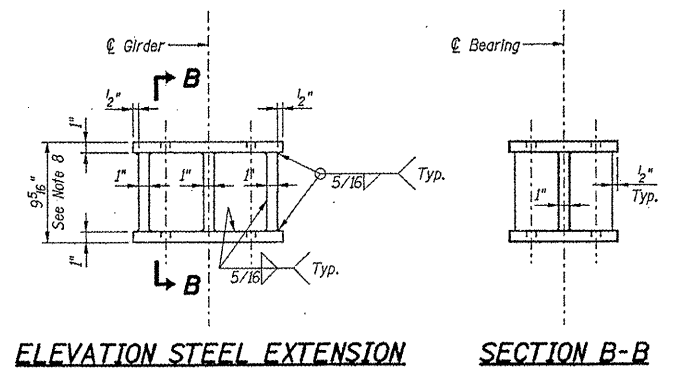


BEARING ASSEMBLY

SIDE RETAINER



PLAN STEEL EXTENSION



ELEVATION STEEL EXTENSION

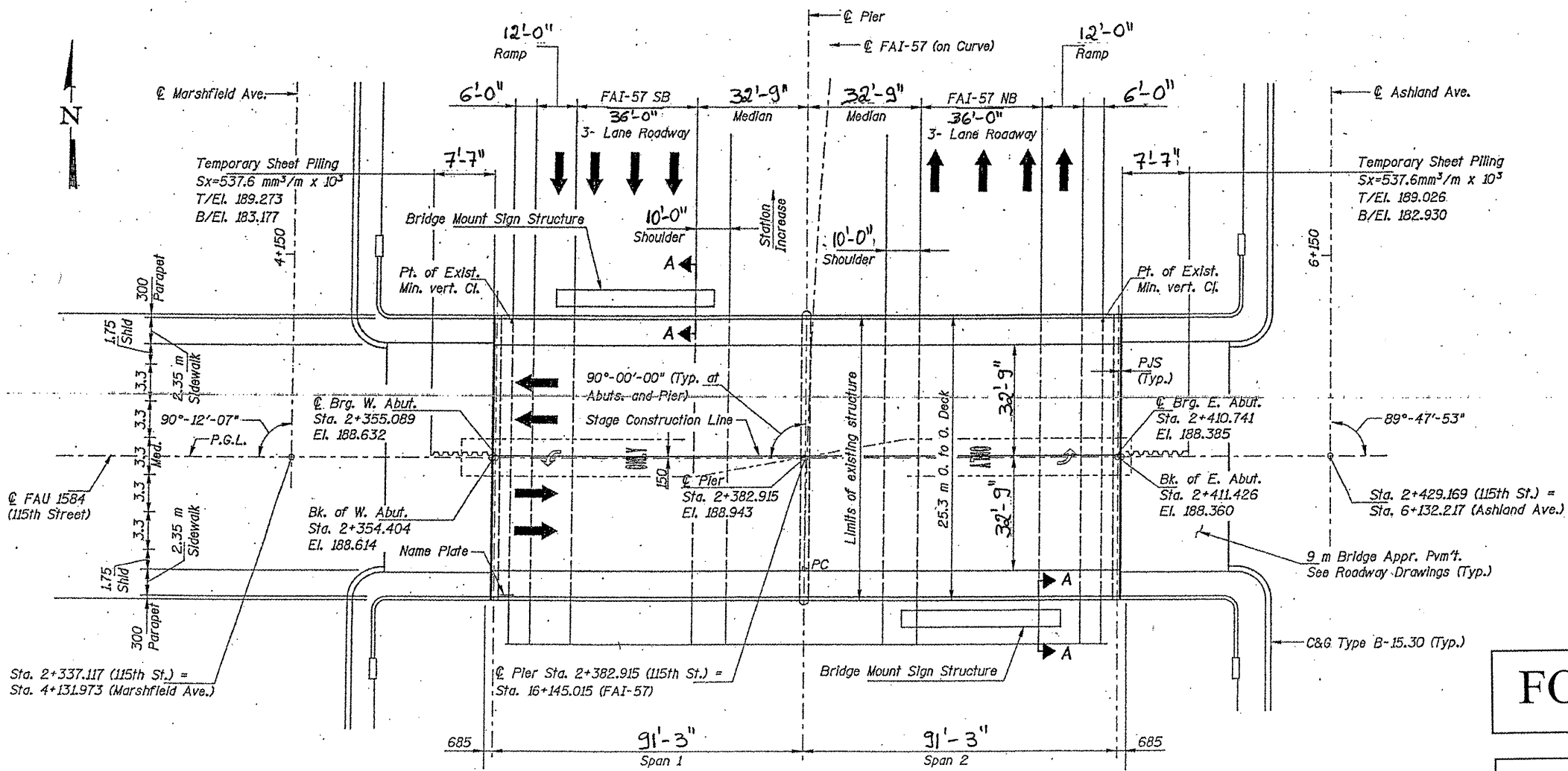
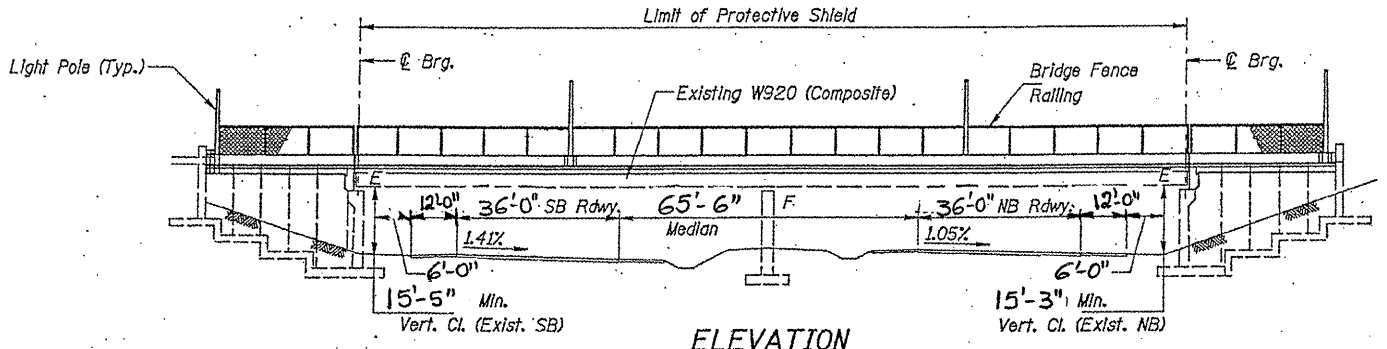
SECTION B-B

FABRICATED STEEL EXTENSION

ILLINOIS DEPARTMENT OF  
 TRANSPORTATION  
 EXISTING BRIDGE PLAN  
 SN 016-0988  
 112<sup>th</sup> ST. over I-57

ROUTE	SECTION	COUNTY	TOTAL SHEETS	SHEET NUMBER
FAI 57	2010-087-BP	COOK & WILL	32	22

CONTRACT NO. 60L83



FOR INFORMATION ONLY

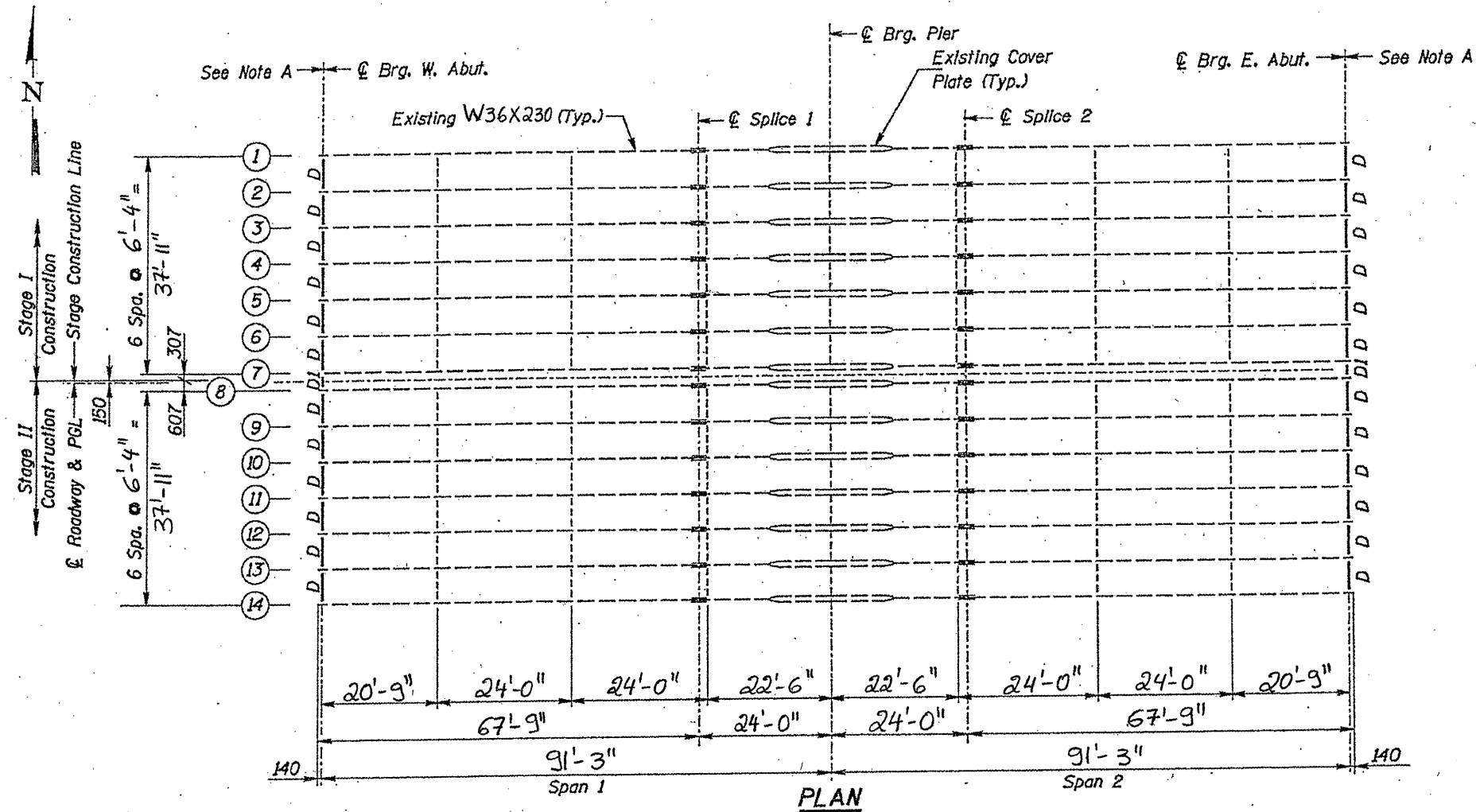
ILLINOIS DEPARTMENT OF  
TRANSPORTATION

EXISTING BRIDGE PLAN

SN 016-2037  
115<sup>th</sup> ST. over I-57

ROUTE	SECTION	COUNTY	TOTAL SHEETS	SHEET NUMBER
FAI 57	2010-087-BP	COOK & WILL	32	23

CONTRACT NO. 60L83



ALL DIAPHRAGMS : 16 WF 36  
 DIAPHRAGMS D & D<sub>1</sub> : 12 WF 40

ILLINOIS DEPARTMENT OF  
 TRANSPORTATION

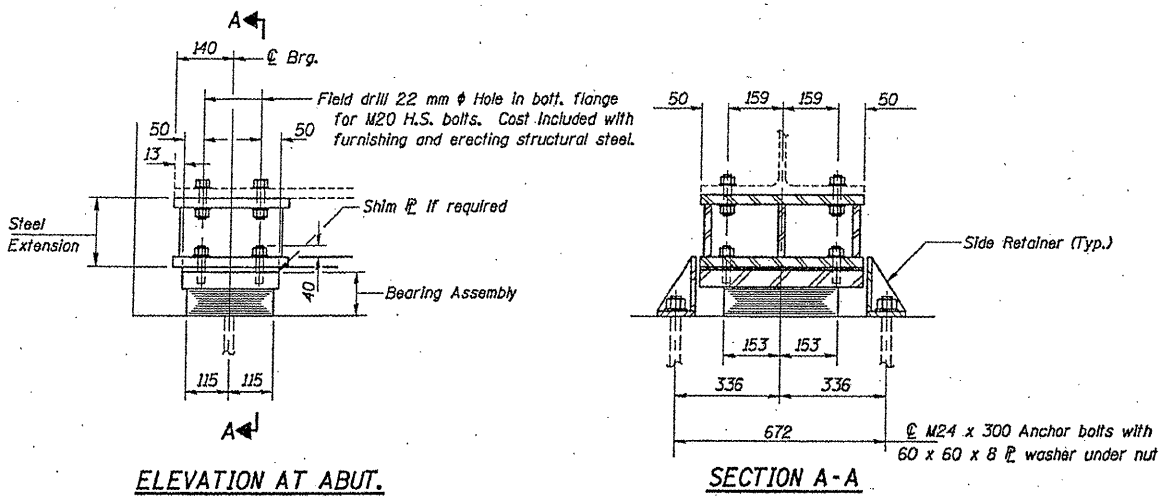
EXISTING BRIDGE PLAN

SN 016-2037  
 115<sup>th</sup> ST. over I-57

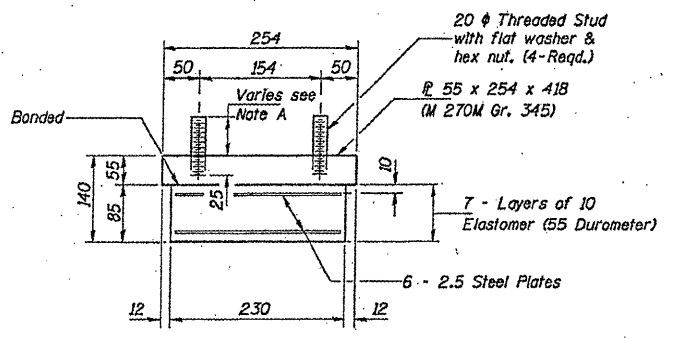
SHEET 2 OF 3

ROUTE	SECTION	COUNTY	TOTAL SHEETS	SHEET NUMBER
FAI 57	2010-087-BP	COOK & WILL	32	24

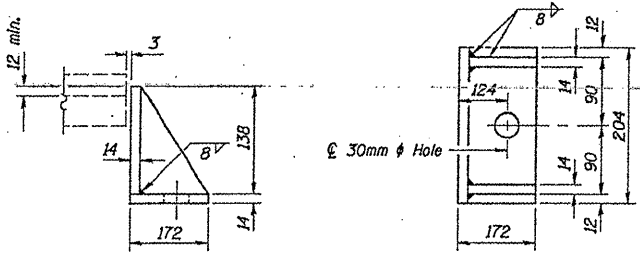
CONTRACT NO. 60L83



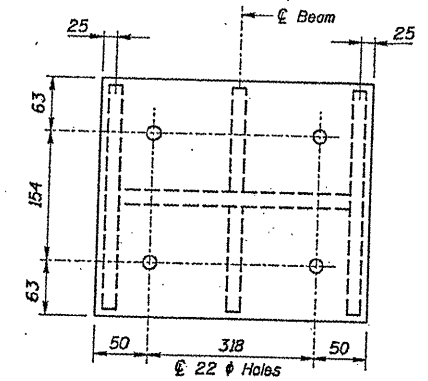
**TYPE I ELASTOMERIC EXP. BRG.**



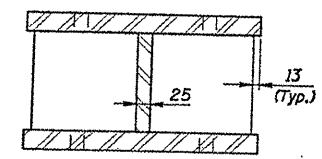
**BEARING ASSEMBLY**



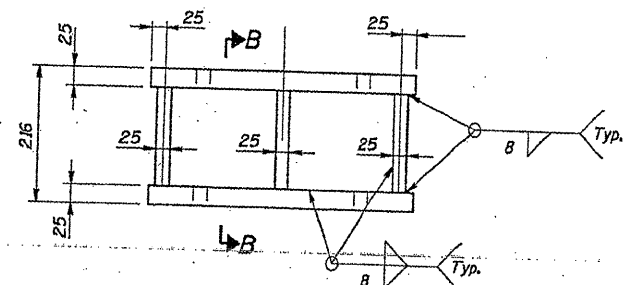
**SIDE RETAINER**



**PLAN STEEL EXTENSION**



**SECTION B-B**



**ELEVATION STEEL EXTENSION**

Note: Prior to ordering any material, the Contractor shall verify in the field all bearing height and shim thickness dimensions.

ILLINOIS DEPARTMENT OF  
TRANSPORTATION

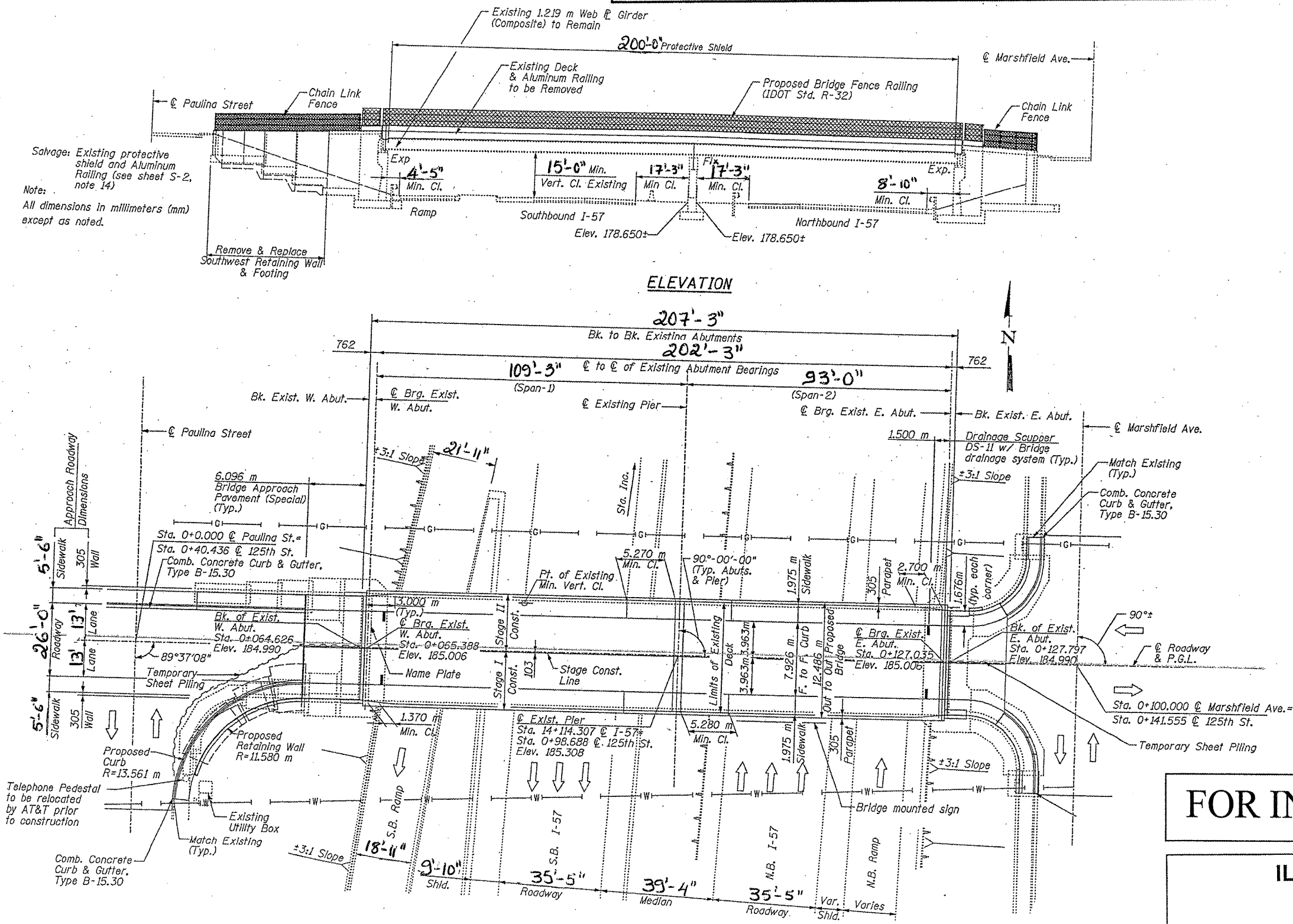
EXISTING BRIDGE PLAN

SN 016-2037  
115<sup>th</sup> ST. over I-57



ROUTE	SECTION	COUNTY	TOTAL SHEETS	SHEET NUMBER
FAI 57	2010-087-BP	COOK & WILL	32	25

CONTRACT NO. 60L83



Salvage Existing protective shield and Aluminum Railing (see sheet S-2, note 14)  
 Note:  
 All dimensions in millimeters (mm) except as noted.

ELEVATION

207'-3"  
 Bk. to Bk. Existing Abutments  
 202'-3"  
 @ to @ of Existing Abutment Bearings  
 109'-3" (Span-1)  
 93'-0" (Span-2)

PLAN

FOR INFORMATION ONLY

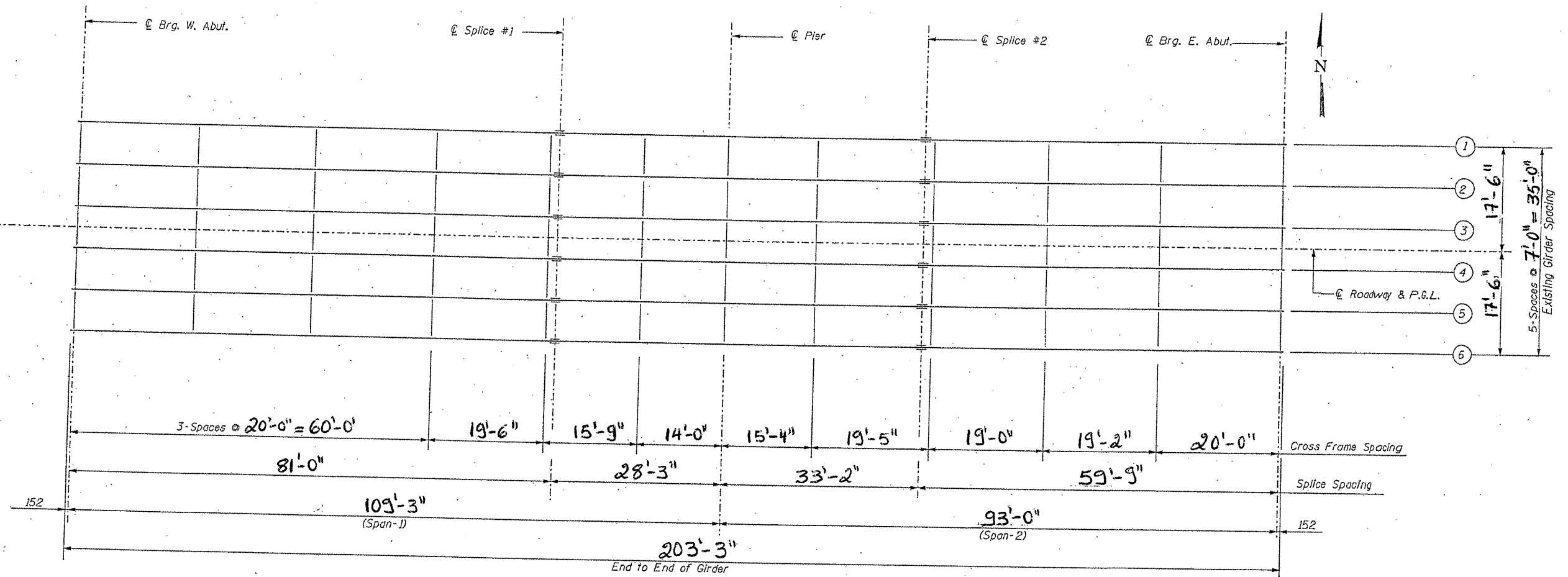
ILLINOIS DEPARTMENT OF  
 TRANSPORTATION

EXISTING BRIDGE PLAN

SN 016-2034  
 125<sup>th</sup> ST. over I-57

ROUTE	SECTION	COUNTY	TOTAL SHEETS	SHEET NUMBER
FAI 57	2010-087-BP	COOK & WILL	32	26

CONTRACT NO. 60L83



FRAMING PLAN

ALL DIAPHRAGMS: 12 WF 40

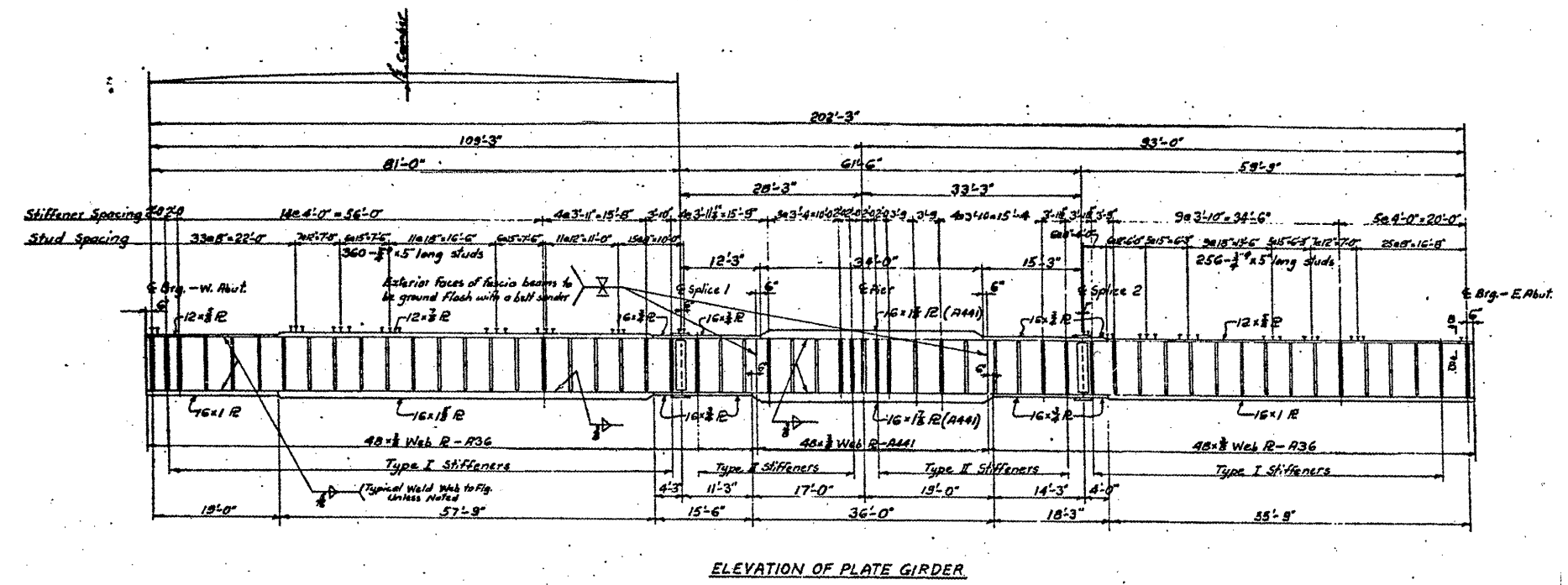
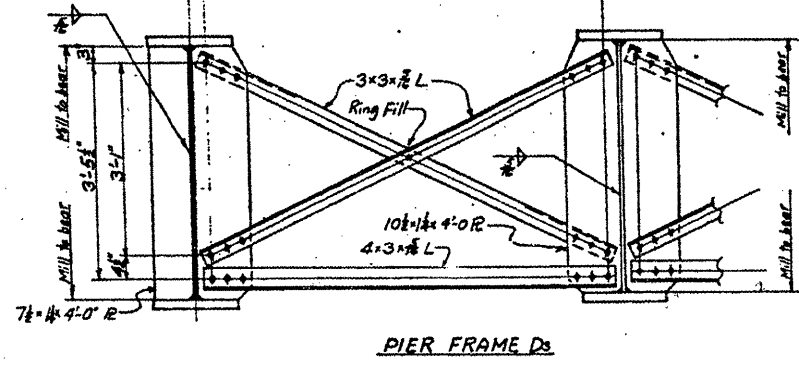
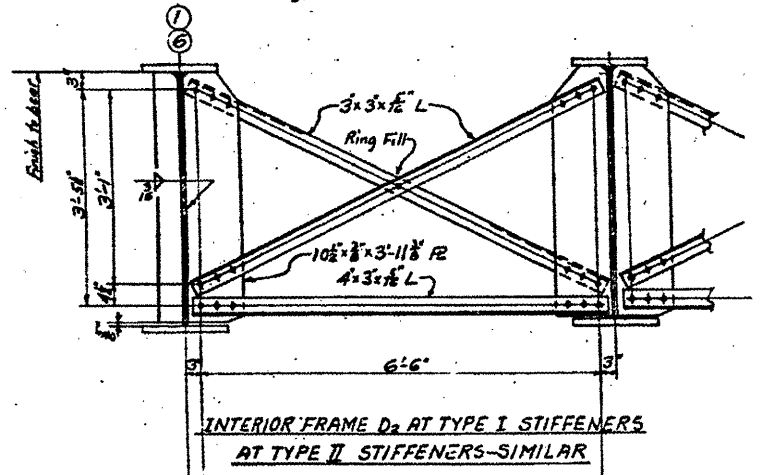
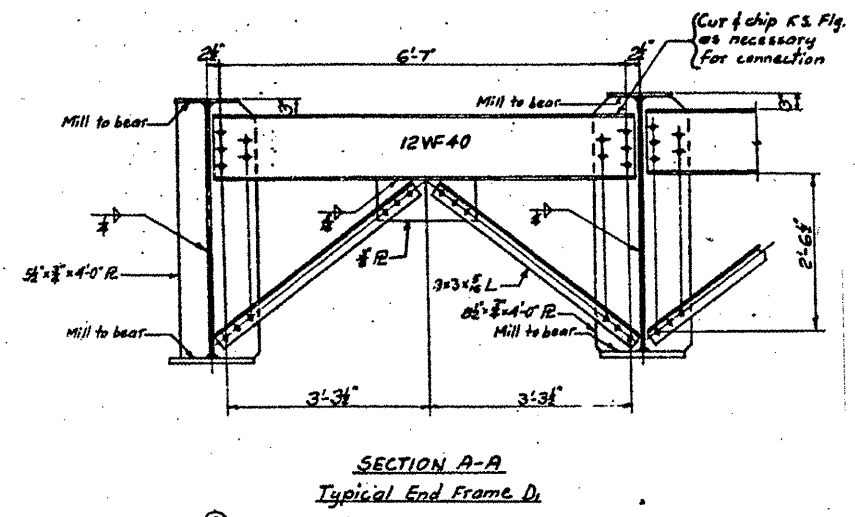
ILLINOIS DEPARTMENT OF  
TRANSPORTATION

EXISTING BRIDGE PLAN

SN 016-2034  
125<sup>th</sup> ST. over I-57

ROUTE	SECTION	COUNTY	TOTAL SHEETS	SHEET NUMBER
FAI 57	2010-087-BP	COOK & WILL	32	27

CONTRACT NO. 60L83



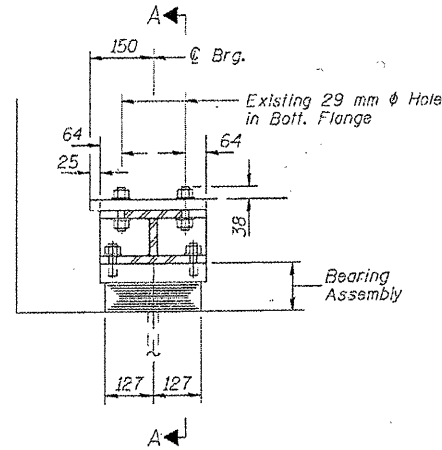
ILLINOIS DEPARTMENT OF  
TRANSPORTATION

EXISTING BRIDGE PLAN

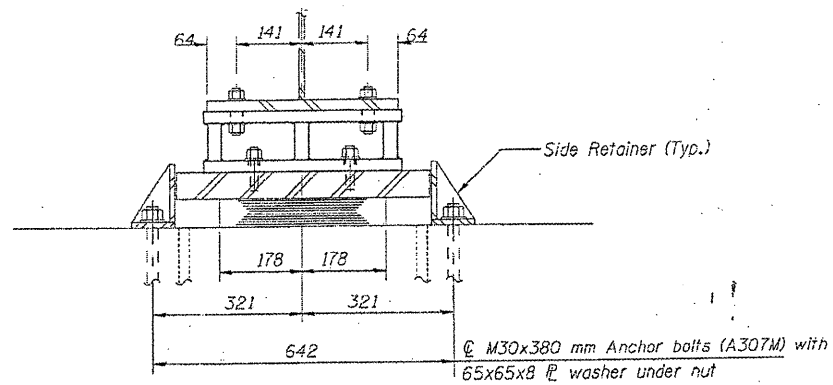
SN 016-2034  
125<sup>th</sup> ST. over I-57

ROUTE	SECTION	COUNTY	TOTAL SHEETS	SHEET NUMBER
FAI 57	2010-087-BP	COOK & WILL	32	28

CONTRACT NO. 60L83

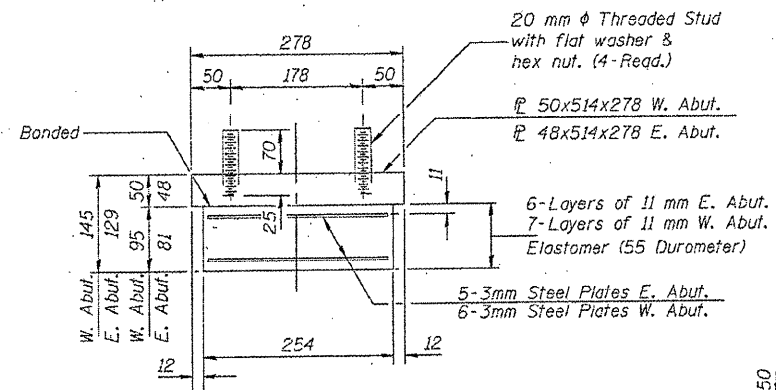


ELEVATION AT ABUT.



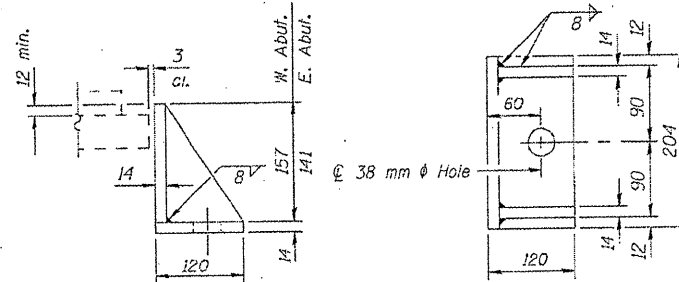
SECTION A-A

TYPE I ELASTOMERIC EXP. BRG.



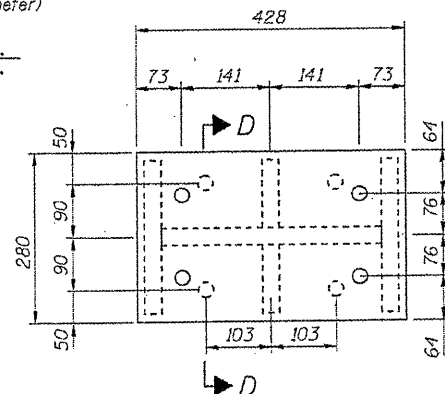
BEARING ASSEMBLY

Note: Shim plates shall not be placed under Bearing Assembly.

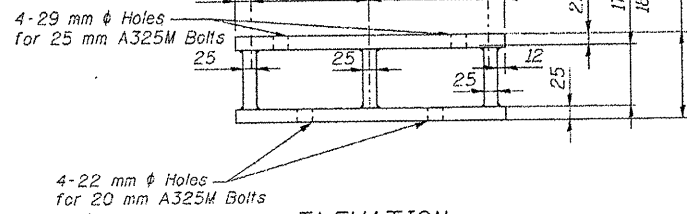


SIDE RETAINER

Equivalent rolled angle with stiffeners will be allowed in lieu of welded plates.

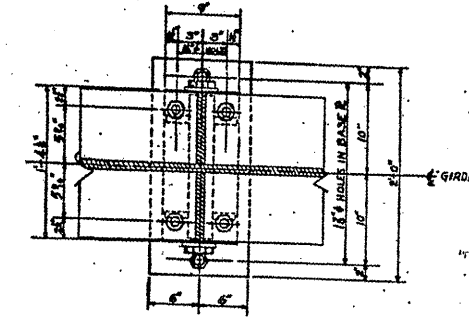


PLAN

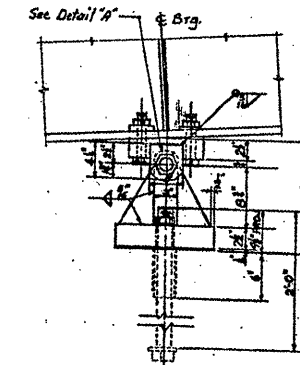


ELEVATION

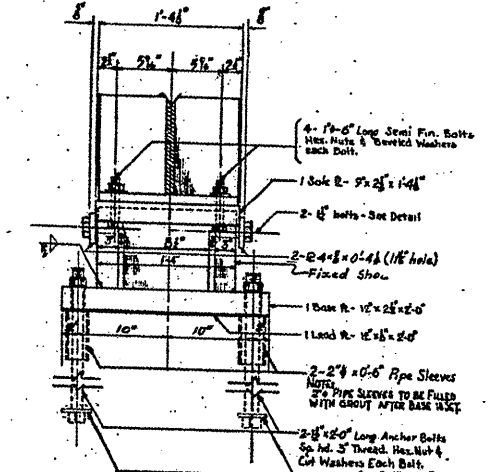
EXPANSION STEEL EXTENSION AT ABUTMENTS



PLAN

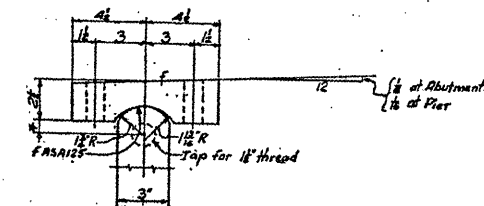


ELEVATION

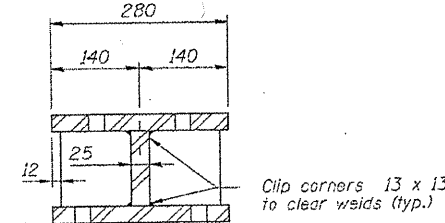


ELEVATION

FIXED BEARING FOR PIER  
6 REQ'd



DETAIL "A"  
Scale: 3/4"=1'-0"



SECTION D-D

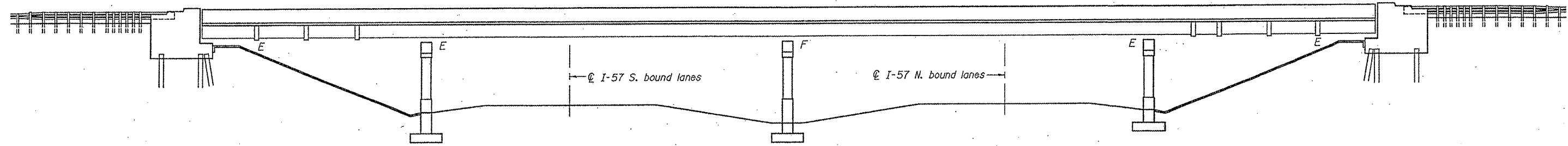
ILLINOIS DEPARTMENT OF TRANSPORTATION

EXISTING BRIDGE PLAN

SN 016-2034  
125<sup>th</sup> ST. over I-57

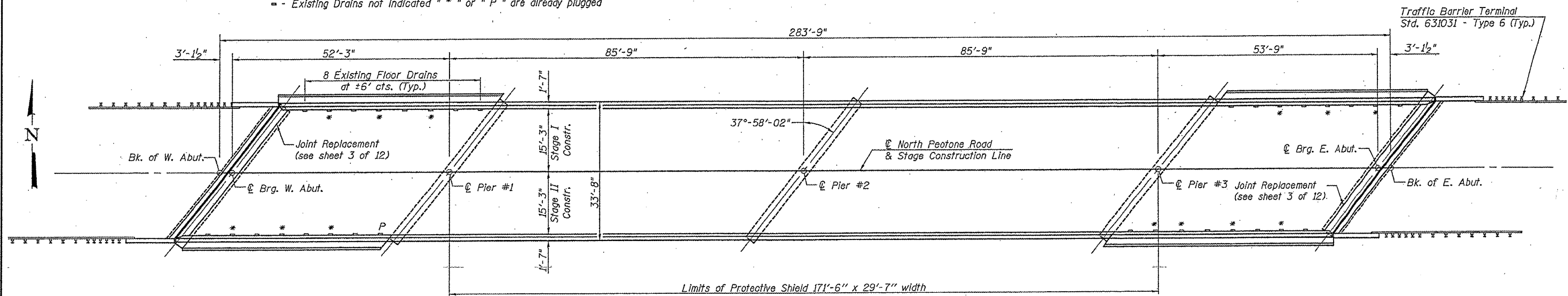
ROUTE	SECTION	COUNTY	TOTAL SHEETS	SHEET NUMBER
FAI 57	2010-087-BP	COOK & WILL	32	29

CONTRACT NO. 60L83



**ELEVATION**

- \* - Provide Floor Drain Extension (See Sheet 8 of 12 for Details)
- P - Plug Existing Deck Drain (See Sheet 8 of 12 for Details)
- Existing Drains not Indicated "\*" or "P" are already plugged



**PLAN**

**FOR INFORMATION ONLY**

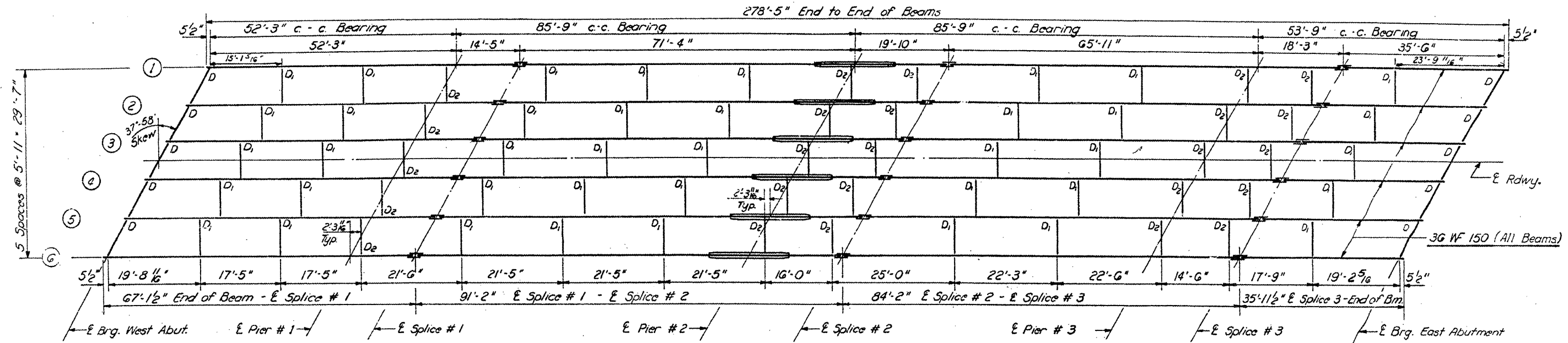
**ILLINOIS DEPARTMENT OF  
TRANSPORTATION**

**EXISTING BRIDGE PLAN**

**SN 099-0162  
N. PEOTONE RD. over I-57**

ROUTE	SECTION	COUNTY	TOTAL SHEETS	SHEET NUMBER
FAI 57	2010-087-BP	COOK & WILL	32	30

CONTRACT NO. 60L83

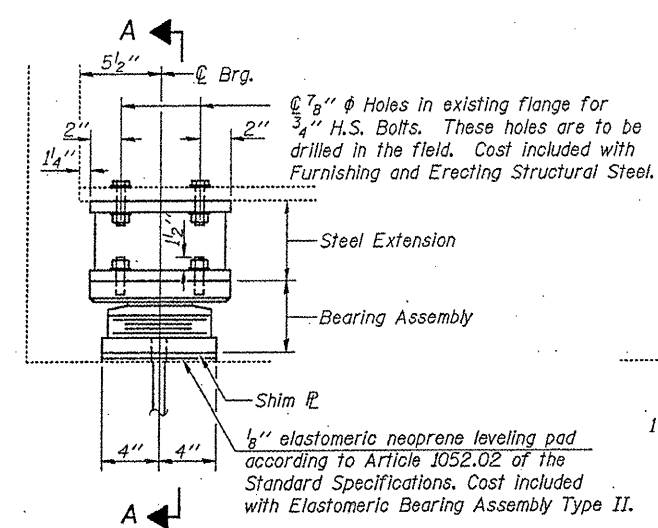


DIAPHRAGMS D<sub>1</sub> & D<sub>2</sub>: 16 WF 36  
 DIAPHRAGMS D : 12 WF 40

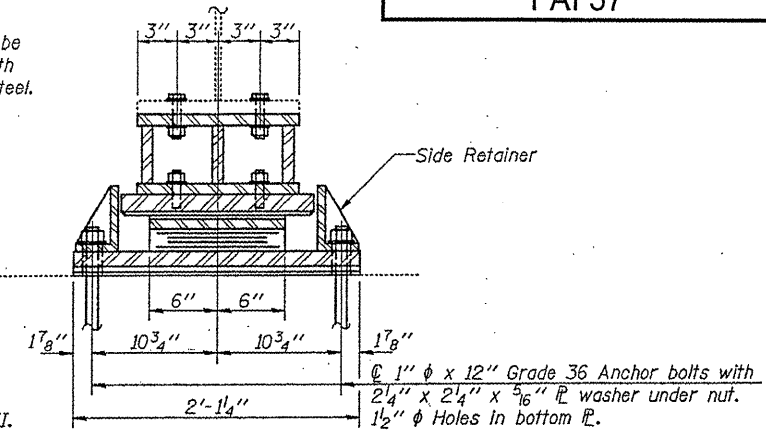
ILLINOIS DEPARTMENT OF  
 TRANSPORTATION  
 EXISTING BRIDGE PLAN  
 SN 099-0162  
 PEOTONE RD. over I-57

<b>ROUTE</b> FAI 57	<b>SECTION</b> 2010-087-BP	<b>COUNTY</b> COOK & WILL	<b>TOTAL SHEETS</b> 32	<b>SHEET NUMBER</b> 31
------------------------	-------------------------------	------------------------------	---------------------------	---------------------------

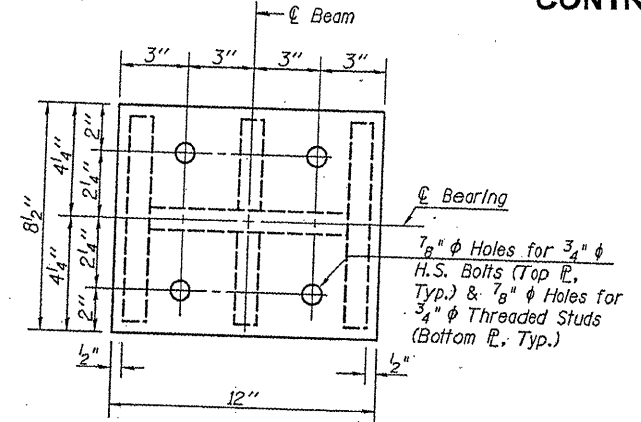
CONTRACT NO. 60L83



ELEVATION AT ABUT.

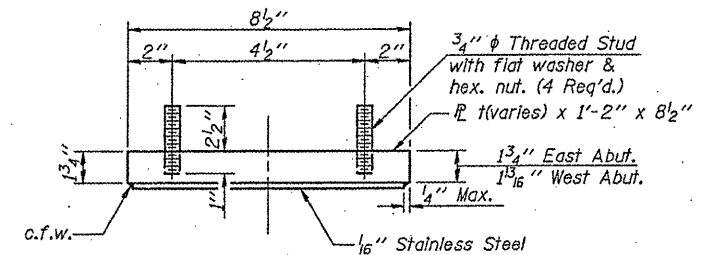


SECTION A-A

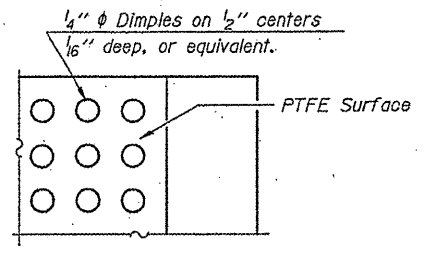


STEEL EXTENSION PLAN

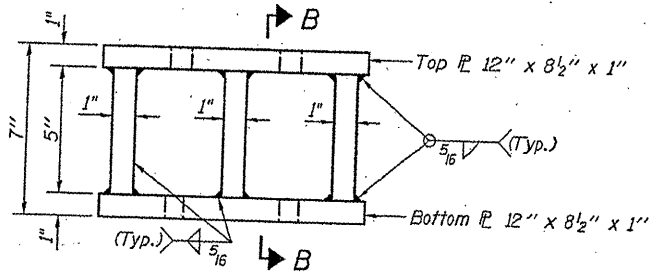
**TYPE II ELASTOMERIC EXP. BRG.**



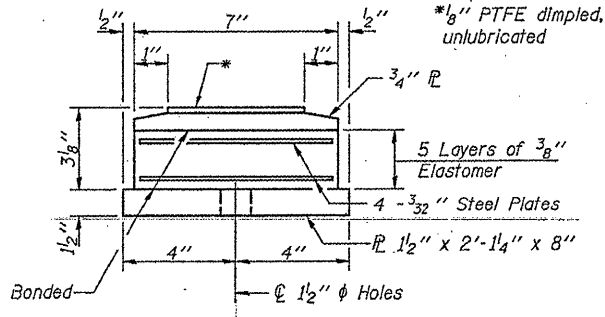
TOP BEARING ASSEMBLY



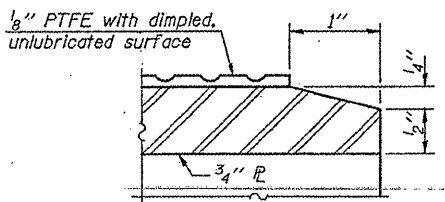
PLAN-PTFE SURFACE



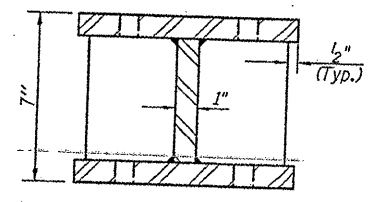
STEEL EXTENSION ELEVATION



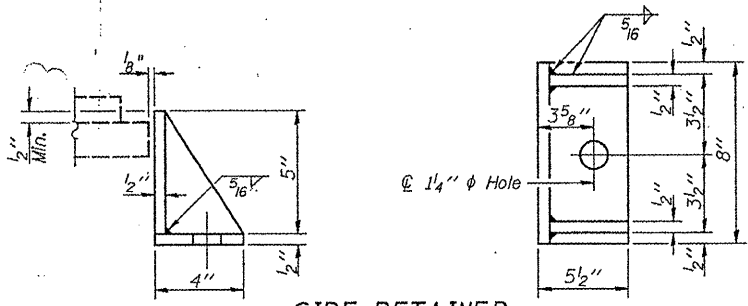
BOTTOM BEARING ASSEMBLY



SECTION THRU PTFE

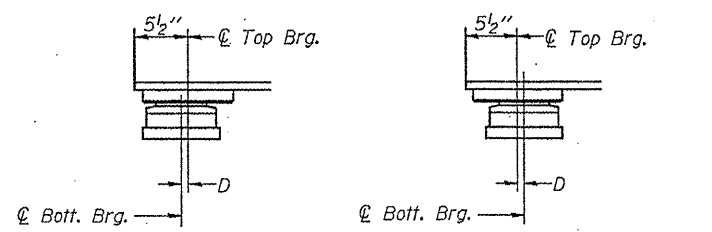


SECTION B-B



SIDE RETAINER

Equivalent rolled angle with stiffeners will be allowed in lieu of welded plates.

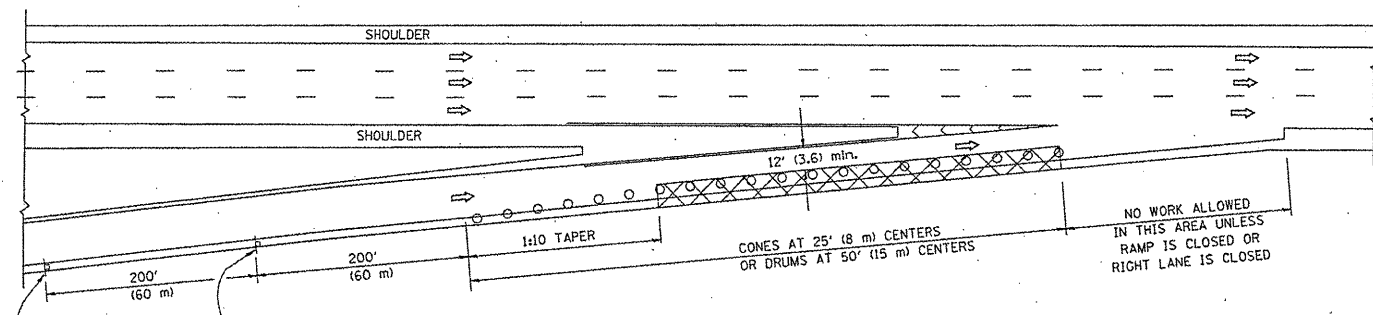


**SETTING ANCHOR BOLTS AT EXP. BRG.**

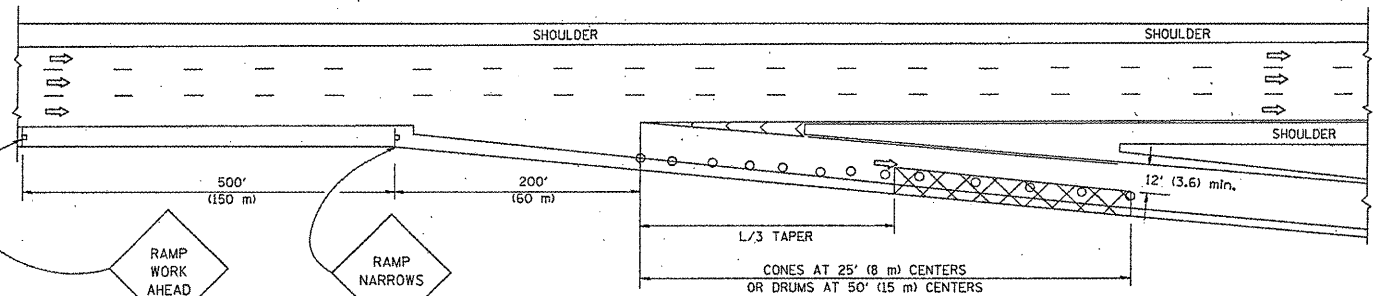
D = 1/8" per each 100' of expansion for every 15° temp. change from the normal temp. of 50°F.

**ILLINOIS DEPARTMENT OF TRANSPORTATION**  
**EXISTING BRIDGE PLAN**  
**SN 099-0162**  
**N. PEOTONE RD. over I-57**

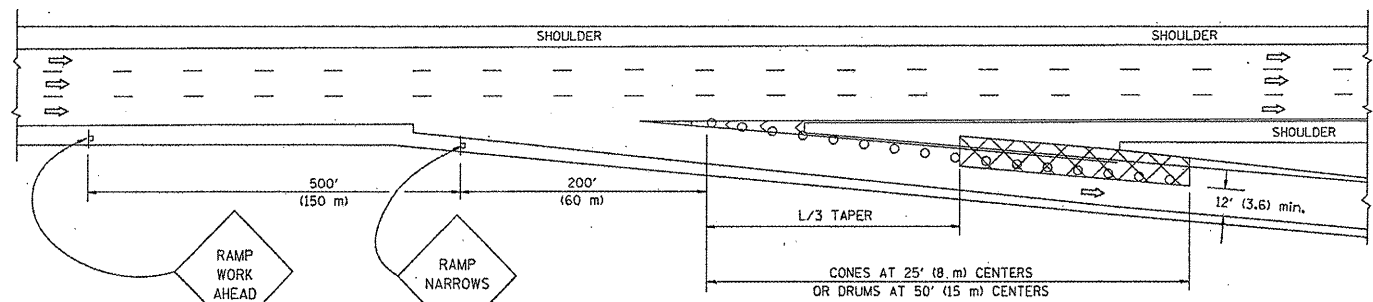
PARTIAL RAMP CLOSURE DETAILS



TYPICAL ENTRANCE RAMP



TYPICAL EXIT RAMP



TYPICAL EXIT RAMP

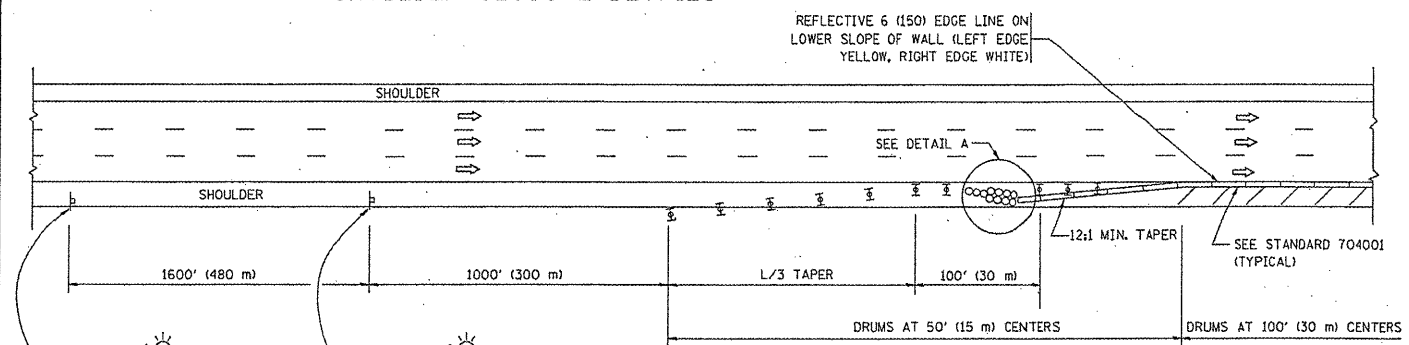
SYMBOLS

- ACTIVE WORK AREA
- SIGN ON PORTABLE OR PERMANENT SUPPORT
- FLAGGER WITH CONTROL SIGN
- TYPE II BARRICADE, DRUM OR VERTICAL BARRICADE WITH STEADY BURN MONO-DIRECTIONAL LIGHT
- CONE, DRUM OR BARRICADE

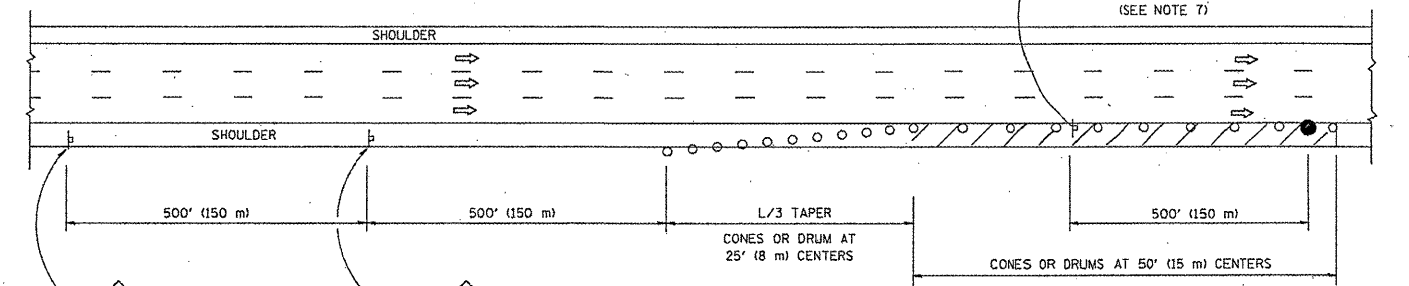
GENERAL NOTES

1. THE "L" DISTANCE EQUALS:  
SPEED LIMIT FORMULAS  
45 mph (80 km/h) METRIC ENGLISH  
OR GREATER: L=0.65(W/S) L=(W/S)
- W = WIDTH OF OFFSET IN FEET (METERS)  
S = NORMAL POSTED SPEED MPH (KM/H)
2. PLASTIC DRUMS WITH HIGH PERFORMANCE REFLECTIVE SHEETING AND STEADY BURNING LIGHTS ARE REQUIRED FOR ALL NIGHTTIME CLOSURES.
3. ALL SIGNS SHALL BE POST MOUNTED IF THE CLOSURE TIME EXCEEDS FOUR DAYS.
4. FLASHING LIGHTS SHALL BE USED DURING THE HOURS OF DARKNESS AND SHALL BE INSTALLED ABOVE THE FIRST TWO SETS OF SIGNS.

SHOULDER CLOSURE DETAILS



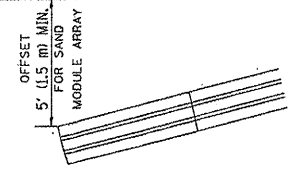
PERMANENT SHOULDER CLOSURE



DAYTIME SHOULDER CLOSURE

THIS DETAIL IS USED WHERE:  
1. VEHICLES, EQUIPMENT, WORKERS OR THEIR ACTIVITIES ENCR OACH IN AN AREA CLOSER THAN 15' (4.5 m) TO THE EDGE OF PAVEMENT FOR A PERIOD IN EXCESS OF 15 MINUTES.

ARRAY DESIGN PER MANUFACTURER TO BE NCHRP 350 COMPLIANT.



DETAIL "A"  
IMPACT ATTENUATOR, TEMPORARY (SEE NOTE 5)

ALL DIMENSIONS ARE IN INCHES (MILLIMETERS) UNLESS OTHERWISE SHOWN.

FILE NAME = W:\diststd\22x34\vol17.dgn	USER NAME = leysa	DESIGNED -	REVISED - 04-03
		DRAWN - D.W.S.	REVISED - J.A.F. 12-06
		CHECKED -	REVISED - S.P.B. 01-07
		DATE - 11-96	REVISED - S.P.B. 12-09

STATE OF ILLINOIS  
DEPARTMENT OF TRANSPORTATION

TRAFFIC CONTROL DETAILS FOR FREEWAY SHOULDER CLOSURES AND PARTIAL RAMP CLOSURES	
SCALE: NONE	SHEET NO. 1 OF 1 SHEETS STA. TO STA.

F.A.I. RTE. 57	SECTION 210-087-BP	COUNTY Cook	TOTAL SHEETS 32	SHEET NO. 32
TC-17		CONTRACT NO. 60L33		
FED. ROAD DIST. NO. 1 ILLINOIS FED. AID PROJECT				