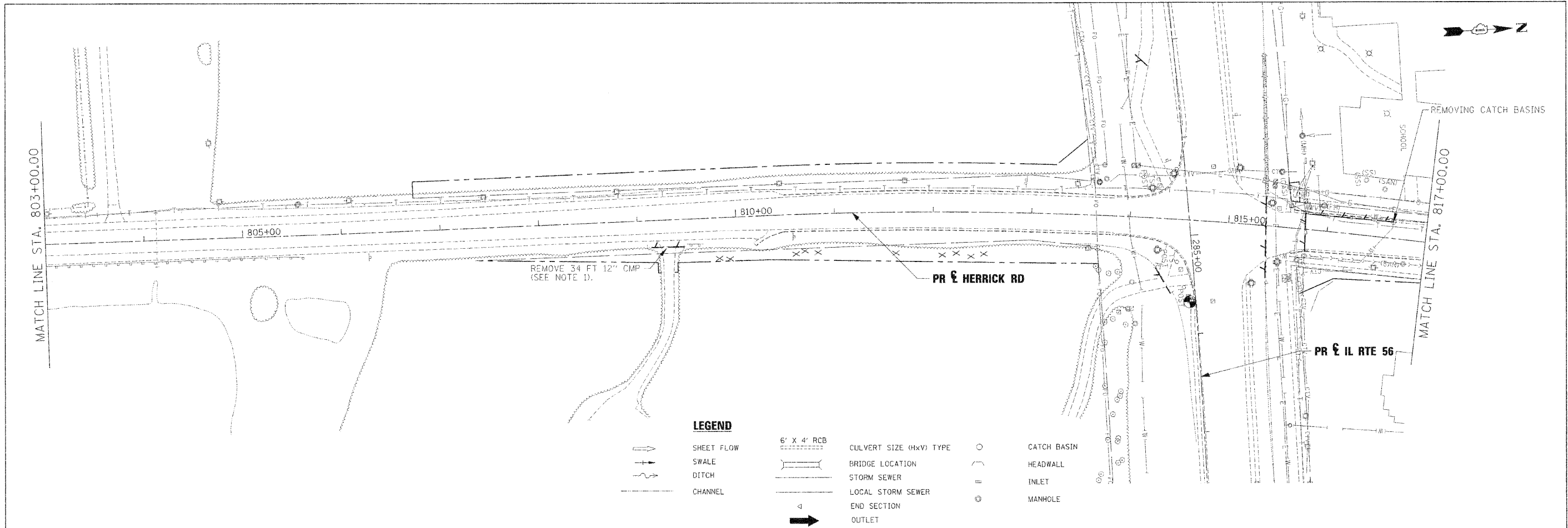


PLAN	DATE
DESIGNED	
CHECKED	
IN CHARGE	
BY	
NO. OF REV. CHECKED	
NO. OF REV. CHECKED	
NO. OF REV. CHECKED	

PROFILE	DATE
DESIGNED	
CHECKED	
IN CHARGE	
BY	
NO. OF REV. CHECKED	
NO. OF REV. CHECKED	
NO. OF REV. CHECKED	

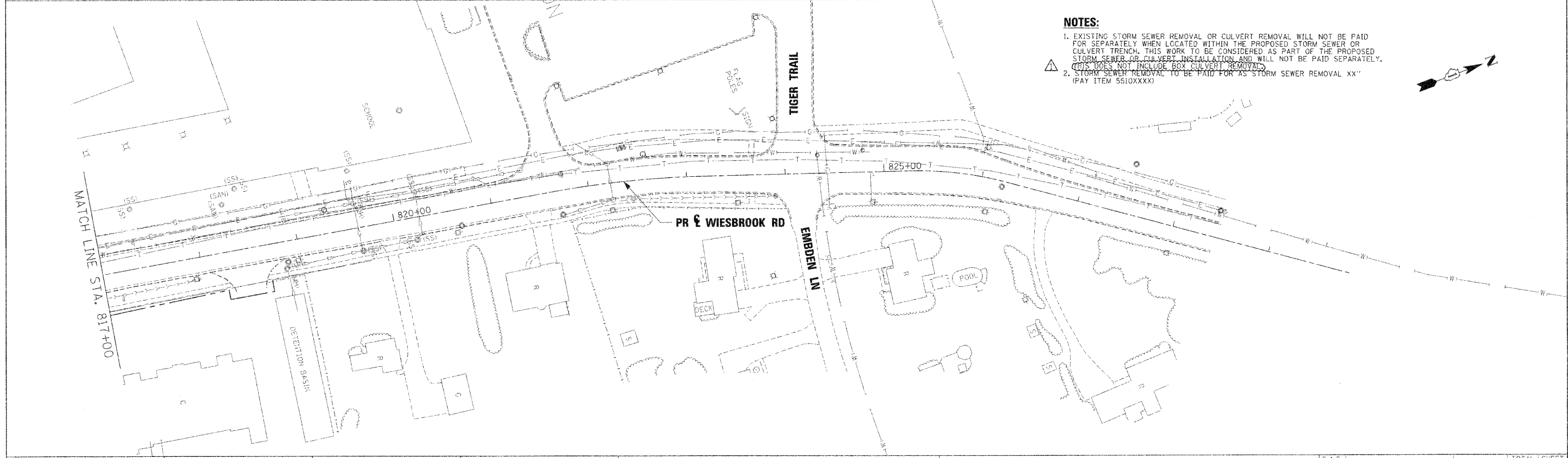


**LEGEND**

	SHEET FLOW		6' X 4' RCB		CULVERT SIZE (HxV) TYPE		CATCH BASIN
	SWALE		BRIDGE LOCATION		STORM SEWER		HEADWALL
	DITCH		LOCAL STORM SEWER		INLET		MANHOLE
	CHANNEL		END SECTION		OUTLET		

**NOTES:**

- EXISTING STORM SEWER REMOVAL OR CULVERT REMOVAL WILL NOT BE PAID FOR SEPARATELY WHEN LOCATED WITHIN THE PROPOSED STORM SEWER OR CULVERT TRENCH. THIS WORK TO BE CONSIDERED AS PART OF THE PROPOSED STORM SEWER OR CULVERT INSTALLATION AND WILL NOT BE PAID SEPARATELY. (THIS DOES NOT INCLUDE BOX CULVERT REMOVAL)
- STORM SEWER REMOVAL TO BE PAID FOR AS "STORM SEWER REMOVAL XX" (PAY ITEM 5510XXXX)



USER NAME =	DESIGNED - KEM	REVISED - ADDENDUM 1- 1/4/2011
PLOT SCALE = 1" = 50'	DRAWN - KEM	REVISED -
PLOT DATE =	CHECKED - LSM	REVISED -
	DATE - 12/6/10	REVISED -



**STATE OF ILLINOIS  
DEPARTMENT OF TRANSPORTATION**

**DRAINAGE REMOVAL PLAN  
IL RTE 56**

SCALE: 1"=50' SHEET NO. 7 OF 9 SHEETS STA. 803+00.00 TO STA. 829+84.41

F.A.P. RTE.	SECTION	COUNTY	TOTAL SHEETS	SHEET NO.
365	157 & 581WRS-2	DUPAGE	681	258
CONTRACT NO.			62419	
ILLINOIS FED. AID PROJECT				