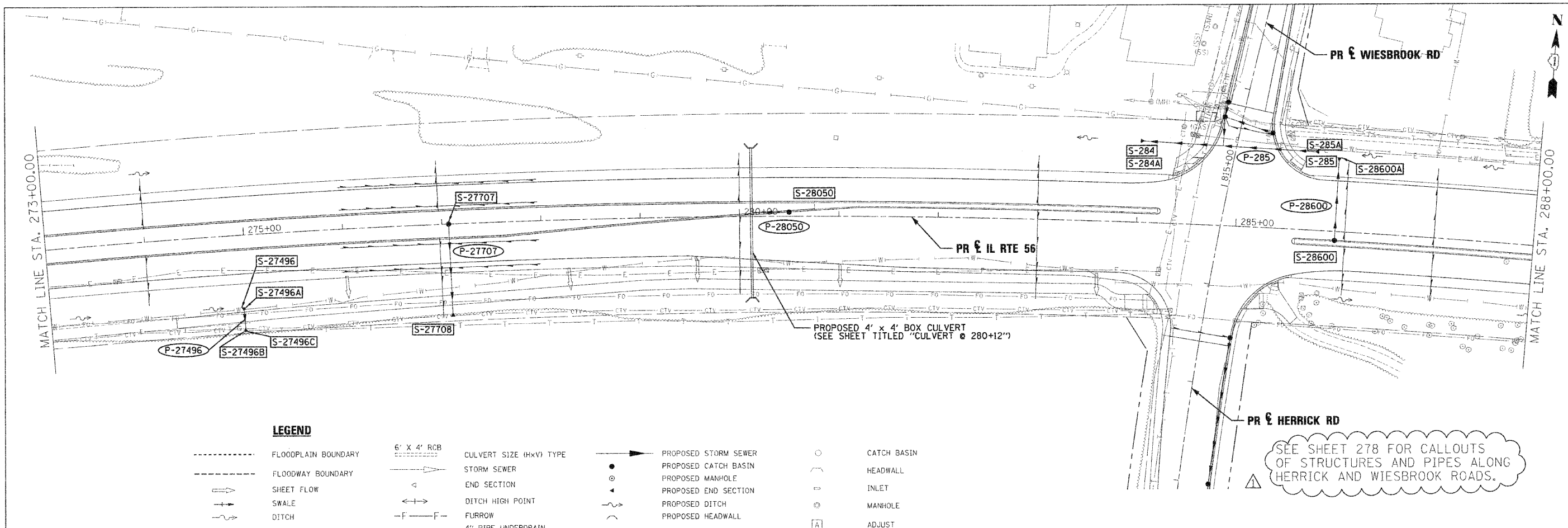


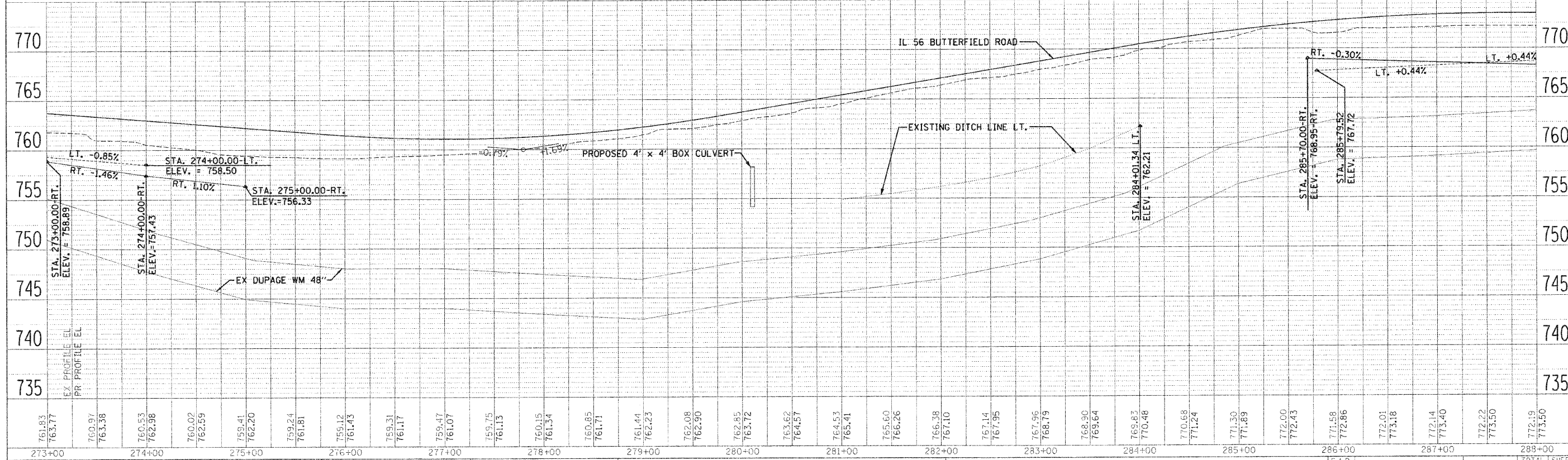
PL (A)	DATE
BY	
CHECKED	
DESIGNED	
NO. OF SHEETS	
NO. OF THIS SHEET	
NO. OF THIS SHEET	
NO. OF THIS SHEET	

DATE	
BY	
CHECKED	
DESIGNED	
NO. OF SHEETS	
NO. OF THIS SHEET	
NO. OF THIS SHEET	
NO. OF THIS SHEET	



LEGEND

-----	FLOODPLAIN BOUNDARY	6" x 4" RCB	CULVERT SIZE (HxV) TYPE	→	PROPOSED STORM SEWER	○	CATCH BASIN
-----	FLOODWAY BOUNDARY	→	STORM SEWER	●	PROPOSED CATCH BASIN	○	HEADWALL
→	SHEET FLOW	△	END SECTION	○	PROPOSED MANHOLE	○	INLET
→	SWALE	→	DITCH HIGH POINT	○	PROPOSED END SECTION	○	MANHOLE
→	DITCH	→	FURROW	→	PROPOSED DITCH	○	ADJUST
→	CHANNEL	→	4" PIPE UNDERDRAIN	→	PROPOSED HEADWALL		



FILE NAME =	DESIGNED - KEM	REVISED - ADDENDUM 1 - 1/4/2011		STATE OF ILLINOIS DEPARTMENT OF TRANSPORTATION	DRAINAGE PLAN AND PROFILE IL RTE 56	F.A.P. RTE.	SECTION	COUNTY	TOTAL SHEETS	SHEET NO.
USER NAME =	DRAWN - KEM	REVISED -				365	(57 & 58)WRS-2	DUPAGE	681	268
PROJECT DATE =	CHECKED - LSM	REVISED -				CONTRACT NO. 62419		ILLINOIS FED. AID PROJECT		
	DATE - 12/6/10	REVISED -			SCALE: 1"=50'	SHEET NO. 3 OF 18 SHEETS		STA. 273+00.00 TO STA. 288+00.00		