

THIS WORK IS TO BE PERFORMED IN STAGE I

**PRESSURE TESTING**

- OPEN NEW 6" VALVE AT STA. 11031+65
- OPEN 2" CORP AT STA. 11026+25 AND STA. 11038+50 TO BLEED OFF AIR AND FLUSH WATER
- CONDUCT PRESSURE TEST

**DISINFECTING**

- UPON SUCCESSFUL PRESSURE TEST, CHLORINATE WATER MAIN AT STA. 11038+00
- AFTER COMPLETION OF CHLORINATION FLUSH MAIN
- FOLLOWING IEPA REQUIREMENTS FOR CHLORINATION CONCENTRATION AND TIME PERIOD, FLUSH WATER MAIN FOLLOWING IEPA DECHLORINATION REQUIREMENTS
- TAKE BACTERIAL TESTS IN ACCORDANCE WITH IEPA REQUIREMENTS AT STA. 11026+00, STA. 11028+00, STA. 11034+62 AND STA. 11039+00

**CONNECTING TO WHEATON SYSTEM BETWEEN BUTTERFIELD ROAD AND DANADA SQUARE WEST**

- UPON RECEIPT OF IEPA OPERATING PERMIT, CLOSE NEW 12" VALVE AT STA. 11026+25
- CLOSE EXISTING 12" VALVE AT STA. 11026+00 WEST OF NAPERVILLE
- CLOSE EXISTING 8" VALVE AT STA. 11028+00
- CONNECT 12" WATER MAIN TO EXISTING WATER MAIN AT STA. 11026+00
- CONNECT 4" WATER MAIN AT STA. 11028+00
- WHEN COMPLETED OPEN 12" VALVE AT STA. 11026+25 FLUSH AT HYDRANT AT STA. 11028+40

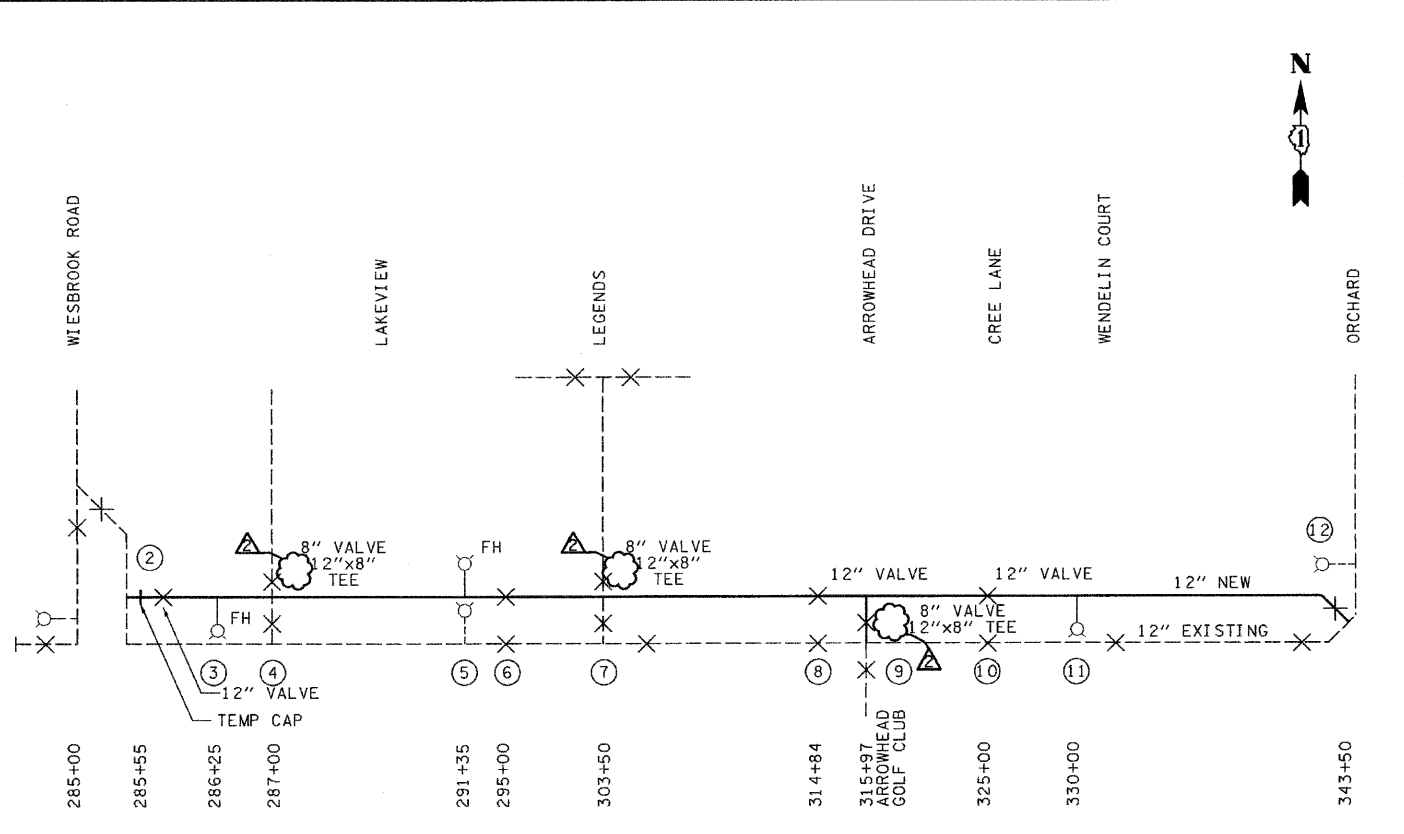
**CONNECTING TO WHEATON SYSTEM BETWEEN DANADA SQUARE WEST AND 2040 NAPERVILLE ROAD**

- CLOSE EXISTING 6" VALVE AT STA. 11034+62
- CLOSE EXISTING 6" VALVE AT STA. 11035+65
- CONNECT 6" WATER MAIN TO EXISTING WATER MAIN AT STA. 11034+62
- CONNECT 6" WATER MAIN TO EXISTING WATER MAIN AT STA. 11035+65
- WHEN COMPLETED OPEN 6" VALVE AT STA. 11034+62 AND 6" VALVE AT STA. 11035+65

**CONNECTING TO WHEATON SYSTEM BETWEEN 2040 NAPERVILLE ROAD AND 2020 NAPERVILLE ROAD**

- CLOSE NEW 16" VALVE AT STA. 11036+00
- CLOSE NEW 16" VALVE AT STA. 11038+25
- CLOSE EXISTING 6" VALVE AT STA. 11036+83
- CLOSE 16" VALVE AT STA. NORTH OF 2000 NAPERVILLE ROAD
- CONNECT TO EXISTING 16" WATER MAIN AT STA. 11038+50
- CONNECT 2" CORP AT STA. 11038+00
- OPEN 16" VALVE AT STA. 11036+00
- FLUSH WATER MAIN THROUGH FIRE HYDRANT AT STA. 11036+83
- OPEN 16" VALVE AT STA. 11038+25
- OPEN 16" VALVE AT STA NORTH OF 2000 NAPERVILLE ROAD

**NAPERVILLE ROAD  
STAGE I**



THIS WORK IS TO BE PERFORMED IN STAGE II

**PRESSURE TESTING**

- OPEN HYDRANT AT STA. 286+25 TO BLEED AIR AND FLUSH FROM WATER MAIN
- OPEN 12" NEW VALVE AT STA. 343+63 TO FILL LINE
- CONDUCT PRESSURE TEST

**DISINFECTING**

- UPON SUCCESSFUL PRESSURE TEST, CHLORINATE WATER MAIN FROM 2" COPPER LINE AT STA. 343+25
- FOLLOWING IEPA REQUIREMENTS FOR CHLORINATION CONCENTRATION AND TIME PERIOD, FLUSH WATER MAIN FOLLOWING IEPA DECHLORINATION REQUIREMENTS
- TAKE BACTERIAL TESTS IN ACCORDANCE WITH IEPA REQUIREMENTS AT STA. 285+55, STA. 287+00, STA. 303+50 AND STA. 315+97

**CONNECTING TO WHEATON SYSTEM BETWEEN WIESEBROOK DRIVE AND LEGENDS**

- UPON RECEIPT OF IEPA OPERATING PERMIT
- CLOSE EXISTING TWO VALVES AT THE INTERSECTION OF LEGENDS DRIVE AND MITCHELL CIRCLE
- CLOSE EXISTING 8" VALVE AT STA. 287+00
- CLOSE EXISTING 8" VALVE AT STA. 303+50
- CONNECT 8" WATER MAIN TO EXISTING WATER MAIN AT STA. 287+00
- CONNECT 8" WATER MAIN TO EXISTING WATER MAIN AT STA. 303+50
- WHEN COMPLETED OPEN TWO EXISTING VALVES AT THE INTERSECTION OF LEGENDS DRIVE AND MITCHELL CIRCLE
- OPEN NEW 8" VALVE AT STA. 287+00
- OPEN NEW 8" VALVE AT STA. 303+50
- FLUSH WATER THROUGH FIRE HYDRANTS AT STA. 286+25 & STA. 291+35

**CONNECTING TO WHEATON SYSTEM AT WIESEBROOK ROAD**

- CLOSE EXISTING VALVE AT WIESEBROOK ROAD AT STA. 285+00 AND EXISTING VALVE AT STA. 295+00
- REMOVE TEMPORARY CAP AT STA. 285+55
- INSTALL 90 DEGREE ELBOW AT STA. 285+00 AND CONNECT TO EXISTING 12" WATERMAIN
- WHEN COMPLETED CLOSE NEW 12" VALVE AT STA. 295+00, OPEN EXISTING 12" VALVE AT WIESEBROOK ROAD AT STA. 285+00 AND NEW 12" VALVE AT STA. 285+75.
- FLUSH THROUGH FIRE HYDRANT AT STA. 291+35
- WHEN COMPLETED OPEN NEW VALVE AT STA. 295+00

**CONNECTING TO ARROWHEAD COUNTRY CLUB**

- CLOSE EXISTING 12" VALVE AT STA. 314+84 AND EXISTING 12" VALVE AT STA. 325+00
- CONNECT 8" WATER MAIN TO EXISTING WATER MAIN AT STA. 315+97
- WHEN COMPLETED OPEN NEW 8" VALVE AT STA. 315+97
- PLACE 12" CAP AT STA. 343+50 TEE

**BUTTERFIELD  
STAGE II**

FILE NAME =	DESIGNED - JMM	REVISED - ADDENDUM A -1/10/11
...\\162419-sht-wm-seq.dgn	DRAWN - TMB	REVISED -
USER NAME = tblank	CHECKED - RMT	REVISED -
PLOT DATE = 1/10/2011	DATE - 12/6/10	REVISED -

**benesch**

**STATE OF ILLINOIS  
DEPARTMENT OF TRANSPORTATION**

<b>WATERMAIN SEQUENCING</b>	
SCALE: NTS	SHEET NO. 2 OF 11 SHEETS STA. TO STA.

F.A.P. RTE.	SECTION	COUNTY	TOTAL SHEETS	SHEET NO.
365	(57 & 58)WRS-2	DUPAGE	681	286
				CONTRACT NO. 62419
ILLINOIS FED. AID PROJECT				