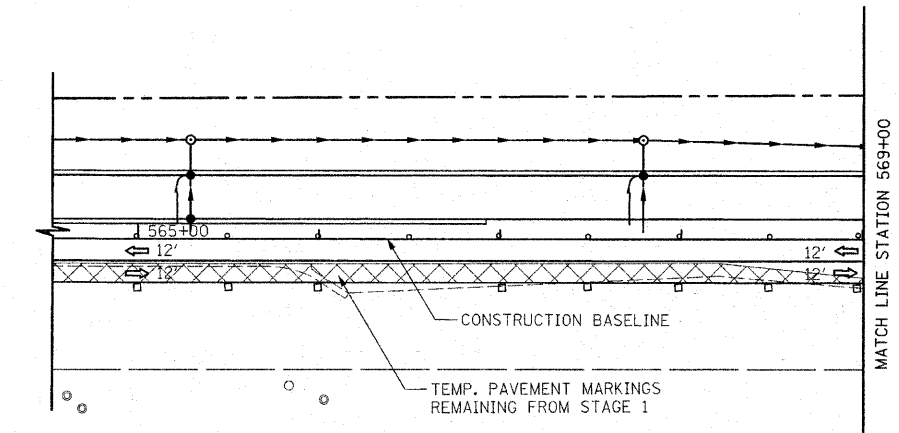
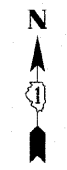

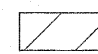
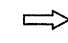

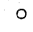
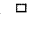
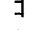
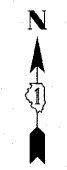
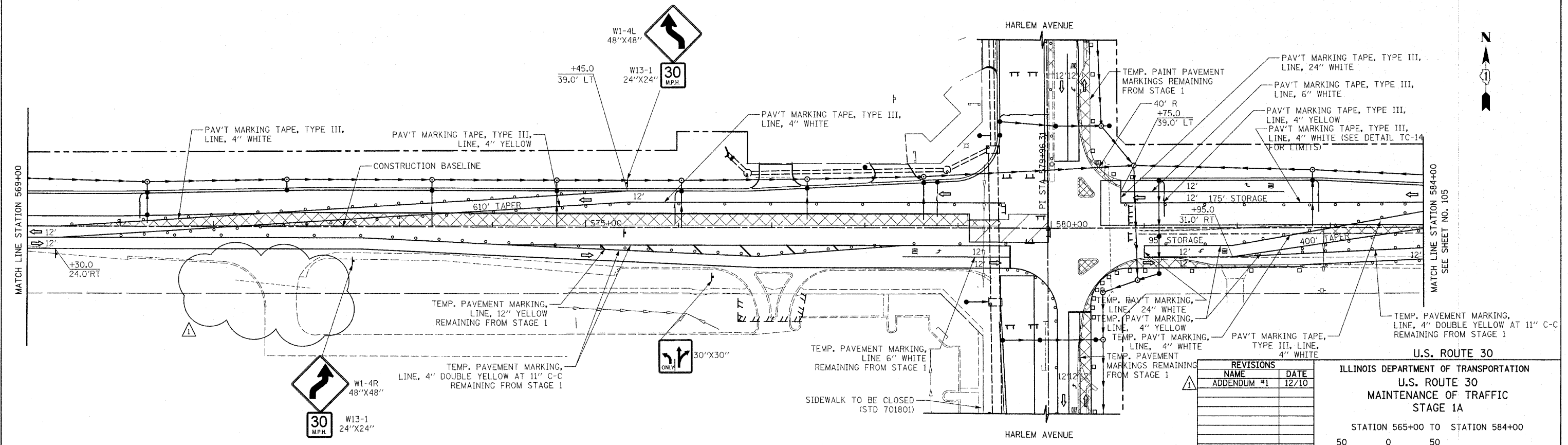


F.A.P. RTE.	SECTION	COUNTY	TOTAL SHEETS	SHEET NO.
353	(12&13)WRS-4	WILL	608	104
STA. 565+00		TO STA. 584+00		
FED. ROAD DIST. NO. 1		ILLINOIS FED. AID PROJECT		



LEGEND

-  TEMPORARY PAVEMENT
 -  CONSTRUCTION WORK ZONE
 -  DIRECTION OF TRAFFIC FLOW
 -  ARROW BOARD
 -  TYPE I OR II BARRICADE
 -  VERTICAL PANEL WITH STEADY BURNING LIGHT
 -  TYPE III BARRICADE WITH FLASHING LIGHTS
- U.S. ROUTE 30



REVISIONS	
NAME	DATE
ADDENDUM #1	12/10

ILLINOIS DEPARTMENT OF TRANSPORTATION
 U.S. ROUTE 30
 MAINTENANCE OF TRAFFIC
 STAGE 1A

STATION 565+00 TO STATION 584+00

SCALE IN FEET
 50 0 50

DATE 6/11/2010

DRAWN BY DJK
 CHECKED BY JRV