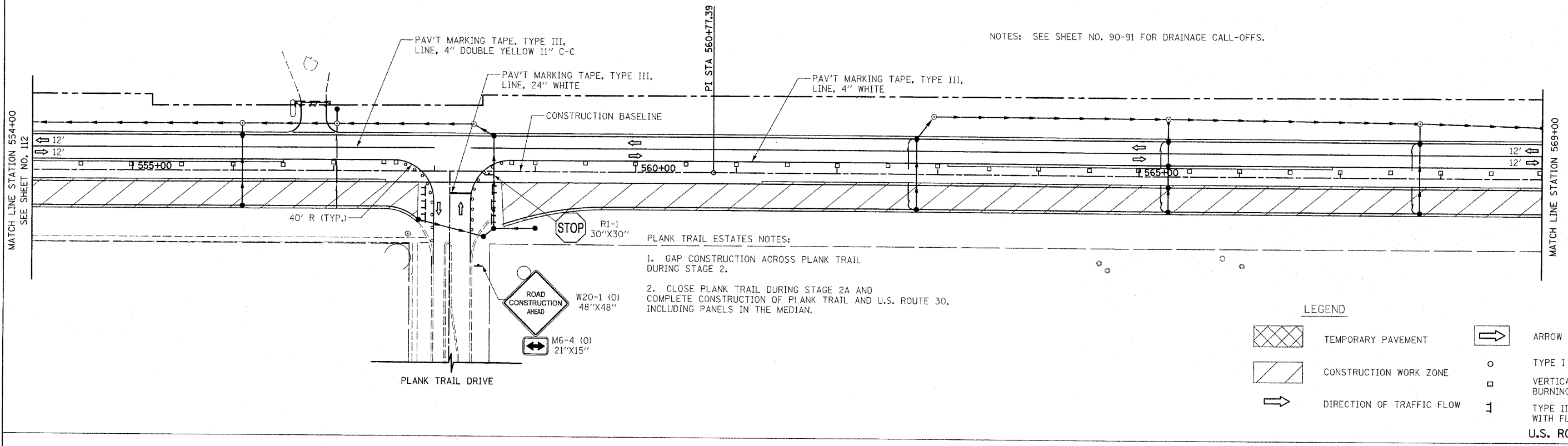


NOTES: SEE SHEET NO. 90-91 FOR DRAINAGE CALL-OFFS.

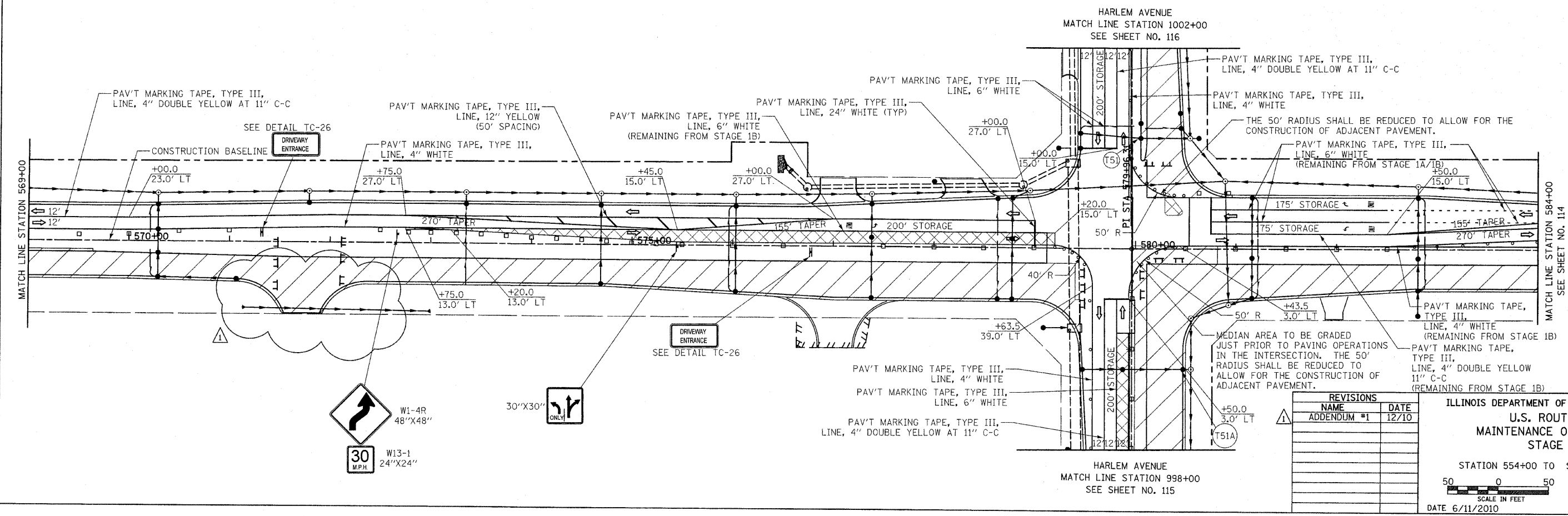


PLANK TRAIL ESTATES NOTES:  
 1. GAP CONSTRUCTION ACROSS PLANK TRAIL DURING STAGE 2.  
 2. CLOSE PLANK TRAIL DURING STAGE 2A AND COMPLETE CONSTRUCTION OF PLANK TRAIL AND U.S. ROUTE 30, INCLUDING PANELS IN THE MEDIAN.

LEGEND

	TEMPORARY PAVEMENT		ARROW BOARD
	CONSTRUCTION WORK ZONE		TYPE I OR II BARRICADE
	DIRECTION OF TRAFFIC FLOW		VERTICAL PANEL WITH STEADY BURNING LIGHT
			TYPE III BARRICADE WITH FLASHING LIGHTS

U.S. ROUTE 30



MEDIAN AREA TO BE GRADED JUST PRIOR TO PAVING OPERATIONS IN THE INTERSECTION. THE 50' RADIUS SHALL BE REDUCED TO ALLOW FOR THE CONSTRUCTION OF ADJACENT PAVEMENT.

REVISIONS	
NAME	DATE
ADDENDUM #1	12/10

ILLINOIS DEPARTMENT OF TRANSPORTATION  
 U.S. ROUTE 30  
 MAINTENANCE OF TRAFFIC  
 STAGE 2  
 STATION 554+00 TO STATION 584+00  
 SCALE IN FEET  
 DATE 6/11/2010  
 DRAWN BY DJK  
 CHECKED BY JRV