

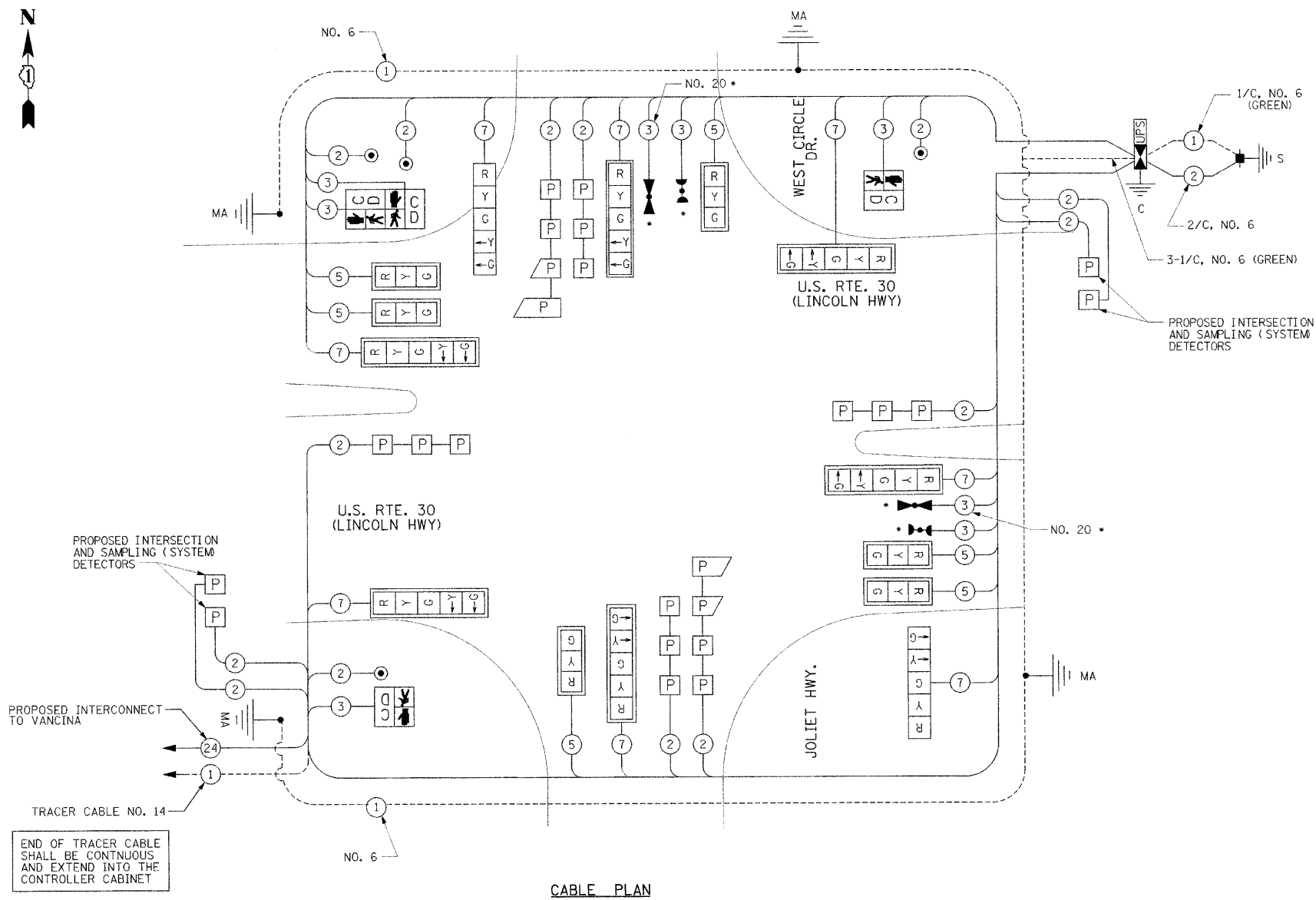
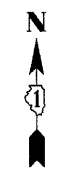
F.A.P. RTE.	SECTION	COUNTY	TOTAL SHEETS	SHEET NO.
353	(12&13)WRS-3	WILL	1235	572
STA.	TO STA.			
FED. ROAD DIST. NO.	ILLINOIS	FED. AID PROJECT		

CONTRACT NO. 62479

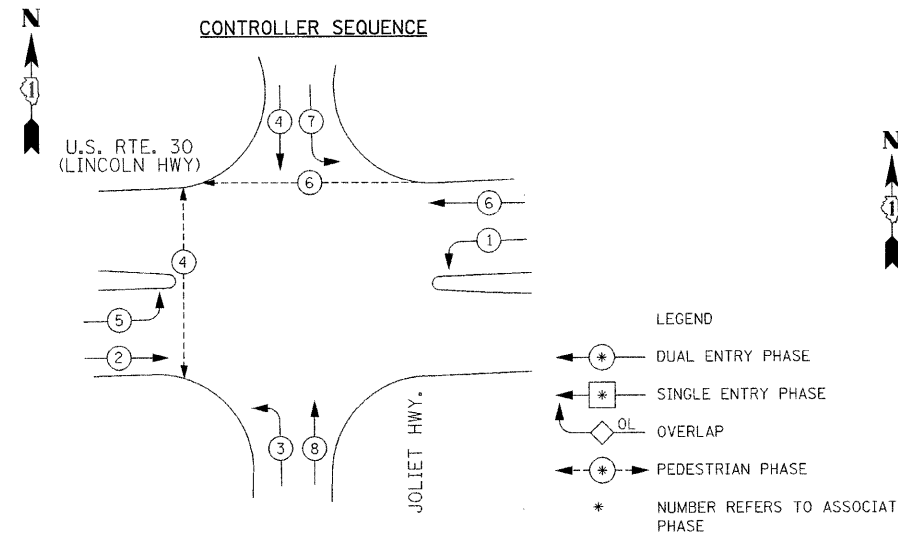
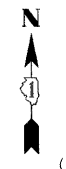
SCHEDULE OF QUANTITIES

ITEM	UNIT	NEW LENOX QUANTITY	EPD* QUANTITY
SIGN PANEL - TYPE 1	SQ FT	33	
SIGN PANEL - TYPE 2	SQ FT	30	
CONDUIT IN TRENCH, 2" DIA., GALVANIZED STEEL	FOOT	576	
CONDUIT IN TRENCH, 3" DIA., GALVANIZED STEEL	FOOT	35	
CONDUIT IN TRENCH, 4" DIA., GALVANIZED STEEL	FOOT	25	
CONDUIT PUSHED, 2" DIA., GALVANIZED STEEL	FOOT	202	
CONDUIT PUSHED, 4" DIA., GALVANIZED STEEL	FOOT	399	
HANDHOLE	EACH	4	
HEAVY-DUTY HANDHOLE	EACH	4	
DOUBLE HANDHOLE	EACH	2	
TRENCH AND BACKFILL FOR ELECTRICAL WORK	FOOT	599	
ELECTRIC CABLE IN CONDUIT, SIGNAL NO. 14 2C	FOOT	591	
ELECTRIC CABLE IN CONDUIT, SIGNAL NO. 14 3C	FOOT	920	
ELECTRIC CABLE IN CONDUIT, SIGNAL NO. 14 5C	FOOT	1536	
ELECTRIC CABLE IN CONDUIT, SIGNAL NO. 14 7C	FOOT	1146	
ELECTRIC CABLE IN CONDUIT, LEAD-IN, NO. 14 1 PAIR	FOOT	2540	
ELECTRIC CABLE IN CONDUIT, SERVICE, NO. 6 2 C	FOOT	57	
STEEL MAST ARM ASSEMBLY AND POLE, 44 FT.	EACH	1	
STEEL MAST ARM ASSEMBLY AND POLE, 48 FT.	EACH	1	
STEEL MAST ARM ASSEMBLY AND POLE WITH DUAL MAST ARMS, 38 FT. AND 22 FT.	EACH	1	
CONCRETE FOUNDATION, TYPE C	FOOT	4	
CONCRETE FOUNDATION, TYPE E 36-INCH DIAMETER	FOOT	54	
SIGNAL HEAD, LED, 1-FACE, 3-SECTION, MAST-ARM MOUNTED	EACH	6	
SIGNAL HEAD, LED, 1-FACE, 5-SECTION, BRACKET MOUNTED	EACH	2	
SIGNAL HEAD, LED, 1-FACE, 5-SECTION, MAST-ARM MOUNTED	EACH	6	
PEDESTRIAN SIGNAL HEAD, LED, 1-FACE, BRACKET MOUNTED WITH COUNTDOWN TIMER	EACH	2	
PEDESTRIAN SIGNAL HEAD, LED, 2-FACE, BRACKET MOUNTED WITH COUNTDOWN TIMER	EACH	1	
TRAFFIC SIGNAL BACKPLATE, LOUVERED, ALUMINUM	EACH	12	
INDUCTIVE LOOP DETECTOR	EACH	10	
* LIGHT DETECTOR	EACH		2
* LIGHT DETECTOR AMPLIFIER	EACH		1
PEDESTRIAN PUSH-BUTTON	EACH	4	
PREFORMED DETECTOR LOOP	FOOT	824	
FULL-ACTUATED CONTROLLER AND CABINET (SPECIAL)	EACH	1	
SERVICE INSTALLATION - POLE MOUNTED	EACH	1	
UNINTERRUPTIBLE POWER SUPPLY	EACH	1	
ELECTRIC CABLE IN CONDUIT, GROUNDING, NO. 6 1C	FOOT	653	
* ELECTRIC CABLE IN CONDUIT NO. 20 3/C, TWISTED, SHIELDED	FOOT		301
STEEL MAST ARM ASSEMBLY AND POLE WITH DUAL MAST ARMS, 14 FT. AND 52 FT.	EACH	1	

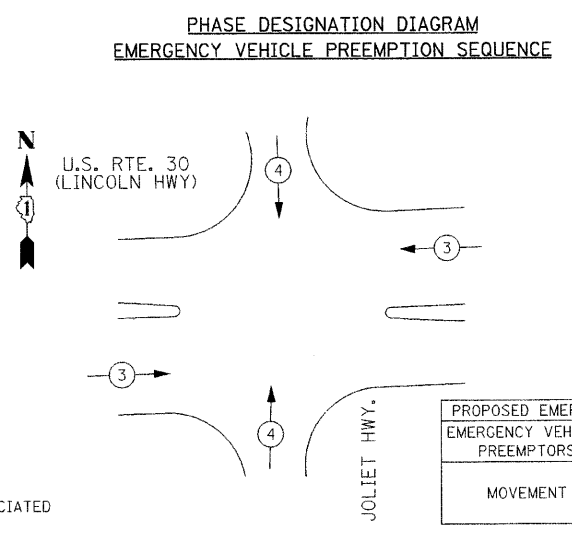
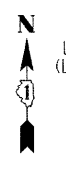
* 100% COST TO THE NEW LENOX FIRE PROTECTION DISTRICT



CABLE PLAN



CONTROLLER SEQUENCE



PHASE DESIGNATION DIAGRAM EMERGENCY VEHICLE PREEMPTION SEQUENCE

- LEGEND
- ← * → DUAL ENTRY PHASE
 - ← * → SINGLE ENTRY PHASE
 - ← OL → OVERLAP
 - ← * → PEDESTRIAN PHASE
 - * NUMBER REFERS TO ASSOCIATED PHASE

PROPOSED EMERGENCY VEHICLE PREEMPTORS	
EMERGENCY VEHICLE PREEMPTORS	MOVEMENT
3	← →
4	↑ ↓

RESTORATION OF WORK AREA, RESTORATION OF THE TRAFFIC SIGNAL WORK AREA SHALL BE INCIDENTAL TO THE RELATED PAY ITEM SUCH AS FOUNDATION, CONDUIT, HANDHOLE, TRENCH AND BACKFILL, ETC., AND NO EXTRA COMPENSATION SHALL BE ALLOWED. ALL ROADWAY SURFACES SUCH AS SHOULDERS, MEDIANS, SIDEWALKS, PAVEMENT, ETC. SHALL BE REPLACED IN KIND. ALL DAMAGE TO MOWED LAWNS SHALL BE REPLACED WITH AN APPROVED SOD, AND ALL DAMAGE TO UNMOWED FIELDS SHALL BE SEED IN ACCORDANCE WITH STANDARD SPECIFICATIONS 252 AND 250 RESPECTIVELY.

THE TRAFFIC SIGNAL CONTROL EQUIPMENT FOR THIS PROJECT SHALL BE "EAGLE" TO MATCH THE EXISTING ADJACENT SYSTEM.

REVISIONS	
NAME	DATE
ADDENDUM A	12-30-10

ILLINOIS DEPARTMENT OF TRANSPORTATION
 CABLE PLAN, PHASE DESIGNATION DIAGRAM, EMERGENCY VEHICLE PREEMPTION, SCHEDULE OF QUANTITIES
 US RTE. 30 AT JOLIET/WEST CIRCLE
 SCALE : 1" = NTS
 DATE : 10/12/2010
 DRAWN BY : RG
 DESIGNED BY : GB
 CHECKED BY : ZH

I.D.O.T. TRAFFIC SIGNAL INSTALLATION ELECTRICAL SERVICE REQUIREMENTS					TOTAL WATTAGE
TYPE	NO. LAMPS	WATTAGE INCAND.	WATTAGE LED	% OPERATION	
SIGNAL (RED)	14		17	0.50	119
(YELLOW)	14		25	0.25	87.5
(GREEN)	14		15	0.25	52.5
ARROW	16		12	0.10	19.2
PED. SIGNAL	4		25	1.00	100
CONTROLLER	1		100	1.00	100
ILLUM. SIGN			25		
FLASHER					
ENERGY COSTS TO:					TOTAL = 478.2
ILLINOIS DEPARTMENT OF TRANSPORTATION 201 WEST CENTER COURT SCHAUMBURG, ILLINOIS 60196-1096 ENERGY SUPPLY CONTACT: MARK ANDERSON PHONE: (815) 724-5988 COMPANY: COM. ED.					

EAGLE # -----