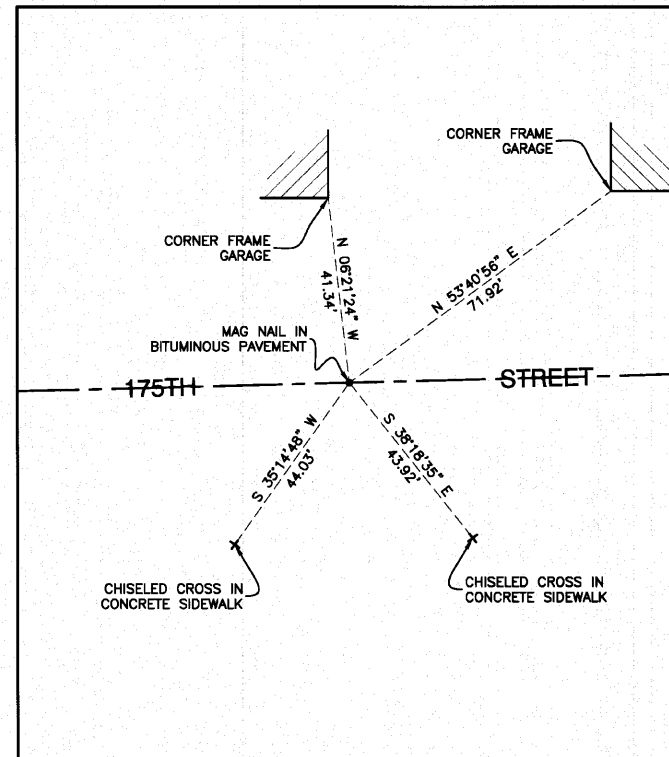
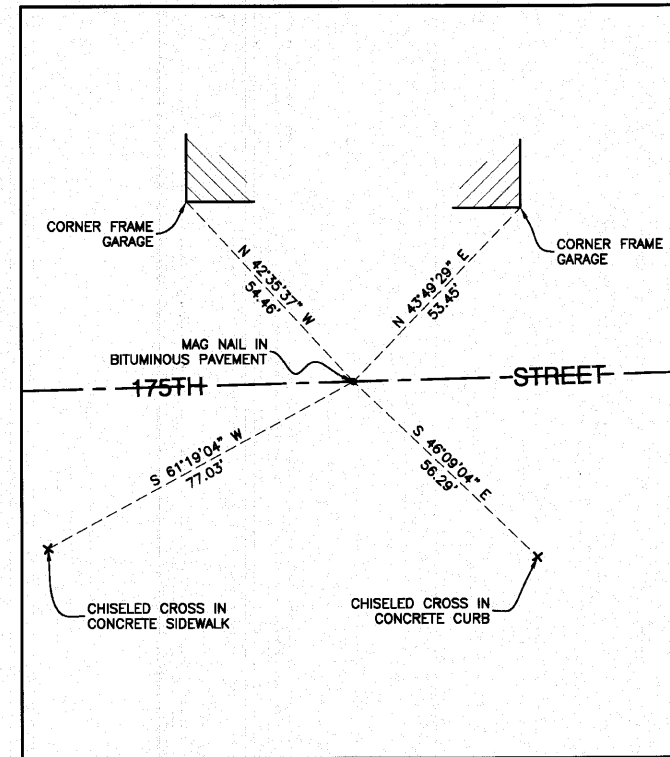


#136 P.O.T. STATION 48+00.00 0.00' RIGHT 175TH STREET
NORTH=1787516.6972 EAST=1131185.3717



#137 P.O.T. STATION 50+00.00 0.00' RIGHT 175TH STREET
NORTH=1787521.9802 EAST=1131385.3019



#138 P.O.T. STATION 50+94.84 0.00' RIGHT 175TH STREET
NORTH=1787524.4855 EAST=1131480.1088

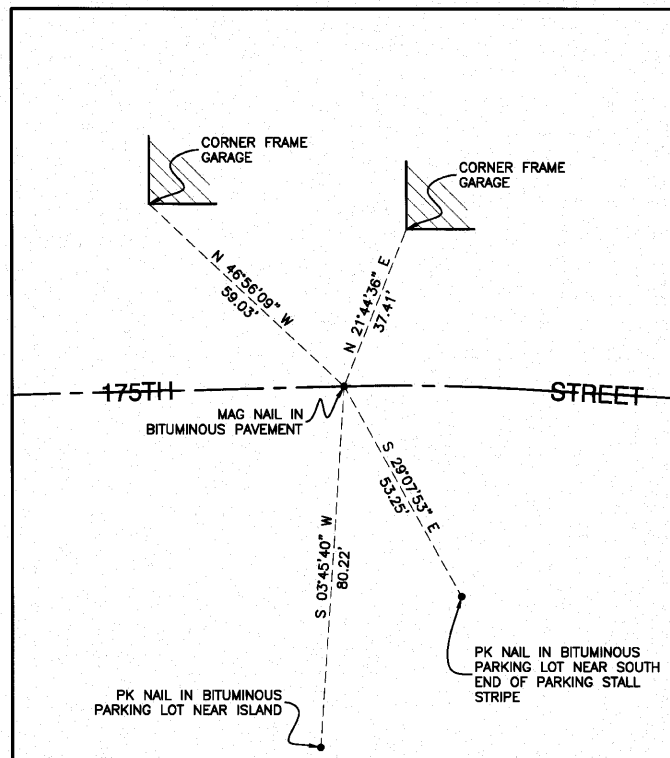
NOTE:

Coordinate values indicated herein are based upon the North American Datum of 1983 adjustment of 2007 (N.A.D. '83 (2007)). The coordinate values are Illinois State Plane Eastern Zone estimated GROUND coordinates utilizing an average location for the length of the project having the following parameters:

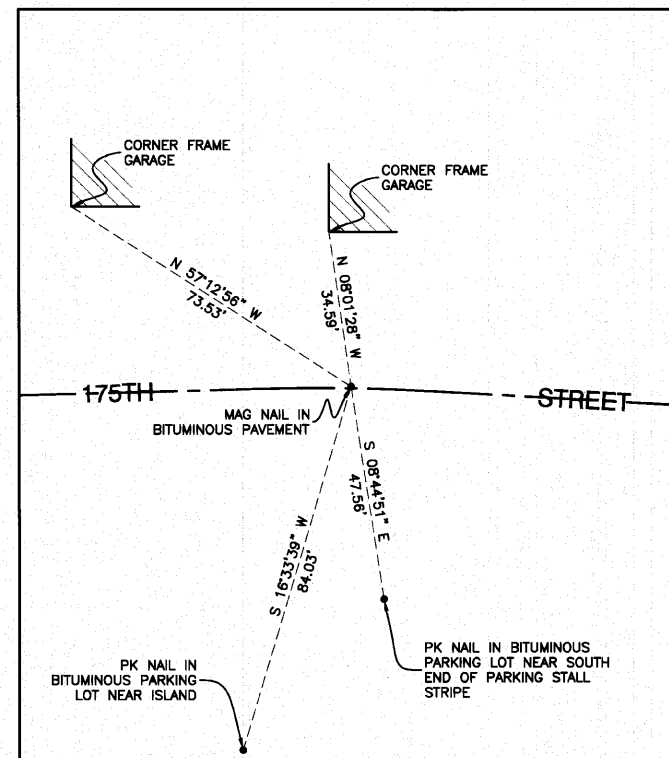
WGS '84 North Latitude = 41°34'32.76869"
WGS '84 West Longitude = 87°46'56.40390"
WGS '84 Height = 590.647 U.S. Feet

Utilization of these parameters should yield a ground scale factor of 1.0000272094.

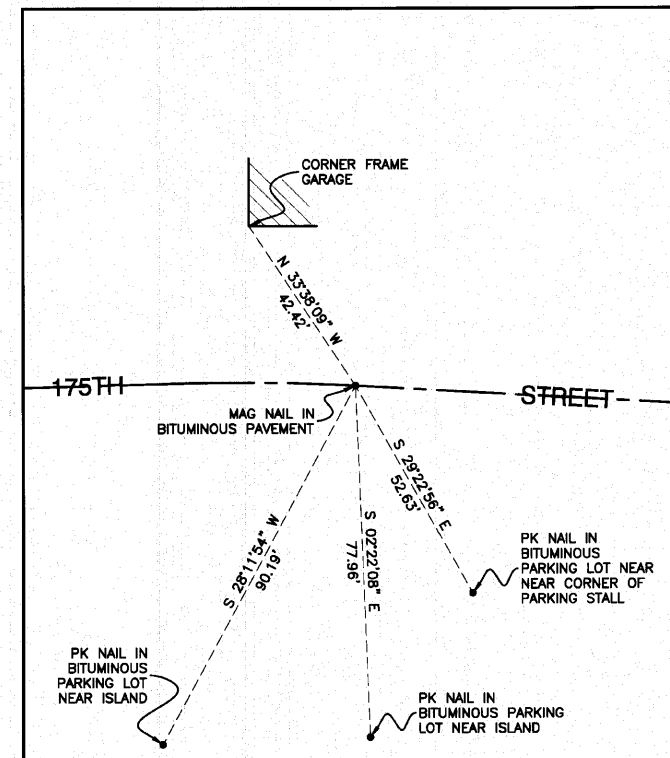
Bearings indicated herein are referenced to the North American Datum of 1983 adjustment of 2007 (N.A.D. '83 (2007)) Illinois State Plane Eastern Zone



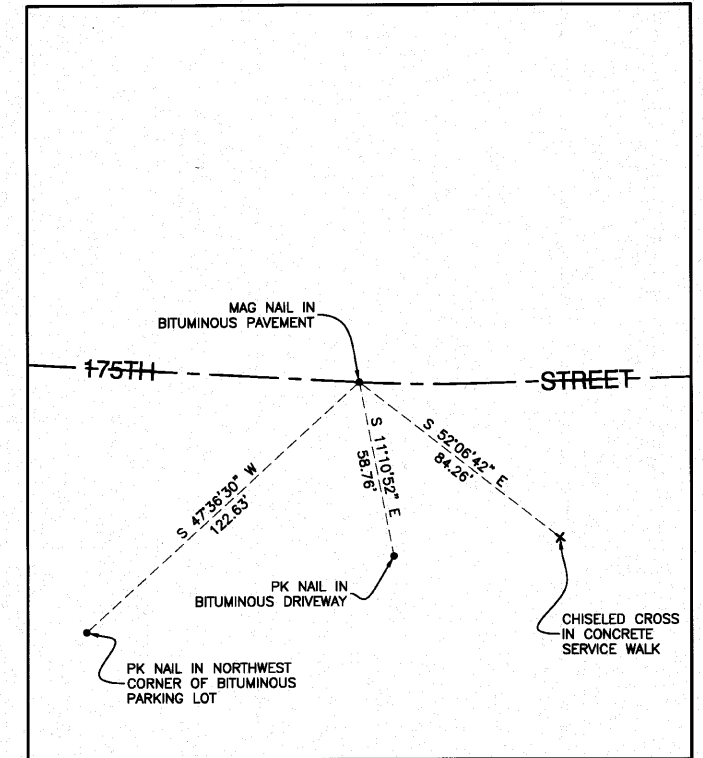
#139 P.C. STATION 52+56.17 0.00' RIGHT 175TH STREET
NORTH=1787528.7469 EAST=1131641.3793



#140 P.I. CURVE "A" 175TH STREET
NORTH=1787529.2408 EAST=1131660.0677



#141 P.T. STATION 52+93.54 175TH STREET
NORTH=1787528.1828 EAST=1131678.7327



#143 P.C. STATION 58+43.09 175TH STREET
NORTH=1787497.0821 EAST=1132227.4074

FILE NAME = 08506-ALQ4-02 Alignment & Ties - TIE 02	USER NAME =	DESIGNED =	REVISED =
		CHECKED = REG, KWM	REVISED =
	PLOT SCALE = Not To Scale	DRAWN = REG, KWM	REVISED =
	PLOT DATE =	CHECKED = REG, KWM	REVISED =

STATE OF ILLINOIS
DEPARTMENT OF TRANSPORTATION

175TH STREET AT HARLEM AVENUE INTERSECTION IMPROVEMENTS ALIGNMENT & TIES		F.A.P. RTE. 348	SECTION 06-00104-00-CH	COUNTY COOK	TOTAL SHEETS 60	SHEET NO. 11
SCALE: Not To Scale		SHEET NO. 11 OF 60 SHEETS		STA. TO STA.	FED. ROAD DIST. NO. 1 ILLINOIS FED. AID PROJECT NHSIP-8003 (851)	