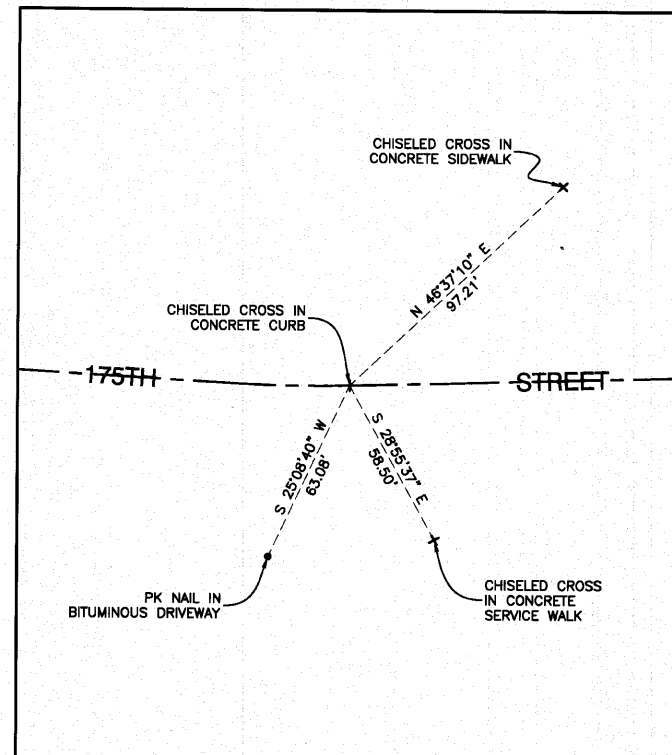
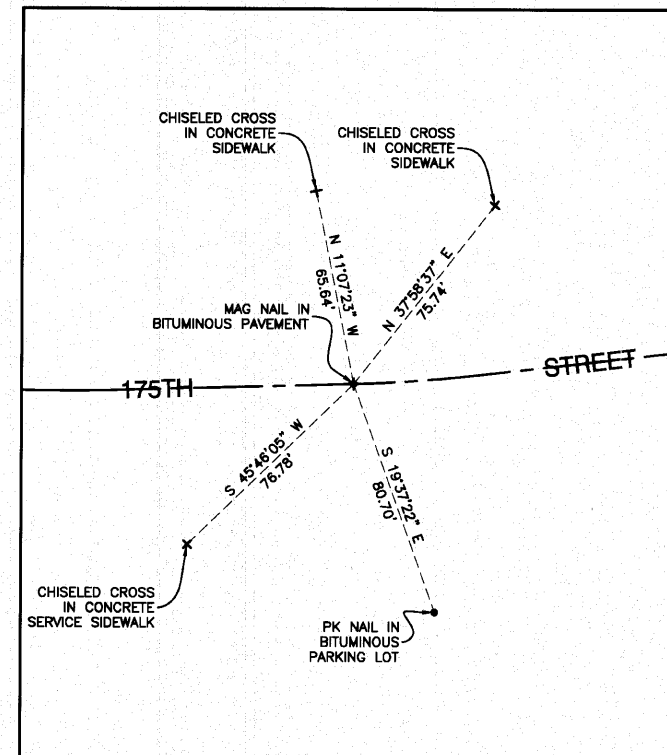


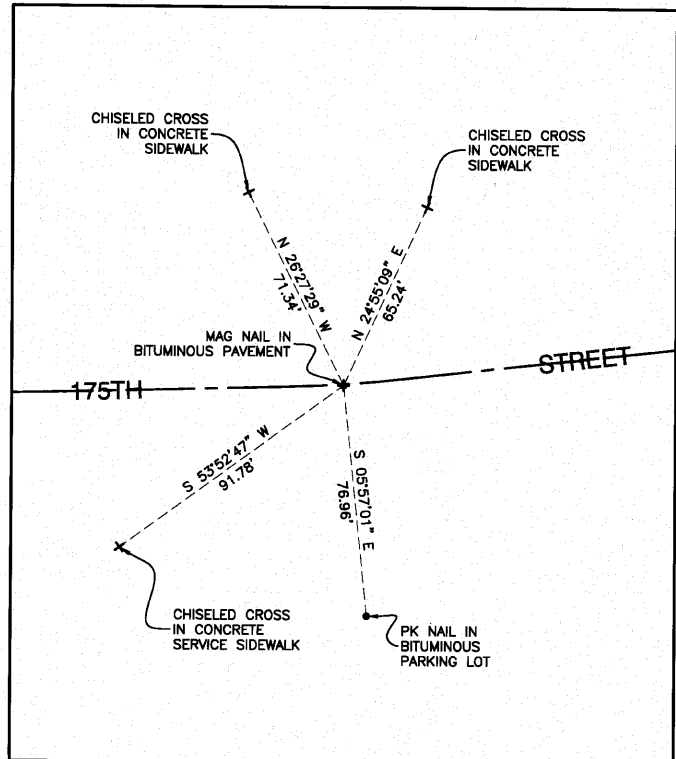
#144 P.I. CURVE "B" 175TH STREET  
NORTH=1787496.0001 EAST=1132246.4954



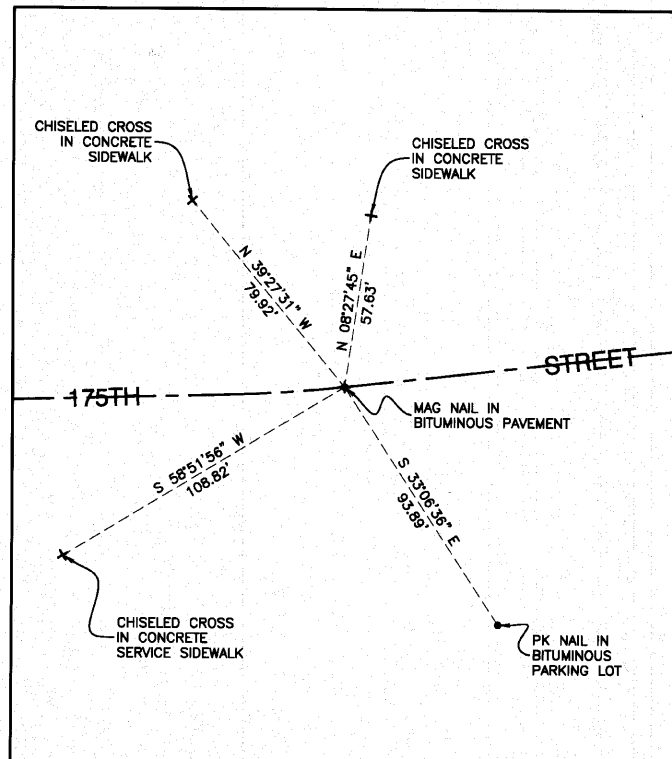
#145 P.T. STATION 58+81.30 175TH STREET  
NORTH=1787496.5411 EAST=1132265.6064



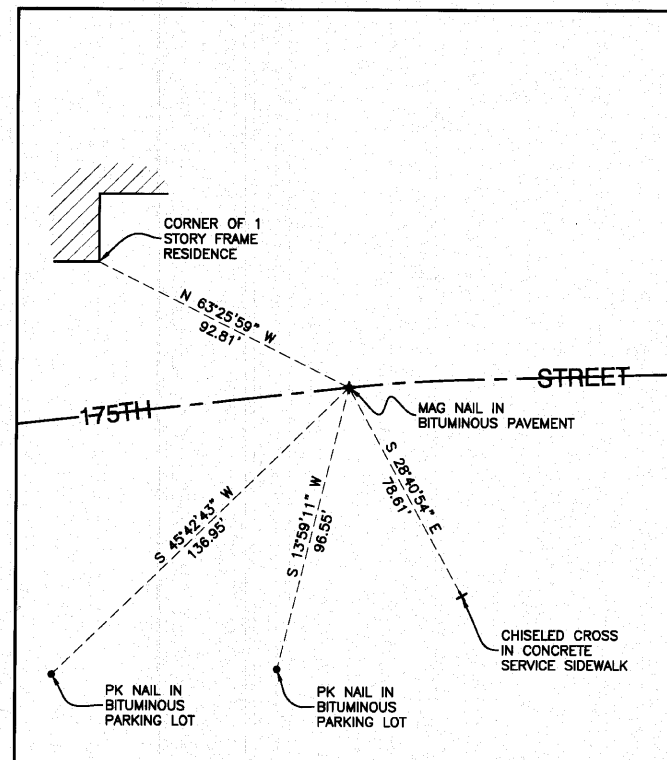
#146 P.C. STATION 59+64.66 175TH STREET  
NORTH=1787498.8993 EAST=1132348.9209



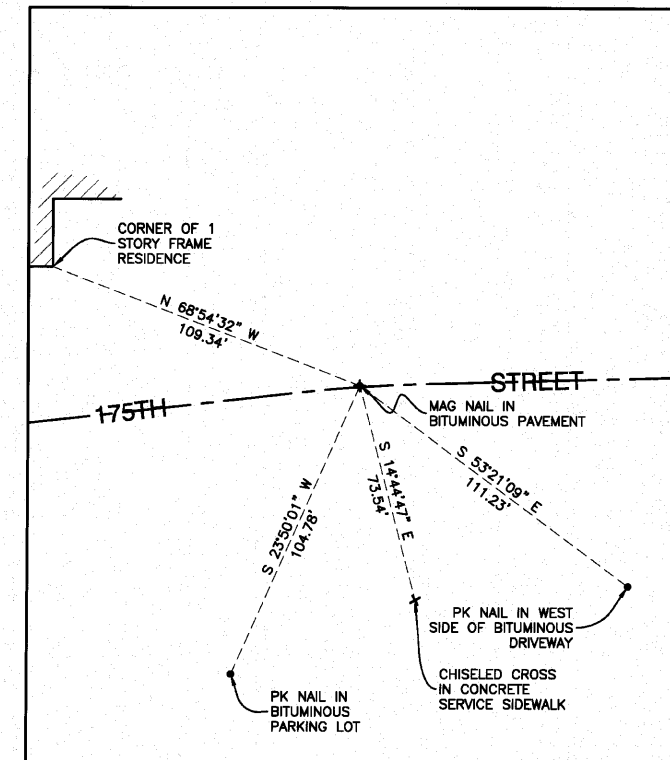
#147 P.I. CURVE "C" 175TH STREET  
NORTH=1787499.4406 EAST=1132368.0419



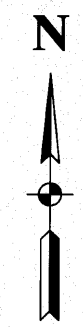
#148 P.T. STATION 60+02.89 175TH STREET  
NORTH=1787501.8025 EAST=1132387.0480



#149 P.C. STATION 61+53.17 175TH STREET  
NORTH=1787518.5875 EAST=1132536.3666



#150 P.I. CURVE "C" 175TH STREET  
NORTH=1787520.7495 EAST=1132555.3728



**NOTE:**

Coordinate values indicated hereon are based upon the North American Datum of 1983 adjustment of 2007 (N.A.D. '83 (2007)). The coordinate values are Illinois State Plane Eastern Zone estimated GROUND coordinates utilizing an average location for the length of the project having the following parameters:

WCS '84 North Latitude = 41°34'32.78869"  
WCS '84 West Longitude = 87°46'56.40390"  
WCS '84 Height = 590.647 U.S. Feet

Utilization of these parameters should yield a ground scale factor of 1.0000272094.

Bearings indicated hereon are referenced to the North American Datum of 1983 adjustment of 2007 (N.A.D. '83 (2007)) Illinois State Plane Eastern Zone

FILE NAME = 06509-ALGN-02 Alignment & Ties - TIE 03	USER NAME =	DESIGNED =	REVISED =
	PLOT SCALE = Not To Scale	CHECKED = REG, KWM	REVISED =
	PLOT DATE =	DRAWN = REG, KWM	REVISED =
		CHECKED = REG, KWM	REVISED =

STATE OF ILLINOIS  
DEPARTMENT OF TRANSPORTATION

175TH STREET AT HARLEM AVENUE  
INTERSECTION IMPROVEMENTS  
ALIGNMENT & TIES

SCALE: Not To Scale SHEET NO. 12 OF 60 SHEETS STA. TO STA.

F.A.P. RTE. 348	SECTION 06-00104-00-CH	COUNTY COOK	TOTAL SHEETS 60	SHEET NO. 12
CONTRACT NO. 63453				
FED. ROAD DIST. NO. 1 ILLINOIS FED. AID PROJECT#HSIP-8003 (851)				