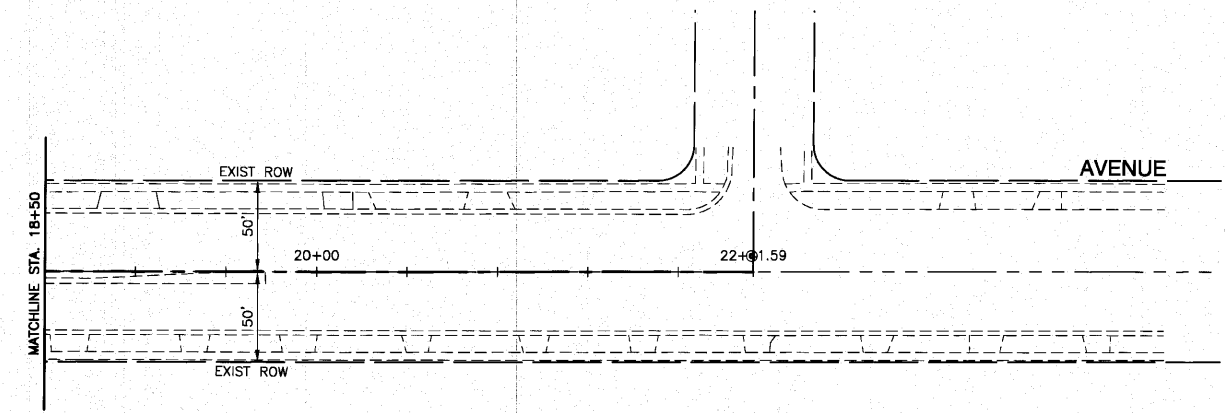
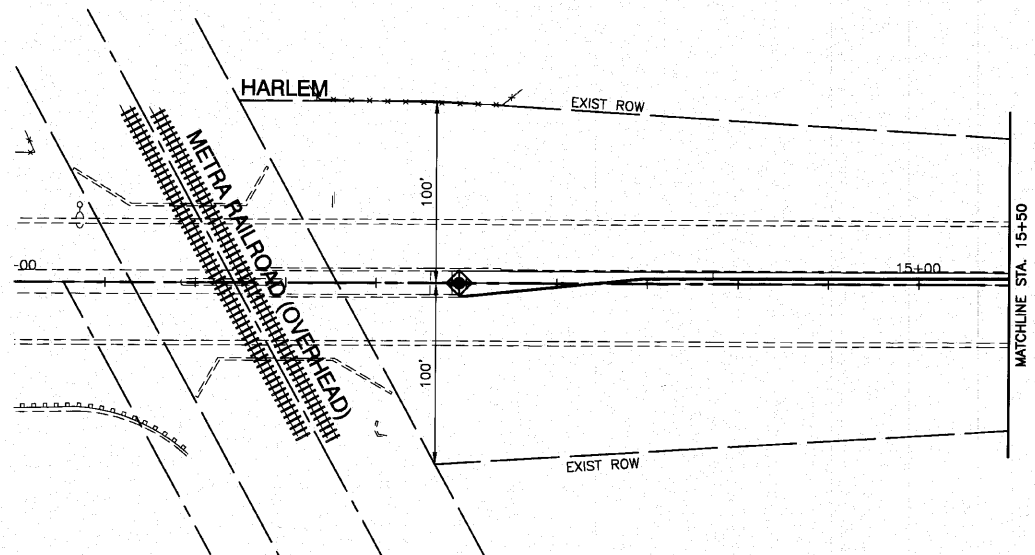
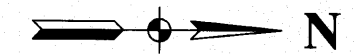


- LEGEND**
- SF — PERIMETER EROSION BARRIER TO BE PLACED 1' FROM R.O.W.
 - ⊙ TREE PROTECTION
 - ◆ INLET FILTER
 - ▨ SEEDING CLASS 2A WITH EXCELSIOR BLANKET



FILE NAME = 06508-UNSC-01 - UNSC01	USER NAME =	DESIGNED — WPD	REVISED —	STATE OF ILLINOIS DEPARTMENT OF TRANSPORTATION	175TH STREET AT HARLEM AVENUE INTERSECTION IMPROVEMENTS LANDSCAPING AND EROSION CONTROL PLAN			F.A.P. RTE.	SECTION	COUNTY	TOTAL SHEETS	SHEET NO.
	PLOT SCALE =	CHECKED — WPD	REVISED —					348	06-00104-00-CH	COOK	60	26
	PLOT DATE = 10-14-10	DRAWN — AG	REVISED —					CONTRACT NO. 63453				
		CHECKED — AG	REVISED —					FED. ROAD DIST. NO. 1 ILLINOIS FED. AID PROJECT#HSIP-8003 (651)				
					SCALE: 1"=50'	SHEET NO. 26 OF 60 SHEETS		STA.	TO STA.			