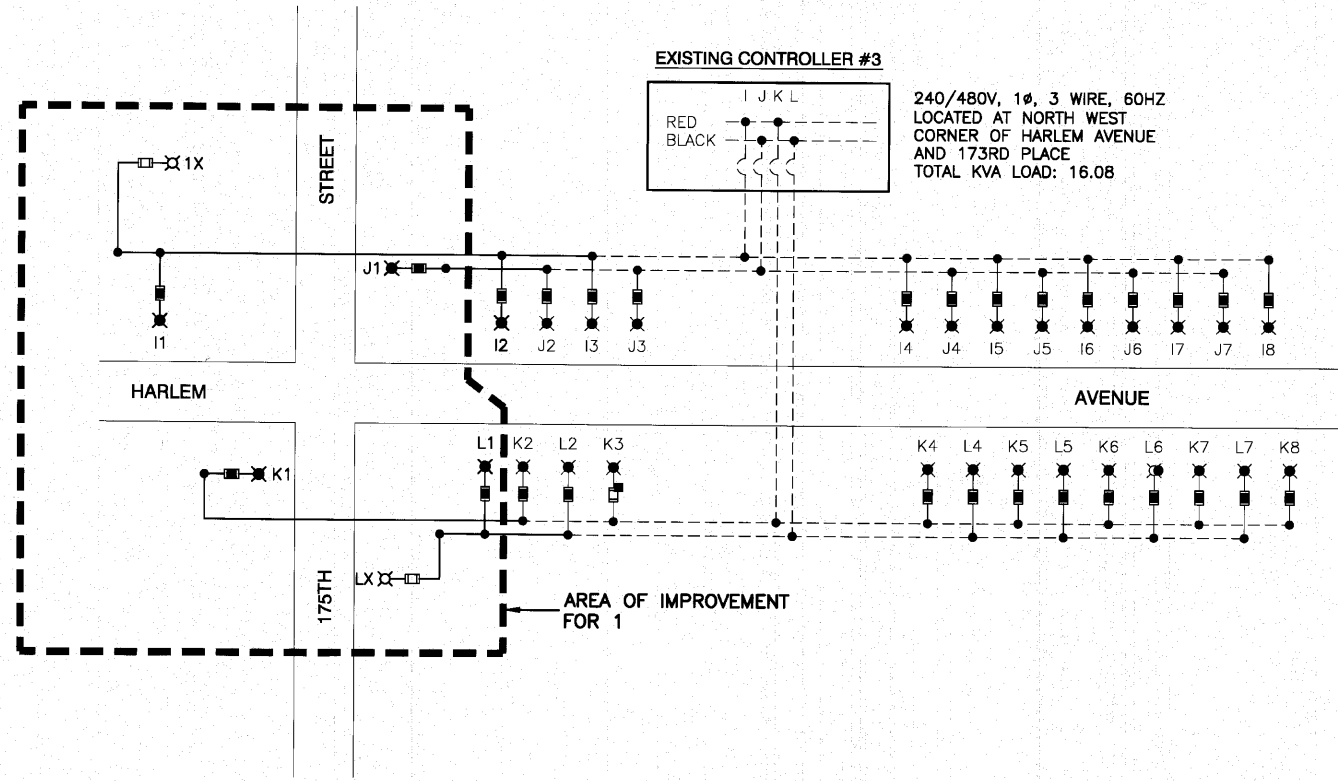
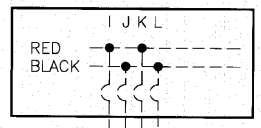


LOAD TABULATIONS CONTROLLER #3

CIRCUIT	WATTS	AMPS @ 240V	
		RED PHASE	BLACK PHASE
I	4,129	17.30	
J	3,346		14.00
K	3,824	16.00	
L	3,173		13.30
SUBTOTAL	14,472	33.30	27.30
		TOTAL AMPS @ 240 V	60.60

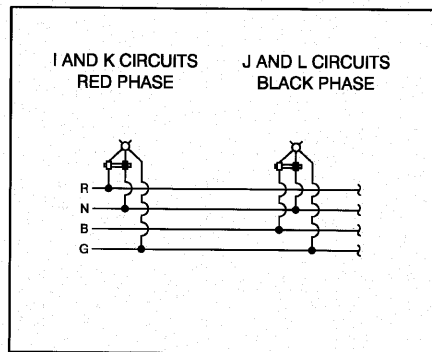


EXISTING CONTROLLER #3



240/480V, 1Ø, 3 WIRE, 60HZ
 LOCATED AT NORTH WEST
 CORNER OF HARLEM AVENUE
 AND 173RD PLACE
 TOTAL KVA LOAD: 16.08

TYPICAL POLE WIRING



LEGEND

- ⊗ LUMINAIRE, 250W HPS, 240V
- ⊗ LUMINAIRE, 400W HPS, 240V
- FUSE, 3.5 AMP
- FUSE, 6.0 AMP
- A1 LUMINAIRE CIRCUIT
- ⌋ CIRCUIT BREAKER
- CONNECTION



FILE NAME = 08508-LGHT-02 - P01	USER NAME =	DESIGNED — WPD	REVISED —
	PLOT SCALE = 1"=1'	CHECKED — WPD	REVISED —
	PLOT DATE = 10-14-10	DRAWN — AG	REVISED —
		CHECKED — AG	REVISED —

STATE OF ILLINOIS
 DEPARTMENT OF TRANSPORTATION

175TH STREET AT HARLEM AVENUE
 INTERSECTION IMPROVEMENTS
 SINGLE LINE WIRING DIAGRAM

SCALE: NA SHEET NO. 28 OF 60 SHEETS STA. TO STA.

F.A.P. RTE.	SECTION	COUNTY	TOTAL SHEETS	SHEET NO.
348	06-00104-00-CH	COOK	60	28
FED. ROAD DIST. NO. 1 ILLINOIS				FED. AID PROJECT #HSIP-8003 (851)
				CONTRACT NO. 63453