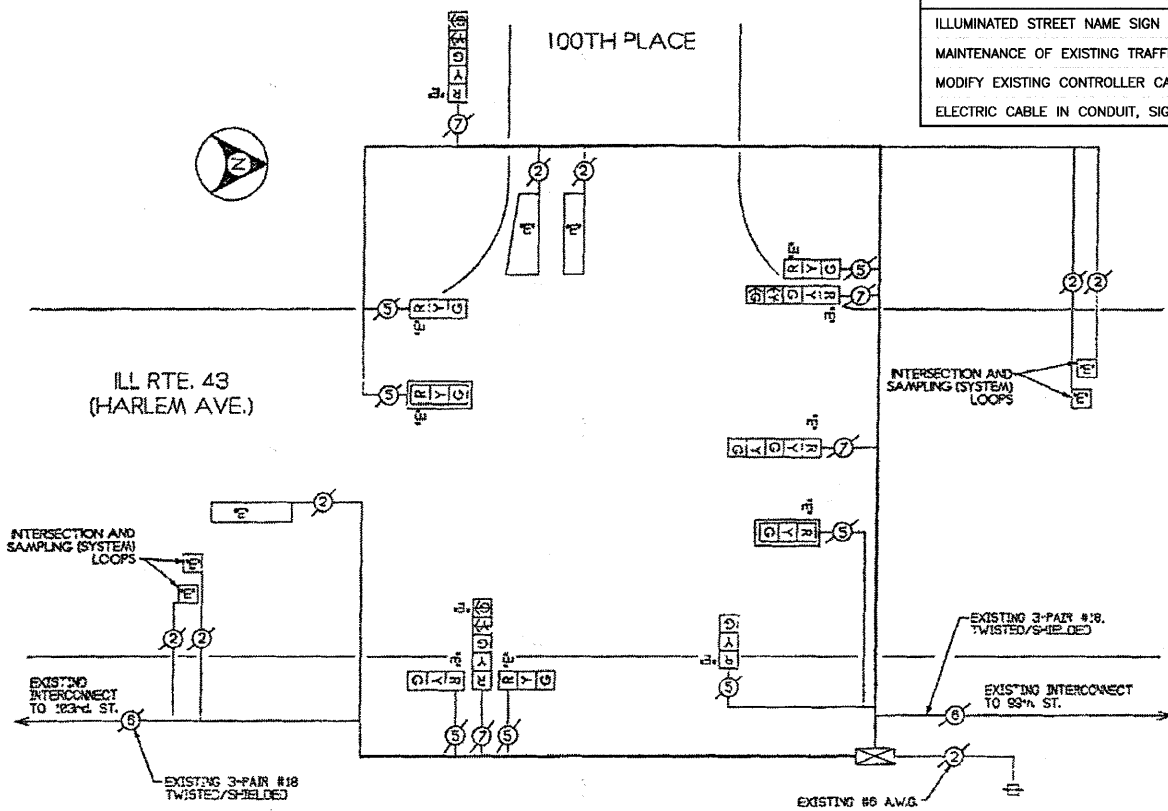


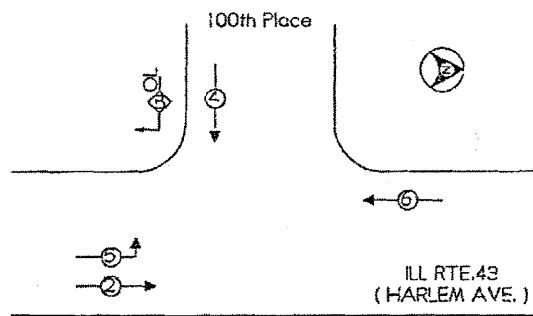
EXISTING CABLE DIAGRAM



EXISTING SEQUENCE OF OPERATIONS

- CONTROLLER SEQUENCE -

REFERRING TO STANDARD 857001, THE VEHICULAR AND PEDESTRIAN PHASES USED ARE DESIGNATED BELOW.



LEGEND

- ⊕ - DUAL ENTRY PHASE
- ⊕ - OVERLAP
- ⊕ - PEDESTRIAN PHASE
- # - NUMBER REFERS TO ASSOCIATED PHASE.

PHASE DESIGNATION DIAGRAM  
DUAL ENTRY - ALL LEGS  
PROTECTED/PERMITTED LEFT TURN PHASING  
WITH RIGHT TURN OVERLAPS

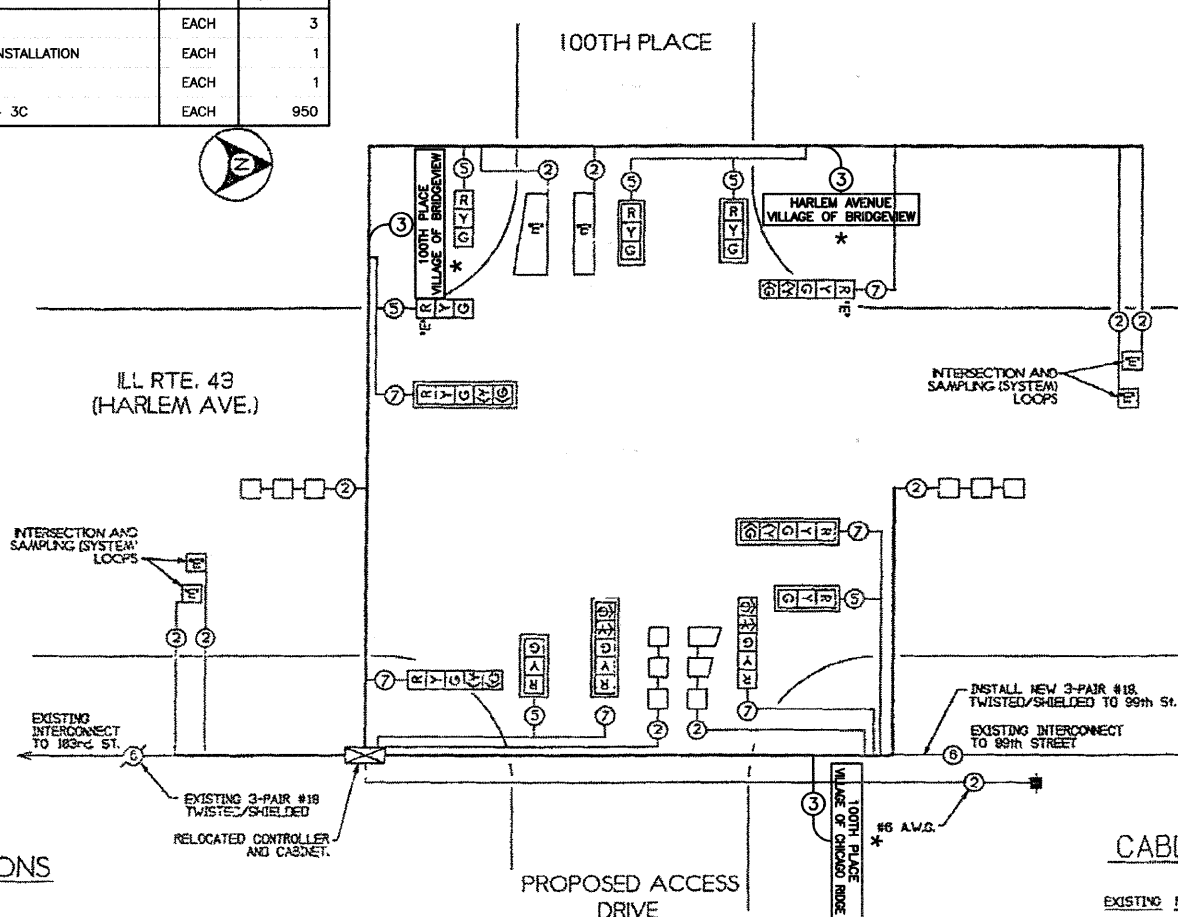
RIGHT TURN OVERLAP PHASE DESIGNATION NOTES  
FOR DUAL ENTRY OPERATION-ALL LEGS

OVERLAP LETTER	PERMISSIVE PHASE	PROTECTED PHASE
B	-	4 + 5

\* SCHEDULE OF QUANTITIES

ITEM	UNIT	QUANTITY
ILLUMINATED STREET NAME SIGN	EACH	3
MAINTENANCE OF EXISTING TRAFFIC SIGNAL INSTALLATION	EACH	1
MODIFY EXISTING CONTROLLER CABINET	EACH	1
ELECTRIC CABLE IN CONDUIT, SIGNAL NO. 14 3C	EACH	950

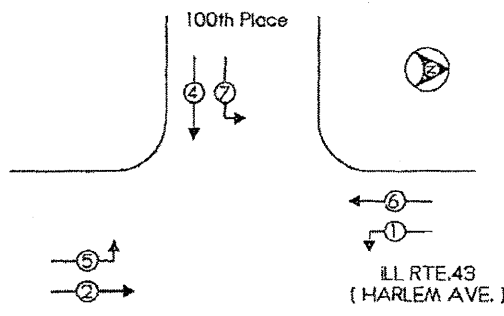
PROPOSED CABLE DIAGRAM



PROPOSED SEQUENCE OF OPERATIONS

- CONTROLLER SEQUENCE -

REFERRING TO STANDARD 857001, THE VEHICULAR AND PEDESTRIAN PHASES USED ARE DESIGNATED BELOW.



LEGEND

- ⊕ - DUAL ENTRY PHASE
- ⊕ - OVERLAP
- ⊕ - PEDESTRIAN PHASE
- # - NUMBER REFERS TO ASSOCIATED PHASE.

PHASE DESIGNATION DIAGRAM  
DUAL ENTRY - ALL LEGS  
PROTECTED/PERMITTED LEFT TURN PHASING

NOTE  
PHASE #7 DETECTORS SHALL PLACE  
CALLS INTO PHASE #4 AND #7.

SCHEDULE OF QUANTITIES

135	FOOT	SIGN PANEL, TYPE 1	1898	FOOT	ELECTRIC CABLE IN CONDUIT, COMMUNICATION, NO. 14, 3-PAIR
1	EACH	SIGNAL HEAD, 1-FACE, 3-SECTION, BRACKET MOUNTED	1	FOOT	SERVICE INSTALLATION, TYPE D
2	EACH	SIGNAL HEAD, 1-FACE, 2-SECTION, BRACKET MOUNTED	8	FOOT	CONCRETE FOUNDATION, TYPE A
4	EACH	SIGNAL HEAD, 1-FACE, 3-SECTION, MAST ARM MOUNTED	4	FOOT	CONCRETE FOUNDATION, TYPE D
3	EACH	SIGNAL HEAD, 1-FACE, 5-SECTION, MAST ARM MOUNTED	10	FOOT	CONCRETE FOUNDATION, TYPE E, 24" DIAMETER
7	EACH	TRAFFIC SIGNAL BACKPLATE, LOUVERED	38	FOOT	CONCRETE FOUNDATION, TYPE E, 30" DIAMETER
2	EACH	TRAFFIC SIGNAL POST, GALVANIZED STEEL, 10 FT.	3	EACH	HANDHOLE
1	EACH	STEEL MAST ARM ASSEMBLY AND POLE, 22 FT.	1	EACH	HEAVY-DUTY HANDHOLE
1	EACH	STEEL MAST ARM ASSEMBLY AND POLE, 38 FT.	1	EACH	DOUBLE HANDHOLE
1	EACH	STEEL MAST ARM ASSEMBLY AND POLE, 34 FT.	800	FOOT	TRENCH AND BACKFILL FOR ELECTRICAL WORK
3	EACH	INDUCTIVE LOOP DETECTOR	1	L.S.	TRAFFIC CONTROL AND PROTECTION
320	FOOT	DETECTOR LOOP, TYPE 1	4	EACH	DRILL EXISTING HANDHOLE
569	FOOT	CONDUIT IN TRENCH, 2" DIA, GALVANIZED STEEL	1	EACH	TEMPORARY TRAFFIC SIGNAL INSTALLATION
128	FOOT	CONDUIT IN TRENCH, 2-1/2" DIA, GALVANIZED STEEL	1	EACH	MAINTENANCE OF EXISTING TRAFFIC SIGNAL
46	FOOT	CONDUIT IN TRENCH, 1" DIA, GALVANIZED STEEL	598	FOOT	REMOVE AND REINSTALL ELECTRIC CABLE FROM CONDUIT
185	FOOT	CONDUIT PUSH-IN, 2" DIA, GALVANIZED STEEL	230	SUFT.	REMOVE AND REPLACE VEGETATION SURFACE
283	FOOT	CONDUIT PUSH-IN, 4" DIA, GALVANIZED STEEL	2640	FOOT	REMOVE ELECTRIC CABLE FROM CONDUIT
1378	FOOT	ELECTRIC CABLE IN CONDUIT, SIGNAL, NO. 14 5/C	598	FOOT	REMOVE AND REINSTALL ELECTRIC CABLE FROM CONDUIT
1878	FOOT	ELECTRIC CABLE IN CONDUIT, SIGNAL, NO. 14 7/C	1	EACH	REMOVE EXISTING HANDHOLE
172	FOOT	ELECTRIC CABLE IN CONDUIT, SERVICE, NO. 6, 2/C	4	EACH	REMOVE EXISTING CONCRETE FOUNDATION
2837	FOOT	ELECTRIC CABLE IN CONDUIT, LEAD-IN, NO. 14, 1-PAIR	1	EACH	MODIFY EXISTING CONTROLLER
			1	EACH	REMOVE EXISTING TRAFFIC SIGNAL EQUIPMENT
			1	EACH	RELOCATE EXISTING TRAFFIC SIGNAL CONTROLLER

CABLE PLAN LEGEND

- | EXISTING | PROPOSED | DESCRIPTION  |
|----------|----------|--|
| ⊕        | ⊕        | 8" TRAFFIC SIGNAL SECTION  |
| ⊕        | ⊕        | 12" TRAFFIC SIGNAL SECTION   |
| ⊕        | ⊕        | 12" PEDESTRIAN SIGNAL SECTION  |
| ⊕        | ⊕        | 12" PEDESTRIAN SIGNAL SECTION  |
| ⊕        | ⊕        | CONTROLLER CABINET   |
| ⊕        | ⊕        | SERVICE INSTALLATION   |
| ⊕        | ⊕        | VEHICLE DETECTOR, INDUCTIVE LOOP   |
| ⊕        | ⊕        | MAGNETIC DETECTOR  |
| ⊕        | ⊕        | EMERGENCY VEHICLE LIGHT DETECTOR   |
| ⊕        | ⊕        | CONFIRMATION BEACON  |
| ⊕        | ⊕        | PUSH-BUTTON DETECTOR   |
| ⊕        | ⊕        | ⊕ DENOTES NUMBER OF CONDUCTORS (NEW) ALL LOOP DETECTOR CABLE TO BE SHIELDED, ALL CABLE NO. 14 EXCEPT AS INDICATED. |
| ⊕        | ⊕        | ⊕ SIGNAL FACE WITH BACKPLATE   |
| ⊕        | ⊕        | * INDICATES PROGRAMMED HEAD  |
| ⊕        | ⊕        | ⊕ INDICATES EXISTING SIGNAL HEAD OR EXISTING PEDESTRIAN SIGNAL HEAD  |
| ⊕        | ⊕        | * HARLEM AVENUE VILLAGE OF BRIDGEVIEW L.E.D. ILLUMINATED STREET NAME SIGN  |

\* THIS PLAN IS FOR THE PURPOSE OF INSTALLING L.E.D. ILLUMINATED STREET NAME SIGNS AS SHOWN PER PLAN. ALL OTHER EQUIPMENT SHALL BE DISREGARDED.

LOCATION NO. 2

FILE NAME = 07441_02-PLAN-SIGN-01 - IDOT P28	USER NAME =	DESIGNED - MRS	REVISED -
	CHECKED - PKB	REVISIONS -	
	DRAWN - RG	REVISIONS -	
	CHECKED - AG	REVISIONS -	
PLOT SCALE =			
PLOT DATE = 10-21-10			

STATE OF ILLINOIS  
DEPARTMENT OF TRANSPORTATION

HARLEM AVENUE BEAUTIFICATION  
CABLE PLAN, EMERGENCY VEHICLE PREEMPTION, PHASE DESIGNATION DIAGRAM, AND SCHEDULE OF QUANTITIES  
ILL ROUTE 43 (HARLEM AVE) AND 100TH PLACE

F.A.P. RTE.	SECTION	COUNTY	TOTAL SHEETS	SHEET NO.
348	07-00055-01-SG	COOK	55	24
CONTRACT NO. 63510				
SCALE: 1"=20'				
SHEET NO. 24 OF 55 SHEETS STA. TO STA.				
FED. ROAD DIST. NO. 1 ILLINOIS FED. AID PROJECT HPP-3482(001)				