

F.A. RTE.	SECTION	COUNTY	TOTAL SHEETS	SHEET NO.
08-00379-00-TL		KANE	36	1

35+11 = 46

**DESIGN DESIGNATION**

**TRAFFIC VOLUME =**  
 ADT 14000 WEST ON HUNTLEY ROAD  
 ADT 13200 EAST ON HUNTLEY ROAD  
 ADT 43200 NORTH ON RANDALL ROAD  
 ADT 44800 SOUTH ON RANDALL ROAD  
**POSTED SPEED LIMIT =**  
 50 MPH WEST ON HUNTLEY ROAD  
 40 MPH EAST ON HUNTLEY ROAD  
 50 MPH NORTH ON RANDALL ROAD  
 50 MPH SOUTH ON RANDALL ROAD

# PLANS FOR PROPOSED FEDERAL AID HIGHWAY

FAP 0336 RANDALL ROAD AND FAU 4066 HUNTLEY ROAD

CORPORATE BOULEVARD TO HUNTLEY ROAD / SQUARE BARN ROAD  
TO SLEEPY HOLLOW ROAD

**TRAFFIC SIGNALS / INTERCONNECT**  
**SECTION 08-00379-00-TL**  
**CMM-9003(147)**  
**KANE COUNTY**

FOR INDEX OF SHEETS, SEE SHEET NO. 2

**HIGHWAY STANDARDS**

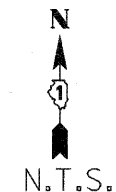
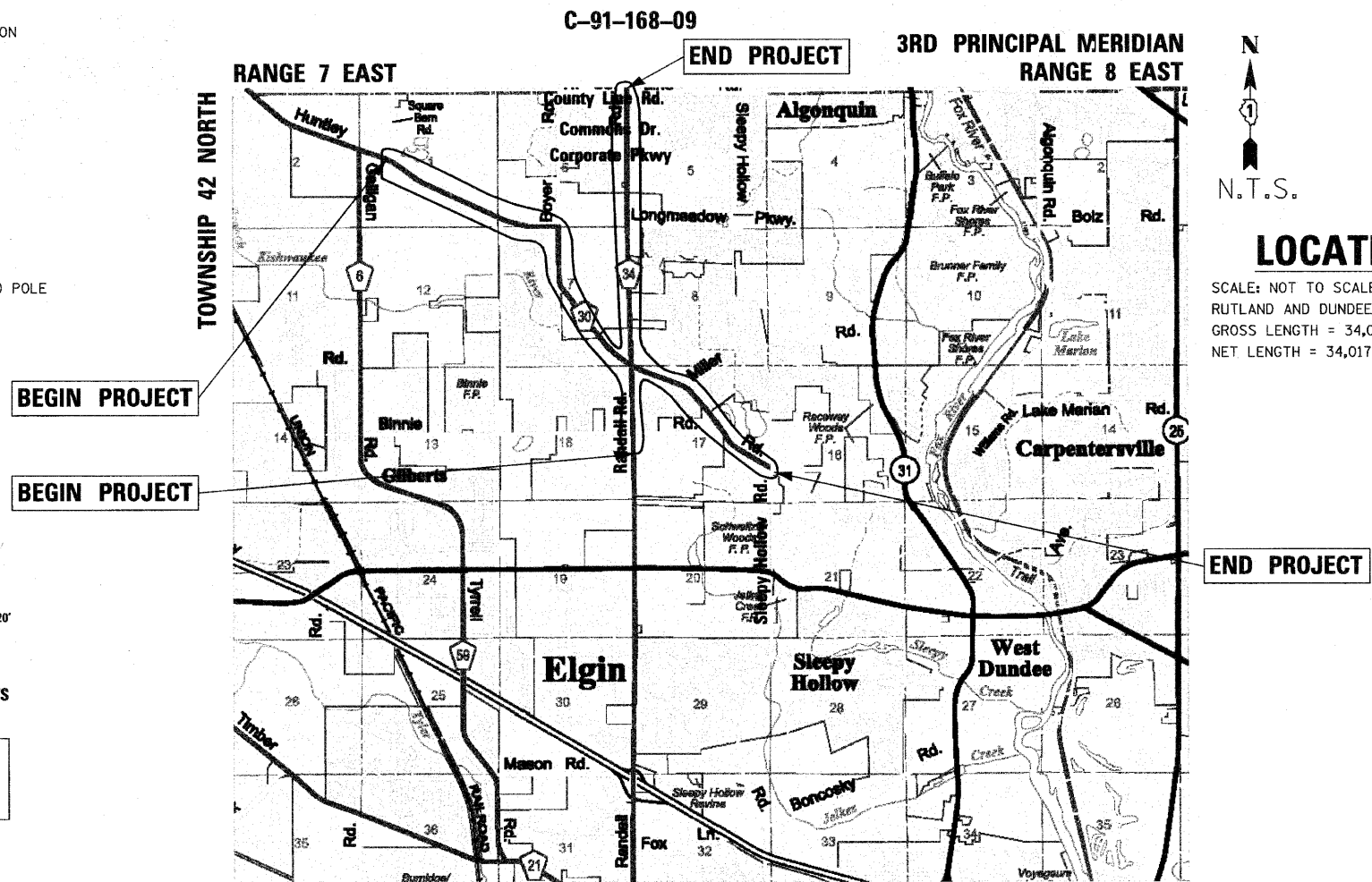
STD. No.	DESCRIPTION
000001-06	STANDARD SYMBOLS, ABBREVIATION AND PATTERNS
001006	DECIMAL OF AN INCH AND A FOOT
424001-05	CURB RAMPS FOR SIDEWALKS
606001-04	CONCRETE CURB TYPE B AND COMBINATION CONCRETE CURB AND GUTTER
606301-04	P.C. CONCRETE ISLANDS AND MEDIANS
606306-03	CORRUGATED P.C. CONCRETE MEDIAN
701006-03	OFF-RD OPERATIONS, 2L, 2W, 4.5m (15') TO 600mm (24") FROM PAVEMENT EDGE
701011-02	OFF-RD MOVING OPERATIONS, 2L, 2W, DAY ONLY
701101-02	OFF-RD OPERATIONS, MULTILANE, 4.5m (15') TO 600mm (24") FROM PAVEMENT EDGE
701301-04	LANE CLOSURE, 2L, 2W, SHORT TIME OPERATIONS
701501-06	URBAN LANE CLOSURE, 2L, 2W, UNDIVIDED
701601-07	URBAN LANE CLOSURE, MULTILANE 1W OR 2W NON-TRAVERSABLE MEDIAN
701606-07	URBAN LANE CLOSURE, MULTILANE 1W OR 2W MOUNTABLE MEDIAN
701701-07	URBAN LANE CLOSURE, MULTILANE INTERSECTION
701801-04	LANE CLOSURES MULTILANE, 1W OR 2W CROSSWALK OR SIDEWALK CLOSURE
701901-01	TRAFFIC CONTROL DEVICES
720001-01	SIGN PANEL MOUNTING DETAILS
814001-02	HANDHOLES
814006-02	DOUBLE HANDHOLES
857001-01	STANDARDS PHASE DESIGNATION DIAGRAMS AND PHASE SEQUENCES
862001-01	UNINTERRUPTABLE POWER SUPPLY (UPS)
877001-04	STEEL MAST ARM ASSEMBLY AND POLE 16' THROUGH 55'
877011-04	STEEL COMBINATION MAST ARM ASSEMBLY AND POLE 16' THROUGH 55'
878001-08	CONCRETE FOUNDATION DETAILS
880006-01	TRAFFIC SIGNAL MOUNTING DETAILS



LOCATION OF SECTION INDICATED THUS: - [Symbol] -  
 PRINTED BY THE AUTHORITY OF THE STATE OF ILLINOIS

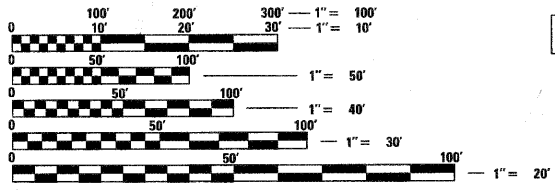
**PROJECT LOCATED  
IN VILLAGE OF  
CARPENTERSVILLE**

PROGRAM AND OFFICE ENGINEER: CAHRLS F. RIDDLE, P.E. (847) 705-4406 SCHAUMBURG, IL



**LOCATION MAP**

SCALE: NOT TO SCALE  
 RUTLAND AND DUNDEE TOWNSHIPS  
 GROSS LENGTH = 34,017.39 FEET (6.44 MILES)  
 NET LENGTH = 34,017.39 FEET (6.44 MILES)



FULL SIZE PLANS HAVE BEEN PREPARED USING STANDARD ENGINEERING SCALES. REDUCED SIZED PLANS WILL NOT CONFORM TO STANDARD SCALES. IN MAKING MEASUREMENTS ON REDUCED PLANS, THE ABOVE SCALES MAY BE USED.

J.U.L.I.E.  
 JOINT UTILITY LOCATION INFORMATION FOR EXCAVATION  
 1-800-892-0123 OR 811

**CONTRACT NO. 63520**

P.E. SEAL  
 H.W. LOCHNER, INC.  
 20 NORTH WACKER DRIVE, SUITE 1200  
 CHICAGO, IL 60606  
 (312) 372-3011 FAX: (312) 372-5974  
 SIGNED: [Signature] 11/20/10 EXPIRES: 11/19/2010 DATE

AGENCY RESPONSIBLE FOR LETTING

APPROVED: OCTOBER 18 2010  
 [Signature] COUNTY ENGINEER  
 KANE CO. LOCAL AGENCY POSITION

PASSED: NOVEMBER 5 2010  
 [Signature] DISTRICT #1 ENGINEER OF LOCAL ROADS & STREETS

RELEASING FOR BID  
 BASED ON LIMITED REVIEW: NOVEMBER 8, 2010  
 [Signature] DEPUTY DIRECTOR OF HIGHWAYS, REGION #1 ENGINEER