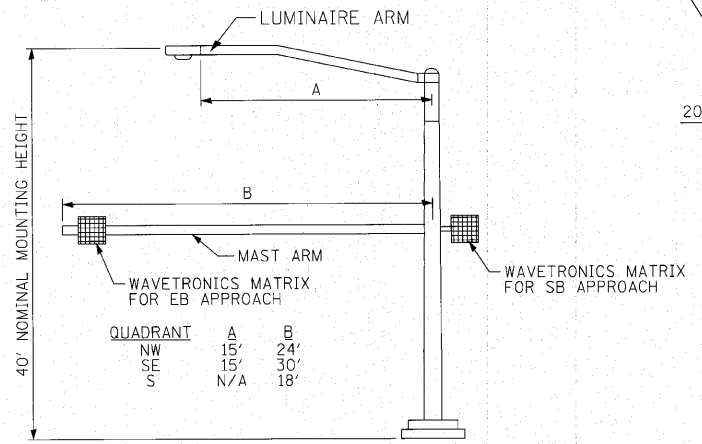


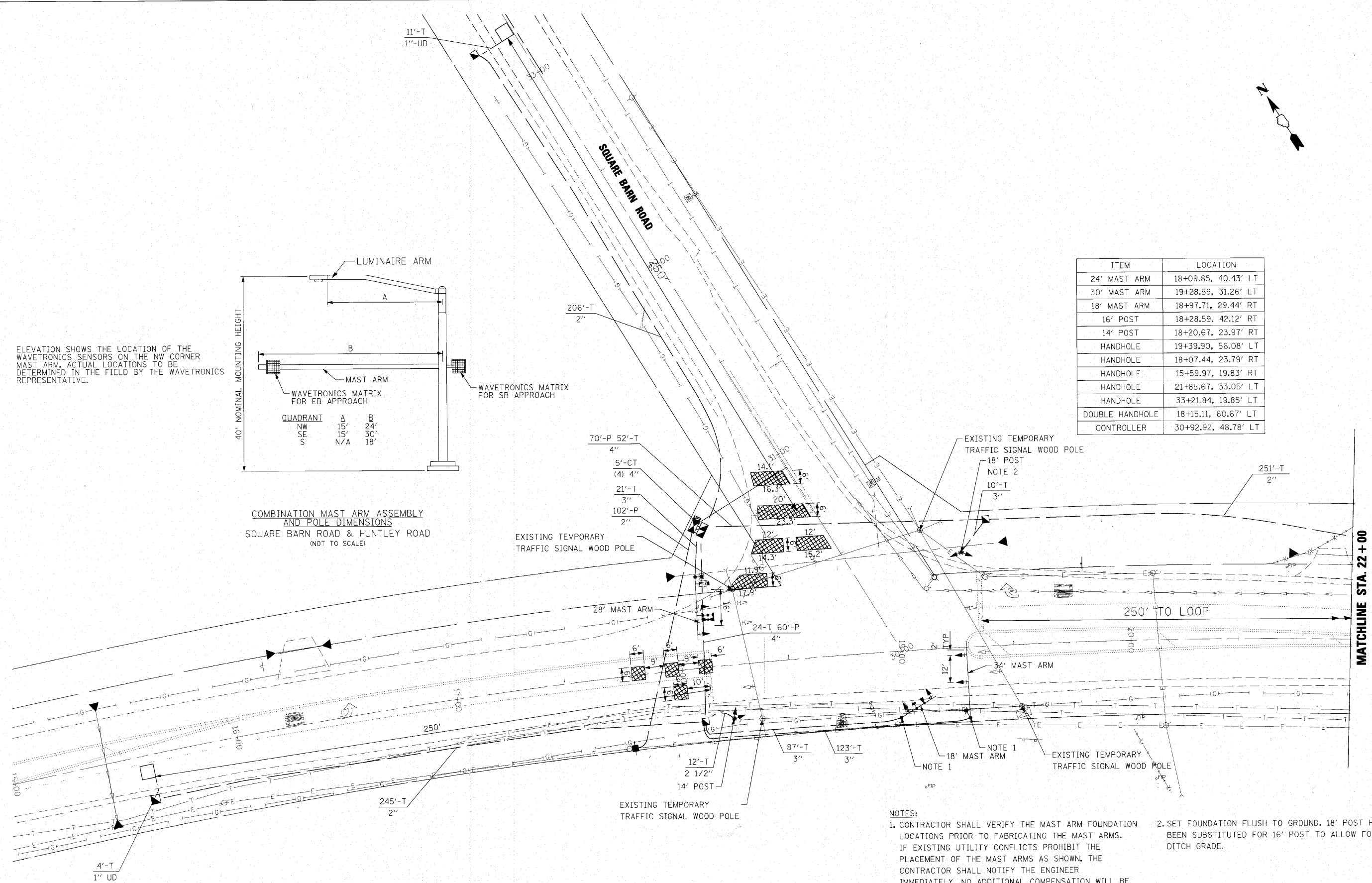


ELEVATION SHOWS THE LOCATION OF THE WAVETRONICS SENSORS ON THE NW CORNER MAST ARM. ACTUAL LOCATIONS TO BE DETERMINED IN THE FIELD BY THE WAVETRONICS REPRESENTATIVE.



COMBINATION MAST ARM ASSEMBLY AND POLE DIMENSIONS SQUARE BARN ROAD & HUNTLEY ROAD (NOT TO SCALE)

ITEM	LOCATION
24' MAST ARM	18+09.85, 40.43' LT
30' MAST ARM	19+28.59, 31.26' LT
18' MAST ARM	18+97.71, 29.44' RT
16' POST	18+28.59, 42.12' RT
14' POST	18+20.67, 23.97' RT
HANDHOLE	19+39.90, 56.08' LT
HANDHOLE	18+07.44, 23.79' RT
HANDHOLE	15+59.97, 19.83' RT
HANDHOLE	21+85.67, 33.05' LT
HANDHOLE	33+21.84, 19.85' LT
DOUBLE HANDHOLE	18+15.11, 60.67' LT
CONTROLLER	30+92.92, 48.78' LT



NOTES:

1. CONTRACTOR SHALL VERIFY THE MAST ARM FOUNDATION LOCATIONS PRIOR TO FABRICATING THE MAST ARMS. IF EXISTING UTILITY CONFLICTS PROHIBIT THE PLACEMENT OF THE MAST ARMS AS SHOWN, THE CONTRACTOR SHALL NOTIFY THE ENGINEER IMMEDIATELY. NO ADDITIONAL COMPENSATION WILL BE APPROVED FOR THIS INVESTIGATION.

2. SET FOUNDATION FLUSH TO GROUND. 18' POST HAS BEEN SUBSTITUTED FOR 16' POST TO ALLOW FOR THE DITCH GRADE.