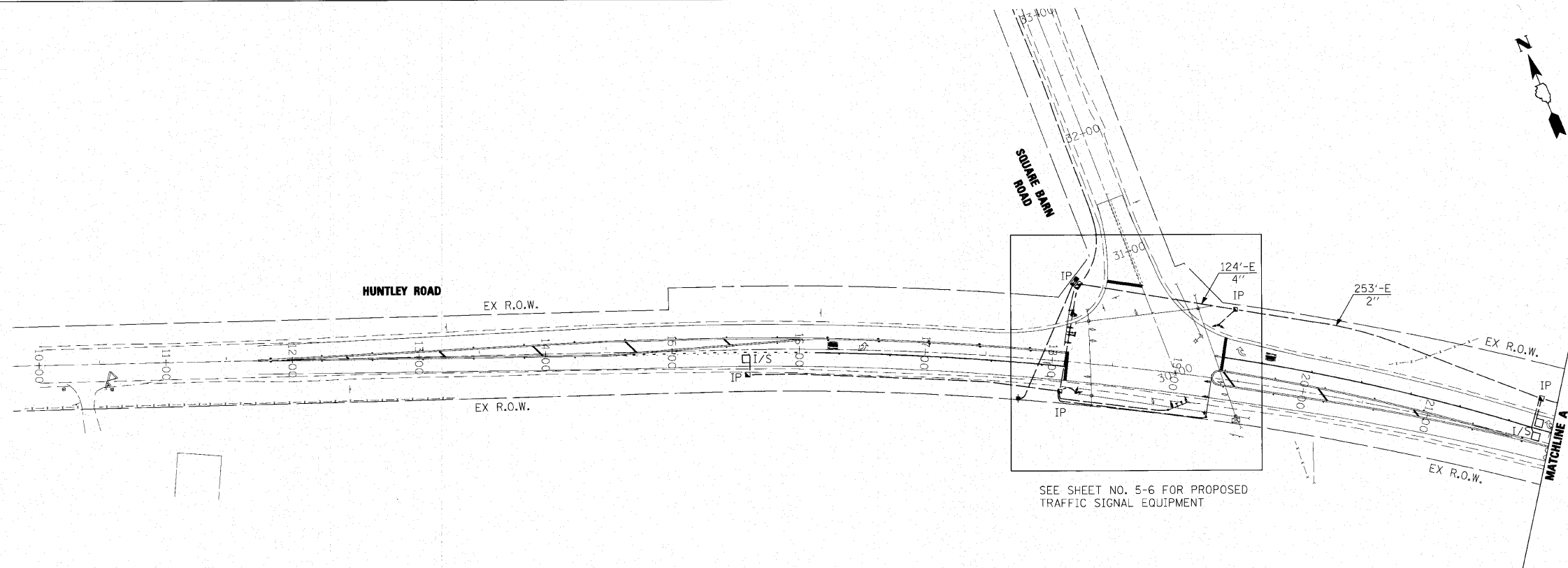
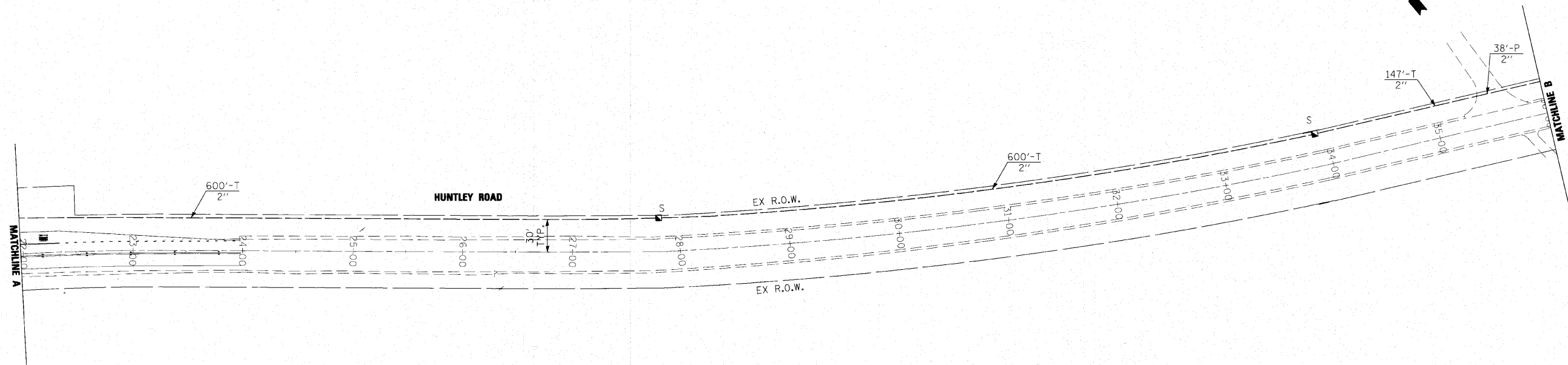


PLAN	SURVEYED	DATE
	PLOTTED	
	REVISIONS	
	REVISIONS CHECKED	
	CADD FILE NAME	
	NO.	

PROFILE	SURVEYED	DATE
	PLOTTED	
	REVISIONS	
	REVISIONS CHECKED	
	STRUCTURE NOTATIONS	
	NO.	



SEE SHEET NO. 5-6 FOR PROPOSED TRAFFIC SIGNAL EQUIPMENT



NOTE: NO PROJECT UTILITY ADJUSTMENTS ARE ANTICIPATED.
SEE SPECIAL PROVISION FOR UTILITY CONTACTS AS NEEDED.

FILE NAME #FILEL#	DESIGNED -	REVISED	KANE COUNTY DIVISION OF TRANSPORTATION	INTERCONNECT PLANS HUNTLEY ROAD		F.A. RTE.	SECTION	COUNTY	TOTAL SHEETS	SHEET NO.
	DRAWN -	REVISED -		SCALE: 1" = 50'		SHEET NO. 11 OF 36 SHEETS	08-00379-00-TL	KANE	36	11
	CHECKED -	REVISED -		STA.	TO STA.	CONTRACT NO. 63520		ILLINOIS FED. AID PROJECT CMM-90C31471		
	DATE -	REVISED -								