

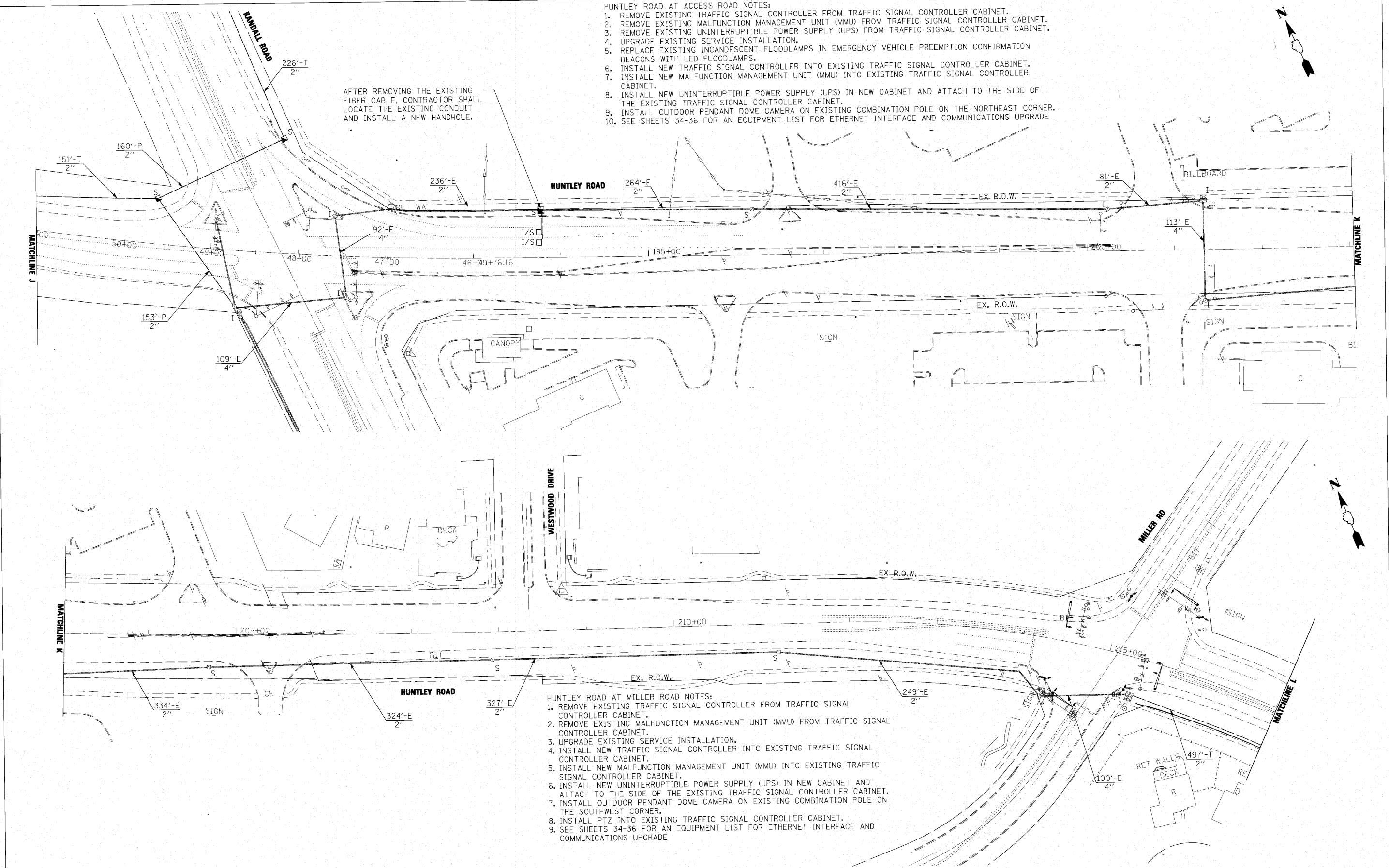
- HUNTLEY ROAD AT ACCESS ROAD NOTES:
1. REMOVE EXISTING TRAFFIC SIGNAL CONTROLLER FROM TRAFFIC SIGNAL CONTROLLER CABINET.
 2. REMOVE EXISTING MALFUNCTION MANAGEMENT UNIT (MMU) FROM TRAFFIC SIGNAL CONTROLLER CABINET.
 3. REMOVE EXISTING UNINTERRUPTIBLE POWER SUPPLY (UPS) FROM TRAFFIC SIGNAL CONTROLLER CABINET.
 4. UPGRADE EXISTING SERVICE INSTALLATION.
 5. REPLACE EXISTING INCANDESCENT FLOODLAMPS IN EMERGENCY VEHICLE PREEMPTION CONFIRMATION BEACONS WITH LED FLOODLAMPS.
 6. INSTALL NEW TRAFFIC SIGNAL CONTROLLER INTO EXISTING TRAFFIC SIGNAL CONTROLLER CABINET.
 7. INSTALL NEW MALFUNCTION MANAGEMENT UNIT (MMU) INTO EXISTING TRAFFIC SIGNAL CONTROLLER CABINET.
 8. INSTALL NEW UNINTERRUPTIBLE POWER SUPPLY (UPS) IN NEW CABINET AND ATTACH TO THE SIDE OF THE EXISTING TRAFFIC SIGNAL CONTROLLER CABINET.
 9. INSTALL OUTDOOR PENDANT DOME CAMERA ON EXISTING COMBINATION POLE ON THE NORTHEAST CORNER.
 10. SEE SHEETS 34-36 FOR AN EQUIPMENT LIST FOR ETHERNET INTERFACE AND COMMUNICATIONS UPGRADE

AFTER REMOVING THE EXISTING FIBER CABLE, CONTRACTOR SHALL LOCATE THE EXISTING CONDUIT AND INSTALL A NEW HANDHOLE.

- HUNTLEY ROAD AT MILLER ROAD NOTES:
1. REMOVE EXISTING TRAFFIC SIGNAL CONTROLLER FROM TRAFFIC SIGNAL CONTROLLER CABINET.
 2. REMOVE EXISTING MALFUNCTION MANAGEMENT UNIT (MMU) FROM TRAFFIC SIGNAL CONTROLLER CABINET.
 3. UPGRADE EXISTING SERVICE INSTALLATION.
 4. INSTALL NEW TRAFFIC SIGNAL CONTROLLER INTO EXISTING TRAFFIC SIGNAL CONTROLLER CABINET.
 5. INSTALL NEW MALFUNCTION MANAGEMENT UNIT (MMU) INTO EXISTING TRAFFIC SIGNAL CONTROLLER CABINET.
 6. INSTALL NEW UNINTERRUPTIBLE POWER SUPPLY (UPS) IN NEW CABINET AND ATTACH TO THE SIDE OF THE EXISTING TRAFFIC SIGNAL CONTROLLER CABINET.
 7. INSTALL OUTDOOR PENDANT DOME CAMERA ON EXISTING COMBINATION POLE ON THE SOUTHWEST CORNER.
 8. INSTALL PTZ INTO EXISTING TRAFFIC SIGNAL CONTROLLER CABINET.
 9. SEE SHEETS 34-36 FOR AN EQUIPMENT LIST FOR ETHERNET INTERFACE AND COMMUNICATIONS UPGRADE

DATE	BY	REVIEWED
		PLOTTED
		NOTED
		NO. 1
		NO. 2
		NO. 3
		NO. 4
		NO. 5
		NO. 6
		NO. 7
		NO. 8
		NO. 9
		NO. 10
		NO. 11
		NO. 12
		NO. 13
		NO. 14
		NO. 15
		NO. 16
		NO. 17
		NO. 18
		NO. 19
		NO. 20
		NO. 21
		NO. 22
		NO. 23
		NO. 24
		NO. 25
		NO. 26
		NO. 27
		NO. 28
		NO. 29
		NO. 30
		NO. 31
		NO. 32
		NO. 33
		NO. 34
		NO. 35
		NO. 36
		NO. 37
		NO. 38
		NO. 39
		NO. 40
		NO. 41
		NO. 42
		NO. 43
		NO. 44
		NO. 45
		NO. 46
		NO. 47
		NO. 48
		NO. 49
		NO. 50
		NO. 51
		NO. 52
		NO. 53
		NO. 54
		NO. 55
		NO. 56
		NO. 57
		NO. 58
		NO. 59
		NO. 60
		NO. 61
		NO. 62
		NO. 63
		NO. 64
		NO. 65
		NO. 66
		NO. 67
		NO. 68
		NO. 69
		NO. 70
		NO. 71
		NO. 72
		NO. 73
		NO. 74
		NO. 75
		NO. 76
		NO. 77
		NO. 78
		NO. 79
		NO. 80
		NO. 81
		NO. 82
		NO. 83
		NO. 84
		NO. 85
		NO. 86
		NO. 87
		NO. 88
		NO. 89
		NO. 90
		NO. 91
		NO. 92
		NO. 93
		NO. 94
		NO. 95
		NO. 96
		NO. 97
		NO. 98
		NO. 99
		NO. 100

DATE	BY	REVIEWED
		PLOTTED
		NOTED
		NO. 1
		NO. 2
		NO. 3
		NO. 4
		NO. 5
		NO. 6
		NO. 7
		NO. 8
		NO. 9
		NO. 10
		NO. 11
		NO. 12
		NO. 13
		NO. 14
		NO. 15
		NO. 16
		NO. 17
		NO. 18
		NO. 19
		NO. 20
		NO. 21
		NO. 22
		NO. 23
		NO. 24
		NO. 25
		NO. 26
		NO. 27
		NO. 28
		NO. 29
		NO. 30
		NO. 31
		NO. 32
		NO. 33
		NO. 34
		NO. 35
		NO. 36
		NO. 37
		NO. 38
		NO. 39
		NO. 40
		NO. 41
		NO. 42
		NO. 43
		NO. 44
		NO. 45
		NO. 46
		NO. 47
		NO. 48
		NO. 49
		NO. 50
		NO. 51
		NO. 52
		NO. 53
		NO. 54
		NO. 55
		NO. 56
		NO. 57
		NO. 58
		NO. 59
		NO. 60
		NO. 61
		NO. 62
		NO. 63
		NO. 64
		NO. 65
		NO. 66
		NO. 67
		NO. 68
		NO. 69
		NO. 70
		NO. 71
		NO. 72
		NO. 73
		NO. 74
		NO. 75
		NO. 76
		NO. 77
		NO. 78
		NO. 79
		NO. 80
		NO. 81
		NO. 82
		NO. 83
		NO. 84
		NO. 85
		NO. 86
		NO. 87
		NO. 88
		NO. 89
		NO. 90
		NO. 91
		NO. 92
		NO. 93
		NO. 94
		NO. 95
		NO. 96
		NO. 97
		NO. 98
		NO. 99
		NO. 100



FILE NAME #FILE#	DESIGNED -	REVISED -	KANE COUNTY DIVISION OF TRANSPORTATION	INTERCONNECT PLANS HUNTLEY ROAD		F.A. RTE.	SECTION	COUNTY	TOTAL SHEETS	SHEET NO.	
	DRAWN -	REVISED -		SCALE: 1" = 50'		SHEET NO. 16 OF 36 SHEETS	STA.	TO STA.	KANE	36	16
	CHECKED -	REVISED -		CONTRACT NO. 63520							
	DATE -	REVISED -		ILLINOIS FED. AID PROJECT CMM-9003(147)							