

F.A.U. RTE.	SECTION	COUNTY	TOTAL SHEETS	SHEET NO.
2332	03-14185-02-BR	KANE	73	1
FED. ROAD DIST. NO. 1	ILLINOIS	CONTRACT NO. 63521		

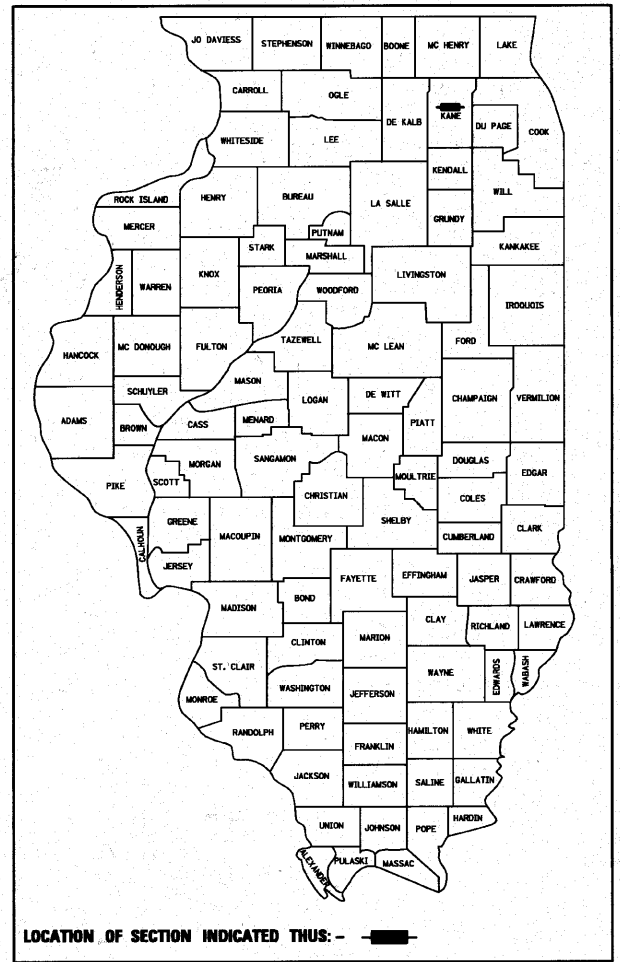
+1 = 74

STATE OF ILLINOIS
DEPARTMENT OF TRANSPORTATION
DIVISION OF HIGHWAYS
**PLANS FOR PROPOSED
FEDERAL AID HIGHWAY**

FOR INDEX OF SHEETS, SEE SHEET NO. 2

PROJECT LOCATED IN ST. CHARLES TOWNSHIP

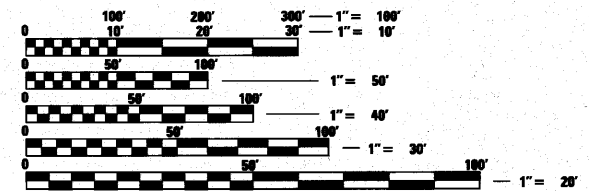
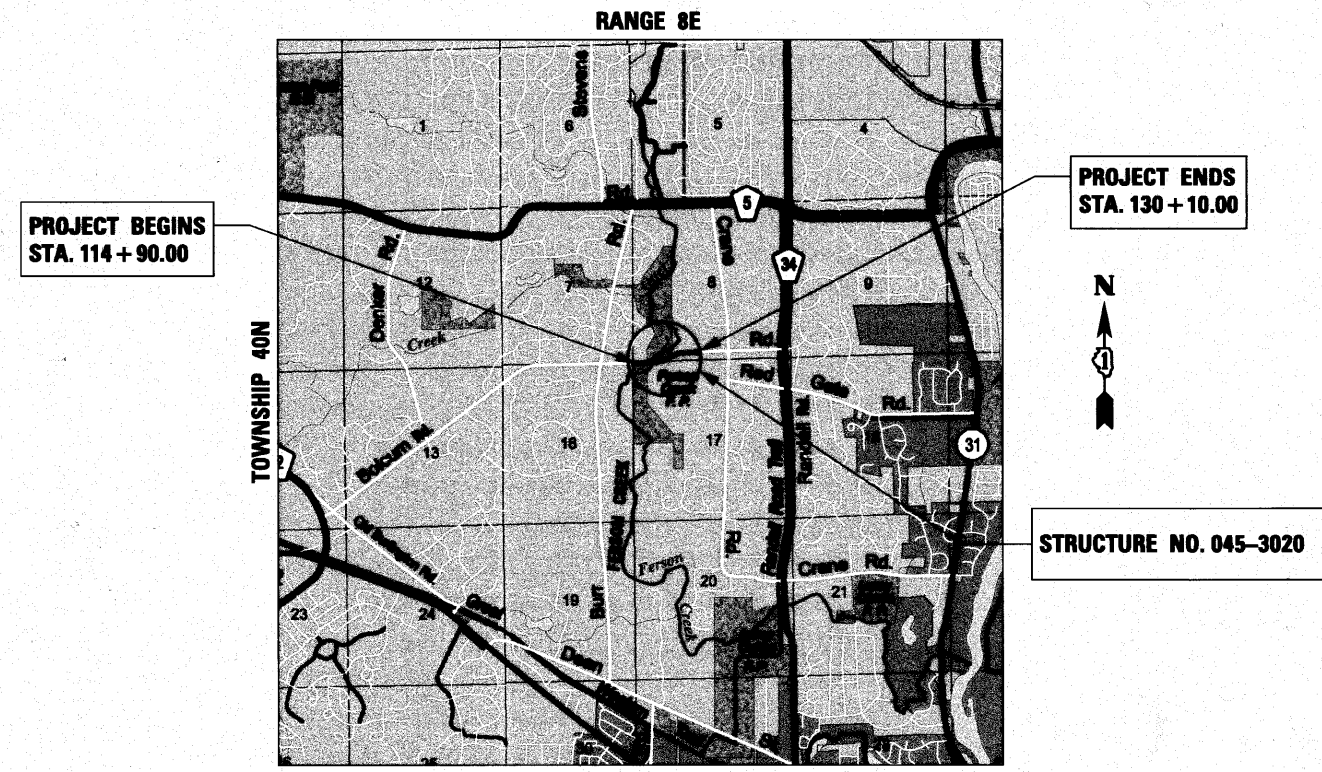
F.A.U. RTE 2332 (BOLCUM ROAD)
OVER FERSON CREEK
SECTION 03-14185-02-BR
PROJECT BHOS-00D(639)
BRIDGE REMOVAL AND REPLACEMENT
JOB NO. C-91-140-04
KANE COUNTY



TRAFFIC DATA

2006 ADT = 4,650
2030 ADT = 14,500
DESIGN SPEED: 50 MPH

DESIGN DESIGNATION:
1,000 (30) MAJOR COLLECTOR (HMA-20)



FULL SIZE PLANS HAVE BEEN PREPARED USING STANDARD ENGINEERING SCALES. REDUCED SIZED PLANS WILL NOT CONFORM TO STANDARD SCALES. IN MAKING MEASUREMENTS ON REDUCED PLANS, THE ABOVE SCALES MAY BE USED.

J.U.L.I.E.
JOINT UTILITY LOCATION INFORMATION FOR EXCAVATION
1-800-892-0123
OR 811

PROJECT NET AND GROSS LENGTH = 1520 FT (0.288 MILE)
PROJECT LOCATED IN:
PART OF SECTIONS 8 AND 17 IN TOWNSHIP 40N, RANGE 8E, OF THE THIRD PRINCIPAL MERIDIAN,
KANE COUNTY, ILLINOIS

STATE OF ILLINOIS
DEPARTMENT OF TRANSPORTATION
DIVISION OF HIGHWAYS

APPROVED *October 20, 2010*
Ronald Johnson
ST. CHARLES TOWNSHIP

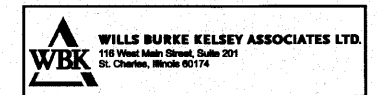
PASSED *NOVEMBER 5, 2010*
C. H. Heston
DISTRICT 1 ENGINEER OF LOCAL ROADS & STREETS

RELEASING FOR BID
BASED ON LIMITED
REVIEW *November 8, 2010*
Diana M. O'Keefe
DEPUTY DIRECTOR OF HIGHWAYS, REGION 1 ENGINEER

PROGRAM AND OFFICE ENGINEER: CHARLES F. RIDDLE, P.E. (847) 705-4406 SCHAUMBURG, IL



October 20, 2010
Kevin M. Anderson
KEVIN M. ANDERSON
ILLINOIS REG. PROFESSIONAL ENGINEER NO. 062-055652
EXPIRATION DATE 11-30-2011



**PRINTED BY THE AUTHORITY
OF THE STATE OF ILLINOIS**

CONTRACT NO. 63521