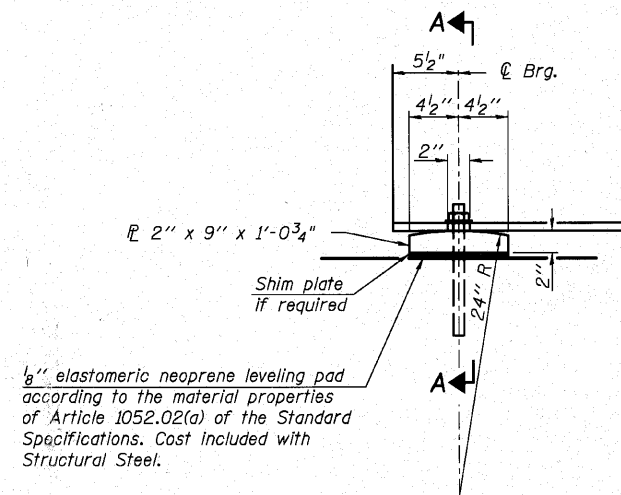


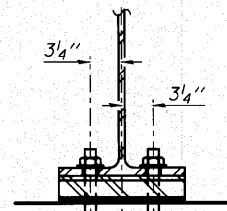
FILE NAME = P:\CIBEL WEST Projects\2009\045-3020\045-3020-01\Structural\Drawings\045-3020-01-11-Struct-Steel-Details.dwg



**ELEVATION AT ABUTMENT**

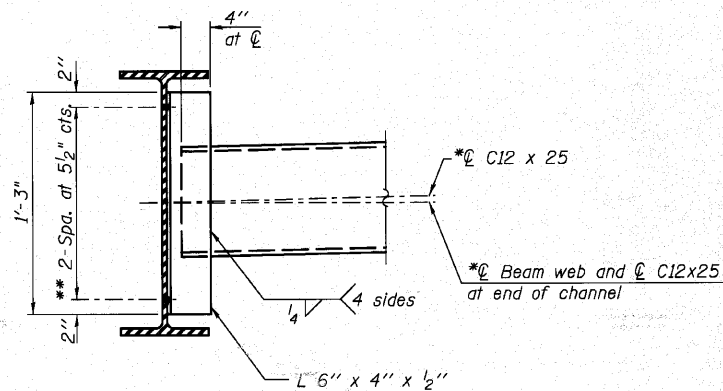
1/2" elastomeric neoprene leveling pad according to the material properties of Article 1052.02(a) of the Standard Specifications. Cost included with Structural Steel.

1"  $\phi$  x 12" anchor bolts with 2 1/4" x 2 1/4" x 5/16"  $\mathbb{R}$  washer under nut. 1 3/8" x 2" slotted hole in flange. 1 1/2"  $\phi$  holes in bearing plate.



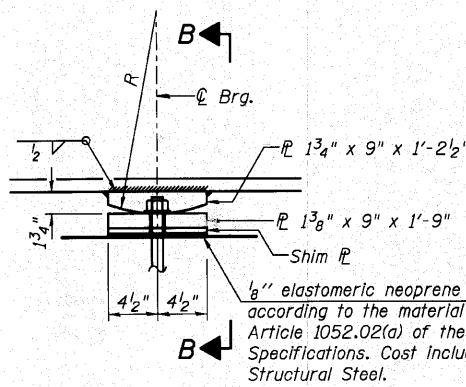
**SECTION A-A**

**FIXED BEARING**  
(10 Required)



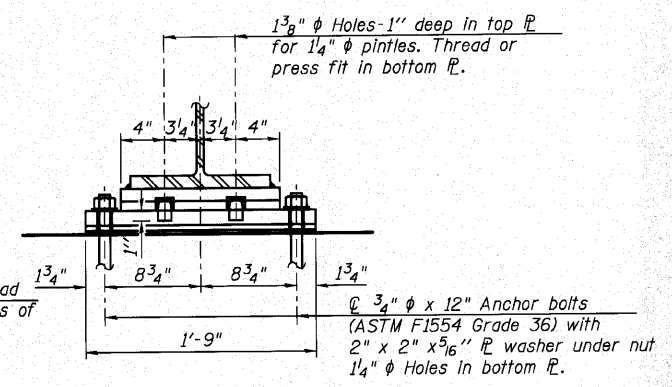
**INTERIOR DIAPHRAGM**  
(28 Required)

Note:  
Two hardened washers required for each set of oversized holes.  
\*C12x30 is permitted to facilitate material acquisition. Calculated weight of structural steel is based on the lighter section.  
The alternate, if utilized, shall be provided at no additional cost to the Department.  
\*\*3/4"  $\phi$  HS bolts, 1 5/16"  $\phi$  holes

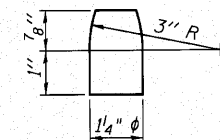


**ELEVATION AT PIER**

**FIXED BEARING**  
(5 Required)



**SECTION B-B**



**PINTLE**

NOTES:  
Anchor bolts shall be ASTM F1554 all-thread (or an Engineer-approved alternate material) of the grade(s) and diameter(s) specified. ASTM A307 Grade C anchor bolts may be used in lieu of ASTM F1554 Grade 36 (Fy=36ksi). The corresponding specified grade of AASHTO M314 anchor bolts may be used in lieu of ASTM F1554.

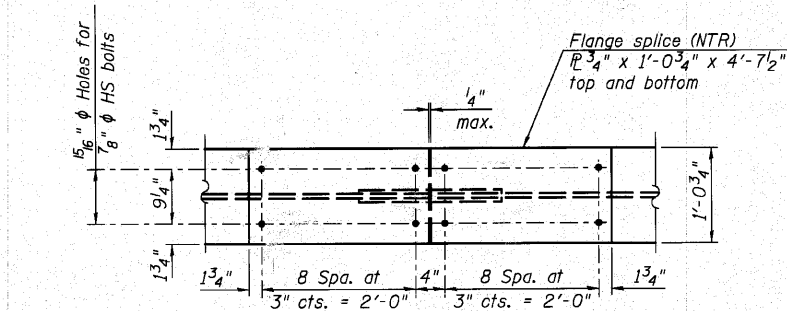
Anchor bolts at fixed bearings may be either cast in place or installed in holes drilled after the supported member is in place.

Drilled and set anchor bolts shall be installed according to Article 521.06 of the Standard Specifications.

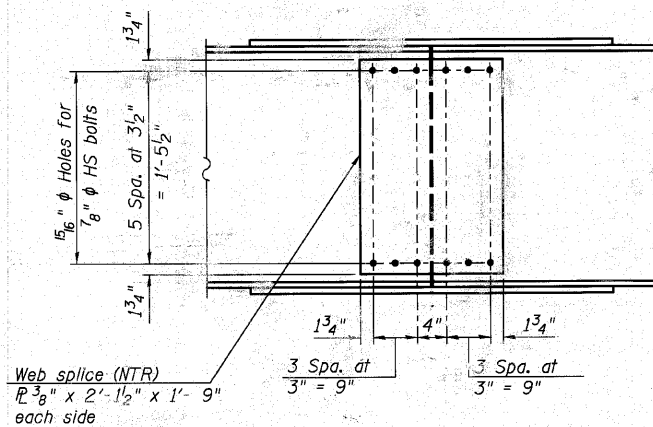
Two 1/2 in. adjusting shims shall be provided for each bearing location in addition to all other plates or shims and placed as shown on bearing details.

**BILL OF MATERIAL**

Item	Unit	Total
Anchor Bolts, 1"	Each	30



**PLAN**



**ELEVATION**

**FIELD SPLICE DETAIL**  
(5 Required)

**STRUCTURAL STEEL DETAILS**  
**STRUCTURE NO. 045-3020**

DESIGNED - AEU
CHECKED - DLS
DRAWN - AWH
CHECKED - AEU

**WILLS BURKE KELSEY ASSOCIATES LTD.**  
116 West Main Street, Suite 201  
St. Charles, Illinois 60174  
(630) 443-7755

SHEET NO. 14 21 SHEETS	F.A.U.	SECTION	COUNTY	TOTAL SHEETS	SHEET NO.
	2332	03-14185-02-BR	KANE	73	38
CONTRACT NO. 63521					
FED. ROAD DIST. NO.		ILLINOIS	FED. AID PROJECT		