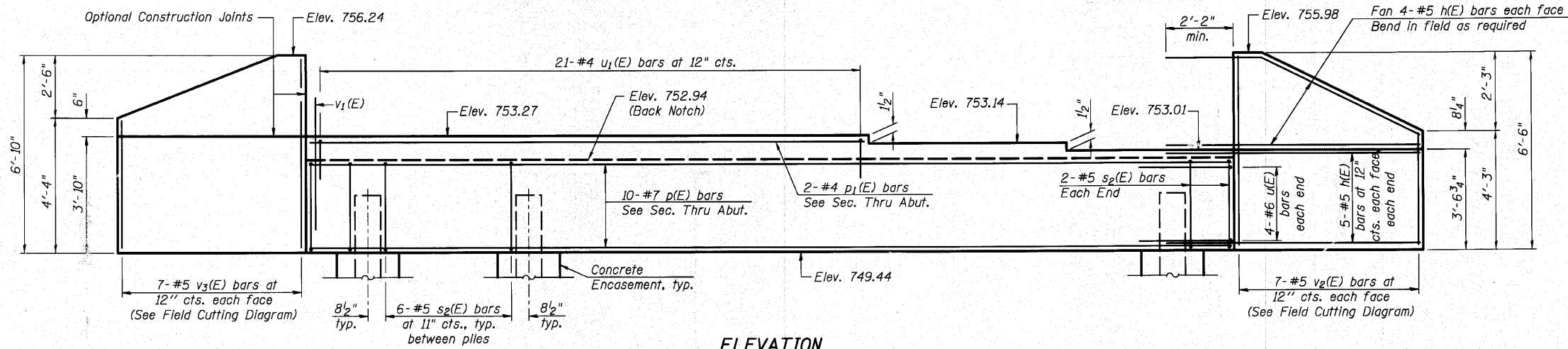
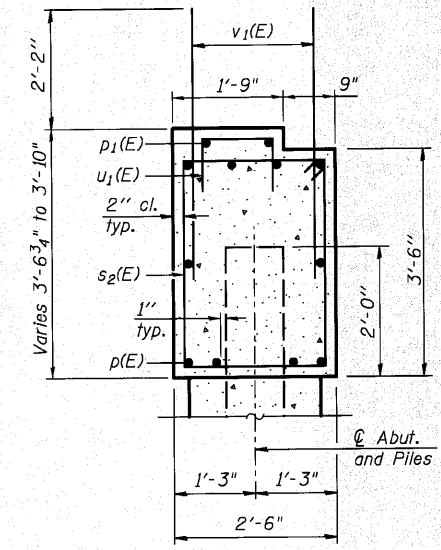


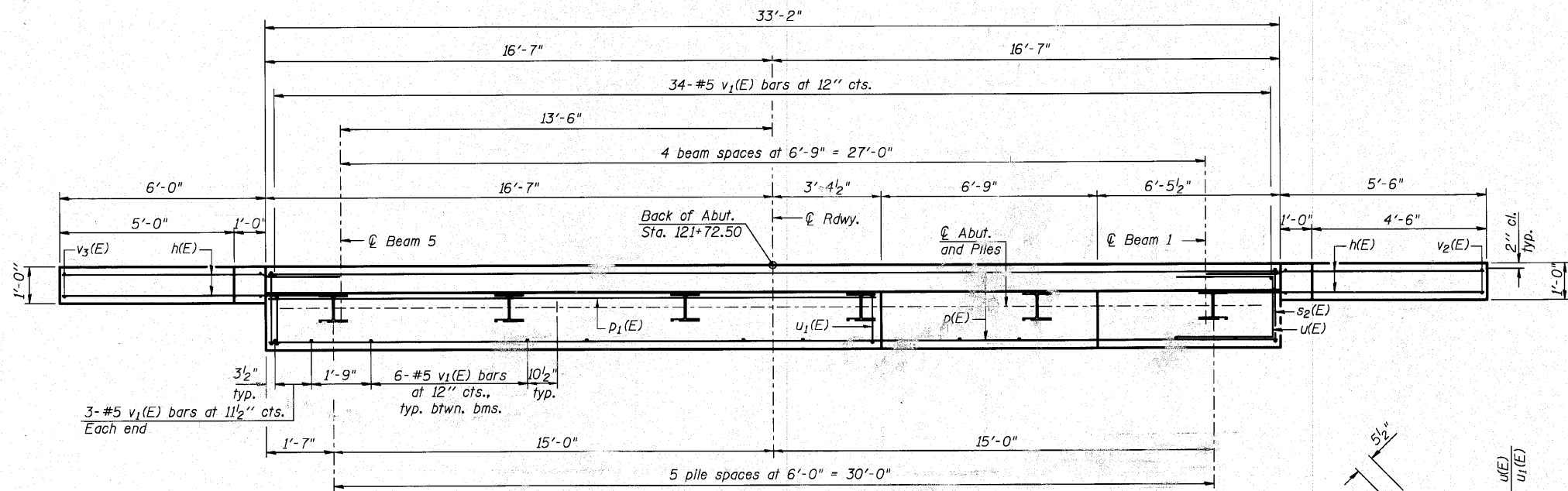
Notes:  
Pour steps monolithically with cap.



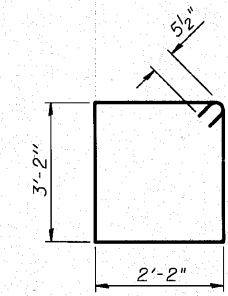
**ELEVATION**



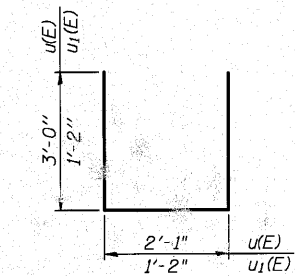
**SEC. THRU ABUT.**



**PLAN**



**BAR s2(E)**



**BARS u(E) & u1(E)**

**BILL OF MATERIAL**

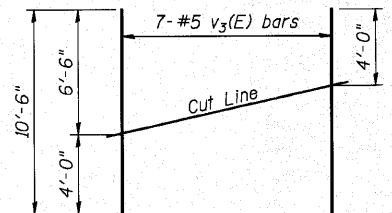
Bar	No.	Size	Length	Shape
h(E)	36	#5	8'-0"	—
p(E)	10	#7	32'-10"	—
p1(E)	2	#4	19'-7"	—
s2(E)	34	#5	11'-7"	□
u(E)	8	#6	8'-1"	—
u1(E)	21	#4	3'-6"	—
v1(E)	64	#5	4'-4"	—
v2(E)	7	#5	10'-1"	—
v3(E)	7	#5	10'-6"	—
Structure Excavation	Cu. Yd.		92	
Concrete Structures	Cu. Yd.		13.7	
Concrete Encasement	Cu. Yd.		2.1	
Reinforcement Bars, Epoxy Coated	Pound		1,990	
Furnishing Steel Piles, HP 12x53	Foot		125	
Driving Piles	Foot		125	
Test Pile Steel HP 12x53	Each		1	
Pile Shoes	Each		6	

For details of piles and Concrete Encasement, see sheet 18 of 21.

**WEST ABUTMENT DETAILS  
STRUCTURE NO. 045-3020**

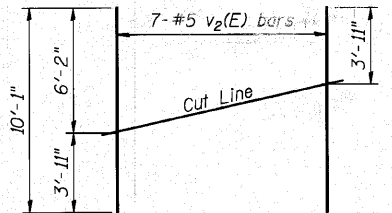
**PILE DATA**

Type: Steel HP 12x53 w/ Pile Shoes  
Nominal Required Bearing: 419  
Factored Resistance Available: 209  
Est. Length: 25'  
No. Production Piles: 5  
No. Test Piles: 1



**FIELD CUTTING DIAGRAM**

Order v3(E) bars full length. Cut as shown and use remainder of bars in opposite face.



**FIELD CUTTING DIAGRAM**

Order v2(E) bars full length. Cut as shown and use remainder of bars in opposite face.

DESIGNED - AEU
CHECKED - DLS
DRAWN - AWH
CHECKED - AEU

**WILLS BURKE KELSEY ASSOCIATES LTD.**  
116 West Main Street, Suite 201  
St. Charles, Illinois 60174  
(830) 443-7755

SHEET NO. 15 21 SHEETS	F.A.U.	SECTION	COUNTY	TOTAL SHEETS	SHEET NO.
	2332	03-14185-02-BR	KANE	73	39
FED. ROAD DIST. NO.			ILLINOIS	FED. AID PROJECT	
CONTRACT NO. 63521					

FILE NAME = P:\CIBEL\WEST\Projects\045-3020\Drawings\Structural\Drawings\045-3020-02-01.dwg; PLOT CREATION DATE = 10/19/2010