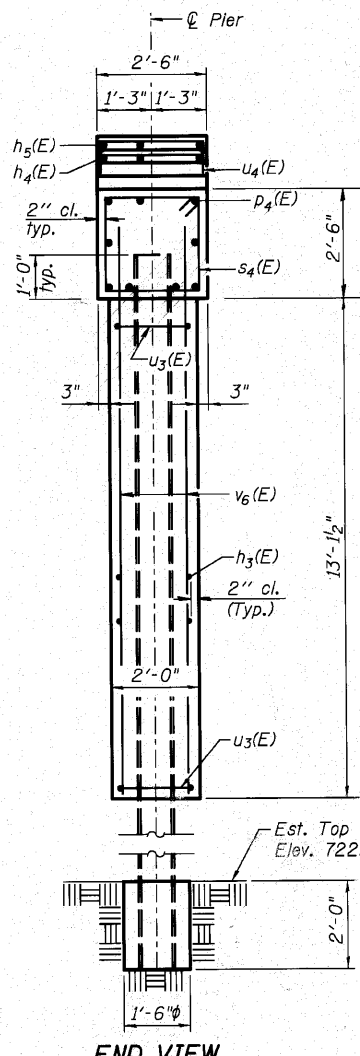


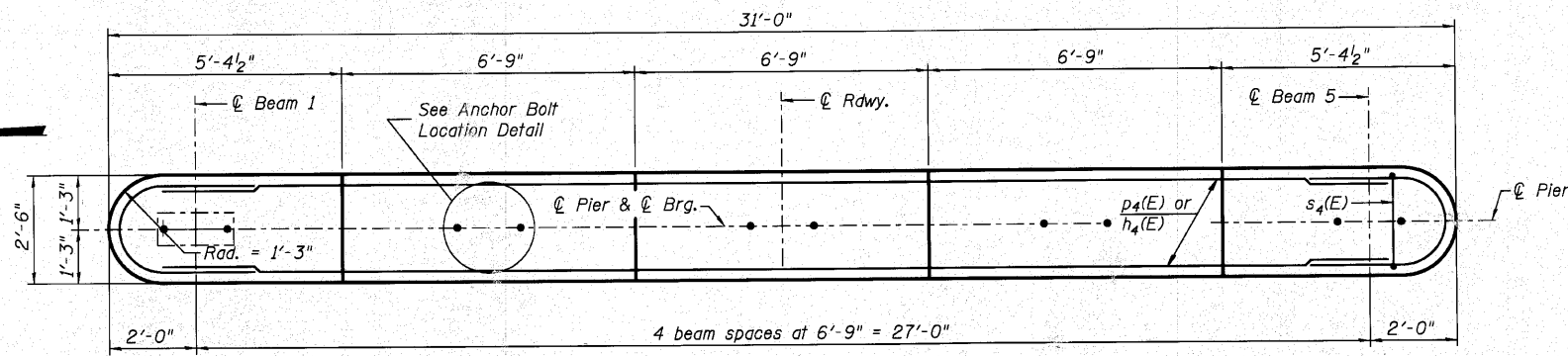
Notes:
 Space reinforcement in cap to miss anchor bolts.
 Pour steps monolithically with cap.
 For details of piles, see sheet 18 of 21.

PILE DATA

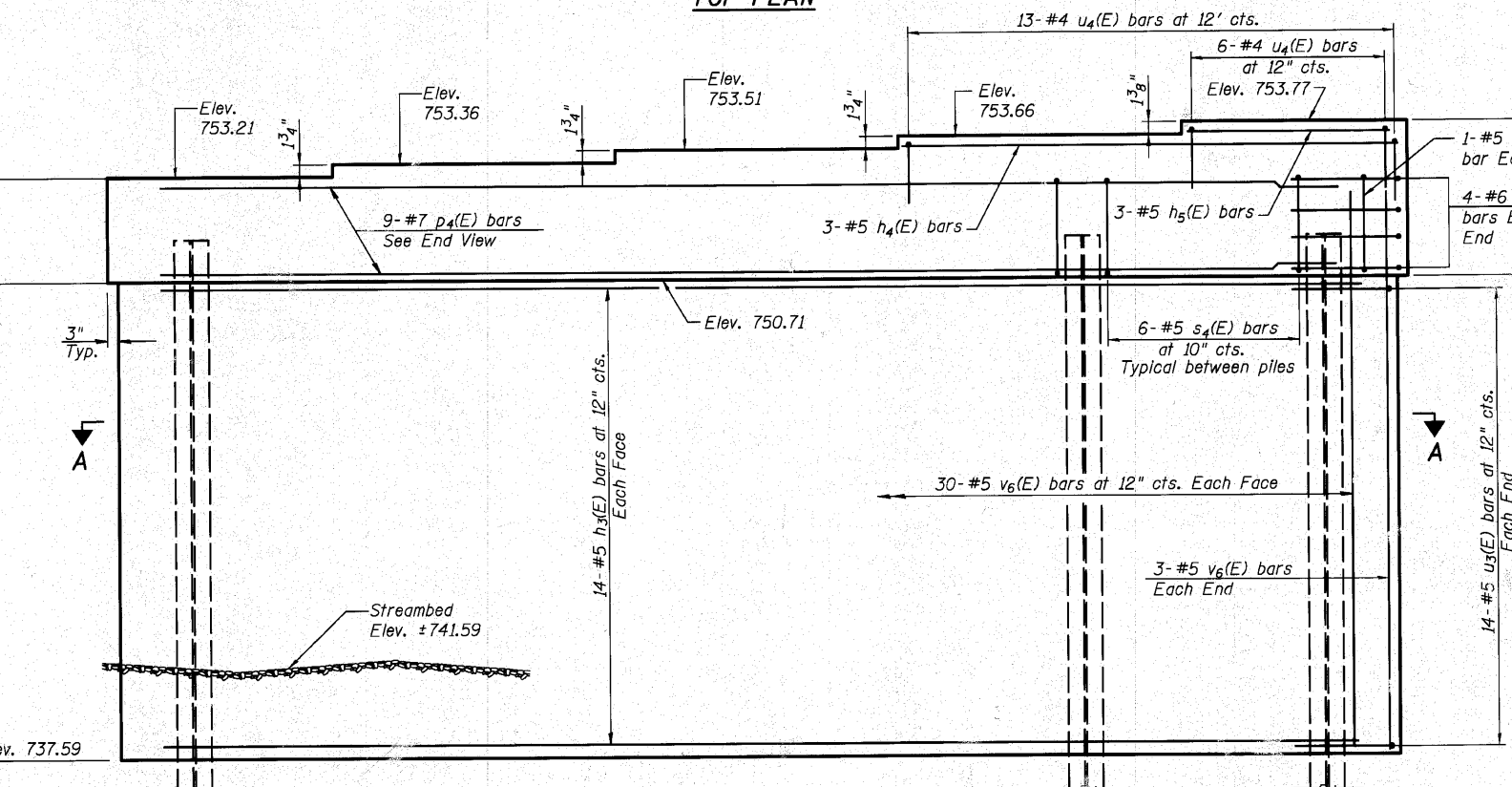
Type: Steel HP 14x73
 Nominal Required Bearing: Set in Rock
 Factored Resistance Available: 259 kips
 Est. Length: 32'
 No. Production Piles: 6
 No. Test Piles: 0
 Estimated Top of Rock: 722.00
 Rock Socket Depth: 2'
 Rock Socket Diameter: 1'-6"



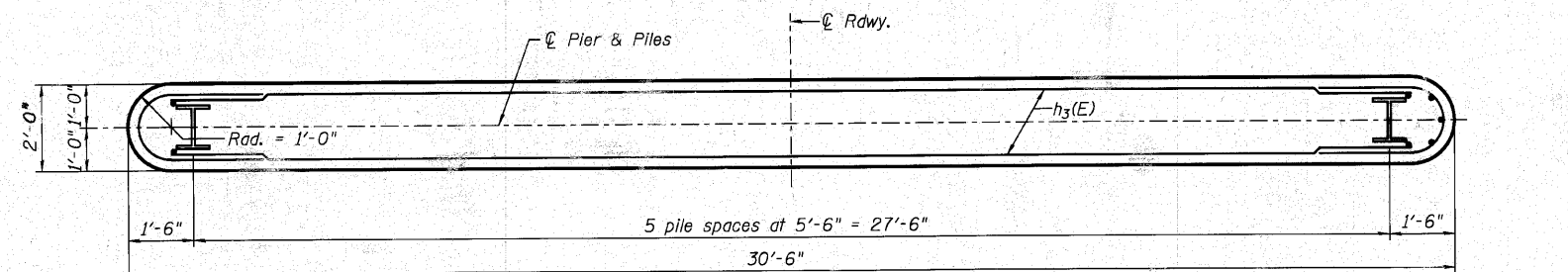
END VIEW



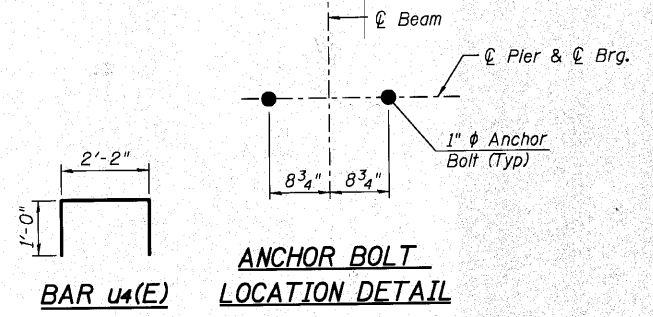
TOP PLAN



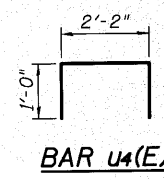
ELEVATION
(Looking East)



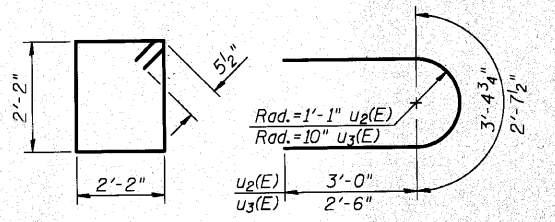
SECTION A-A



ANCHOR BOLT LOCATION DETAIL



BAR u4(E)



BAR s4(E)

BARS u2(E) & u3(E)

BILL OF MATERIAL

Bar	No.	Size	Length	Shape
h3(E)	28	#5	28'-6"	—
h4(E)	3	#5	10'-8"	—
h5(E)	3	#5	4'-0"	—
p4(E)	8	#7	28'-6"	—
s4(E)	32	#5	9'-7"	□
u2(E)	8	#6	9'-5"	U
u3(E)	28	#5	7'-8"	U
u4(E)	19	#4	4'-2"	U
v6(E)	66	#5	15'-2"	—
Cofferdam Excavation			Cu. Yd.	58
Cofferdam, Location 1			Each	1
Concrete Structures			Cu. Yd.	36.4
Seal Coat Concrete			Cu. Yd.	24.8
Reinforcement Bars, Epoxy Coated			Pound	3,100
Furnishing Steel Piles, HP 14x73			Foot	192
Setting Piles in Rock			Each	6

PIER DETAILS
STRUCTURE NO. 045-3020

DESIGNED - AEU
CHECKED - DLS
DRAWN - AWH
CHECKED - AEU

WILLS BURKE KELSEY ASSOCIATES LTD.
 116 West Main Street, Suite 201
 St. Charles, Illinois 60174
 (630) 443-7755

SHEET NO. 17	F.A.U.	SECTION	COUNTY	TOTAL SHEETS	SHEET NO.
21 SHEETS	2332	03-14185-02-BR	KANE	73	41
FED. ROAD DIST. NO.			ILLINOIS	FED. AID PROJECT	
CONTRACT NO. 63521					

FILE NAME: P:\CIBEL WEST Projects\2009\045-3020\045-3020-01.dwg PLOT CREATION DATE: 10/19/2018