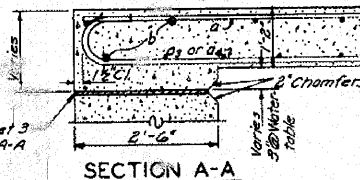
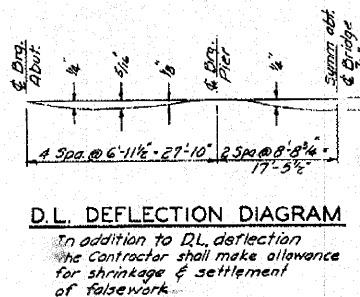
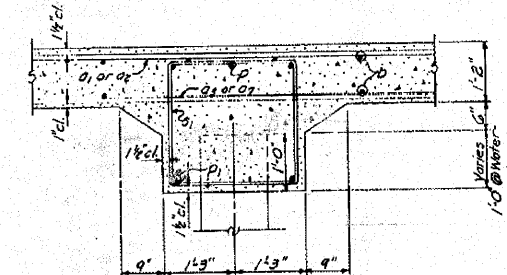
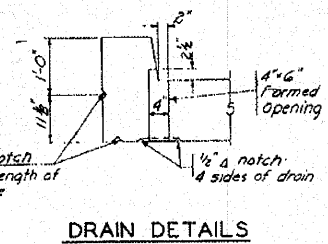
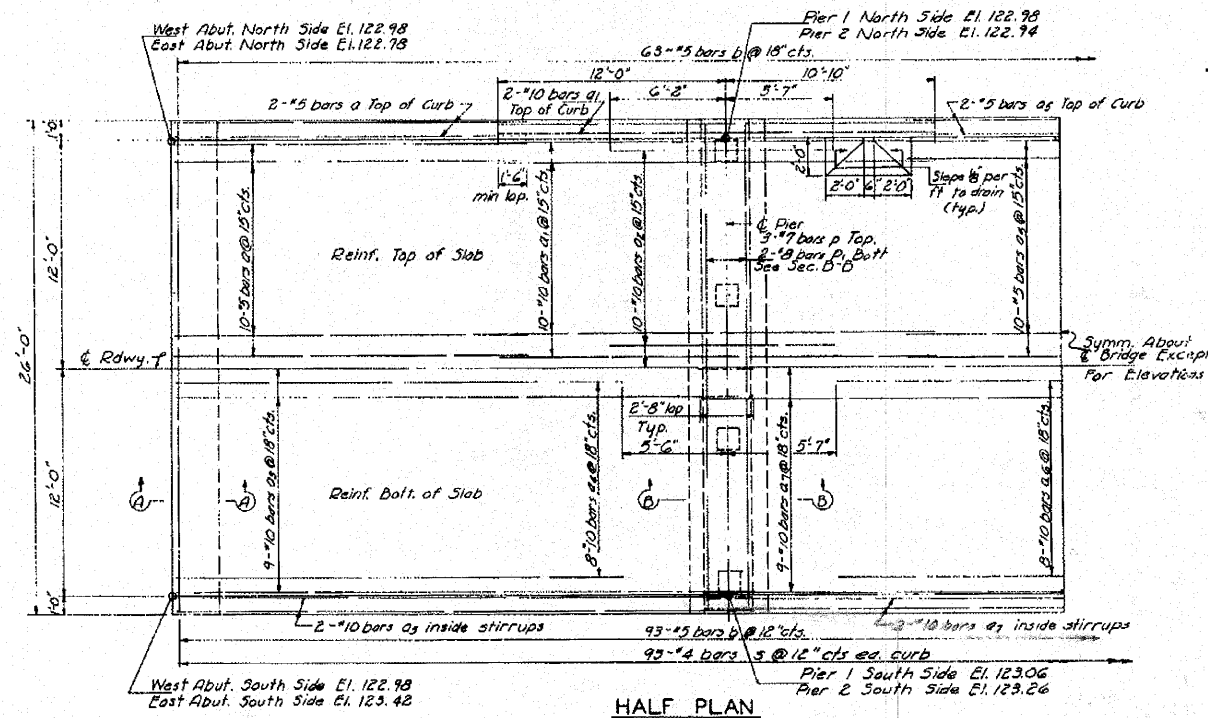
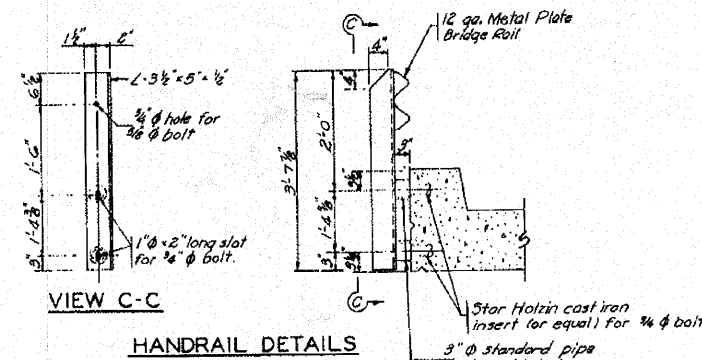
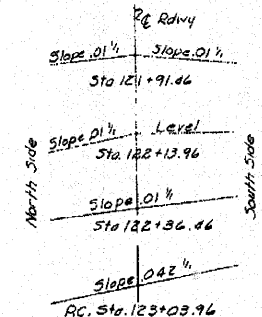
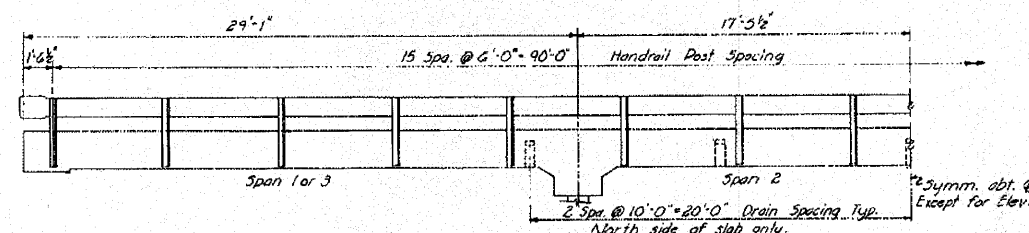
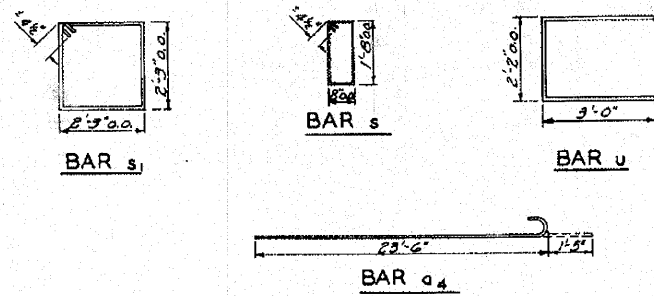
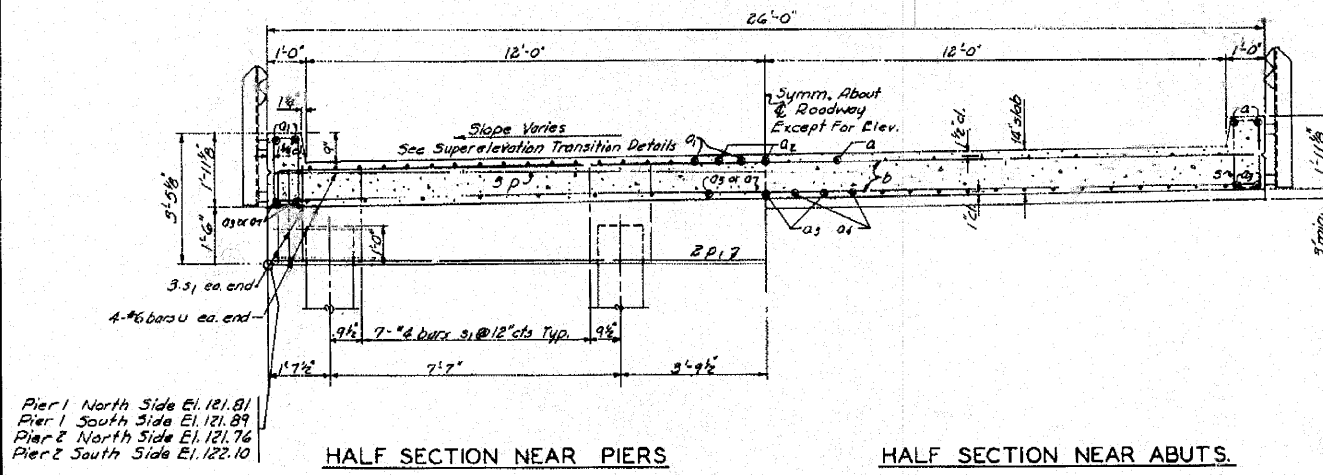


STATE AID ROUTE NO.	COUNTY	SECTION	TOTAL SHEETS	SHEET NO.
73	KANE	185B-MFT	7	47



BILL OF MATERIAL SUPERSTRUCTURE & PIERS

Bar	No.	Size	Length	Shape
a	46	#5	10'-6"	
a1	46	#10	22'-10"	
a2	40	#10	11'-9"	
a3	42	#10	30'-4"	
a4	32	#10	24'-11"	
a5	23	#5	12'-5"	
a6	16	#10	23'-9"	
a7	21	#10	27'-7"	
b	156	#5	25'-8"	
p	6	#7	25'-8"	
p1	4	#8	25'-8"	
s	186	#4	5'-5"	□
s1	54	#4	9'-9"	□
u	16	#6	8'-8"	□
Class X Concrete				Cu. Yds. 119.2
Reinforcement Bars				Lbs. 27,750
Metal Plate Bridge Rail Lin.P.				180
Precast Concrete Piles Lin.P.				175
Test Piles (Concrete)				Ca 1



PILE DATA

Type	14" Precast Concrete
No.	84
Capacity	34-Ton
Est. Length	25'

(See sheet 5 for details of the conc. piles)
Includes one test pile

SLAB CORYN BRIDGE SEC. 185 B-MFT STA. 122+2500 S.A. ROUTE 73 KANE COUNTY

HANSON, COLLINS & RICE CONSULTING ENGINEERS

DESIGNED BY V.F.S. CHECKED BY R.D.C.
DRAWN BY A.R.C. DATE 2-24-59 NO. D-58-66

FOR REFERENCE ONLY

FILE NAME = P:\CIBBEL WEST Projects\2009\09-0882_Bolton PHN\Civil\Drawings\KANSAS\185B.MFT.dgn



USER NAME = #USER#	DESIGNED -	REVISED -
PLOT SCALE =	DRAWN -	REVISED -
PLOT DATE = 10/21/2010	CHECKED -	REVISED -
	DATE - 10/22/10	REVISED -

STATE OF ILLINOIS DEPARTMENT OF TRANSPORTATION

EXISTING STRUCTURE PLANS FOR REFERENCE ONLY	
SCALE:	SHEET NO. 47 OF 73 SHEETS STA. TO STA.

F.A. RTE.	SECTION	COUNTY	TOTAL SHEETS	SHEET NO.
2332	03-14185-02-BR	KANE	73	47
FED. ROAD DIST. NO. 1 ILLINOIS FED. AID PROJECT			CONTRACT NO. 63521	