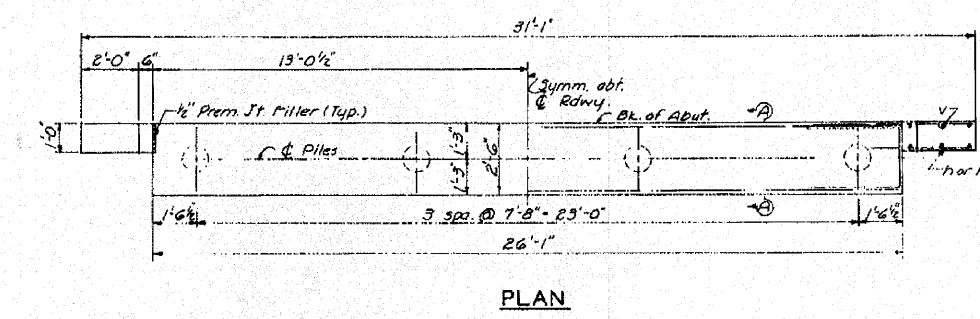
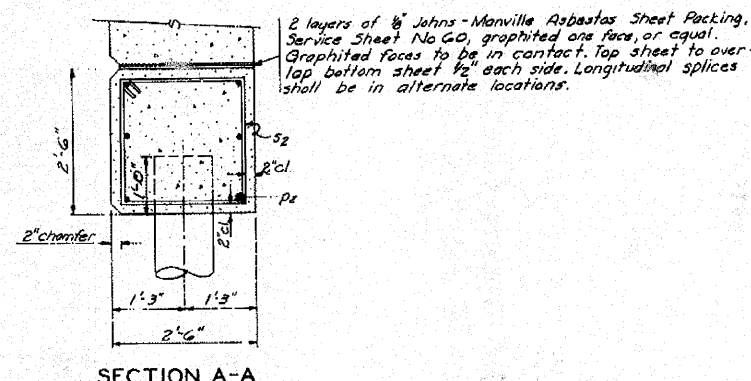


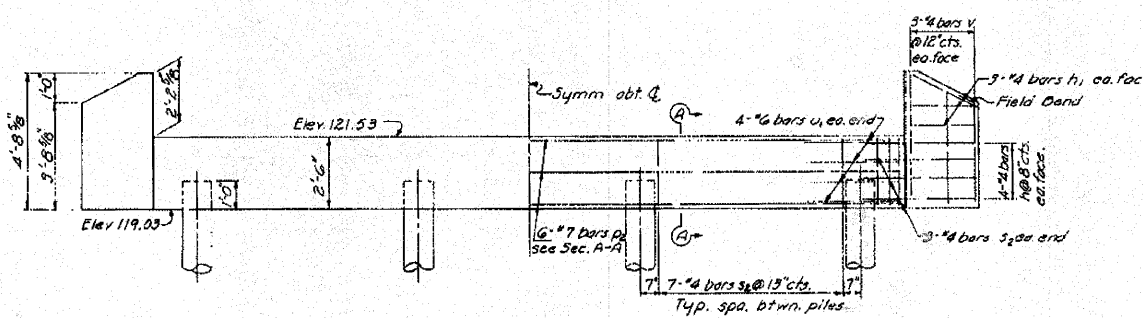
STATE AID PROJECT NO.	COUNTY	SECTION	SHEET NO.	TOTAL SHEETS
73	KANE	185B-MFT	7	7



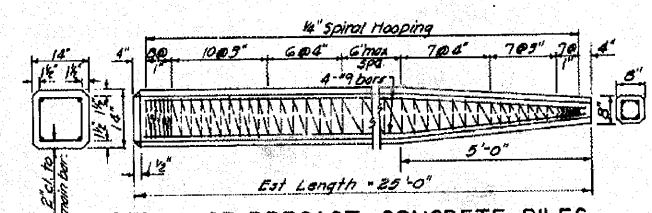
PLAN



SECTION A-A

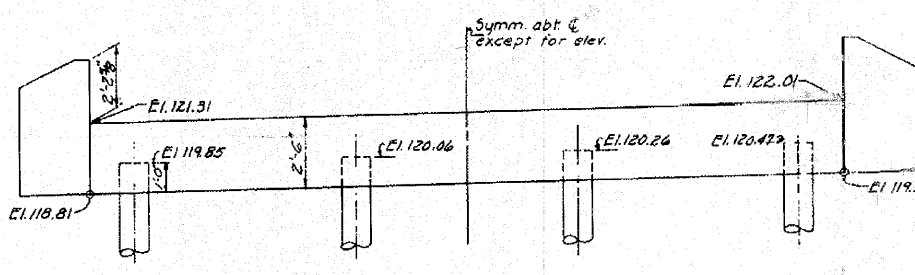


ELEVATION WEST ABUTMENT

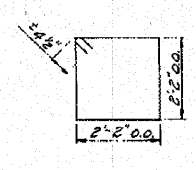


DETAIL OF PRECAST CONCRETE PILES

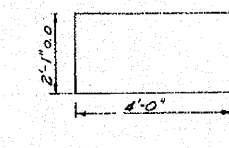
Note to Contractor:  
For pile lengths up to 45' use two slings placed at a distance of 0.21L from each end. On piles longer than 45' use three slings placed at 0.12L from each end and at mid-point of pile.



ELEVATION EAST ABUTMENT



BAR s2



BAR u1

BILL OF MATERIAL-ABUTMENTS

Bar	No	Size	Length	Shape
h	32	#4	9'-9"	
h1	24	#4	8'-9"	
P2	12	#7	25'-9"	
s2	36	#4	9'-5"	□
u1	16	#6	10'-1"	□
v	24	#4	4'-0"	
Class X Concrete		Cu Yds	13.7	
Reinforcement Bars		Lbs	1390	
Creosoted Piles		Lin.Ft	160	
Test Piles		Eq.	1	

PILE DATA

Type	Creosoted
No. Req'd	8
Min Capacity	19 Ton
Est. Length	20'

ABUTMENTS  
CORYN BRIDGE  
SEC. 185 B-MFT  
STA. 122+25.00  
S.A. ROUTE 73  
KANE COUNTY

HANSON, COLLINS & RICE  
CONSULTING ENGINEERS

DESIGNED: V.F.S. CHECKED: R.O.C.  
DRAWN: A.F.F. DATE: 2-24-59 No. B-58-44

SHEET 3 OF 3

FOR REFERENCE ONLY

FILE NAME = P:\CIBBEL WEST Projects\2009\01-0882\_Bolcum\_Plan\Drawn\Ngn\Sheet\KST\TDR.dgn

**WBK** WILLS BURKE KELSEY ASSOCIATES LTD.  
110 West Main Street, Suite 201  
St. Charles, Illinois 60114

USER NAME = *USER*	DESIGNED -	REVISED -
	DRAWN -	REVISED -
PLOT SCALE =	CHECKED -	REVISED -
PLOT DATE = 10/21/2010	DATE = 10/22/10	REVISED -

STATE OF ILLINOIS  
DEPARTMENT OF TRANSPORTATION

EXISTING STRUCTURE PLANS  
FOR REFERENCE ONLY

SCALE: SHEET NO. 48 OF 73 SHEETS STA. TO STA.

F.A. RTE.	SECTION	COUNTY	TOTAL SHEETS	SHEET NO.
2332	03-14185-02-BR	KANE	73	48
CONTRACT NO. 63521				
FED. ROAD DIST. NO. 1 ILLINOIS FED. AID PROJECT				