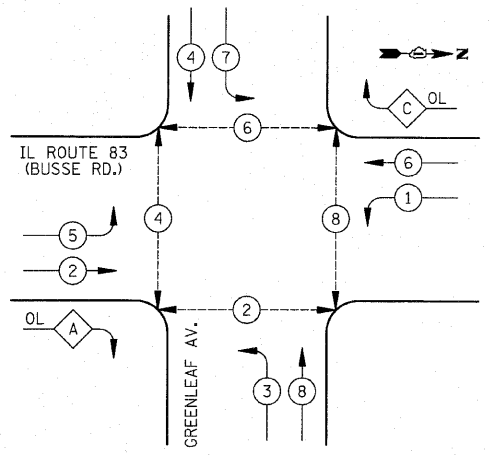


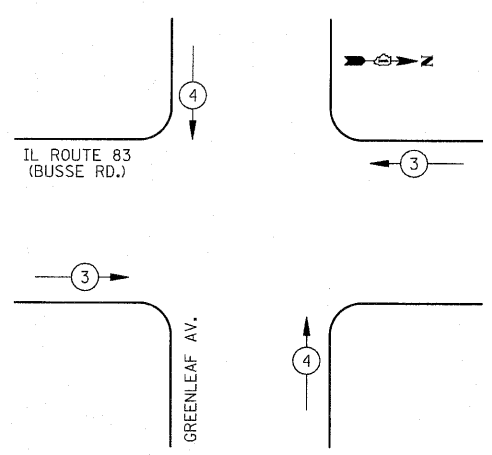
DATE: _____ BY: _____
 SURVIVED _____
 PLAN NOTE BOOK _____
 NO. _____
 ALIGNED CHECKED _____
 P.T.O. OF FILE NAME _____

DATE: _____ BY: _____
 SURVIVED _____
 PROFILE NOTE BOOK _____
 NO. _____
 GRADES CHECKED _____
 B.M. NOTED _____
 STRUCTURE NOTATIONS CHECKED _____

PROPOSED CONTROLLER SEQUENCE



PROPOSED EMERGENCY VEHICLE PREEMPTION SEQUENCE



LEGEND

- DUAL ENTRY PHASE
- SINGLE ENTRY PHASE
- OVERLAP
- PEDESTRIAN PHASE
- NUMBER REFERS TO ASSOCIATED PHASE

PROPOSED VEHICLE PREEMPTORS	
EMERGENCY VEHICLE PREEMPTOR	3 4
MOVEMENT	

RIGHT TURN OVERLAP PHASE DESIGNATION

OVERLAP LETTER	PERMISSIVE PHASE	PROTECTED PHASE
A	= 2 + 3	
C	= 6 + 7	

SCHEDULE OF QUANTITIES

PAY ITEM	UNIT	QNTY.
SIGN PANEL - TYPE 1	SQ FT	32
SIGN PANEL - TYPE 2	SQ FT	25
CONDUIT IN TRENCH, 2" DIA., GALVANIZED STEEL	FOOT	536
CONDUIT IN TRENCH, 2 1/2" DIA., GALVANIZED STEEL	FOOT	302
CONDUIT IN TRENCH, 3" DIA., GALVANIZED STEEL	FOOT	106
CONDUIT IN TRENCH, 4" DIA., GALVANIZED STEEL	FOOT	112
CONDUIT PUSHED, 2" DIA., GALVANIZED STEEL	FOOT	323
CONDUIT PUSHED, 2 1/2" DIA., GALVANIZED STEEL	FOOT	75
CONDUIT PUSHED, 4" DIA., GALVANIZED STEEL	FOOT	566
HANDHOLE	EACH	4
HEAVY-DUTY HANDHOLE	EACH	4
DOUBLE HANDHOLE	EACH	3
TRENCH AND BACKFILL FOR ELECTRICAL WORK	FOOT	1000
FULL-ACTUATED CONTROLLER AND TYPE IV CABINET, SPECIAL	EACH	1
TRANSCEIVER - FIBER OPTIC	EACH	1
ELECTRIC CABLE IN CONDUIT, SIGNAL NO. 14 2C	FOOT	1543
ELECTRIC CABLE IN CONDUIT, SIGNAL NO. 14 3C	FOOT	2334
ELECTRIC CABLE IN CONDUIT, SIGNAL NO. 14 5C	FOOT	2311
ELECTRIC CABLE IN CONDUIT, SIGNAL NO. 14 7C	FOOT	2800
ELECTRIC CABLE IN CONDUIT, LEAD-IN, NO. 14 1 PAIR	FOOT	3841
ELECTRIC CABLE IN CONDUIT, SERVICE, NO. 6 2C	FOOT	44
TRAFFIC SIGNAL POST, GALVANIZED STEEL 10 FT.	EACH	3
TRAFFIC SIGNAL POST, GALVANIZED STEEL 16 FT.	EACH	2
TRAFFIC SIGNAL POST, GALVANIZED STEEL 18 FT.	EACH	1
STEEL MAST ARM ASSEMBLY AND POLE, 28 FT.	EACH	1
STEEL MAST ARM ASSEMBLY AND POLE, 36 FT.	EACH	1
STEEL MAST ARM ASSEMBLY AND POLE, 42 FT.	EACH	1
STEEL MAST ARM ASSEMBLY AND POLE, 46 FT.	EACH	1
STEEL MAST ARM ASSEMBLY AND POLE, 56 FT.	EACH	2
CONCRETE FOUNDATION, TYPE A	FOOT	24
CONCRETE FOUNDATION, TYPE C	FOOT	4
CONCRETE FOUNDATION, TYPE E 30-INCH DIAMETER	FOOT	30
CONCRETE FOUNDATION, TYPE E 36-INCH DIAMETER	FOOT	30
CONCRETE FOUNDATION, TYPE E 42-INCH DIAMETER	FOOT	42
SIGNAL HEAD, LED, 1-FACE, 3-SECTION, MAST ARM MOUNTED	EACH	8
SIGNAL HEAD, LED, 1-FACE, 5-SECTION, MAST ARM MOUNTED	EACH	10
SIGNAL HEAD, LED, 2-FACE, 1-3 SECTION, 1-5 SECTION, BRACKET MOUNTED	EACH	2
PEDESTRIAN SIGNAL HEAD, LED, 1-FACE, BRACKET MOUNTED WITH COUNTDOWN TIMER	EACH	4
PEDESTRIAN SIGNAL HEAD, LED, 2-FACE, BRACKET MOUNTED WITH COUNTDOWN TIMER	EACH	2
TRAFFIC SIGNAL BACKPLATE, LOUVERED, ALUMINUM	EACH	18
INDUCTIVE LOOP DETECTOR	EACH	14
DETECTOR LOOP, TYPE I	FOOT	617
* LIGHT DETECTOR	EACH	4
* LIGHT DETECTOR AMPLIFIER	EACH	1
PEDESTRIAN PUSH-BUTTON	EACH	8
TEMPORARY TRAFFIC SIGNAL INSTALLATION	EACH	1
REMOVE EXISTING TRAFFIC SIGNAL EQUIPMENT	EACH	1
REMOVE EXISTING HANDHOLE	EACH	12
REMOVE EXISTING CONCRETE FOUNDATION	EACH	10
PREFORMED DETECTOR LOOP	FOOT	845
TEMPORARY TRAFFIC SIGNAL TIMINGS	EACH	1
SERVICE INSTALLATION, POLE MOUNTED	EACH	1
UNINTERRUPTIBLE POWER SUPPLY	EACH	1
ELECTRIC CABLE IN CONDUIT, GROUNDING, NO. 6 1C	FOOT	1320
ELECTRIC CABLE IN CONDUIT, NO. 20 3C, TWISTED, SHIELDED	FOOT	1282
* 100% COST TO VILLAGE OF ELK GROVE VILLAGE		

I.D.O.T. TRAFFIC SIGNAL INSTALLATION ELECTRICAL SERVICE REQUIREMENTS					TOTAL WATTAGE
TYPE	NO. LAMPS	WATTAGE INCAND.	LED	% OPERATION	
SIGNAL (RED)	22		17	0.50	187
(YELLOW)	22		25	0.25	138
(GREEN)	22		15	0.25	83
ARROW	24		12	0.10	29
PED. SIGNAL	8		25	1.00	200
CONTROLLER	1		100	1.00	100
TOTAL =					737

ENERGY COSTS TO: ILLINOIS DEPARTMENT OF TRANSPORTATION
 201 WEST CENTER COURT
 SCHAUMBURG, IL 60196-1096
 CONTACT: ELEANOR SARALLO
 PHONE: (630) 424-5124
 COMPANY: COM ED

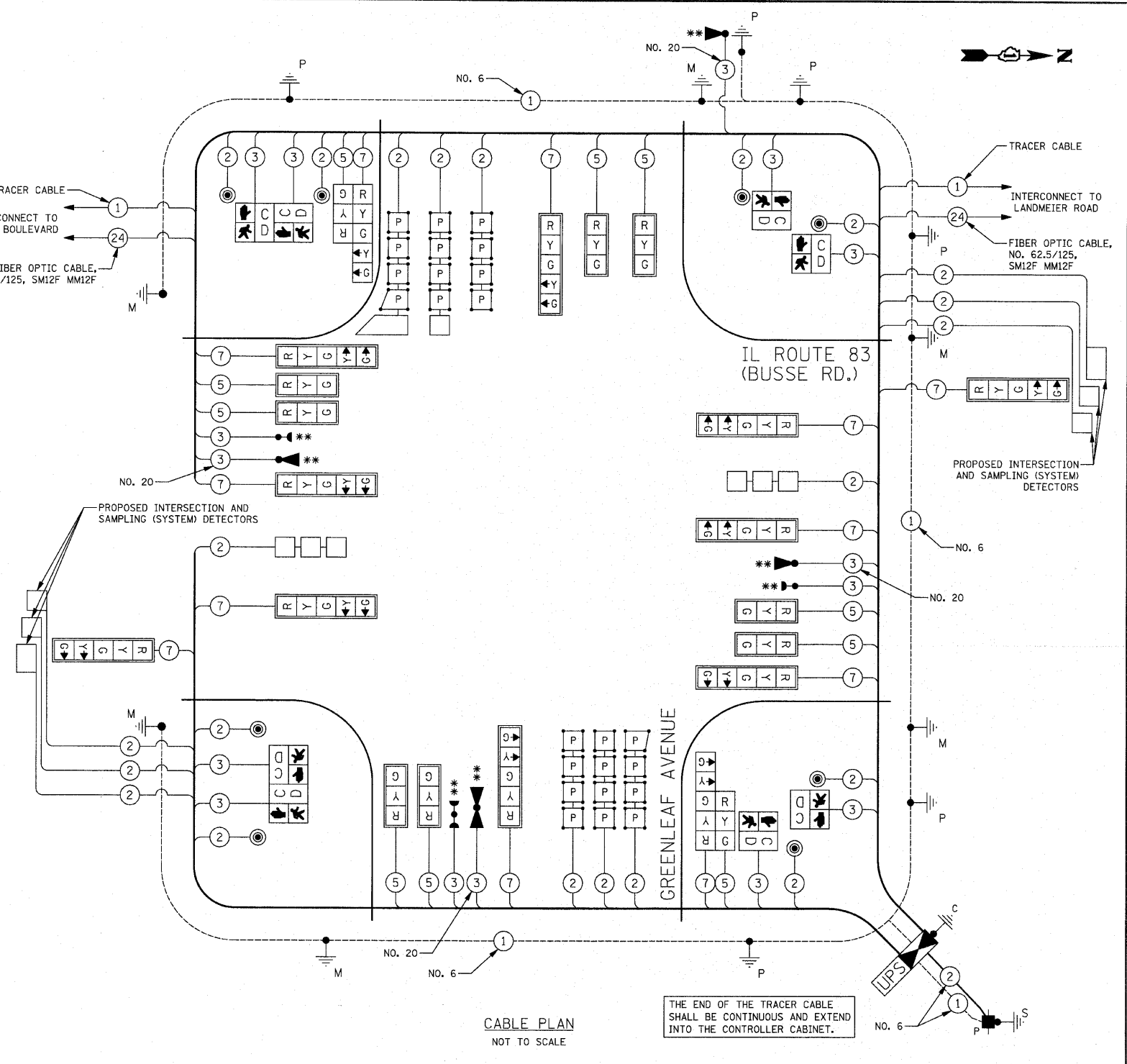
FILE NAME = ...V85_Cable Plan.dgn
 USER NAME = djk
 DESIGNED - BRD
 DRAWN - JRT
 PLOT SCALE = 5/8" = 1' IN.
 CHECKED - JJE
 DATE - 10-22-10
 REVISIONS:
 REVISIONS -
 REVISIONS -
 REVISIONS -

STATE OF ILLINOIS DEPARTMENT OF TRANSPORTATION

**CABLE PLAN, SEQUENCE OF OPERATION, EMERGENCY VEHICLE PREEMPTION SEQUENCE & SCHEDULE OF QUANTITIES
 IL ROUTE 83 (BUSSE RD.) AND GREENLEAF AVENUE**

F.A.P. RTE.	SECTION	COUNTY	TOTAL SHEETS NO.	SHEET NO.
344	09-00056-00-CH	COOK	111	57

SCALE: NOT TO SCALE SHEET NO. 1 OF 1 SHEETS STA. TO STA.
 CONTRACT NO. 63527
 FED. ROAD DIST. NO. 1 [ILLINOIS] FED. AID PROJECT M-900316593



** COSTS FOR EMERGENCY VEHICLE PREEMPTION EQUIPMENT INSTALLATION AND MAINTENANCE ARE THE RESPONSIBILITY OF THE VILLAGE OF ELK GROVE VILLAGE.

NOTE: THE TRAFFIC SIGNAL CONTROLLER EQUIPMENT FOR THIS PROJECT SHALL BE "ECONOLITE" TO MATCH THE EXISTING ADJACENT SYSTEM.