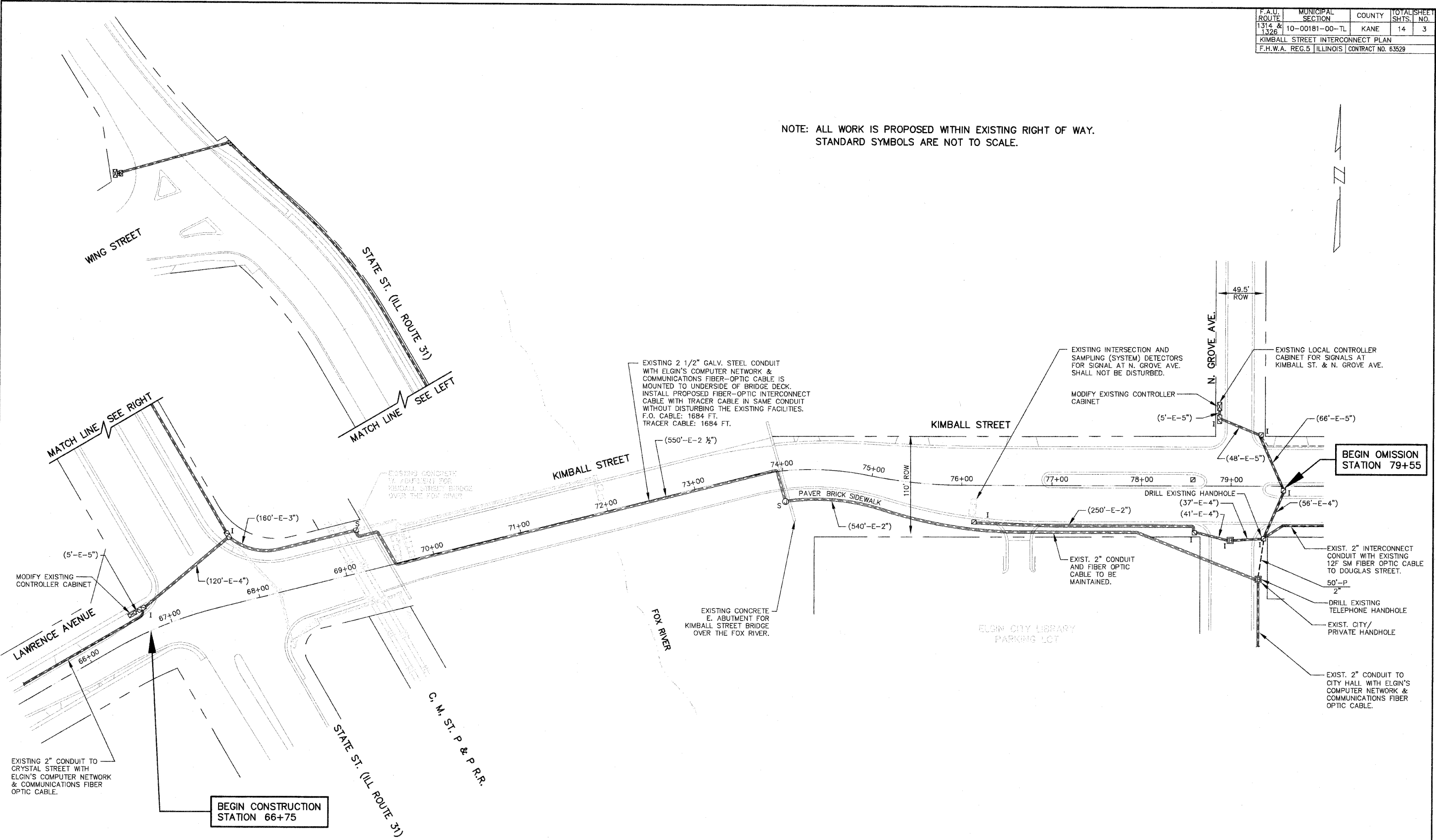


F.A.U. ROUTE	MUNICIPAL SECTION	COUNTY	TOTAL SHEETS	SHEET NO.
1314 & 1326	10-00181-00-TL	KANE	14	3
KIMBALL STREET INTERCONNECT PLAN				
F.H.W.A. REG.5 ILLINOIS CONTRACT NO. 63529				

NOTE: ALL WORK IS PROPOSED WITHIN EXISTING RIGHT OF WAY.
STANDARD SYMBOLS ARE NOT TO SCALE.



P:\2010\100181\cad\phase 2\dwg\100181-Sht-Interconnect_Kimball.dwg
Nov 09, 2010 at 15:41
Layout: 03-Kimball Interconnect Plan, Login Name: adelig

FILE NAME =	USER NAME =	DESIGNED - DAY	REVISED - 9-1-10
		DRAWN - AC	REVISED - 11/8/10
		CHECKED - RBG	REVISED -
		DATE - 8-27-10	REVISED -

**STATE OF ILLINOIS
DEPARTMENT OF TRANSPORTATION**

ELR
ELGIN CBD TRAFFIC SIGNAL SYSTEM INTERCONNECT
KIMBALL STREET INTERCONNECT PLAN

F.A.U. ROUTE	SECTION	COUNTY	TOTAL SHEETS	SHEET NO.
1314 & 1326	10-00181-00-TL	KANE	14	3
CONTRACT NO. 63529				
FED. ROAD DIST. NO. 1 ILLINOIS FED. AID PROJECT				