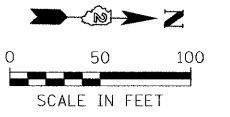
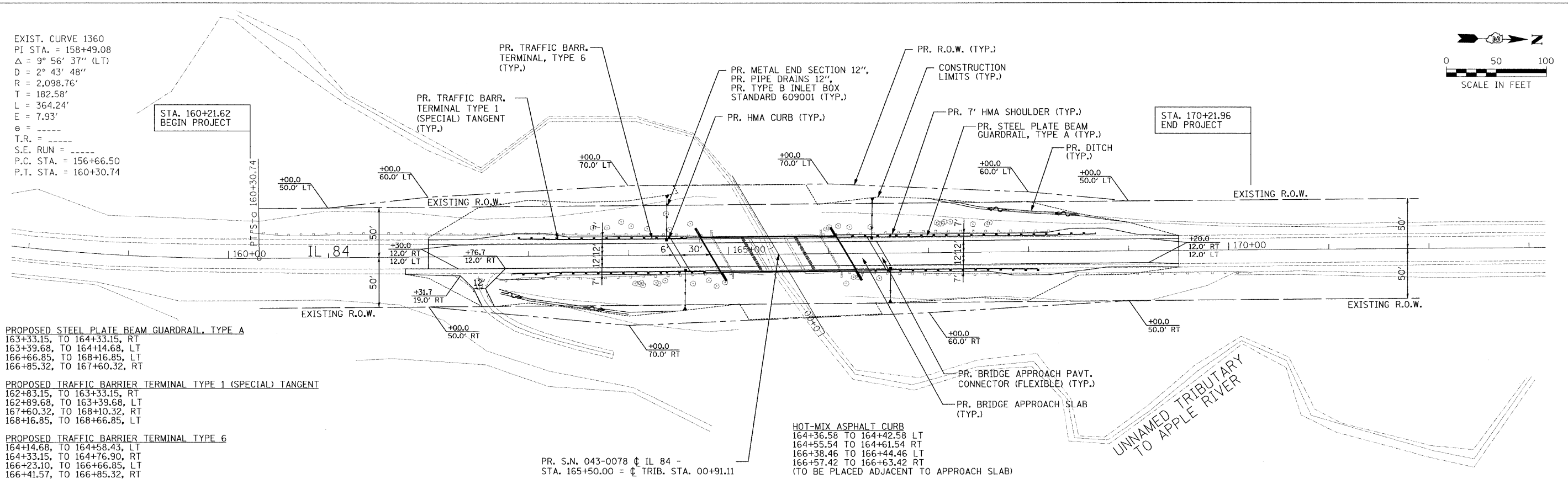


EXIST. CURVE 1360
 PI STA. = 158+49.08
 $\Delta = 9^\circ 56' 37''$ (LT)
 $D = 2^\circ 43' 48''$
 $R = 2,098.76'$
 $T = 182.58'$
 $L = 364.24'$
 $E = 7.93'$
 $e =$
 $T.R. =$
 $S.E. RUN =$
 P.C. STA. = 156+66.50
 P.T. STA. = 160+30.74



DATE	BY
DATE	BY
DATE	BY

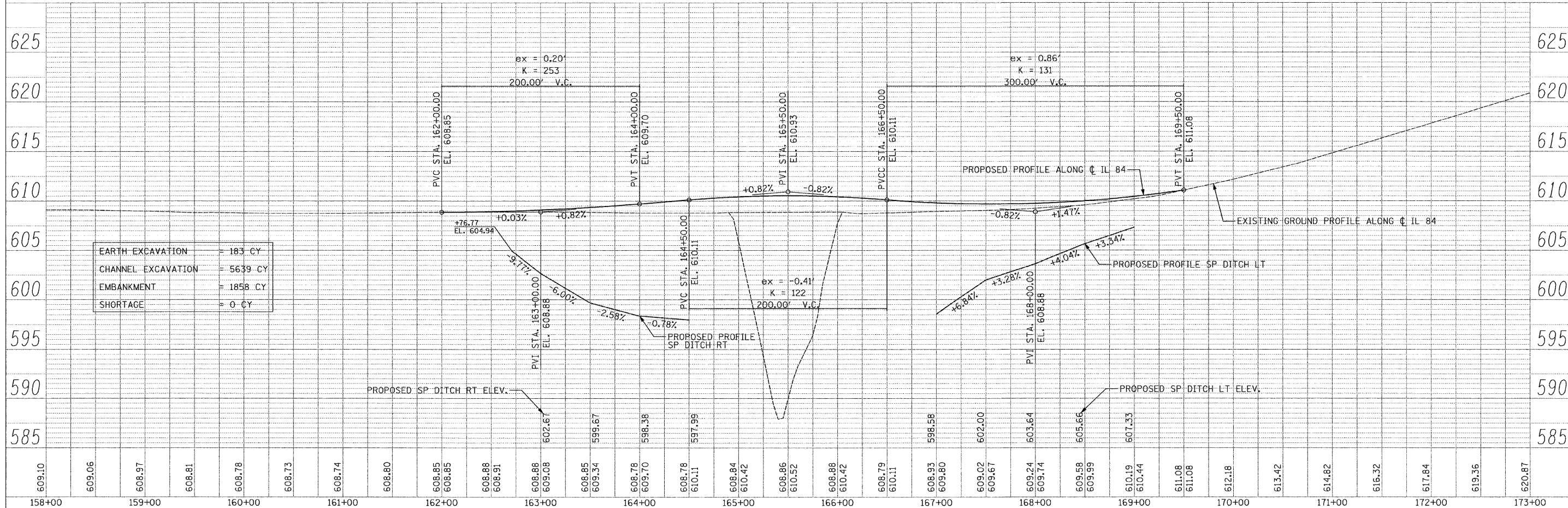


- PROPOSED STEEL PLATE BEAM GUARDRAIL, TYPE A**
 163+33.15, TO 164+33.15, RT
 163+39.68, TO 164+14.68, LT
 166+66.85, TO 168+16.85, LT
 166+85.32, TO 167+60.32, RT
- PROPOSED TRAFFIC BARRIER TERMINAL TYPE 1 (SPECIAL) TANGENT**
 162+83.15, TO 163+33.15, RT
 162+89.68, TO 163+39.68, LT
 167+60.32, TO 168+10.32, RT
 168+16.85, TO 168+66.85, LT
- PROPOSED TRAFFIC BARRIER TERMINAL TYPE 6**
 164+14.68, TO 164+58.43, LT
 164+33.15, TO 164+76.90, RT
 166+23.10, TO 166+66.85, LT
 166+41.57, TO 166+85.32, RT

HOT-MIX ASPHALT CURB
 164+36.58 TO 164+42.58 LT
 164+55.54 TO 164+61.54 RT
 166+38.46 TO 166+44.46 LT
 166+57.42 TO 166+63.42 RT
 (TO BE PLACED ADJACENT TO APPROACH SLAB)

PR. S.N. 043-0078 ϕ IL 84 -
 STA. 165+50.00 = ϕ TRIB. STA. 00+91.11

DATE	BY
DATE	BY
DATE	BY



EARTH EXCAVATION	= 183 CY
CHANNEL EXCAVATION	= 5639 CY
EMBANKMENT	= 1858 CY
SHORTAGE	= 0 CY

FILE NAME =	USER NAME = #USER#	DESIGNED - ST	REVISED -	STATE OF ILLINOIS DEPARTMENT OF TRANSPORTATION	PLAN AND PROFILE IL 84 OVER TRIBUTARY TO APPLE RIVER		F.A.P. RTE.	SECTION	COUNTY	TOTAL SHEETS	SHEET NO.	
#FILE#	PLOT SCALE = #SCALE#	DRAWN - ST	REVISED -		308	103BR-3 & 104BR-1	JO DAVIESS	126	22			
	PLOT DATE = #DATE#	CHECKED - FML	REVISED -		SCALE: 1" = 50'		SHEET NO. 1 OF 1 SHEETS		STA. 161+76.73 TO STA. 169+50.00	FED. ROAD DIST. NO.	ILLINOIS FED. AID PROJECT	CONTRACT NO. 64B26
		DATE - 10-15-2010	REVISED -									