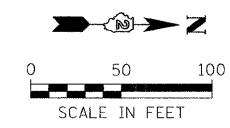
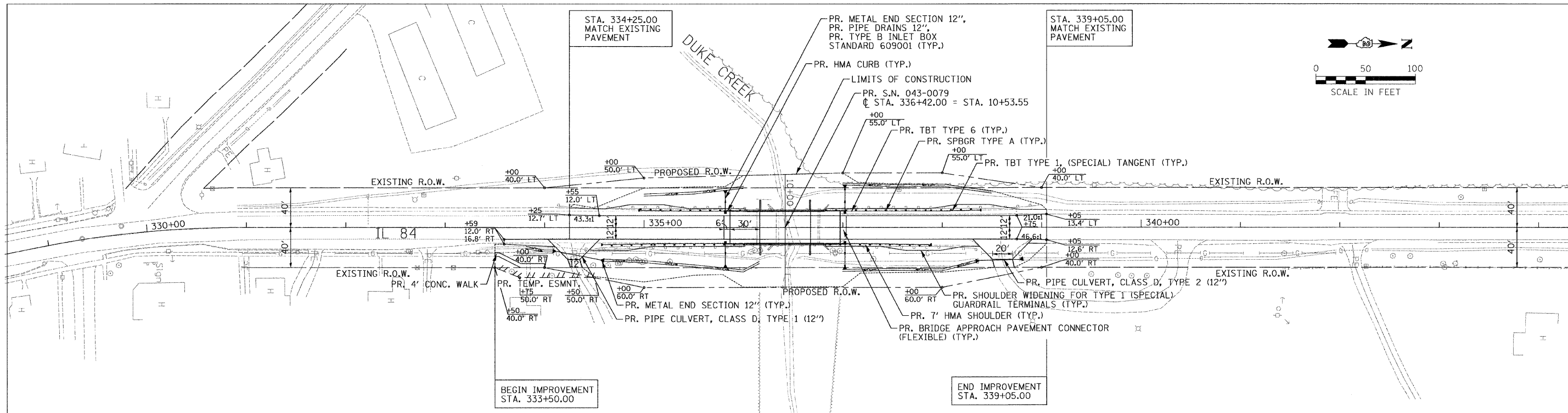


PLAN	SURVEYED	DATE
	ALIGNED	
	NOTED	
	CHECKED	
	BY	
	NO.	
	FILE NAME	



PR. TRAFFIC BARRIER TERMINAL TYPE 1, SPECIAL (TANGENT)
 STA. 334+95.85, TO STA. 335+45.85, LT
 STA. 337+88.15, TO STA. 338+38.15, LT
 STA. 334+58.35, TO STA. 335+08.35, RT
 STA. 337+38.15, TO STA. 337+88.15, RT

PR. STEEL PLATE BEAM GUARD RAIL, TYPE A
 STA. 335+45.85, TO STA. 335+58.35, LT
 STA. 337+25.65, TO STA. 337+88.15, LT
 STA. 335+08.35, TO STA. 335+58.35, RT
 STA. 337+25.65, TO STA. 337+38.15, RT

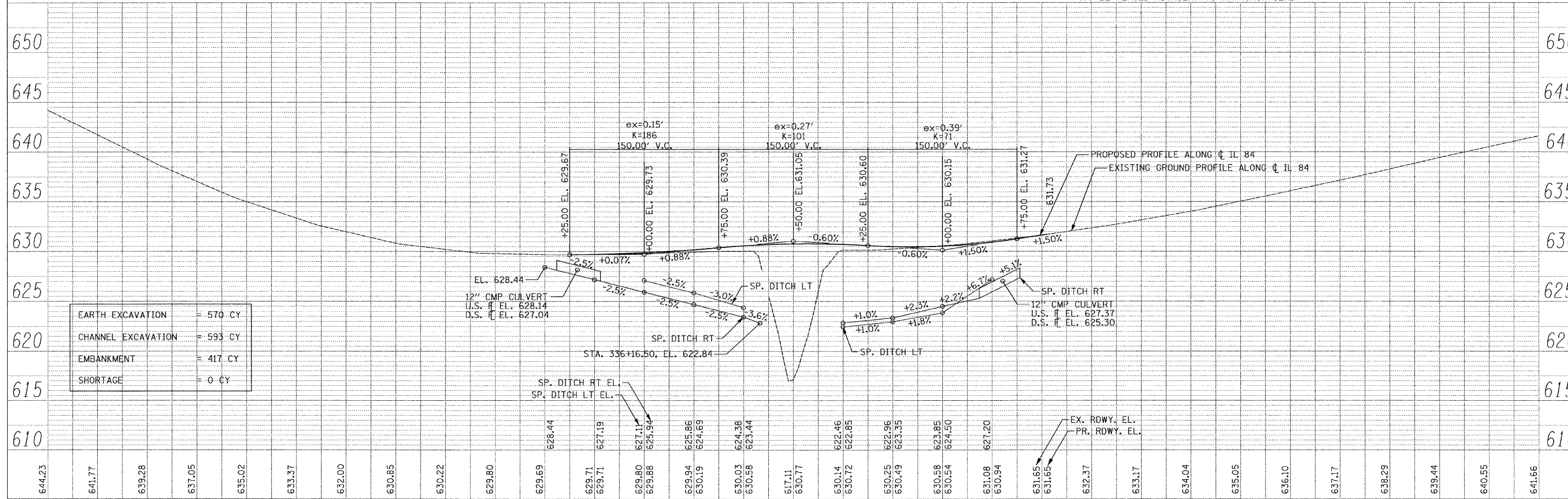
PR. TRAFFIC BARRIER TERMINAL, TYPE 6
 STA. 335+58.35, TO STA. 336+01.50, LT
 STA. 336+82.50, TO STA. 337+25.65, LT
 STA. 335+58.35, TO STA. 336+01.50, RT
 STA. 336+82.50, TO STA. 337+25.65, RT

PR. 4' WIDE CONCRETE SIDEWALK
 STA. 333+50.00, 25.0' - 29.0' RT
 STA. 333+54.00, 25.0' - 29.0' RT
 STA. 333+76.00, 36.0' - 40.0' RT
 STA. 334+00.00, 36.0' - 40.0' RT

HOT-MIX ASPHALT CURB
 STA. 335+80.50 TO STA. 335+86.50 RT
 STA. 335+80.50 TO STA. 335+86.50 LT
 STA. 336+97.50 TO STA. 337+03.50 RT
 STA. 336+97.50 TO STA. 337+03.50 LT
 (TO BE PLACED ADJACENT TO APPROACH SLAB)

PR. PIPE CULVERT, CLASS D, TYPE 1, 12"
 STA. 334+12.00, 24.1' RT TO STA. 334+56.00, 32.1' RT
 PR. PIPE CULVERT, CLASS D, TYPE 2, 12"
 STA. 338+37.00, 33.1' RT TO STA. 338+78.00, 32.2' RT

PROFILE	SURVEYED	DATE
	GRADES	
	NOTED	
	CHECKED	
	BY	
	NO.	
	STRUCTURE	
	NOTATIONS	
	CHRD	



EARTH EXCAVATION	=	570 CY
CHANNEL EXCAVATION	=	593 CY
EMBANKMENT	=	417 CY
SHORTAGE	=	0 CY

FILE NAME =	USER NAME = #USER#	DESIGNED - SEW	REVISED -	STATE OF ILLINOIS DEPARTMENT OF TRANSPORTATION	PLAN AND PROFILE IL 84 OVER DUKE CREEK		F.A.P. RTE.	SECTION	COUNTY	TOTAL SHEETS	SHEET NO.	
#FILE#		DRAWN - SEW	REVISED -		SCALE: 1" = 50'	SHEET NO. 1 OF 1 SHEETS	STA. 333+50.00 TO STA. 339+15.00	308	103BR-3 & 104BR-1	JO DAVIESS	126	23
		CHECKED - FML	REVISED -		CONTRACT NO. 64B26							
		DATE - 10-15-2010	REVISED -		FED. ROAD DIST. NO. ILLINOIS FED. AID PROJECT							