

LEGEND

- WORK AREA
- IMPACT ATTENUATORS, TEMPORARY (NON-REDIRECTIVE, NARROW)
- TYPE III BARRIAGE
- TEMPORARY CONCRETE BARRIER
- DRUM WITH STEADY BURN MONODIRECTIONAL LIGHT (PER HWY. STD. 701321-10)
- SIGN
- DETECTOR LOOPS
- TRAFFIC SIGNAL
- TEMPORARY RUMBLE STRIPS
- DOUBLE VERTICAL PANELS

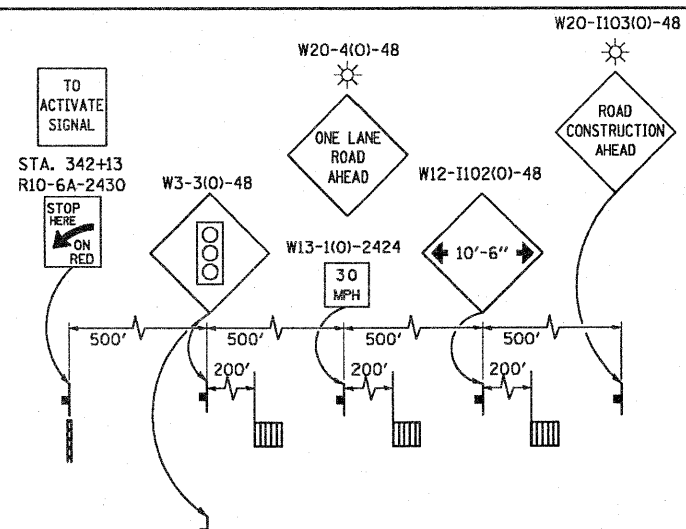
STAGE II CONSTRUCTION:

1. CLOSE EAST HALF OF IL-84 IN ACCORDANCE WITH HIGHWAY STANDARD 701321 AND AS SHOWN IN THE PLANS.
2. PERFORM EAST HALF STRUCTURAL AND APPROACH ROADWAY RECONSTRUCTION AS SHOWN IN THE PLANS.
3. APPLY PERMANENT PAVEMENT MARKINGS AND RAISED REFLECTIVE PAVEMENT MARKERS UNDER HIGHWAY STANDARD 701311.

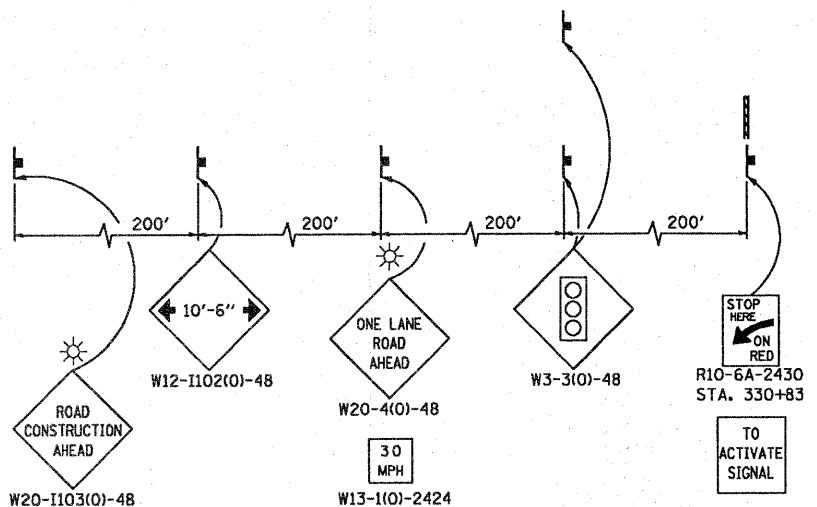
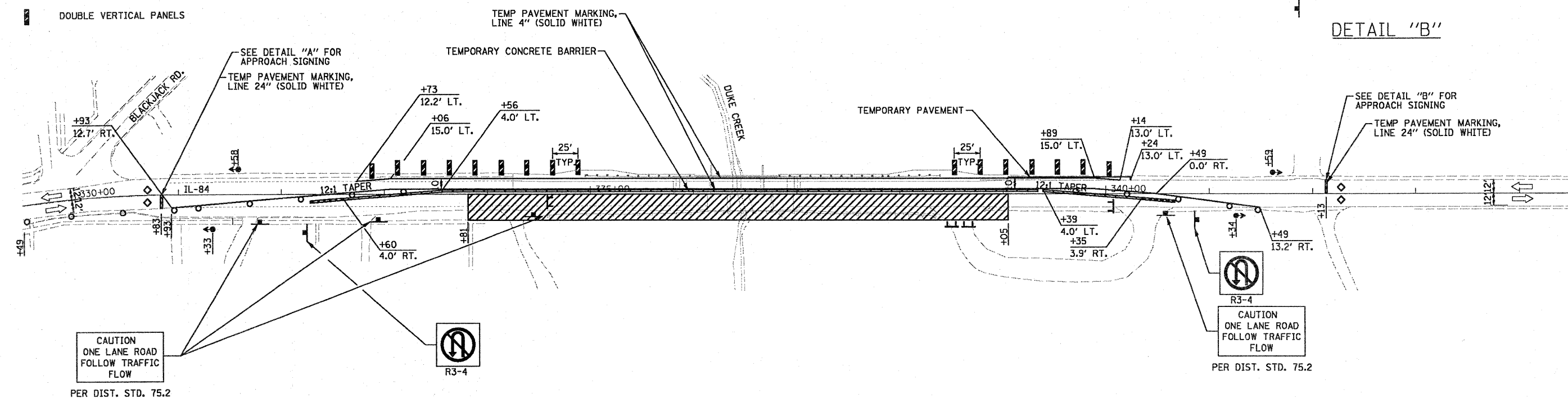
NOTES:

1. SEE HIGHWAY STANDARD 701321 FOR PLACEMENT OF OTHER DEVICES, INFORMATION, ETC.
2. ACCESS TO BE MAINTAINED TO DRIVEWAYS AT ALL TIMES DURING CONSTRUCTION.

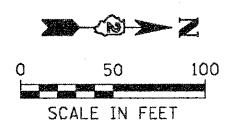
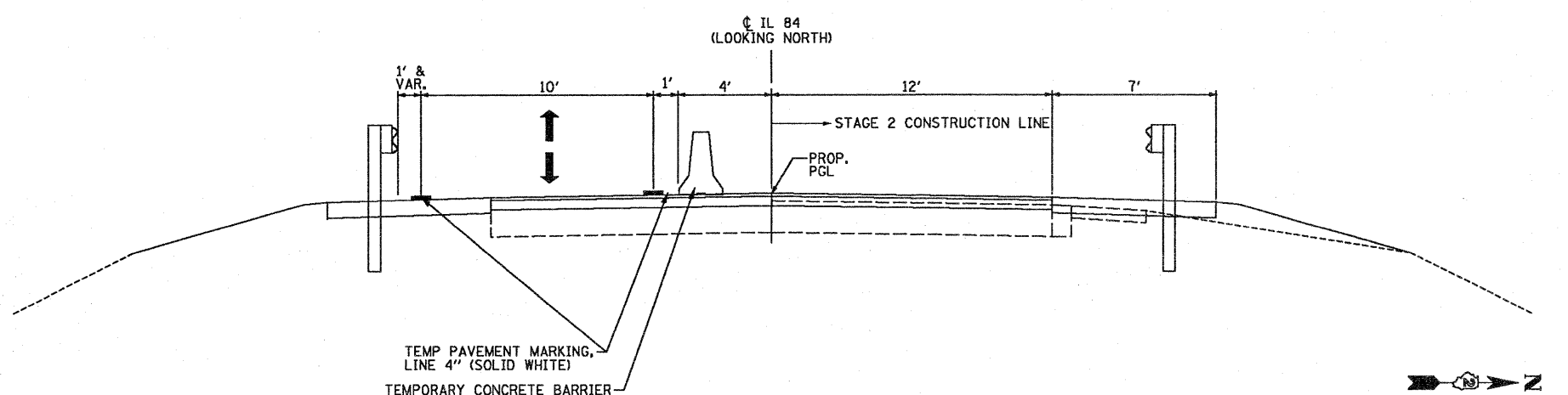
SEQUENCE OF OPERATIONS					
PHASE	A	B	C	D	E
INTERVAL	1	2	3	4	5
NORTHBOUND	G	Y	R	R	R
SOUTHBOUND	R	R	R	G	Y



DETAIL "B"



DETAIL "A"



FILE NAME = ...ND264b26-shr-staging2.dgn	USER NAME = Plotted by Scott Wilkinson	DESIGNED - SEW	REVISIONS	STATE OF ILLINOIS DEPARTMENT OF TRANSPORTATION	MAINTENANCE OF TRAFFIC PLAN - STAGE 2 IL-84 OVER DUKE CREEK	F.A.P. RTE. 308	SECTION 103BR-3 & 104BR-1	COUNTY JO DAVIESS	TOTAL SHEETS 126	SHEET NO. 32	
	PLOT SCALE = 100.0000' / IN.	DRAWN - SEW	REVISIONS			SCALE: 1" = 50'	SHEET NO. 1 OF 1 SHEETS	STA. 330+00 TO STA. 343+00	CONTRACT NO. 64B26		ILLINOIS FED. AID PROJECT
	PLOT DATE = 12/1/2010	CHECKED - FML	REVISIONS								
		DATE - 10-15-2010	REVISIONS								