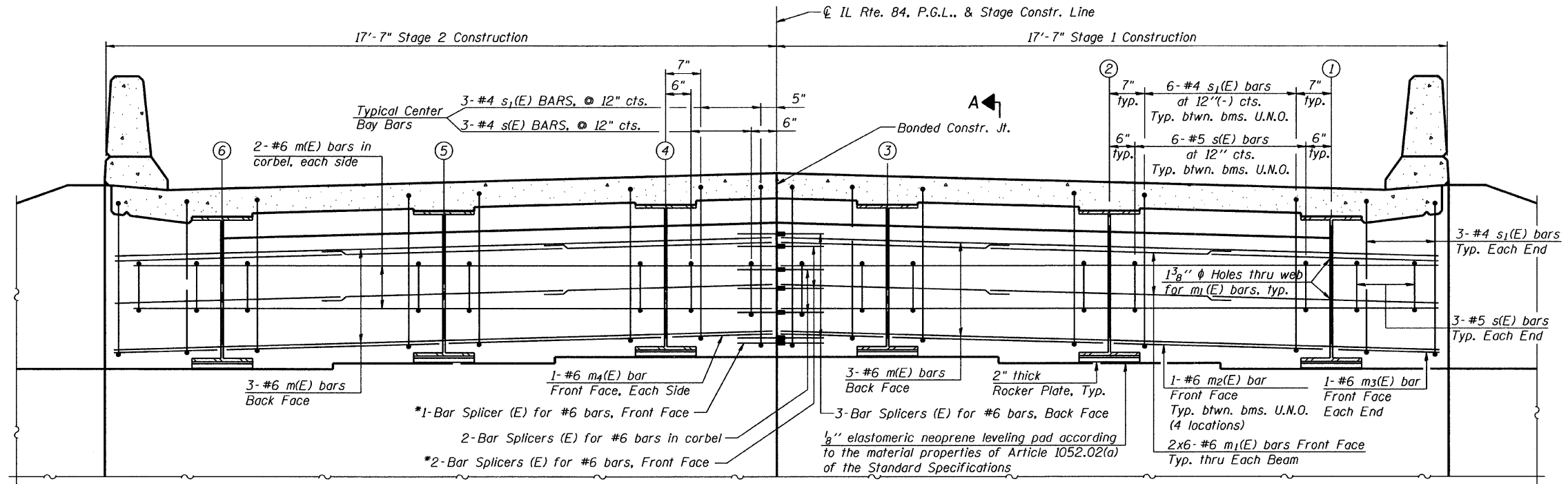
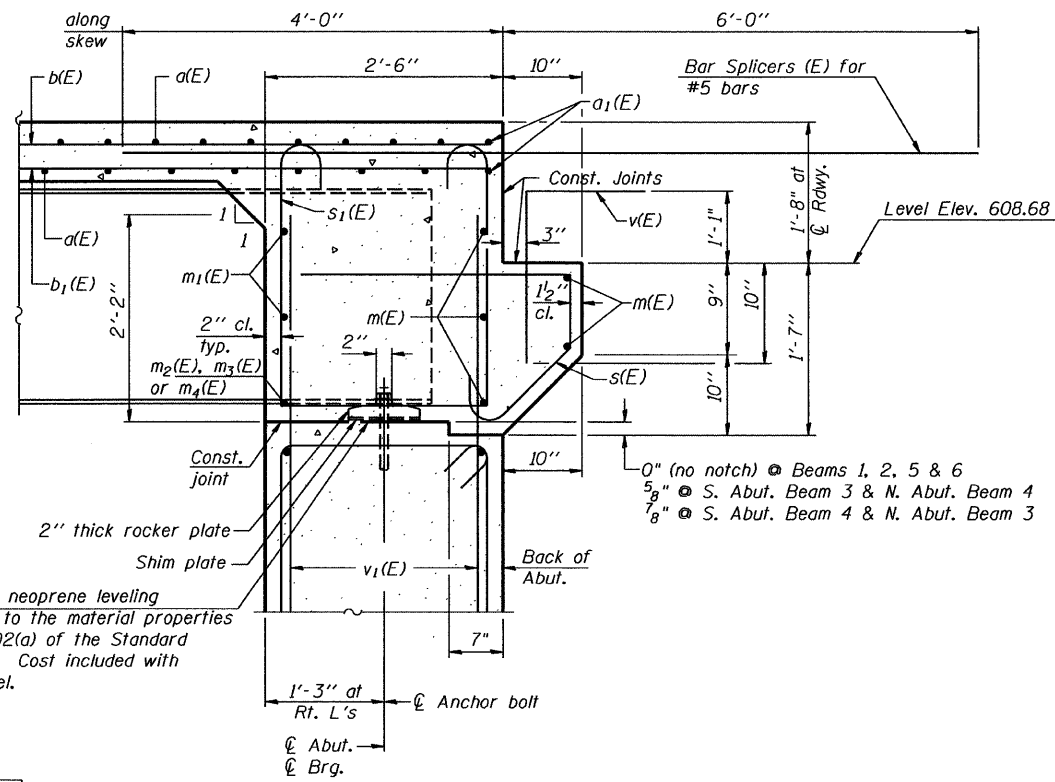


STATE OF ILLINOIS  
DEPARTMENT OF TRANSPORTATION



**DIAPHRAGM ELEVATION AT SOUTH ABUTMENT**

(Looking South)  
(South Abut. Shown, North Abut. similar, opp. hand)  
(Dimensions at right angles to  $\varnothing$  IL Rte 84)



**SECTION A-A**

Dimensions at right angles to abutment, except as shown.

**NOTES**

1. Reinforcement bars in diaphragm are billed with superstructure on sheet SA10 of 25.
2. Concrete in diaphragm is included with Concrete Superstructure on sheet SA10 of 25.
3. For details of bars s(E) & s<sub>1</sub>(E) see sheet SA10 of 25.
4. The s(E) and s<sub>1</sub>(E) bars shall be placed parallel to the beams. Spacing for these bars shall be at right angles to the beams.
5. All drainage system components shall extend to 2'-0" from the end of each wingwall except an outlet pipe shall extend until intersecting with the side slopes. The pipes shall drain into concrete headwalls. (See Article 601.05 of the Standard Specifications and Highway Standard 601101)
6. Bar Splicers indicated with \* may be field cut to fit.

**MIN. BAR LAP**  
#6 bar = 4'-5"

I:\Projects\2010\201003011\road\structural\diag\00\SA11\_DIAPHRAGMS.dgn 10/12/2010

DESIGNED	J.Z.
CHECKED	E.E.J.
DRAWN	R.B.H.
CHECKED	J.Z.

DIAPHRAGMS AT ABUTMENTS					
Illinois Rte. 84 Over Apple River Tributary					
STATION 165+50.00			STRUCTURE NO. 043-0078		
SHEET NO.	F.A.P. RTE.	SECTION	COUNTY	TOTAL SHEETS	SHEET NO.
SA11 OF 25 SHEETS	308	104BR-1	JO DAVIESS	126	47
			CONTRACT NO. 64B26		
10-15-2010		ILLINOIS FED. AID PROJECT			

**GRÄEF** 8501 W. Higgins Road, Suite 280  
Chicago, Illinois 60631  
(773) 399-0112