

STATE OF ILLINOIS  
DEPARTMENT OF TRANSPORTATION

|                       |         |            |          |                  |             |
|-----------------------|---------|------------|----------|------------------|-------------|
| ROUTE NO.             | SECTION | COUNTY     | DISTRICT | SHEET            | SHEET NO. 1 |
| 308                   | *       | JO DAVIESS | 13       | 5                | 2 SHEETS    |
| FED. ROAD DIST. NO. 7 |         | ILL. DIST. |          | FED. AID PROJECT |             |

Contract Number: 64D87 Sheet 92 of 126

**GENERAL NOTES**

All structural steel shall conform to AASHTO Classification M-270 Gr. 36, unless otherwise noted.  
Plan dimensions and details relative to existing plans are subject to routine variations. The Contractor shall field verify existing dimensions and details affecting new construction and make necessary approved adjustments prior to construction or ordering of materials. Such variations shall not be cause for additional compensation for a change in scope of the work, however, the Contractor will be paid for the quantity actually furnished based upon the unit price bid for the work.

The contractor is advised that the existing PPC Deck Beams are in a deteriorated condition with reduced load carrying capacity. It is the contractor's responsibility to account for the condition of the beams when developing construction procedures.

See Section 584 of the Standard Specifications for Epoxy Grouting of Threaded Rods; Minimum embedment 9".

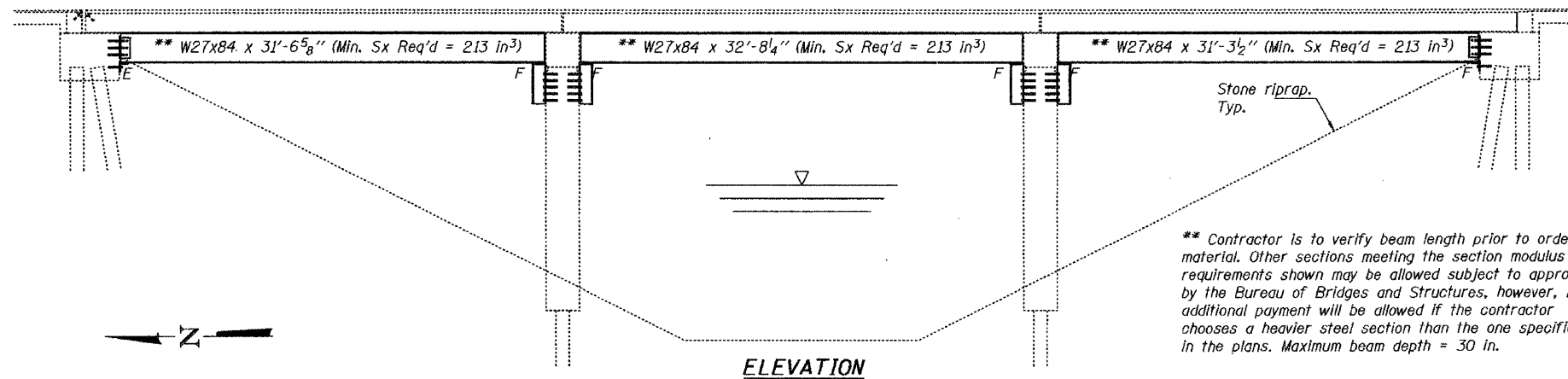
The cost of epoxy grouting threaded rods on the pier cap and beams shall be included with Furnishing and Erecting Structural Steel.

The cost of any excavation required shall be included with Furnishing and Erecting Structural Steel.

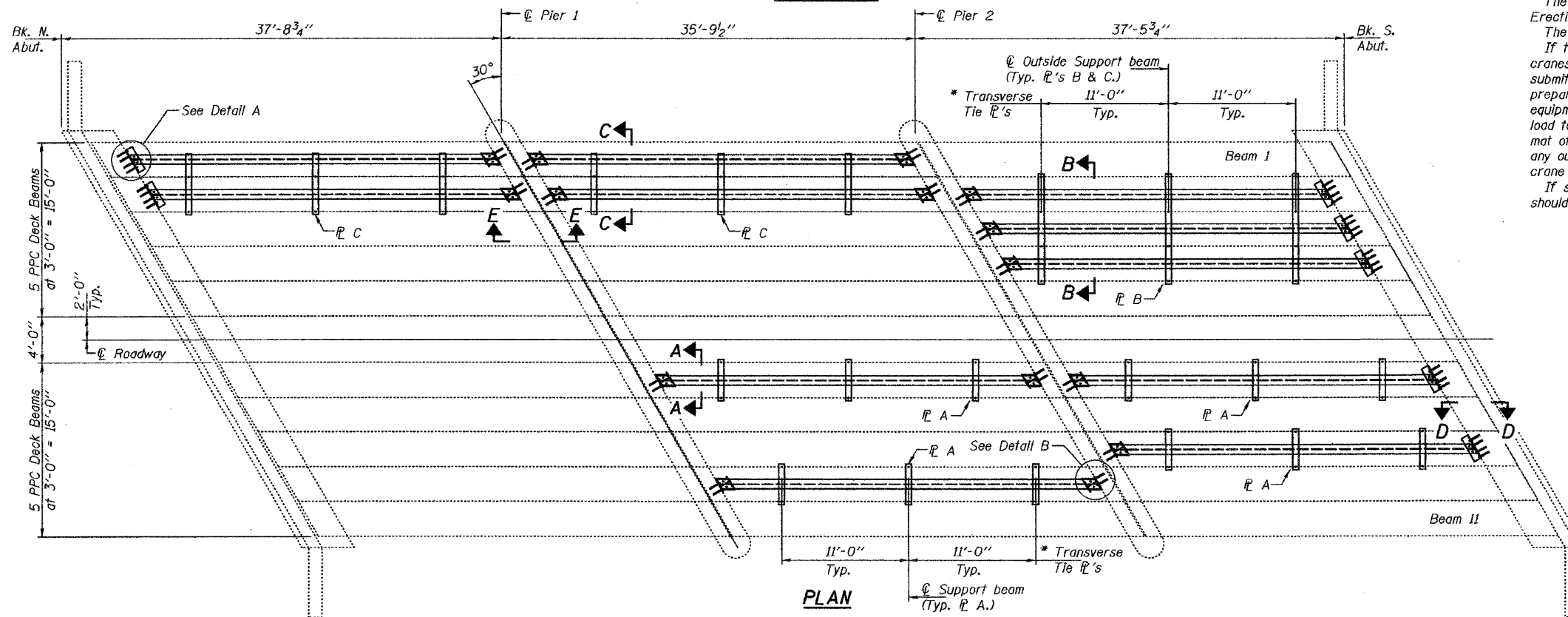
The Contractor has the option of using used steel. See Special Provisions.

If the contractor's procedure for placement of beams involves placement of cranes or other heavy equipment on the bridge, a detailed procedure shall be submitted to the Engineer for approval. The procedure shall include calculations, prepared and sealed by an Illinois Licensed Structural Engineer, verifying that the equipment and procedure used will not overstress the existing beams. To distribute load to multiple beams and protect the existing surface, in all cases a double layer mat of heavy timbers shall be used at all times under crane tracks or wheels and any outriggers in the down position. If necessary, shims shall be used under the crane mat to ensure uniform contact with the underlying beams.

If staging is required for installation of the steel beams, Stage I construction should be on the east side of the structure.

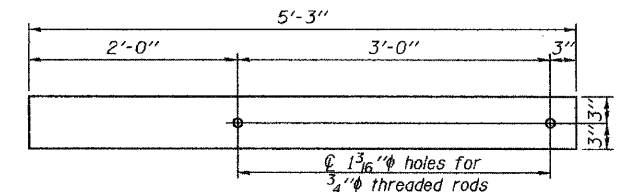


\*\* Contractor is to verify beam length prior to ordering material. Other sections meeting the section modulus requirements shown may be allowed subject to approval by the Bureau of Bridges and Structures, however, no additional payment will be allowed if the contractor chooses a heavier steel section than the one specified in the plans. Maximum beam depth = 30 in.

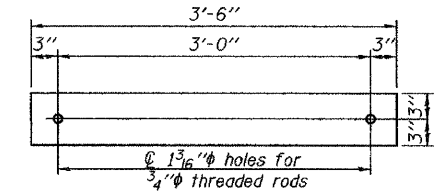


\* @ Transverse tie R's (3 per span). Place additional shims at midpoints between tie R's. Securely weld shims to top flange of support beam. Min. shim size is 6" x flange width.

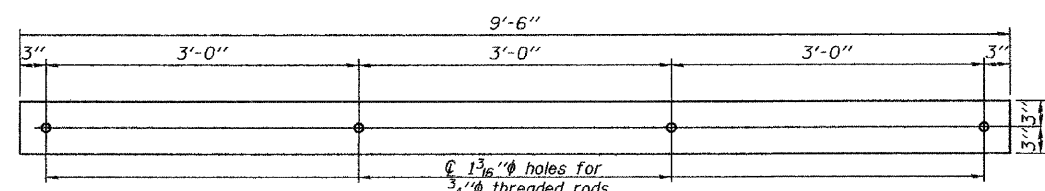
Note:  
For Sections A-A thru E-E & Details A & B, see sheet 2 of 2.



**PLATE C**  
R 1/2" x 6" x 5'-3"  
(6 required)



**PLATE A**  
R 1/2" x 6" x 3'-6"  
(12 required)



**PLATE B**  
R 1/2" x 6" x 9'-6"  
(3 required)

**TOTAL BILL OF MATERIAL**

| ITEM                                     | UNIT  | QUANTITY |
|--|-------|----------|
| Furnishing and Erecting Structural Steel | Pound | 35980    |

**PLAN AND ELEVATION**  
**FA 18 OVER**  
**TRIBUTARY TO APPLE RIVER**  
**JO DAVIESS COUNTY**  
**SN 043-0038**

**FOR INFORMATION ONLY**

|          |         |
|----------|---------|
| DESIGNED | SJB     |
| CHECKED  | VHV     |
| DRAWN    | balva   |
| CHECKED  | SJB VHV |

SEPTMBER 10, 2007  
EXAMINED *[Signature]*  
REPAIR PLANS UNIT CHIEF  
PASSED *[Signature]*  
ENGINEER OF BRIDGES AND STRUCTURES



Expires: November 30, 2008