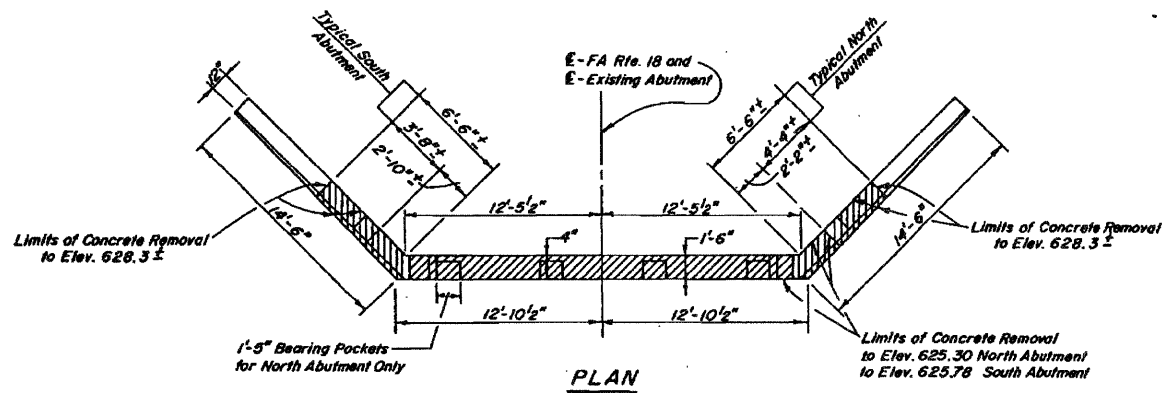


STATE OF ILLINOIS  
DEPARTMENT OF TRANSPORTATION  
DIVISION OF HIGHWAYS

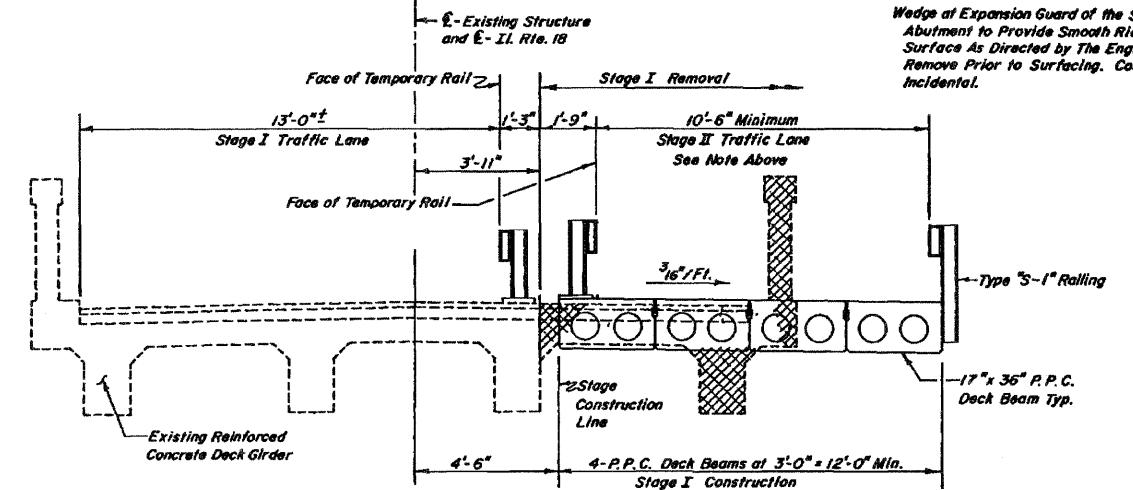
ROUTE NO.	SECTION	COUNTY	TOTAL SHEETS	SHEET NO.	SHEET NO. 2 SHEETS 7
S.R.L.	103	JO DAVIESS	18	8	
F.A. 18	BR-2	ILLINOIS	FED. AID PROJECT		

Sheet 95 of 126 NOTE:

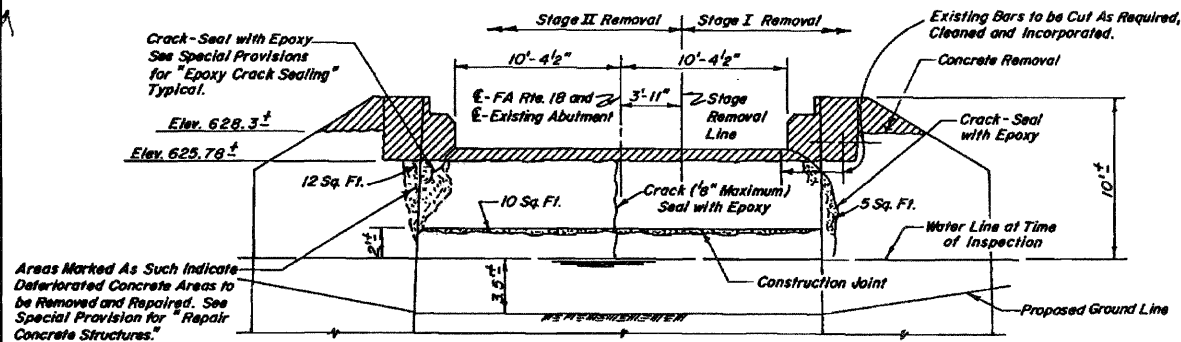
Wedge of Expansion Guard of the South Abutment to Provide Smooth Riding Surface As Directed by The Engineer. Remove Prior to Surfacing. Cost Incidental.



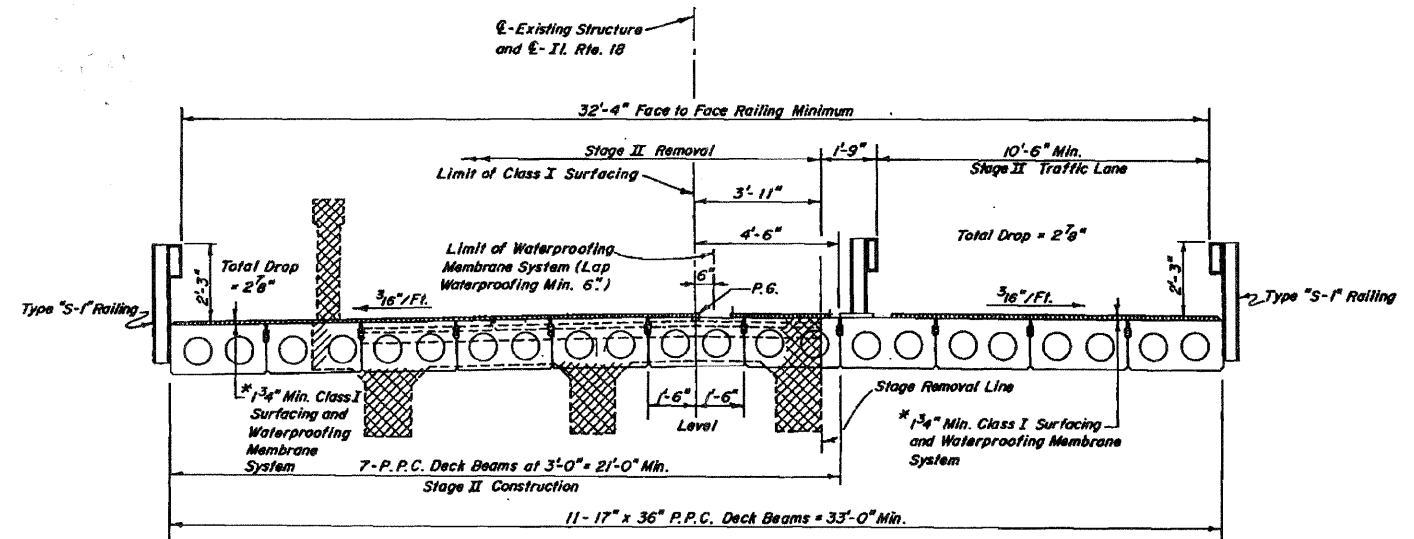
NOTE:  
Cracks and deteriorated concrete surface areas between the water line and/or existing ground line and the proposed ground line shall be specified for repair by the Engineer. Plan dimensions and details relative to existing structure have been taken from the existing plans and are subject to nominal construction variations.



CROSS SECTION - STAGE I CONSTRUCTION  
(LOOKING SOUTH)



SOUTH ABUTMENT ELEVATION



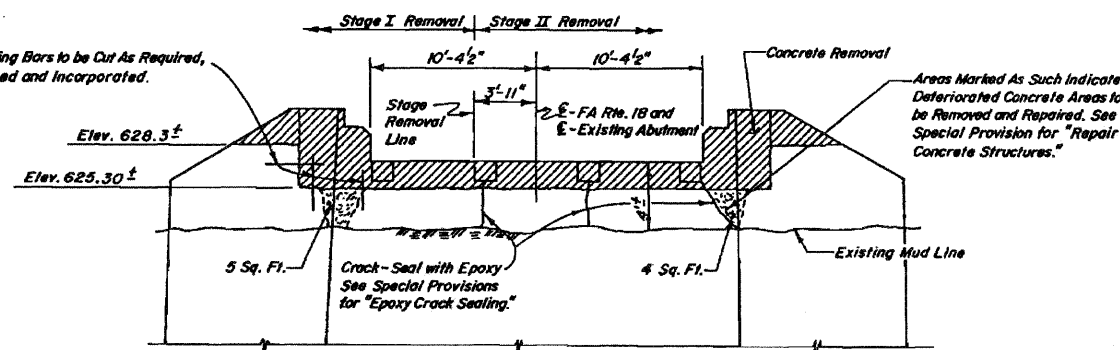
CROSS SECTION - STAGE II CONSTRUCTION  
(LOOKING SOUTH)

\* Stage III Construction: Waterproof and Surface Northbound Lanes.  
Stage IV Construction: Waterproof and Surface Southbound Lanes.  
See Sheet 4 of Roadway Plans for Traffic Staging and Stage Construction Details.

Note: For Shear Key Clamping Details at Stage Construction Joint see Sheet 14 of 18.

Areas Marked As Such Indicate Deteriorated Concrete Areas to be Removed and Repaired. See Special Provision for "Repair Concrete Structures."

Areas Marked As Such Indicate Deteriorated Concrete Areas to be Removed and Repaired. See Special Provision for "Repair Concrete Structures."



NORTH ABUTMENT ELEVATION

EXISTING ABUTMENT DETAILS  
(SHOWING STRUCTURE REHABILITATION AND CONCRETE REMOVAL)

BILL OF MATERIAL

ITEM	UNIT	QUANTITY
Concrete Removal - North Abutment	Cu. Yds.	3.7
Concrete Removal - South Abutment	Cu. Yds.	3.0
Removal of Existing Superstructure	Each	1
Repair Concrete Structures - North Abutment	Sq. Ft.	27
Repair Concrete Structures - South Abutment	Sq. Ft.	9
Epoxy Crack Sealing - North Abutment	Lin. Ft.	10
Epoxy Crack Sealing - South Abutment	Lin. Ft.	15

DESIGNED	Samani
CHECKED	R.F.C.
DRAWN	Lin
CHECKED	R.F.C./F.S.

FOR INFORMATION ONLY

ABUTMENT REHABILITATION AND DECK SECTIONS  
PROJECT GR-18 (I15) SEC. 103 BR-2  
FA 18 (I. 84) OVER DUKE CREEK  
JO DAVIESS COUNTY  
STA. 242 + 45.5