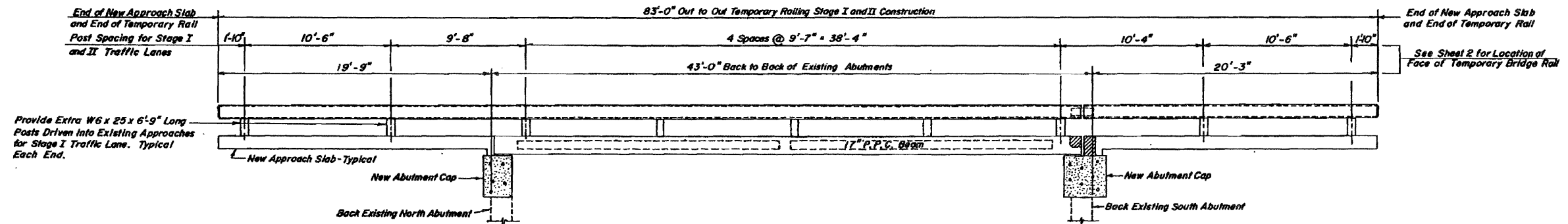


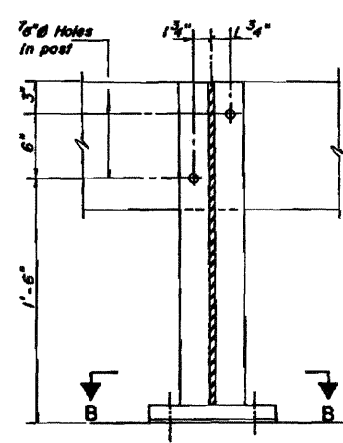
STATE OF ILLINOIS
DEPARTMENT OF TRANSPORTATION
DIVISION OF HIGHWAYS

ROUTE NO.	SECTION	COUNTY	TOTAL SHEETS	SHEET NO.	SHEET NO. 7
F.A. 18	103 BR-2	JO DAVIESS	18	13	SHEETS 7
FED. ROAD DIST. NO. 7	ILLINOIS	FED. AID PROJECT			

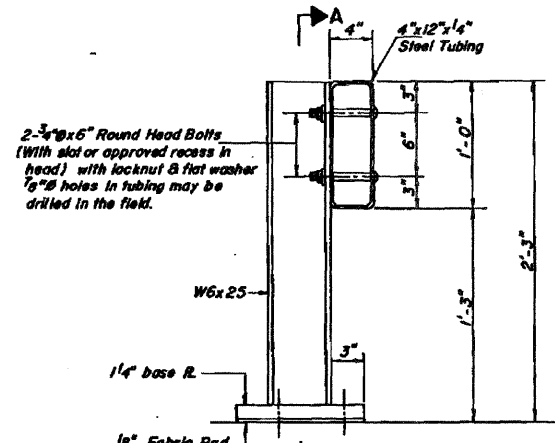
Sheet 100 of 126



INSIDE ELEVATION OF RAIL

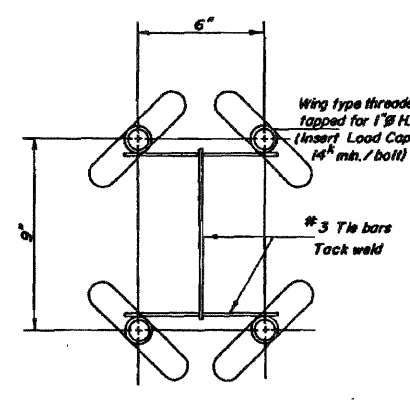


SECTION A-A

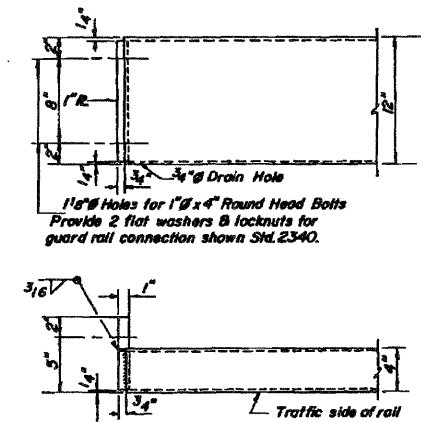


SECTION AT RAIL POST

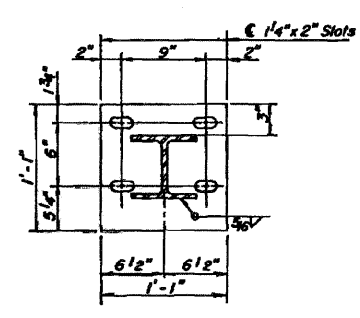
Typical except at approaches for Stage I Traffic Lane. See inside elevation of rail above.



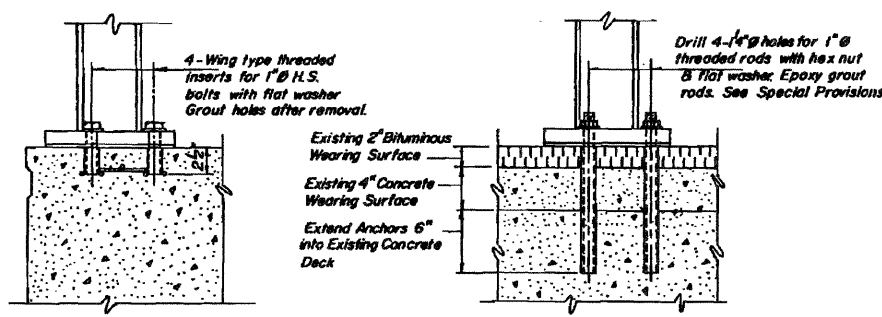
INSERT DETAIL



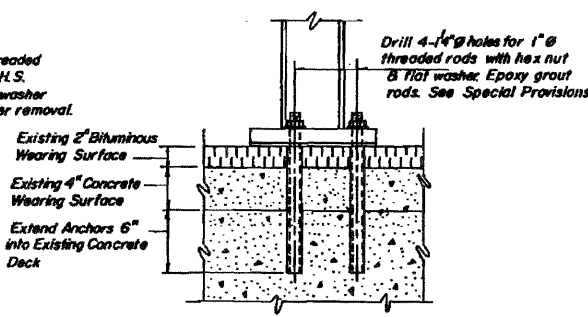
END OF RAIL DETAILS



SECTION B-B

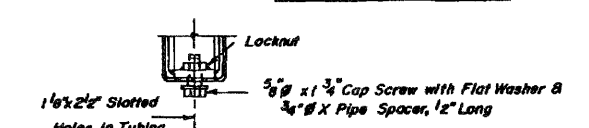


NEW P.P.C. DECK BEAMS AND APPROACH SLAB

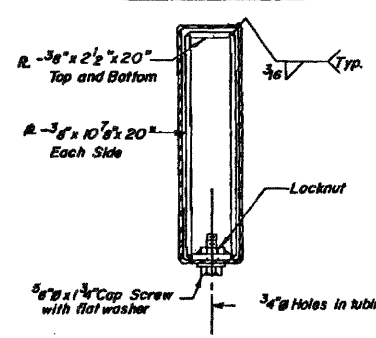


EXISTING REINFORCED CONC. DECK

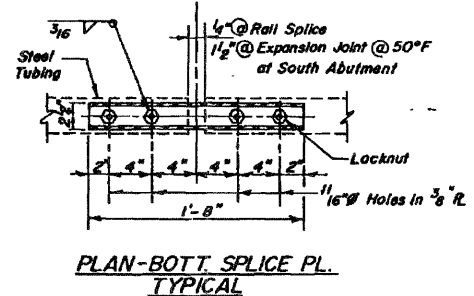
NEW & EXISTING DECKS ANCHORAGE DETAILS



RAIL SPLICE CONNECTION AT EXPANSION JT.



SECTION AT RAIL SPLICE



PLAN-BOTT. SPLICE PL. TYPICAL

NOTES

Hollow structural steel tubing shall conform to the requirements of A.S.T.M. designation A-500 Grade B Structural Steel Tubing.
All other steel shapes & plates shall conform to the requirements of AASHTO M-183 except posts shall conform to AASHTO M-223, Grade 50.
Bolts, cap screws, & nuts shall conform to the requirement of A.S.T.M. designation A-307 except for high strength bolts, threaded rods, nuts and washers noted which shall conform to AASHTO M-164.
The bridge rail shall receive one shop coat of a steel prime paint.
The 1" high strength bolts or threaded rods used to connect the railposts shall be tightened in accordance with Article 502D-4(g)(3) of the Standard Specification.
See Special Provisions for Temporary Bridge Rail.
See Roadway Plans for Traffic Control and Protection beyond limits of Temporary Railing.

BILL OF MATERIAL

ITEM	UNIT	QUANTITY
Temporary Bridge Rail	Lh. Ft.	83

TEMPORARY RAILING DETAILS
PROJECT GR-18 (115) SEC. 103 BR-2
FA 18 (I.I. 84) OVER DUKE CREEK
JO DAVIESS COUNTY
STA. 242 + 45.5

FOR INFORMATION ONLY

DESIGNED	Samari
CHECKED	R.F.C.
DRAWN	A.B.I. / S.B.
CHECKED	R.F.C./F.S.