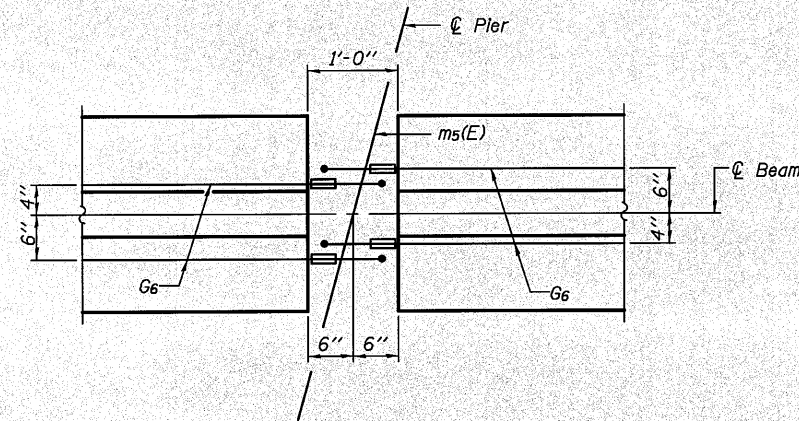
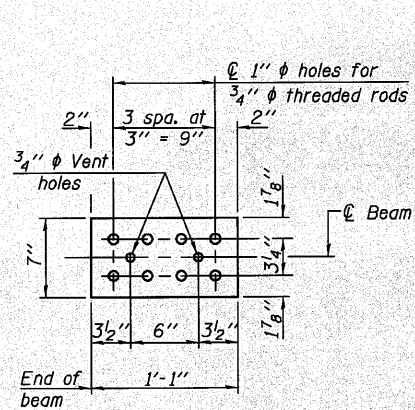


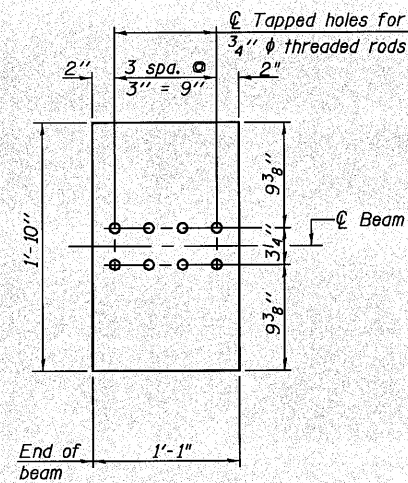
**ELEVATION OF BEAM AT PIER**



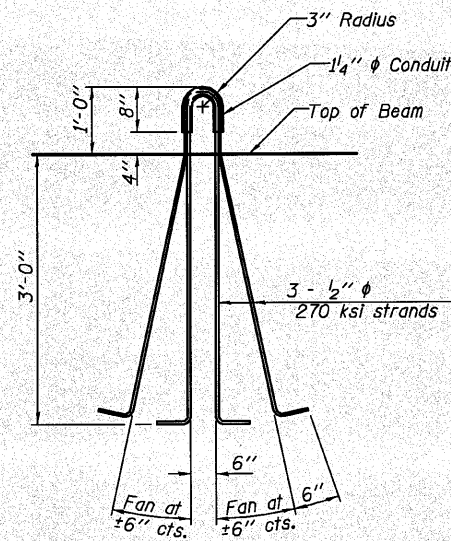
**PLAN OF BEAM AT PIER**



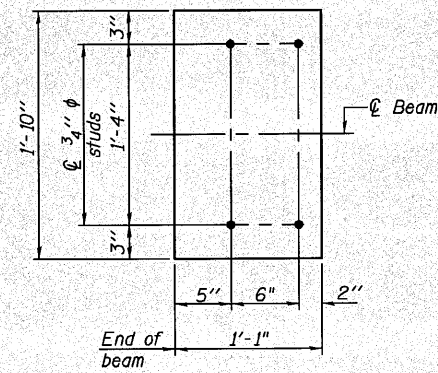
**TOP PLATE**



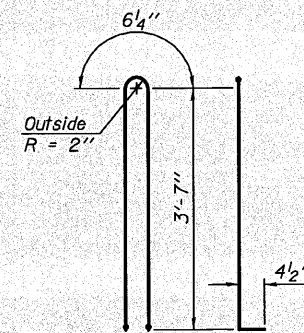
**BOTTOM PLATE**  
(Showing threaded rods)



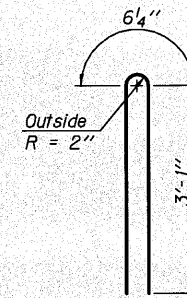
**LIFTING LOOP DETAIL**



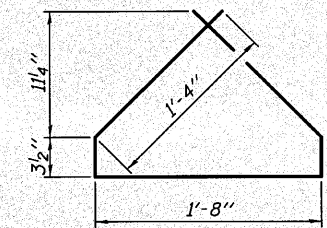
**BOTTOM PLATE**  
(Showing studs)



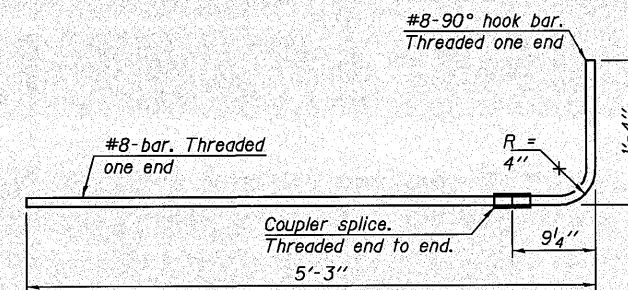
**BAR G1**



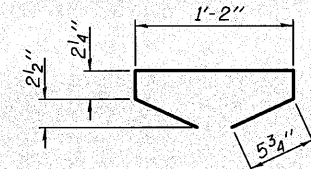
**BAR G2**



**BAR G4**



**G6 BAR ASSEMBLY**



**BAR G5**

**Notes:**

Inserts for 3/4"  $\phi$  threaded dowel rods, when specified, are to be two strut, ferrule type for interior beams and single ferrule, flared loop type for exterior beams. Prestressing steel shall be uncoated high strength, low relaxation 7-wire strand, Grade 270. The nominal diameter shall be 1/2" and the nominal cross-sectional area shall be 0.153 sq. in.

Reinforcement bars shall conform to ASTM A 706, Grade 60. (See Special Provisions). A minimum 2 1/2"  $\phi$  lifting pin shall be used to engage the lifting loops during handling. Tilt G6 bars when necessary to maintain 1 1/2" clearance. The top and bottom plates shall be AASHTO M270 Grade 50. The bottom plates and studs shall be galvanized according to AASHTO M111. Top plates and threaded rods need not be galvanized. Threaded rods shall be ASTM F 1554 Grade 55. The G6 bar assembly shall have the threaded ends oversized to ensure no reduction in cross sectional area after threading. The coupler splice shall be capable of developing 125 percent of the yield strength of the reinforcement bar. Beams requiring G6 bar assemblies shall not be released from the fabricator until they have attained 45 days of age or older.

See bearing details for pintle hole locations when required.

**BILL OF MATERIAL**

Item	Unit	Total
Furnishing and Erecting Precast Prestressed Concrete I-Beams, 42"	Ft.	1157.5

11/22/2018 10:07:08 AM G:\ENCL\6-679P-14A\_D2\_Bridges Phase 2\1162\LOADS\Structure\1162\17076-64D25\_626\_Beam\_Details.dgn



DESIGNED - GPM	REVISED -
CHECKED - BJM	REVISED -
DRAWN - JNH/MWS	REVISED -
CHECKED - BRT	REVISED -

DESIGNED - GPM	REVISED -
CHECKED - BJM	REVISED -
DRAWN - JNH/MWS	REVISED -
CHECKED - BRT	REVISED -

**STATE OF ILLINOIS**  
**DEPARTMENT OF TRANSPORTATION**

**42" PPC I-BEAM DETAILS**  
**STRUCTURE NO. 037-0176**

SHEET NO. 21 OF 29 SHEETS

F.A.P. RTE.	SECTION	COUNTY	TOTAL SHEETS	SHEET NO.
638	1298R-4	HENRY	93	42
CONTRACT NO. 64D25				
ILLINOIS FED. AID PROJECT				