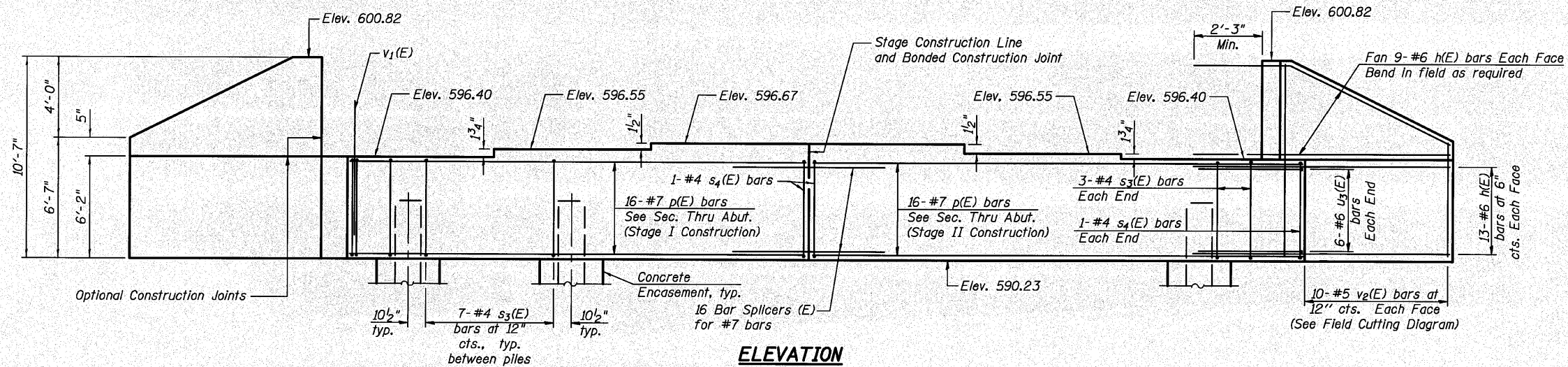
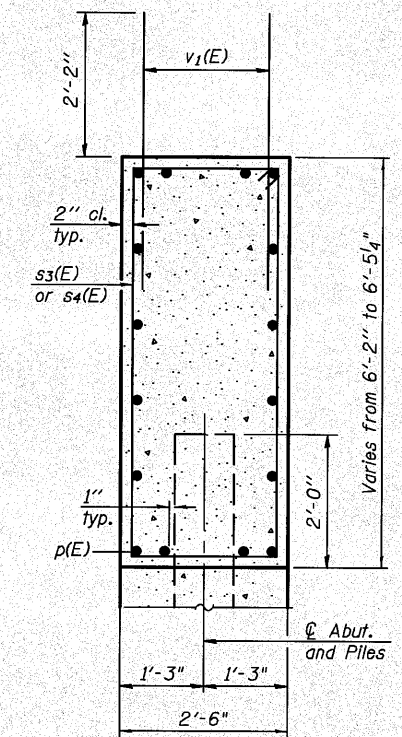


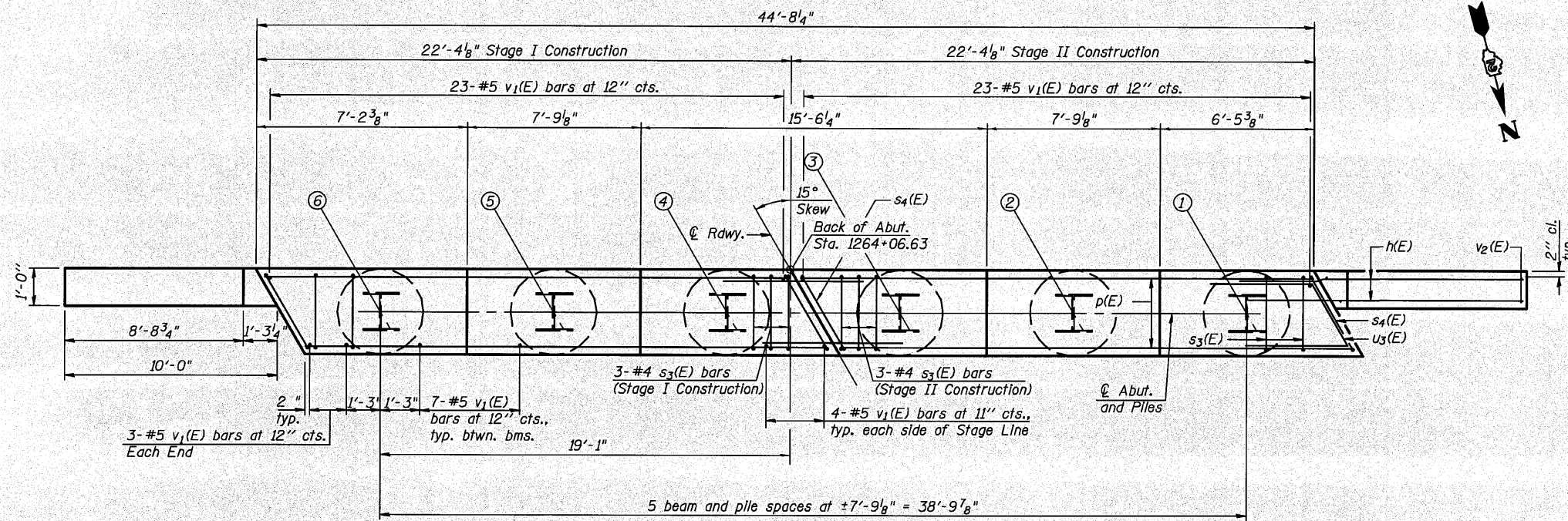
Notes:
Pour steps monolithically with cap.



ELEVATION



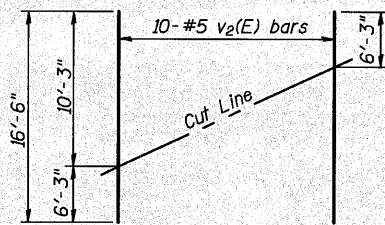
SEC. THRU ABUT.



PLAN

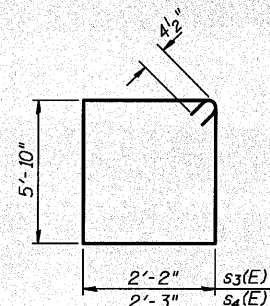
PILE DATA

Type: HP 14x73 w/Pile Shoes
 Nominal Required Bearing: 578 kips
 Factored Resistance Available: 286.5 kips
 Est. Length: 50'
 No. Production Piles: 5
 No. Test Piles: 1

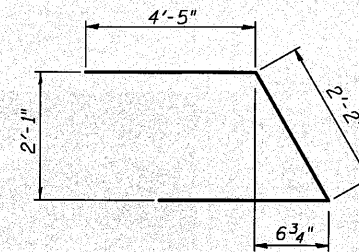


FIELD CUTTING DIAGRAM

Order v2(E) full length. Cut as shown and use remainder of bars in opposite face.



BARS s3(E) & s4(E)



BAR u3(E)

BILL OF MATERIAL

Bar	No.	Size	Length	Shape
n(E)	88	#6	13'-2"	
p(E)	32	#7	22'-2"	
s3(E)	40	#4	16'-9"	□
s4(E)	4	#4	16'-11"	□
u3(E)	12	#6	11'-0"	△
v1(E)	88	#5	4'-4"	
v2(E)	20	#5	16'-6"	
			Cu. Yd.	99
Porous Granular Embankment, Special				
Structure Excavation			Cu. Yd.	129
Concrete Structures			Cu. Yd.	32.5
Concrete Encasement			Cu. Yd.	3.3
Reinforcement Bars, Epoxy Coated			Pound	4500
Bar Splicers			Each	16
Furnishing Steel Piles HP14x73			Foot	250
Driving Piles			Foot	250
Test Pile Steel HP14x73			Each	1
Pile Shoes			Each	6

For details of Bar Splicers, see sheet 27 of 29. For details of piles and Concrete Encasement, see sheet 26 of 29.

11/22/2018 10:07:21 AM G:\ENVO\05-6798-144_02_Bridges_Planes_2\1122\CAD\Structures\511\3370176_64026_021_Sheet.dgn



DESIGNED - GPM	REVISED -
CHECKED - BJM	REVISED -
DRAWN - GPM/MWS	REVISED -
CHECKED - BJM	REVISED -

STATE OF ILLINOIS
DEPARTMENT OF TRANSPORTATION

SOUTH ABUTMENT
STRUCTURE NO. 037-0176
SHEET NO. 22 OF 29 SHEETS

F.A.P. RTE.	SECTION	COUNTY	TOTAL SHEETS	SHEET NO.
638	1298R-4	HENRY	93	43
				CONTRACT NO. 64D25
ILLINOIS FED. AID PROJECT				