

**STANDARD BAR SPLICER ASSEMBLY**

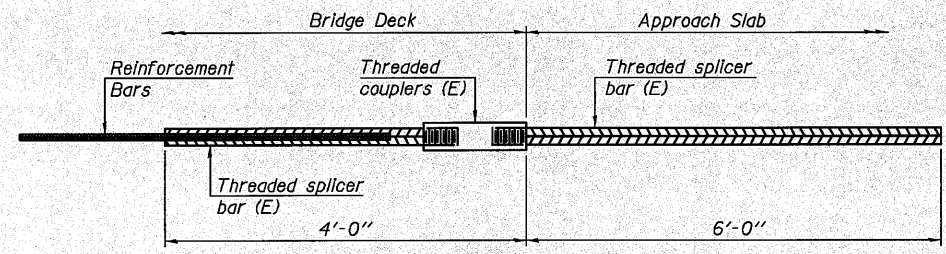
Minimum Lap Lengths					
Bar size to be spliced	Table 1	Table 2	Table 3	Table 4	Table 5
3, 4	1'-5"	1'-11"	2'-1"	2'-4"	2'-3"
5	1'-9"	2'-5"	2'-7"	2'-11"	2'-10"
6	2'-1"	2'-11"	3'-1"	3'-6"	3'-4"
7	2'-9"	3'-10"	4'-2"	4'-8"	4'-6"
8	3'-8"	5'-1"	5'-5"	6'-2"	5'-10"
9	4'-7"	6'-5"	6'-10"	7'-9"	7'-5"

- Table 1: Black bar, 0.8 Class C
- Table 2: Black bar, Top bar lap, 0.8 Class C
- Table 3: Epoxy bar, 0.8 Class C
- Table 4: Epoxy bar, Top bar lap, 0.8 Class C
- Table 5: Epoxy bar, Top bar lap, Class B

Threaded splicer bar length = min. lap length + 1/2" + thread length

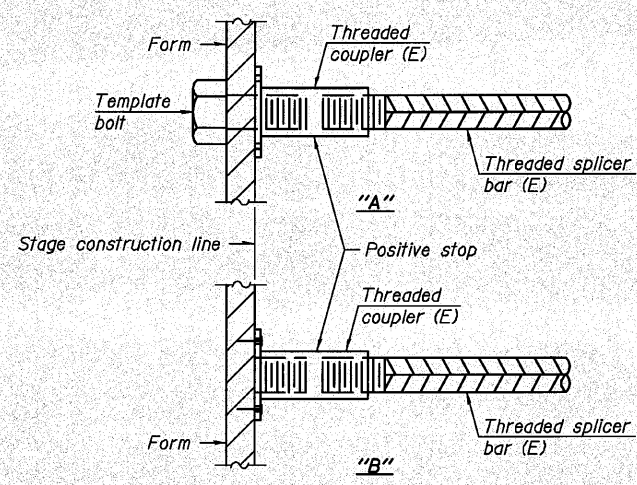
\* Epoxy not required on Bar Splicer Assembly components used in conjunction with black bars.

Location	Bar size	No. assemblies required	Table for minimum lap length
Deck-Top Mat	#5	394	3
Deck-Bottom Mat	#5	263	3
Deck-Skewed Bars	#5	4	3
Appr.-Top Mat	#4	50	3
Appr.-Bottom Mat	#5	92	3
Appr.-Footing	#5	80	3
N. Abutment	#7	16	4
S. Abutment	#7	16	4
Diaphragm-Abut.	#6	16	4
Diaphragm-Pier	#4	8	4
Diaphragm-Pier	#6	4	4
Pier 1 - Cap	#7	10	4
Pier 1 - Wall	#5	36	4
Pier 2 - Cap	#7	10	4
Pier 2 - Wall	#5	36	4



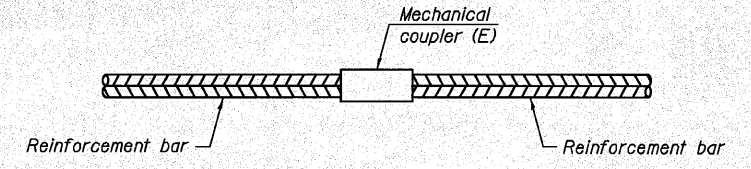
**BAR SPLICER ASSEMBLY FOR #5 BAR ON INTEGRAL OR SEMI-INTEGRAL ABUTMENTS**

No. required = 92



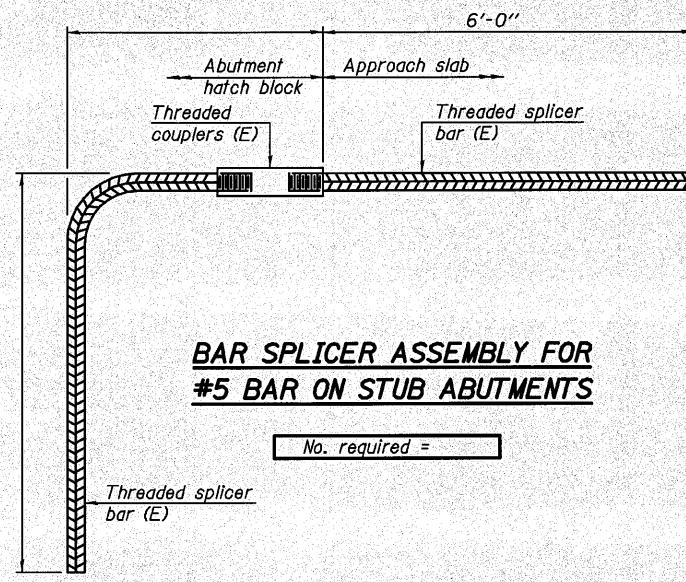
**INSTALLATION AND SETTING METHODS**

- "A" : Set bar splicer assembly by means of a template bolt.
- "B" : Set bar splicer assembly by nailing to wood forms or cementing to steel forms.
- (E) : Indicates epoxy coating.



**STANDARD MECHANICAL SPLICER**

Location	Bar size	No. assemblies required



**BAR SPLICER ASSEMBLY FOR #5 BAR ON STUB ABUTMENTS**

No. required =

**NOTES**

- Splicer bars shall be deformed with threaded ends and have a minimum 60 ksi yield strength.
- All reinforcement shall be lapped and tied to the splicer bars.
- Bar splicer assemblies shall be epoxy coated according to the requirements for reinforcement bars. See Section 508 of the Standard Specifications.
- See special provision for Mechanical Splicers.
- See approved list of bar splicer assemblies and mechanical splicers for alternatives.

1/22/2010 10:07:34 AM C:\BIDS\06-5796-144 D2 Bridges Phase 2\ILLINOIS\CD\Structures\Sh\A\0370176\_64D25\_026\_Bar-Splicer.dgn

BSD-1

7-1-10



DESIGNED - JNH	REVISD -
CHECKED - BJM	REVISD -
DRAWN - MWS	REVISD -
CHECKED - BJM	REVISD -

DESIGNED - JNH	REVISD -
CHECKED - BJM	REVISD -
DRAWN - MWS	REVISD -
CHECKED - BJM	REVISD -

STATE OF ILLINOIS  
DEPARTMENT OF TRANSPORTATION

BAR SPLICER ASSEMBLY AND MECHANICAL SPLICER DETAILS  
STRUCTURE NO. 037-0176  
SHEET NO. 27 OF 29 SHEETS

F.A.P. RTE.	SECTION	COUNTY	TOTAL SHEETS	SHEET NO.
638	129BR-4	HENRY	93	48
CONTRACT NO. 64D25				
ILLINOIS FED. AID PROJECT				