

BENCHMARK: CHISELED SQUARE ON THE NE WINGWALL OF EXISTING BRIDGE S.N. 037-0071, 415 FT. SOUTH OF CULVERT. ELEV. 597.22

S.N. 037-1085 WAS BUILT IN 1931 AS SBI 82 SECTION 129 AT STA. 1258+00. ORIGINAL STRUCTURE IS A SINGLE 6'x6' CONCRETE BOX CULVERT. THE STRUCTURE IS 55'-2" OUT TO OUT AND IS SKEWED 30° LEFT AHEAD. TRAFFIC TO BE MAINTAINED UTILIZING STAGE CONSTRUCTION.

SALVAGE: NONE.

GENERAL NOTES

REINFORCEMENT BARS SHALL CONFORM TO THE REQUIREMENTS OF ASTM A 706 GR 60. SEE SPECIAL PROVISIONS.

FOR BACKFILLING AND EMBANKMENT, SEE STANDARD SPECIFICATIONS.

PRECAST ALTERNATIVE IS NOT ALLOWED.

CAST IN PLACE CONCRETE EXPOSED EDGES SHALL BE BEVELED 3/4".

PLAN DIMENSIONS AND DETAILS RELATIVE TO EXISTING PLANS ARE SUBJECT TO NOMINAL CONSTRUCTION VARIATIONS. THE CONTRACTOR SHALL FIELD VERIFY EXISTING DIMENSIONS AND DETAILS AFFECTING NEW CONSTRUCTION AND MAKE NECESSARY APPROVED ADJUSTMENTS PRIOR TO CONSTRUCTION OR ORDERING OF MATERIALS. SUCH VARIATIONS SHALL NOT BE CAUSE FOR ADDITIONAL COMPENSATION FOR A CHANGE IN SCOPE OF THE WORK, HOWEVER, THE CONTRACTOR WILL BE PAID FOR THE QUANTITY ACTUALLY FURNISHED AT THE UNIT PRICE BID FOR THE WORK.

LAYOUT OF THE SLOPE PROTECTION SYSTEM MAY BE VARIED TO SUIT GROUND CONDITIONS IN THE FIELD AS DIRECTED BY THE ENGINEER.

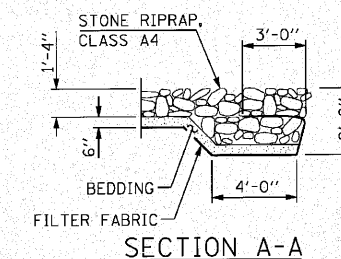
DESIGN SPECIFICATIONS

2002 AASHTO STANDARD SPECIFICATIONS FOR HIGHWAY STRUCTURES

LOADING HS20-44

DESIGN STRESSES

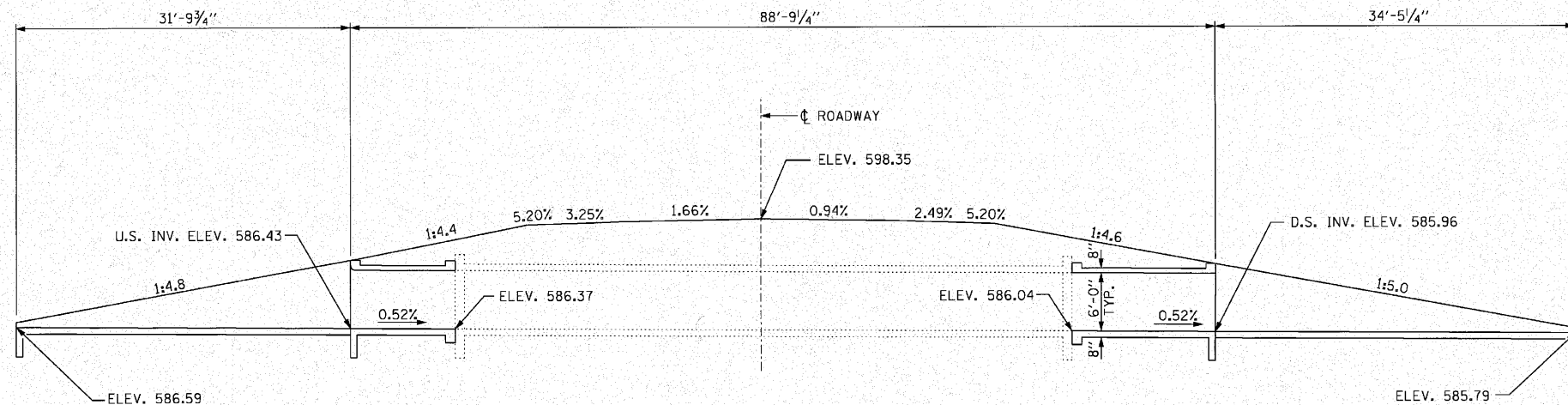
FIELD UNITS
 $f'_c = 3,500$ PSI
 $f_y = 60,000$ PSI (REINFORCEMENT)



TOTAL BILL OF MATERIAL

ITEM	UNIT	QTY.
CONCRETE BOX CULVERTS	CU. YD.	47.6
EXPANSION BOLTS, 3/4 INCH x 18 INCH	EA.	40
REINFORCEMENT BARS	POUND	6470
STONE RIPRAP, CLASS A4	SO. YD.	38
FILTER FABRIC	SO. YD.	38
NAME PLATES	EA.	1

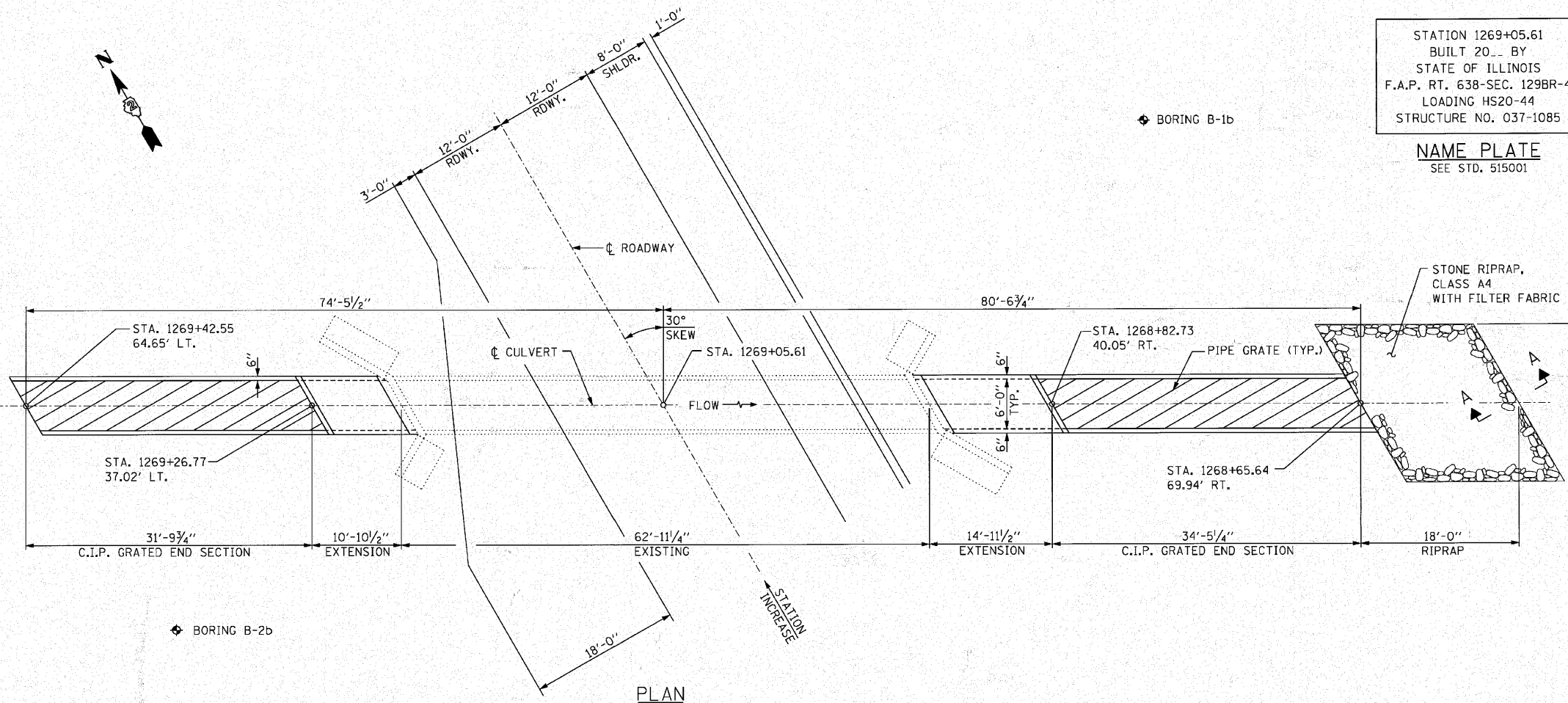
GENERAL PLAN & ELEVATION
 ILLINOIS ROUTE 82 OVER DRAINAGE DITCH
 F.A.P. RTE. 638 - SEC. 129BR-4
 HENRY COUNTY
 STATION 1269+05.61
 STRUCTURE NO. 037-1085



LONGITUDINAL SECTION
 (LOOKING NORTH)

STATION 1269+05.61
 BUILT 20... BY
 STATE OF ILLINOIS
 F.A.P. RT. 638-SEC. 129BR-4
 LOADING HS20-44
 STRUCTURE NO. 037-1085

NAME PLATE
 SEE STD. 515001



PLAN

FILE NAME = 07FILES

LI LIN ENGINEERING, LTD.
 Consulting Engineers
 Chatham, Illinois

USER NAME = #USER#	DESIGNED - TBP	REVISED -
DRAWN - TBP	CHECKED - ADB	REVISED -
PLOT SCALE = #SCALE#	DATE - 07/16/2010	REVISED -
PLOT DATE = #DATE#		

STATE OF ILLINOIS
 DEPARTMENT OF TRANSPORTATION

GENERAL PLAN & ELEVATION
 STRUCTURE NO. 037-1085

SCALE: SHEET NO. 1 OF 5 SHEETS STA. TO STA.

F.A.P. RTE.	SECTION	COUNTY	TOTAL SHEETS	SHEET NO.
638	129BR-4	HENRY	93	51
CONTRACT NO. 64D25				
ILLINOIS FED. AID PROJECT				