

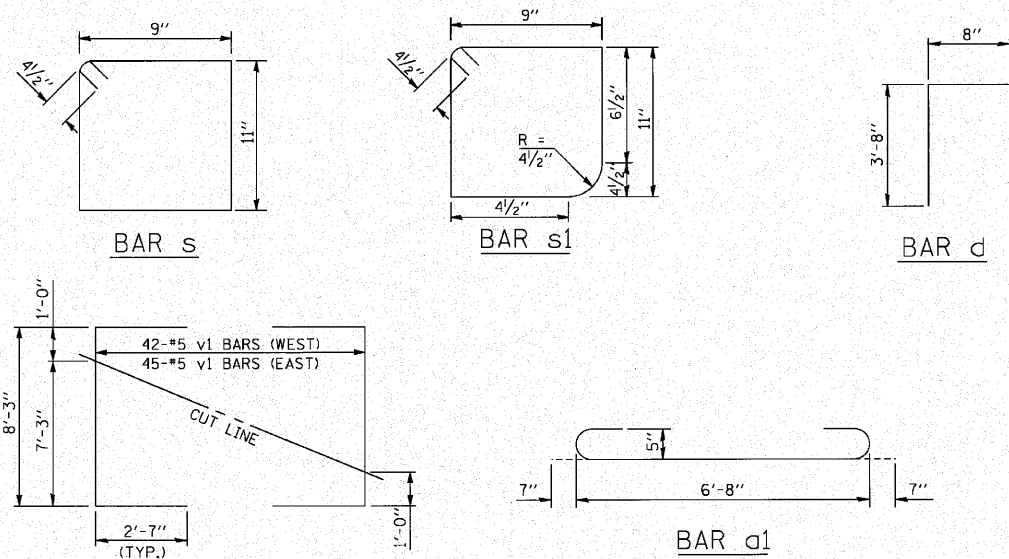
HALF LONG SECTION

HALF ELEVATION

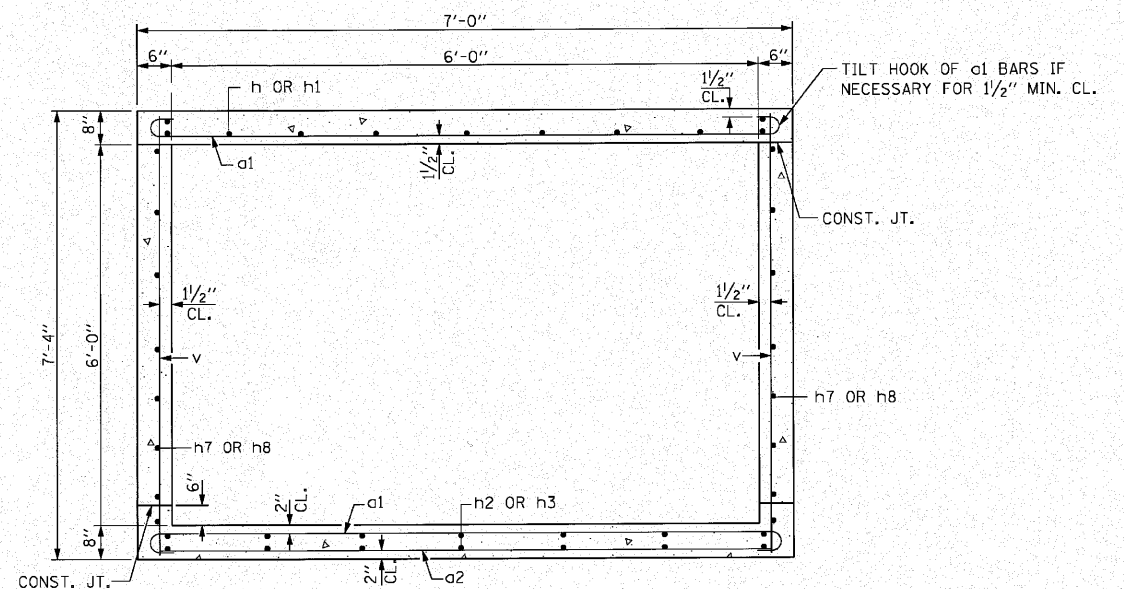
(DIMENSIONS ALONG WALL)

BILL OF MATERIAL

BAR	NO.	SIZE	LENGTH	SHAPE
a1	224	#5	7'-10"	
a2	54	#4	6'-8"	
d	28	#4	4'-4"	
h	9	#5	10'-6"	
h1	9	#5	14'-7"	
h2	14	#4	12'-1"	
h3	14	#4	16'-1"	
h4	24	#6	7'-9"	
h5	14	#4	31'-5"	
h6	14	#4	34'-1"	
h7	12	#5	12'-5"	
h8	12	#5	16'-5"	
h9	6	#6	31'-5"	
h10	6	#6	34'-1"	
h11	2	#6	32'-2"	
h12	2	#6	34'-8"	
s	40	#4	4'-1"	
s1	8	#4	4'-1"	
v	70	#4	7'-0"	
v1	87	#5	13'-5"	
REINFORCEMENT BARS				POUND. 6470
CONCRETE BOX CULVERTS				CU. YD. 47.6



FIELD CUTTING DIAGRAM



SECTION THRU BARREL

STATE OF ILLINOIS  
DEPARTMENT OF TRANSPORTATION

CULVERT DETAILS-2  
STRUCTURE NO. 037-1085

F.A.P. RTE.	SECTION	COUNTY	TOTAL SHEETS	SHEET NO.
638	129BR-4	HENRY	93	53
CONTRACT NO. 64D25				
ILLINOIS FED. AID PROJECT				

SCALE: SHEET NO. 3 OF 5 SHEETS STA. TO STA.

FILE NAME = \$FILE\$.S

**LI ENGINEERING, LTD.**  
Consulting Engineers  
Chatham, Illinois

USER NAME = \$USER\$	DESIGNED - TBP	REVISED -
PLOT SCALE = \$SCALE\$	DRAWN - TBP	REVISED -
PLOT DATE = \$DATE\$	CHECKED - ADB	REVISED -
	DATE - 07/16/2010	REVISED -